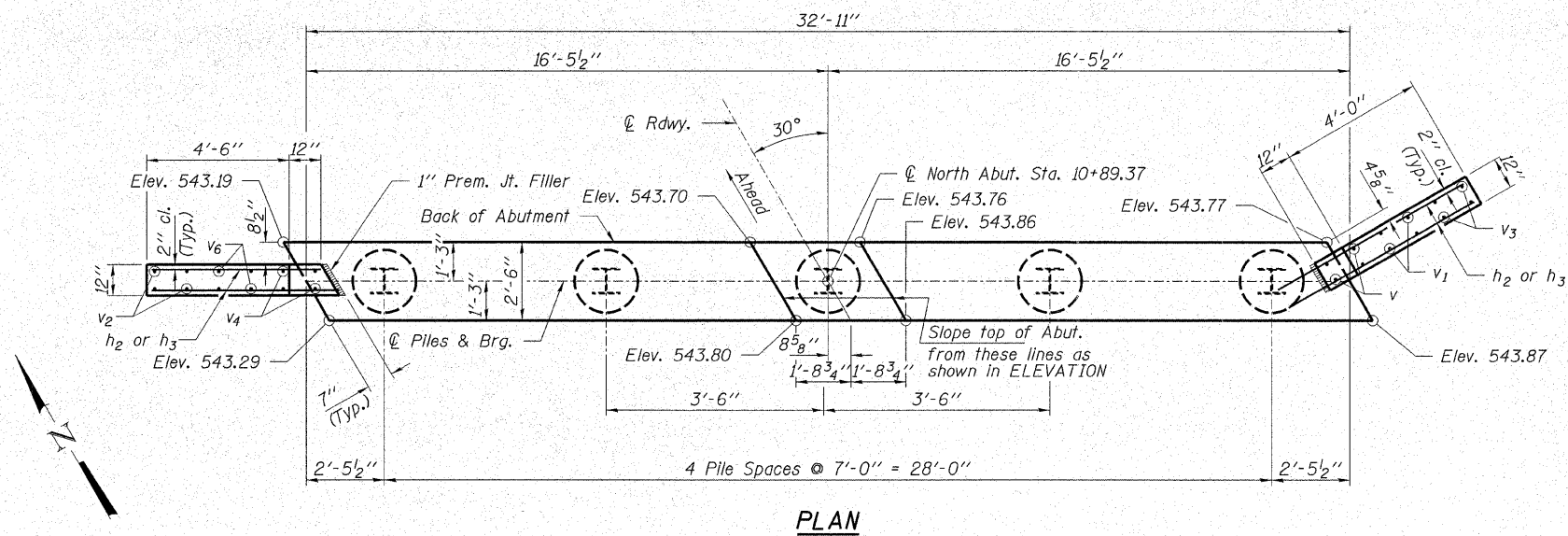
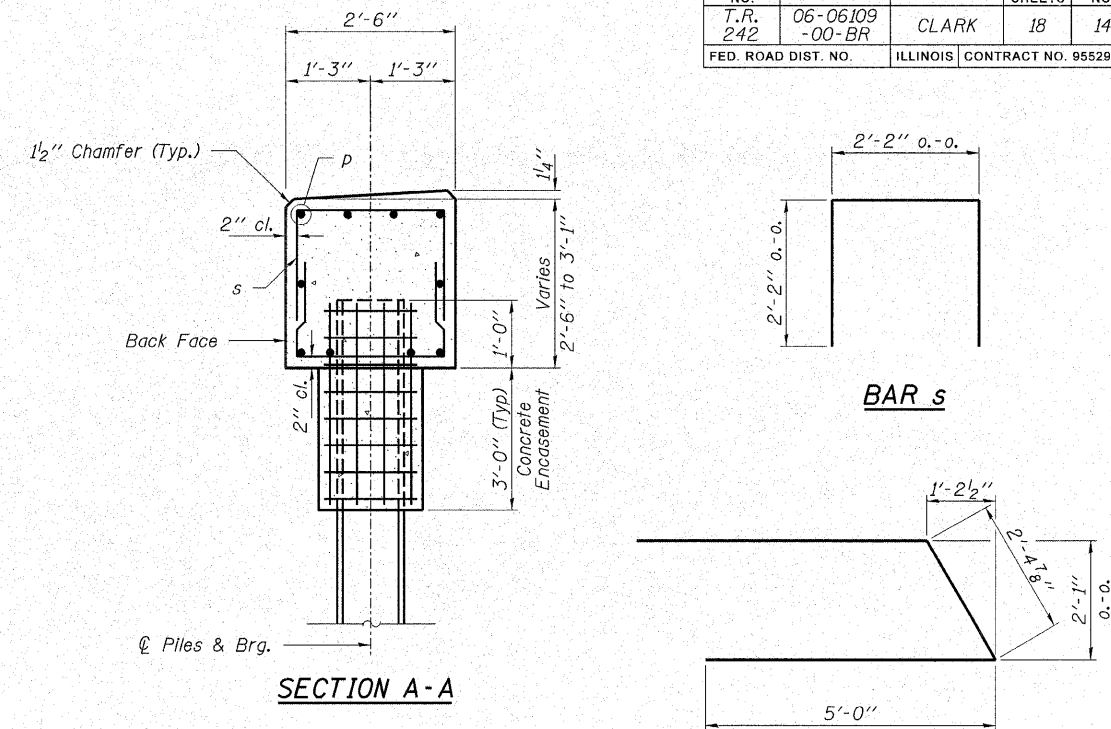


ROUTE NO.	SECTION	COUNTY	TOTAL SHEETS	SHEET NO.
T.R. 242	06-06109-00-BR	CLARK	18	14
FED. ROAD DIST. NO.		ILLINOIS CONTRACT NO. 95529		



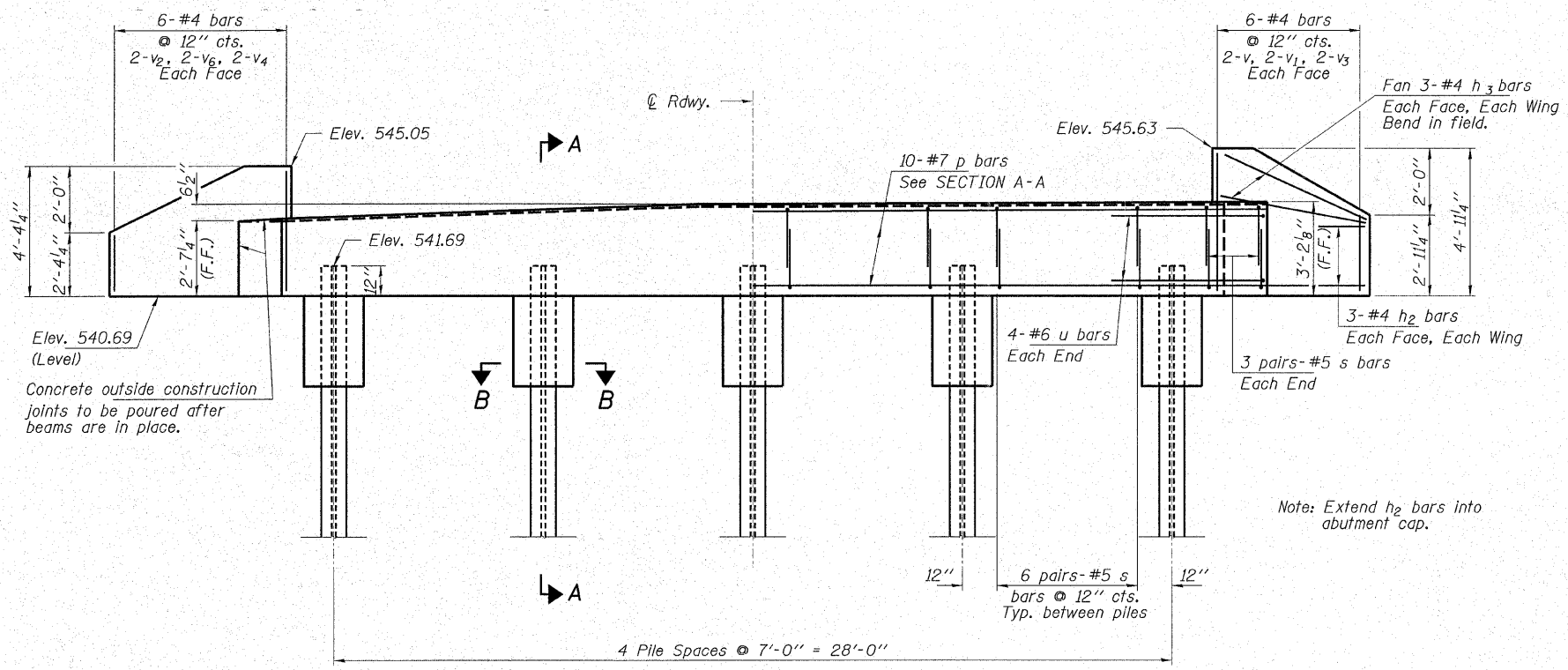
**PLAN**



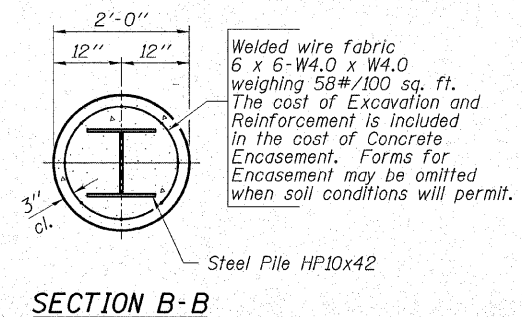
**SECTION A-A**

**BAR s**

**BAR u**



**ELEVATION**  
(Looking North)



**SECTION B-B**

**BILL OF MATERIAL - N. ABUT.**

BAR	NO.	SIZE	LENGTH	SHAPE
h <sub>2</sub>	12	#4	6'-9"	—
h <sub>3</sub>	12	#4	5'-0"	—
p	10	#7	32'-7"	—
s	60	#5	6'-6"	U
u	8	#6	12'-5"	U
v	4	#4	4'-6"	—
v <sub>1</sub>	4	#4	3'-6"	—
v <sub>2</sub>	4	#4	2'-0"	—
v <sub>3</sub>	4	#4	2'-6"	—
v <sub>4</sub>	4	#4	4'-0"	—
v <sub>6</sub>	4	#4	3'-0"	—
Concrete Structures			Cu. Yd.	10.5
Concrete Encasement			Cu. Yd.	1.7
Reinforcement Bars			Pound	1,370
Steel Piles HP10x42			Foot	75

**PILE DATA**

Type..... Steel HP10x42  
 No. Req'd..... 5  
 Allowable Resistance Available..... 112 Kips/Pile  
 Nominal Req'd Bearing..... 336 Kips/Pile  
 Est. Length..... 15 Ft/Pile

Notes: The Steel H-Piles shall be according to AASHTO M270 Grade 50.

See Sheet 17 for pile details.

**HAMPTON, LENZINI & RENWICK, INC.**  
 CIVIL & STRUCTURAL ENGINEERS  
 LAND SURVEYORS

3085 STEVENSON DRIVE, SUITE 201  
 SPRINGFIELD, ILLINOIS 62703  
 (217) 546-3400

**ELGIN • SPRINGFIELD**

PROJECT NUMBER: 12-23-0026-1    DATE: 10/30/07  
 DESIGNED: R.J.P.    CHECKED: S.W.M.    DRAWN: D.T.M.

**NORTH ABUTMENT**  
**SECTION 06-06109-00-BR**  
**DOUGLAS ROAD DISTRICT**  
**CLARK COUNTY**  
**STRUCTURE NO. 012-3329 / STATION 10+00**