

FAS ROUTE	IDOT SECTION	COUNTY
1857	04-00071-00-BR	MONROE
FEDERAL AID PROJECT		ILLINOIS
IDOT JOB NO. BR-RS-1857(121)		
IDOT CONTRACT NO. 97323		

THOUVENOT, WADE & MOERCHEN, INC.
ENGINEERS ♦ SURVEYORS ♦ PLANNERS



CORPORATE OFFICE
4940 OLD COLLINSVILLE RD.
SWANSEA, ILLINOIS 62226
TEL (618) 624-4488
FAX (618) 624-6688
corp@twm-inc.com

EDWARDSVILLE OFFICE
1015B CENTURY DRIVE
EDWARDSVILLE, ILLINOIS 62025
TEL (618) 656-4040
FAX (618) 656-4343
edwardsville@twm-inc.com

ST. LOUIS OFFICE
1001 CRAIG ROAD, SUITE 260
ST. LOUIS, MISSOURI 63146
TEL (314) 236-5052
FAX (314) 872-2194
stlouis@twm-inc.com

WATERLOO OFFICE
113 SOUTH MAIN STREET
WATERLOO, ILLINOIS 62298
TEL (618) 939-5050
FAX (618) 939-3938
waterloo@twm-inc.com

PROFESSIONAL REGISTRATIONS	LICENSE NO.
ILLINOIS PROFESSIONAL DESIGN FIRM	184-00120
PROFESSIONAL ENGINEERING CORP.	62-03570
PROFESSIONAL STRUCTURAL ENGR. CORP.	81-005202
ILLINOIS PROF. LAND SURVEYING CORP.	048-00029
MISSOURI PROFESSIONAL ENGR. CORP.	NC 001528
MISSOURI LAND SURVEYING CORP.	NC 000346

SEAL

FINAL

Signatures: _____
Signature Date: _____
Expiration Date: _____

STATEMENT OF RESPONSIBILITY
I hereby confirm that the document herein to be authenticated by my seal is restricted to this sheet, and I hereby disclaim any responsibility for all other drawings, specifications, estimates, reports or other documents or instruments relating to or intended to be utilized for any other part of the architectural, engineering or survey project.

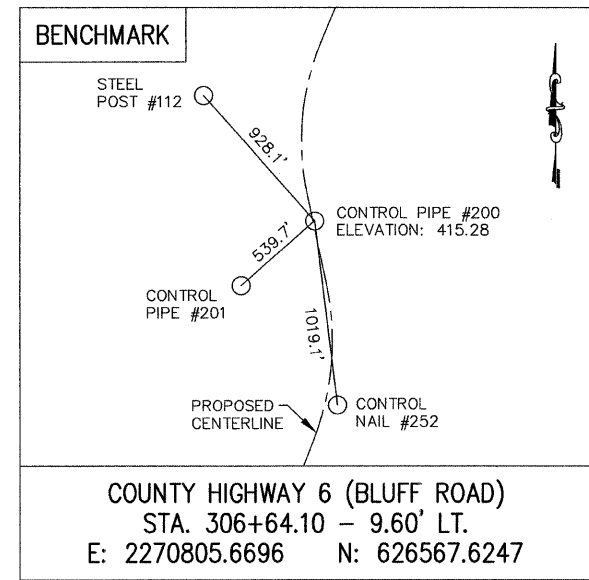
REFERENCE TIES AND BENCHMARKS

BLUFF ROAD (CTY. HWY. 6)
BRIDGE REPLACEMENT
OVER FOUNTAIN CREEK
MONROE COUNTY, IL

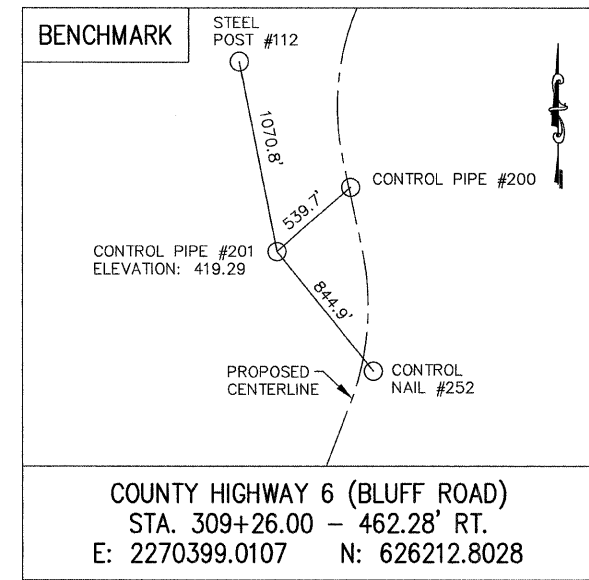
REV.	DATE	DESCRIPTION
△		
△		
△		

DRAWN BY: KBF/JWS	SHEET 13
DESIGNED BY: BJC	OF 67 SHEETS
CHECKED BY: SJK	
APPROVED BY: SJK	PROJECT DESCRIPTION
PROJECT NUMBER: 116-040125	BLUFF RD. BRIDGE OVER FOUNTAIN CRK.

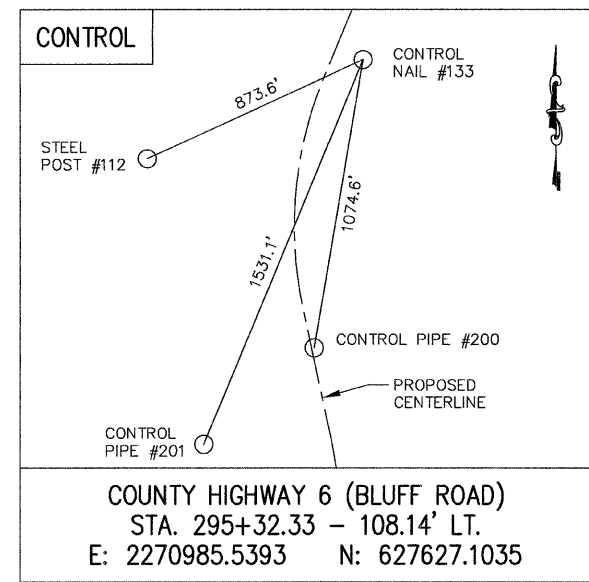
ISSUED FOR REVIEW ISSUED FOR BIDDING
 ISSUED FOR CONSTR. RECORD DRAWING



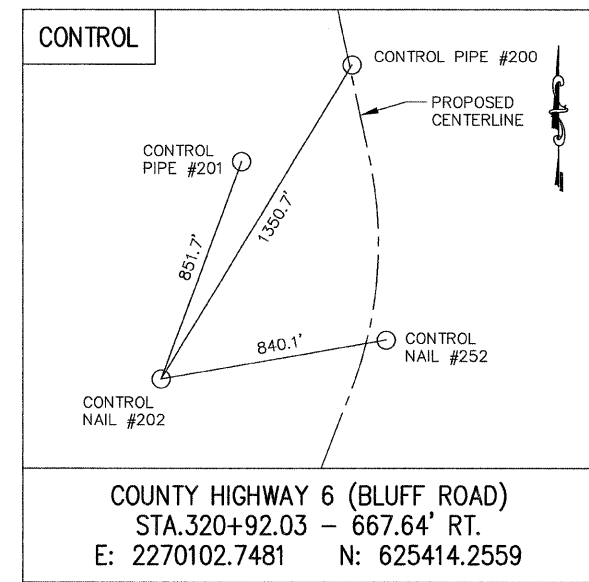
COUNTY HIGHWAY 6 (BLUFF ROAD)
STA. 306+64.10 - 9.60' LT.
E: 2270805.6696 N: 626567.6247



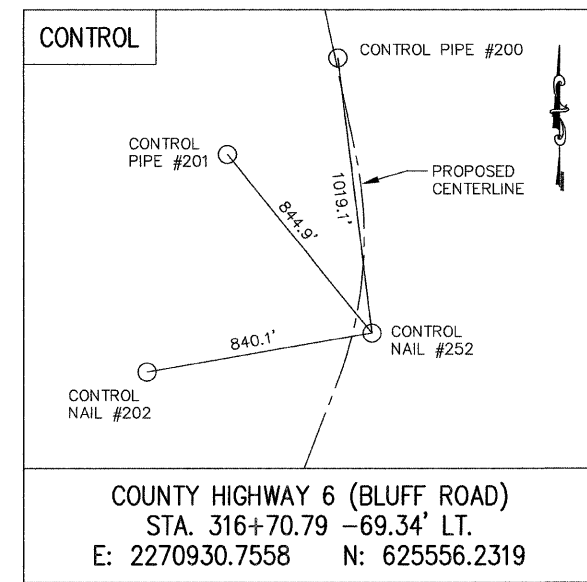
COUNTY HIGHWAY 6 (BLUFF ROAD)
STA. 309+26.00 - 462.28' RT.
E: 2270399.0107 N: 626212.8028



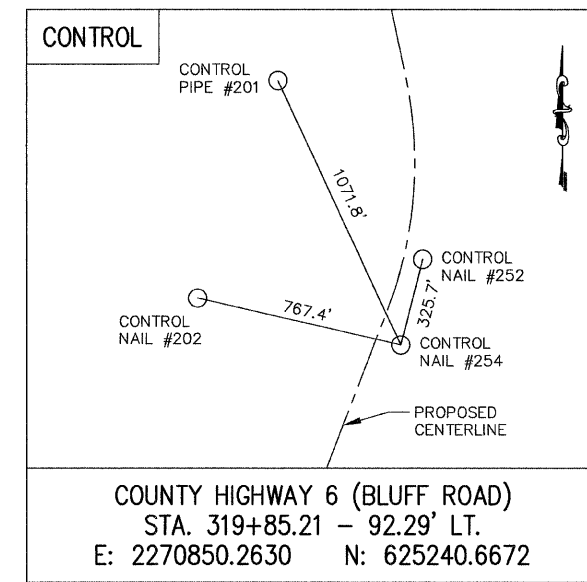
COUNTY HIGHWAY 6 (BLUFF ROAD)
STA. 295+32.33 - 108.14' LT.
E: 2270985.5393 N: 627627.1035



COUNTY HIGHWAY 6 (BLUFF ROAD)
STA. 320+92.03 - 667.64' RT.
E: 2270102.7481 N: 625414.2559



COUNTY HIGHWAY 6 (BLUFF ROAD)
STA. 316+70.79 - 69.34' LT.
E: 2270930.7558 N: 625556.2319



COUNTY HIGHWAY 6 (BLUFF ROAD)
STA. 319+85.21 - 92.29' LT.
E: 2270850.2630 N: 625240.6672

P:\040125\Roadway Plans\DWG\CD\COVER, NOTES, SCHEDULES, TYPICALS, & DETAIL.S.dwg 10/11/2007 12:53:28 PM CDT