

FAS ROUTE	IDOT SECTION	COUNTY
1857	04-00071-00-BR	MONROE
FEDERAL AID PROJECT	ILLINOIS	
IDOT JOB NO.	BR-RS-1857(121)	
IDOT CONTRACT NO.	97323	

THOUVENOT, WADE & MOERCHEN, INC.
ENGINEERS • SURVEYORS • PLANNERS



CORPORATE OFFICE
4940 OLD COLLINSVILLE RD.
SWANSEA, ILLINOIS 62226
TEL (618) 624-4488
FAX (618) 624-6688
corp@twm-inc.com

EDWARDSVILLE OFFICE
1015B CENTURY DRIVE
EDWARDSVILLE, ILLINOIS 62025
TEL (618) 656-4040
FAX (618) 656-4343
edwardsville@twm-inc.com

ST. LOUIS OFFICE
1001 CRAIG ROAD, SUITE 260
ST. LOUIS, MISSOURI 63146
TEL (314) 236-5052
FAX (314) 872-2194
stlouis@twm-inc.com

WATERLOO OFFICE
113 SOUTH MAIN STREET
WATERLOO, ILLINOIS 62298
TEL (618) 939-5050
FAX (618) 939-3938
waterloo@twm-inc.com

PROFESSIONAL REGISTRATIONS	LICENSE NO.
ILLINOIS PROFESSIONAL DESIGN FIRM	184-001200
PROFESSIONAL ENGINEERING CORP.	62-03570
PROFESSIONAL STRUCTURAL ENGR. CORP.	81-005202
ILLINOIS PROF. LAND SURVEYING CORP.	048-000029
MISSOURI PROFESSIONAL ENGR. CORP.	NC 001528
MISSOURI LAND SURVEYING CORP.	NC 000346

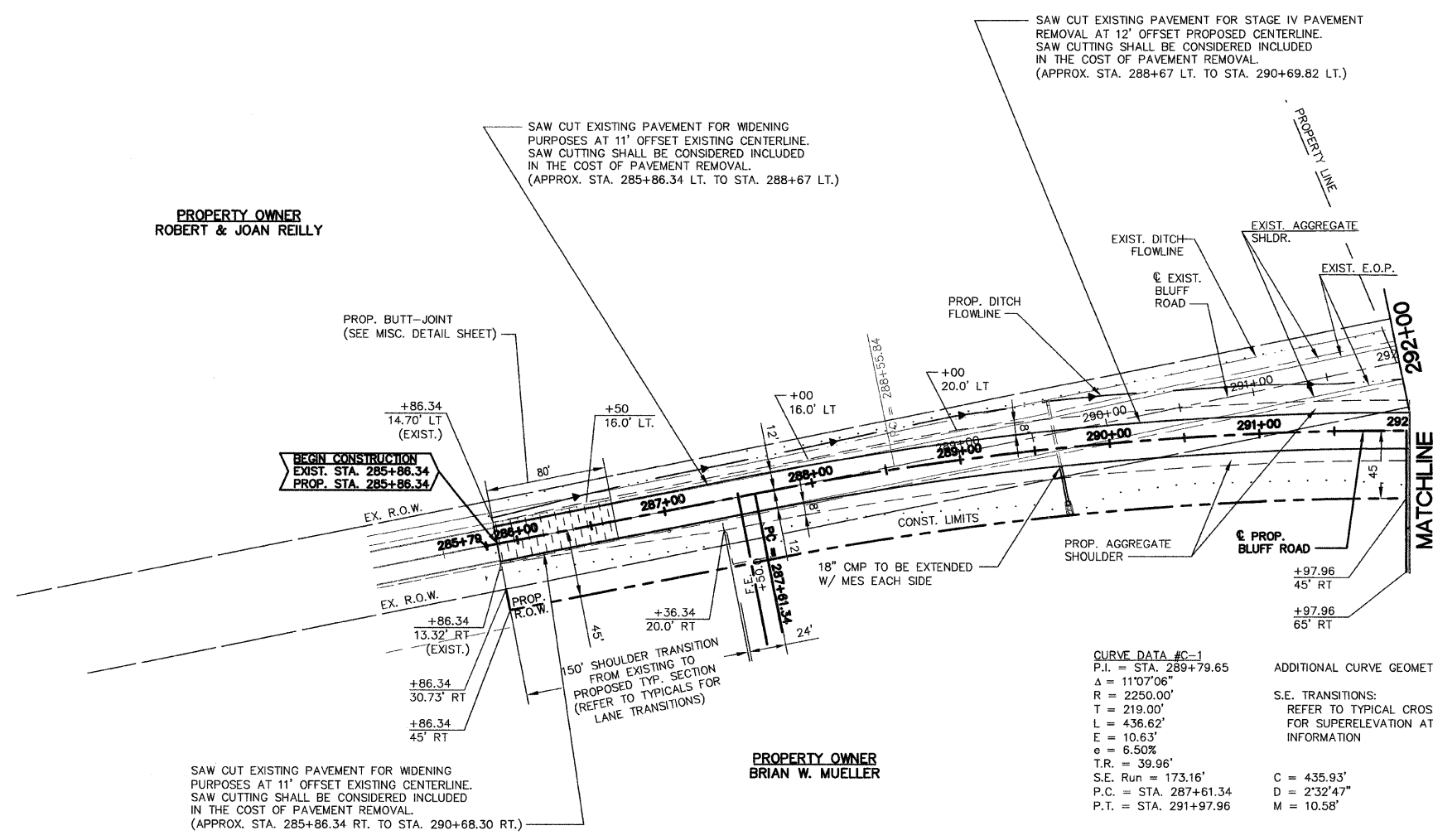
SEAL

FINAL

Signature: _____ Date: _____
Expiration Date: _____
STATEMENT OF RESPONSIBILITY
I hereby confirm that the document herein to be authenticated by my seal is restricted to this sheet, and I hereby disclaim any responsibility for all other drawings, specifications, estimates, reports or other documents or instruments relating to or intended to be utilized for any other part of the architectural, engineering or survey project.

PROPERTY OWNER
ROBERT & JOAN REILLY

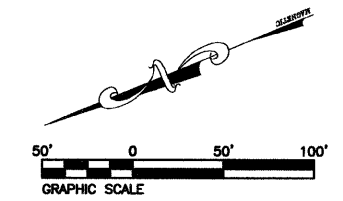
PROPERTY OWNER
BRIAN W. MUELLER



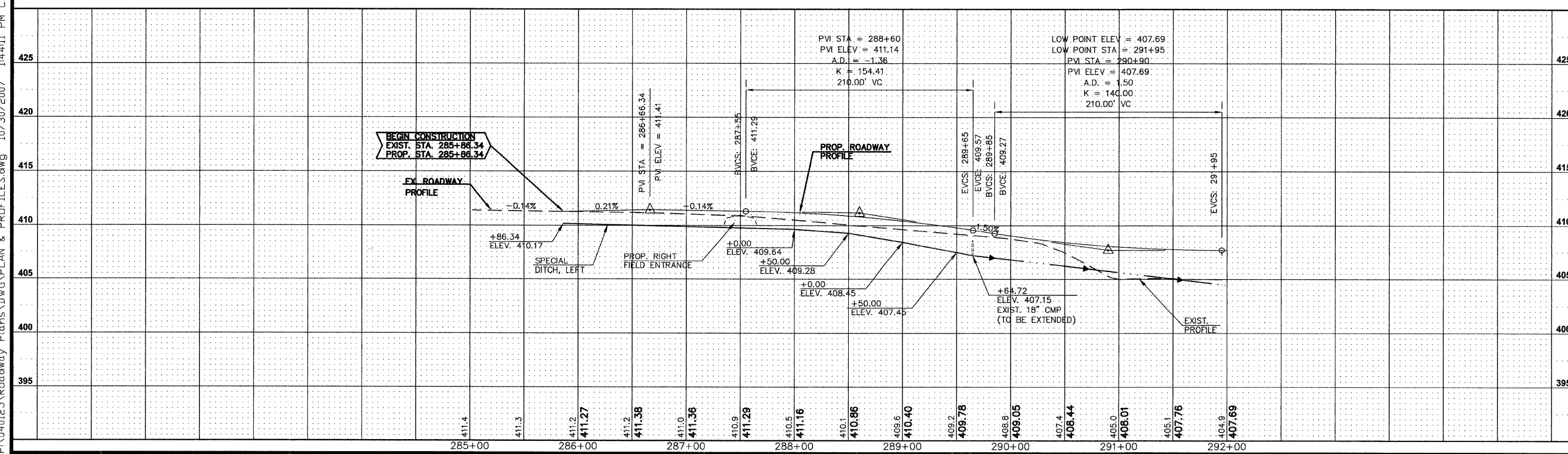
CURVE DATA #C-1
P.I. = STA. 289+79.65
 $\Delta = 11'07.06''$
R = 2250.00'
T = 219.00'
L = 436.62'
E = 10.63'
e = 6.50%
T.R. = 39.96'
S.E. Run = 173.16'
P.C. = STA. 287+61.34
P.T. = STA. 291+97.96

ADDITIONAL CURVE GEOMETRICS:
C = 435.93'
D = 2'32.47"
M = 10.58'

S.E. TRANSITIONS:
REFER TO TYPICAL CROSS SECTIONS FOR SUPERELEVATION ATTAINMENT INFORMATION



P:\040125\Roadway Plans\DWG\PLAN & PROFILES.dwg 10/30/2007 1:44:11 PM CDT



PLAN AND PROFILE
STA. 285+86.34 TO STA. 292+00
BLUFF ROAD (CTY. HWY. 6)

PROJECT:
BLUFF ROAD (CTY. HWY. 6)
BRIDGE REPLACEMENT
OVER FOUNTAIN CREEK
MONROE COUNTY, IL

REV.	DATE	DESCRIPTION
△		
△		
△		

DRAWN BY: KBF/JWS	SHEET
DESIGNED BY: BJC	14
CHECKED BY: SJK	OF 67 SHEETS
APPROVED BY: SJK	PROJECT DESCRIPTION
	BLUFF RD. BRIDGE
	PROJECT NUMBER: T16-040125
	OVER FOUNTAIN CRK.
<input type="checkbox"/> ISSUED FOR REVIEW	<input type="checkbox"/> ISSUED FOR BIDDING
<input checked="" type="checkbox"/> ISSUED FOR CONSTR.	<input type="checkbox"/> RECORD DRAWING