

FIS ROUTE	IDOT SECTION	COUNTY
1857	04-00071-00-BR	MONROE
FEDERAL AID PROJECT	ILLINOIS	
IDOT JOB NO.	BR-RS-1857(121)	
IDOT CONTRACT NO.	97323	

THOUVENOT, WADE & MOERCHEN, INC.
ENGINEERS ♦ SURVEYORS ♦ PLANNERS



CORPORATE OFFICE
4940 OLD COLLINSVILLE RD.
SWANSEA, ILLINOIS 62226
TEL (618) 624-4488
FAX (618) 624-6688
corp@twm-inc.com

EDWARDSVILLE OFFICE
1015B CENTURY DRIVE
EDWARDSVILLE, ILLINOIS 62025
TEL (618) 656-4040
FAX (618) 656-4343
edwardsville@twm-inc.com

ST. LOUIS OFFICE
1001 CRAIG ROAD, SUITE 260
ST. LOUIS, MISSOURI 63146
TEL (314) 236-5052
FAX (314) 872-2194
stlouis@twm-inc.com

WATERLOO OFFICE
113 SOUTH MAIN STREET
WATERLOO, ILLINOIS 62298
TEL (618) 939-5050
FAX (618) 939-3938
waterloo@twm-inc.com

PROFESSIONAL REGISTRATIONS	LICENSE NO.
ILLINOIS PROFESSIONAL DESIGN FIRM	184-00120
PROFESSIONAL ENGINEERING CORP.	62-03570
PROFESSIONAL STRUCTURAL ENGR. CORP.	81-005202
ILLINOIS PROF. LAND SURVEYING CORP.	048-00029
MISSOURI PROFESSIONAL ENGR. CORP.	NC 001528
MISSOURI LAND SURVEYING CORP.	NC 000346

SEAL

FINAL

Signatures:
Signature Date: _____
Expiration Date: _____
STATEMENT OF RESPONSIBILITY
I hereby confirm that the document herein to be authenticated by my seal is restricted to this sheet, and I hereby disclaim any responsibility for all other drawings, specifications, estimates, reports or other documents or instruments relating to or intended to be utilized for any other part of the architectural, engineering or survey project.

PLAN AND PROFILE
STA. 312+00 TO STA. 325+06.21
BLUFF ROAD (CTY. HWY. 6)

PROJECT:
BLUFF ROAD (CTY. HWY. 6)
BRIDGE REPLACEMENT
OVER FOUNTAIN CREEK
MONROE COUNTY, IL

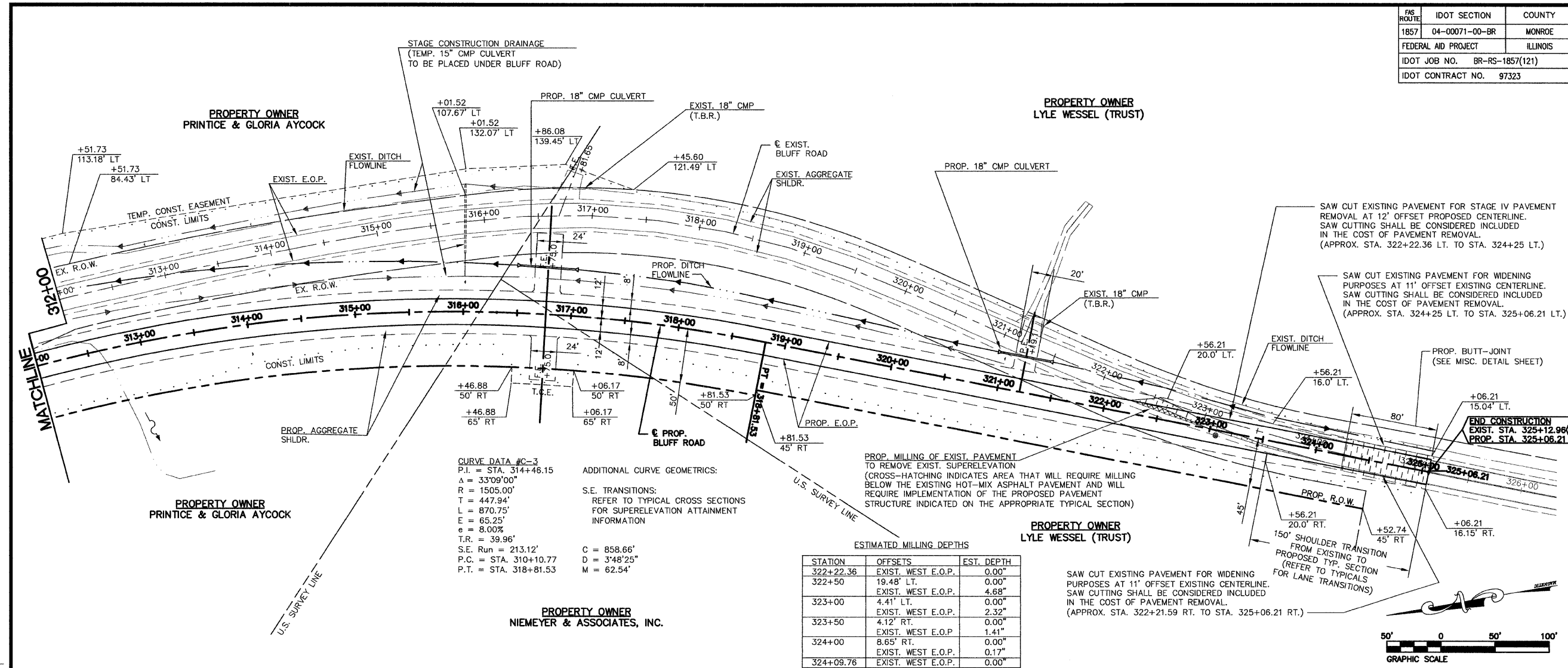
REV.	DATE	DESCRIPTION

DRAWN BY: KBF/JWS
DESIGNED BY: BJG
CHECKED BY: SJK
APPROVED BY: SJK

SHEET **17** OF 67 SHEETS

PROJECT DESCRIPTION: BLUFF RD. BRIDGE OVER FOUNTAIN CRK.
PROJECT NUMBER: 16-040125

ISSUED FOR REVIEW ISSUED FOR BIDDING
 ISSUED FOR CONSTR. RECORD DRAWING



CURVE DATA #C-3
P.I. = STA. 314+46.15
Δ = 33°09'00"
R = 1505.00'
T = 447.94'
L = 870.75'
E = 65.25'
e = 8.00%
T.R. = 39.96'
S.E. Run = 213.12'
P.C. = STA. 310+10.77
P.T. = STA. 318+81.53

ADDITIONAL CURVE GEOMETRICS:
S.E. TRANSITIONS:
REFER TO TYPICAL CROSS SECTIONS FOR SUPERELEVATION ATTAINMENT INFORMATION

C = 858.66'
D = 3'48"25"
M = 62.54'

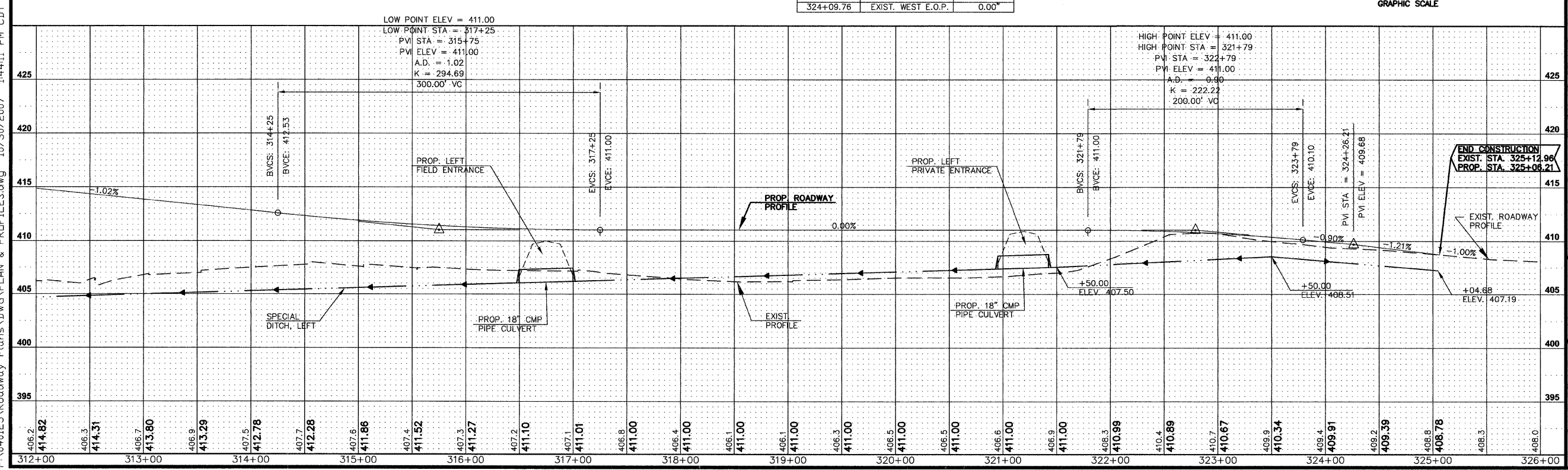
ESTIMATED MILLING DEPTHS

STATION	OFFSETS	EST. DEPTH
322+22.36	EXIST. WEST E.O.P.	0.00"
322+50	19.48' LT.	0.00"
	EXIST. WEST E.O.P.	4.68"
323+00	4.41' LT.	0.00"
	EXIST. WEST E.O.P.	2.32"
323+50	4.12' RT.	0.00"
	EXIST. WEST E.O.P.	1.41"
324+00	8.65' RT.	0.00"
	EXIST. WEST E.O.P.	0.17"
324+09.76	EXIST. WEST E.O.P.	0.00"

SAW CUT EXISTING PAVEMENT FOR WIDENING PURPOSES AT 11' OFFSET EXISTING CENTERLINE. SAW CUTTING SHALL BE CONSIDERED INCLUDED IN THE COST OF PAVEMENT REMOVAL. (APPROX. STA. 322+21.59 RT. TO STA. 325+06.21 RT.)

LOW POINT ELEV = 411.00
LOW POINT STA = 317+25
PVI STA = 315+75
PVI ELEV = 411.00
A.D. = 1.02
K = 294.69
300.00' VC

HIGH POINT ELEV = 411.00
HIGH POINT STA = 321+79
PVI STA = 322+79
PVI ELEV = 411.00
A.D. = 0.90
K = 222.22
200.00' VC



P:\040125\Roadway Plans\DWG\PLAN & PROFILES.dwg 10/30/2007 1:44:11 PM CDT