

FAS ROUTE	IDOT SECTION	COUNTY
1857	04-00071-00-BR	MONROE
FEDERAL AID PROJECT		ILLINOIS
IDOT JOB NO. BR-RS-1857(121)		
IDOT CONTRACT NO. 97323		

THOUVENOT, WADE & MOERCHEN, INC.
ENGINEERS • SURVEYORS • PLANNERS



- CORPORATE OFFICE**
4940 OLD COLLINSVILLE RD.
SWANSEA, ILLINOIS 62226
TEL (618) 624-4488
FAX (618) 624-6688
corp@twm-inc.com
- EDWARDSVILLE OFFICE**
1015B CENTURY DRIVE
EDWARDSVILLE, ILLINOIS 62025
TEL (618) 656-4040
FAX (618) 656-4343
edwardsville@twm-inc.com
- ST. LOUIS OFFICE**
1001 CRAIG ROAD, SUITE 260
ST. LOUIS, MISSOURI 63146
TEL (314) 236-5052
FAX (314) 872-2194
stlouis@twm-inc.com
- WATERLOO OFFICE**
113 SOUTH MAIN STREET
WATERLOO, ILLINOIS 62298
TEL (618) 939-5050
FAX (618) 939-3938
waterloo@twm-inc.com

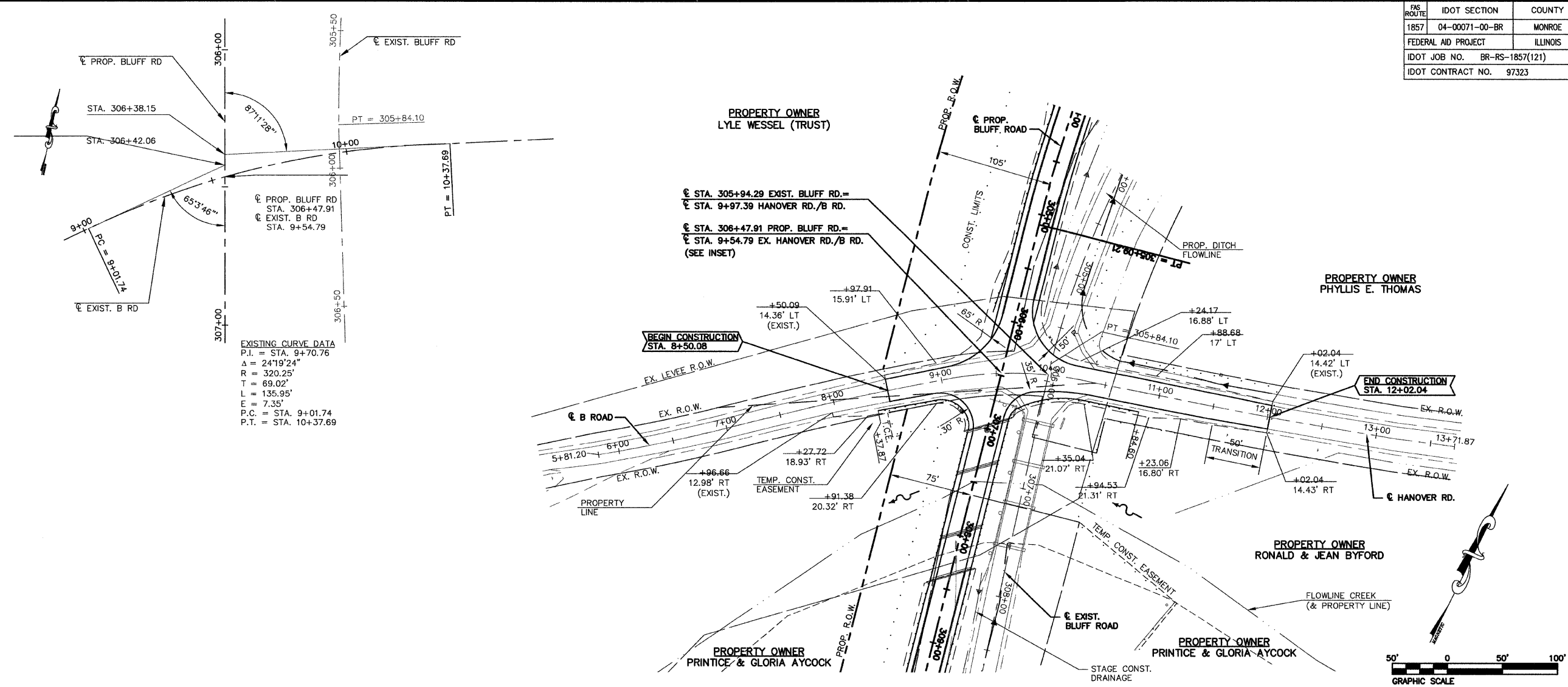
ILLINOIS PROFESSIONAL DESIGN FIRM	184-00120
PROFESSIONAL ENGINEERING CORP.	62-035070
PROFESSIONAL STRUCTURAL ENGR. CORP.	61-050202
ILLINOIS PROF. LAND SURVEYING CORP.	048-000029
MISSOURI PROFESSIONAL ENGR. CORP.	NC 001528
MISSOURI LAND SURVEYING CORP.	NC 000346

SEAL

FINAL

Signatures: _____
Signature Date: _____
Expiration Date: _____

STATEMENT OF RESPONSIBILITY
I hereby confirm that the document herein to be authenticated by my seal is restricted to this sheet, and I hereby disclaim any responsibility for all other drawings, specifications, estimates, reports or other documents or instruments relating to or intended to be utilized for any other part of the architectural, engineering or survey project.



EXISTING CURVE DATA
P.I. = STA. 9+70.76
Δ = 24°19'24"
R = 320.25'
T = 69.02'
L = 135.95'
E = 7.35'
P.C. = STA. 9+01.74
P.T. = STA. 10+37.69

LOW POINT ELEV = 418.16
LOW POINT STA = 10+41.52
PVI STA = 10+63.34
PVI ELEV = 417.62
A.D. = 2.67
K = 65.53
175.00' VC

P:\040125\Roadway Plans\DWG\PLAN & PROFILES.dwg 10/12/2007 7:05:44 AM CDT

TITLE
PLAN AND PROFILE
STA. 8+50.08 TO STA. 12+02.04
HANOVER ROAD AND 'B' ROAD

PROJECT
BLUFF ROAD (CTY. HWY. 6)
BRIDGE REPLACEMENT
OVER FOUNTAIN CREEK
MONROE COUNTY, IL

REV.	DATE	DESCRIPTION
1		
2		
3		

DRAWN BY: KBF/JWS	SHEET
DESIGNED BY: BJK	18
CHECKED BY: SJK	OF 67 SHEETS
APPROVED BY: SJK	PROJECT DESCRIPTION
PROJECT NUMBER: 16-040125	BLUFF RD. BRIDGE OVER FOUNTAIN CRK.

- ISSUED FOR REVIEW
- ISSUED FOR BIDDING
- ISSUED FOR CONSTR.
- RECORD DRAWING