

| | | |
|---------------------|-----------------|--------|
| FIS ROUTE | IDOT SECTION | COUNTY |
| 1857 | 04-00071-00-BR | MONROE |
| FEDERAL AID PROJECT | ILLINOIS | |
| IDOT JOB NO. | BR-RS-1857(121) | |
| IDOT CONTRACT NO. | 97323 | |

THOUVENOT, WADE & MOERCHEN, INC.
ENGINEERS • SURVEYORS • PLANNERS



CORPORATE OFFICE
4940 OLD COLLINSVILLE RD.
SWANSEA, ILLINOIS 62226
TEL (618) 624-4488
FAX (618) 624-6688
corp@twm-inc.com

EDWARDSVILLE OFFICE
1015B CENTURY DRIVE
EDWARDSVILLE, ILLINOIS 62025
TEL (618) 656-4040
FAX (618) 656-4343
edwardsville@twm-inc.com

ST. LOUIS OFFICE
1001 CRAIG ROAD, SUITE 260
ST. LOUIS, MISSOURI 63146
TEL (314) 236-5052
FAX (314) 872-2194
stlouis@twm-inc.com

WATERLOO OFFICE
113 SOUTH MAIN STREET
WATERLOO, ILLINOIS 62298
TEL (618) 939-5050
FAX (618) 939-3938
waterloo@twm-inc.com

| | |
|-------------------------------------|-------------|
| PROFESSIONAL REGISTRATIONS | LICENSE NO. |
| ILLINOIS PROFESSIONAL DESIGN FIRM | 184-001220 |
| PROFESSIONAL ENGINEERING CORP. | 62-035370 |
| PROFESSIONAL STRUCTURAL ENGR. CORP. | 81-005202 |
| ILLINOIS PROF. LAND SURVEYING CORP. | 048-000029 |
| MISSOURI PROFESSIONAL ENGR. CORP. | NC 001528 |
| MISSOURI LAND SURVEYING CORP. | NC 000346 |

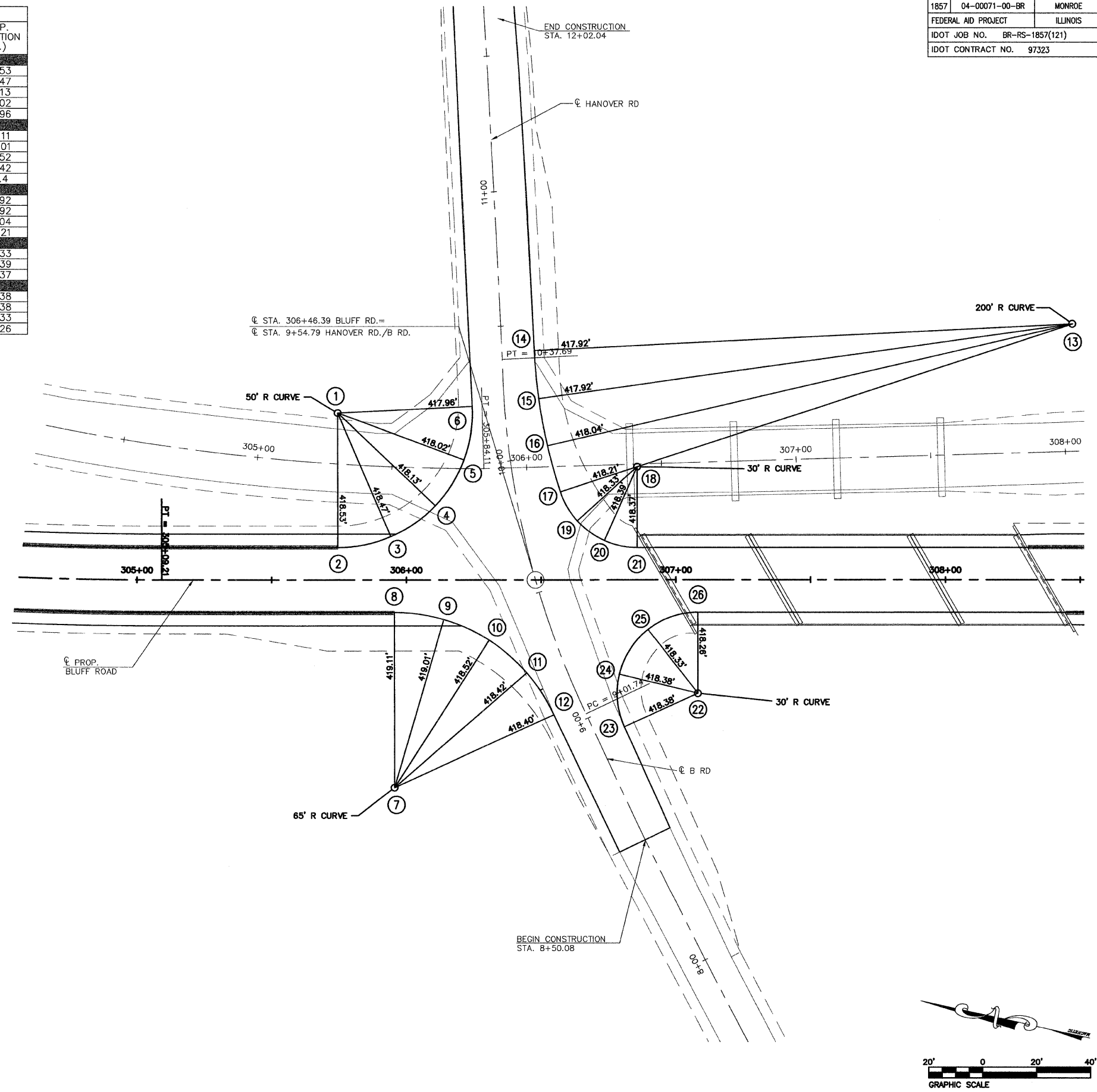
SEAL

FINAL

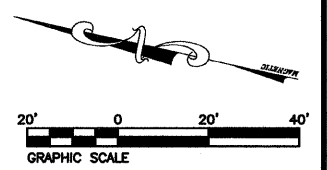
Signature: _____
Signature Date: _____
Expiration Date: _____
STATEMENT OF RESPONSIBILITY
I hereby confirm that the document herein to be authenticated by my seal is restricted to this sheet, and I hereby disclaim any responsibility for all other drawings, specifications, estimates, reports or other documents or instruments relating to or intended to be utilized for any other part of the architectural, engineering or survey project.

| POINT # | STATION (FT.) | OFFSET (FT.) | EASTING COORDINATE (FT.) | NORTHING COORDINATE (FT.) | E.O.P. ELEVATION (FT.) |
|-----------|---------------|--------------|--------------------------|---------------------------|------------------------|
| 1 (R.P.) | 305+74.56 | 62.00' LT. | 2,270,838.1802 | 626,666.1437 | |
| 2 | 305+74.56 | 12.00' LT. | 2,270,789.2864 | 626,655.6845 | 418.53 |
| 3 | 305+94.26 | 16.04' LT. | 2,270,797.3616 | 626,637.2674 | 418.47 |
| 4 | 306+10.77 | 27.52' LT. | 2,270,812.0397 | 626,623.5213 | 418.13 |
| 5 | 306+21.43 | 44.58' LT. | 2,270,830.9462 | 626,616.6698 | 418.02 |
| 6 | 306+24.50 | 64.45' LT. | 2,270,851.0229 | 626,617.8212 | 417.96 |
| 7 (R.P.) | 305+95.56 | 77.00' RT. | 2,270,706.6491 | 626,616.5279 | |
| 8 | 305+95.56 | 12.00' RT. | 2,270,770.2111 | 626,630.1248 | 419.11 |
| 9 | 306+13.86 | 14.63' RT. | 2,270,771.4682 | 626,611.6813 | 419.01 |
| 10 | 306+30.68 | 22.30' RT. | 2,270,767.4824 | 626,593.6299 | 418.52 |
| 11 | 306+44.66 | 34.40' RT. | 2,270,758.5760 | 626,577.4306 | 418.42 |
| 12 | 306+54.66 | 49.94' RT. | 2,270,745.4695 | 626,564.3936 | 418.4 |
| 13 (R.P.) | 308+47.28 | 94.81' LT. | 2,270,927.3089 | 626,406.3197 | |
| 14 | 306+47.52 | 85.00' LT. | 2,270,875.9379 | 626,599.6097 | 417.92 |
| 15 | 306+49.18 | 67.30' LT. | 2,270,858.9722 | 626,594.2828 | 417.92 |
| 16 | 306+52.41 | 49.81' LT. | 2,270,842.5468 | 626,587.4699 | 418.04 |
| 17 | 306+57.17 | 32.68' LT. | 2,270,826.7915 | 626,579.2250 | 418.21 |
| 18 (R.P.) | 306+85.69 | 42.00' LT. | 2,270,841.8691 | 626,553.2893 | |
| 19 | 306+63.42 | 21.90' LT. | 2,270,817.5559 | 626,570.8639 | 418.33 |
| 20 | 306+73.50 | 14.59' LT. | 2,270,812.5131 | 626,559.4719 | 418.39 |
| 21 | 306+85.69 | 12.00' LT. | 2,270,812.5329 | 626,547.0137 | 418.37 |
| 22 (R.P.) | 307+08.17 | 42.00' RT. | 2,270,764.4294 | 626,513.7379 | |
| 23 | 306+80.85 | 54.40' RT. | 2,270,746.5862 | 626,537.8547 | 418.38 |
| 24 | 306+79.02 | 34.89' RT. | 2,270,765.2901 | 626,543.7255 | 418.38 |
| 25 | 306+89.64 | 18.41' RT. | 2,270,783.6265 | 626,536.7915 | 418.33 |
| 26 | 307+08.17 | 12.00' RT. | 2,270,793.7657 | 626,520.0135 | 418.26 |

NOTES:
1. RADIUS POINTS INDICATED BY ABBREVIATION (R.P.) IN TABLE ABOVE.
2. POINTS INDICATED BY SYMBOL (#) IN PLAN VIEW.



NOTES:
1. ALL ELEVATIONS PROVIDED ARE EDGE-OF-PAVEMENT ELEVATIONS.
2. ALL EDGE-OF-PAVEMENT CURVE RADII INFORMATION IS IN REFERENCE TO THE PROPOSED BLUFF ROAD HORIZONTAL ALIGNMENT.



TITLE: INTERSECTION DETAILS
EDGE-OF-PAVEMENT WARPING PLAN
BLUFF ROAD (CTY. HWY. 6)

PROJECT: BLUFF ROAD (CTY. HWY. 6)
BRIDGE REPLACEMENT
OVER FOUNTAIN CREEK
MONROE COUNTY, IL

| REV | DATE | DESCRIPTION |
|-----|------|-------------|
| | | |
| | | |
| | | |

| | |
|--|--|
| DRAWN BY: KBF/JWS | SHEET: 25 |
| DESIGNED BY: BJK | OF 67 SHEETS |
| CHECKED BY: SJK | PROJECT DESCRIPTION: BLUFF RD. BRIDGE OVER FOUNTAIN CRK. |
| APPROVED BY: SJK | PROJECT NUMBER: 116-040125 |
| <input type="checkbox"/> ISSUED FOR REVIEW <input type="checkbox"/> ISSUED FOR BIDDING <input checked="" type="checkbox"/> ISSUED FOR CONSTR. <input type="checkbox"/> RECORD DRAWING | |

P:\040125\Roadway Plans\DMG\INTERSECTION_DETAILS_EDP.dwg 10/12/2007 6:59:00 AM CDT