

F.A.P. RTE.	SECTION	COUNTY	TOTAL SHEETS	SHEET NO.
869	101VB18-1	EBANKLIN	---	11
STA.	TO STA.			
FED. ROAD DIST. NO.	ILLINOIS	FED. AID PROJECT		
CONTRACT NO. 98821				

PROP. CURVE DETOUR-1
 PI STA. = 0+86.07
 $\Delta = 13^\circ 05' 38''$ (LT)
 $D = 7^\circ 38' 22''$
 $R = 750.00'$
 $T = 86.07'$
 $L = 171.40'$
 $E = 4.92'$
 P.C. STA. = 0+00.00
 P.T. STA. = 1+71.40

PIPE CULVERTS, CLASS D,
 TYPE 1 15" (TEMPORARY)
 METAL END SECTIONS, 15"
 STONE RIPRAP CLASS A4
 STA 2+91.76

TEMPORARY BRIDGE COMPLETE
 STRUCTURE STA 4+77.79 (RUNAROUND)=
 45° LT STA 177+35.06 (IL 34)
 BRIDGE LENGTH=121'-6" BK TO BK ABUTMENTS
 BRIDGE CLEAR WIDTH=14'-0" MIN
 PILE BENT ABUTMENTS WITH 1.5:1 ENDSLOPES
 WEST AND EAST PIER 12.5' MIN AT RIGHT ANGLES
 FROM C OF TRACKS
 ALL ABUTMENTS AND PIER SHOWN
 SKEWED $22^\circ 15'$
 21'-3" MIN VERTICAL CLEARANCE
 HS20-44' LOADING

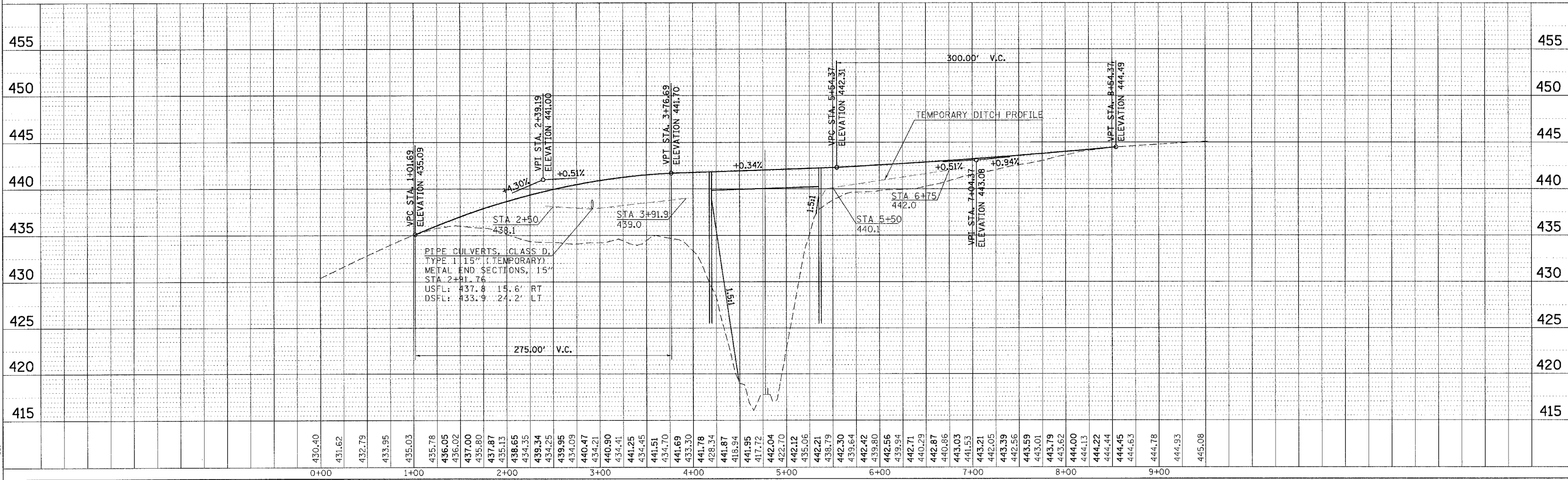
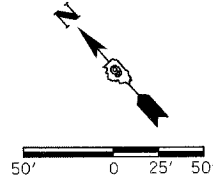
PROP. CURVE DETOUR-4
 PI STA. = 8+70.27
 $\Delta = 13^\circ 05' 38''$ (LT)
 $D = 7^\circ 38' 22''$
 $R = 750.00'$
 $T = 86.07'$
 $L = 171.40'$
 $E = 4.92'$
 P.C. STA. = 7+84.19
 P.T. STA. = 9+55.59

PROP. CURVE DETOUR-2
 PI STA. = 2+57.47
 $\Delta = 13^\circ 05' 38''$ (RT)
 $D = 7^\circ 38' 22''$
 $R = 750.00'$
 $T = 86.07'$
 $L = 171.40'$
 $E = 4.92'$
 P.C. STA. = 1+71.40
 P.T. STA. = 3+42.80

PROP. CURVE DETOUR-3
 PI STA. = 6+98.87
 $\Delta = 13^\circ 05' 38''$ (RT)
 $D = 7^\circ 38' 22''$
 $R = 750.00'$
 $T = 86.07'$
 $L = 171.40'$
 $E = 4.92'$
 P.C. STA. = 6+12.79
 P.T. STA. = 7+84.19

DETOUR SUPERELEVATION RATES	
STA - STA	S.E. (PT/PT)
0+39 - 1+35	0.015
2+31 - 3+22	0.030
3+58 - 5+97	0.015
6+33 - 7+24	0.030
8+20 - 9+55	0.015

PLAN	DATE
NO.	BY
NO.	BY
NO.	BY
NO.	BY



PROFILE	DATE
NO.	BY
NO.	BY
NO.	BY

10/1/2007
 C:\p\proj\101VB18-1\101VB18-1.dwg
 56.28866 / IN
 d:\working\101

PLAN /PROFILE ON IL 34 DETOUR OVER CN /IC RR