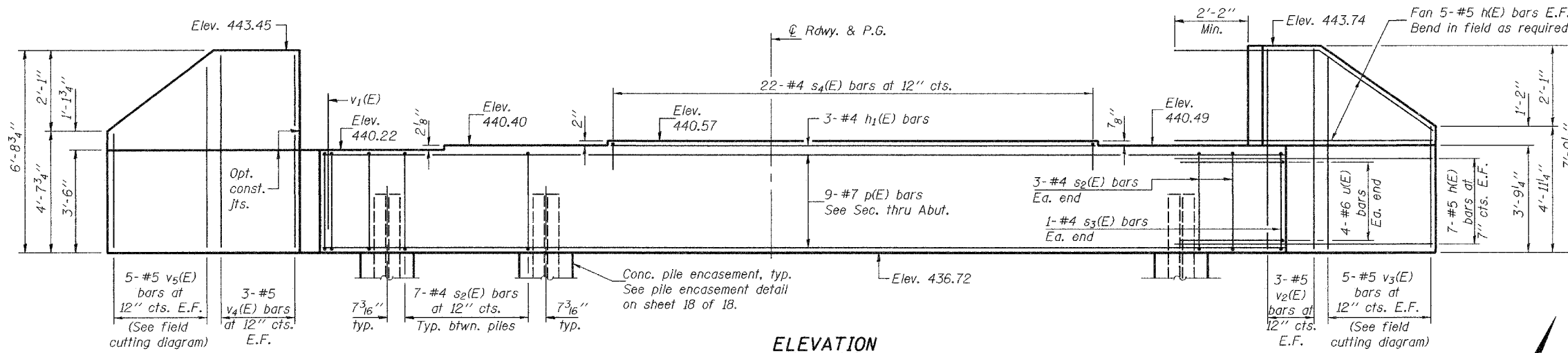


Notes: Pour steps monolithically with cap.
Space reinforcement in cap to miss anchor bolts.

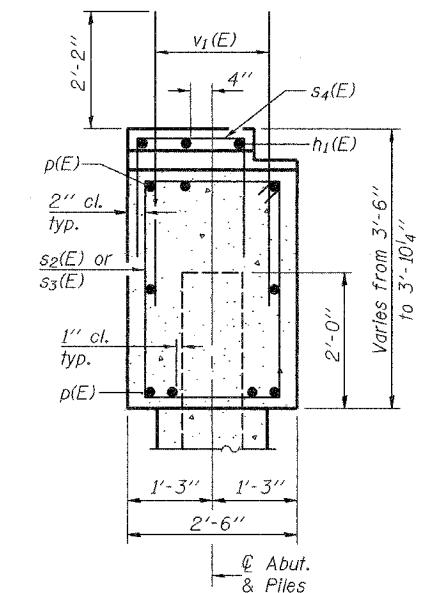
STATE OF ILLINOIS
DEPARTMENT OF TRANSPORTATION

ROUTE NO.	SECTION	COUNTY	STATION	SHEET NO.	SHEET NO. 13
FAP 869	(10IVB) B-1	FRANKLIN	48	42	18 SHEETS
FED. ROAD DIST. NO. 7	ILLINOIS	FED. AID PROJECT-			

Contract No. 98821



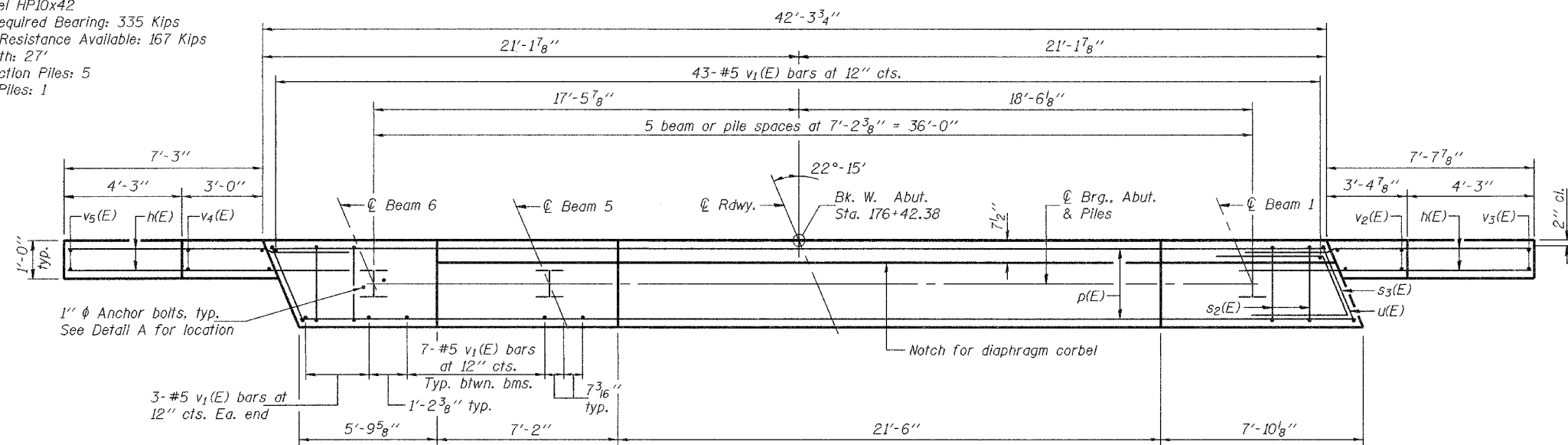
ELEVATION



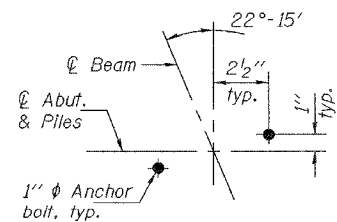
SEC. THRU ABUT.

PILE DATA

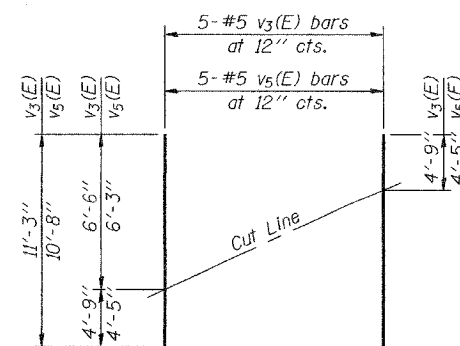
Type: Steel HP10x42
Nominal Required Bearing: 335 Kips
Factored Resistance Available: 167 Kips
Est. Length: 27'
No. Production Piles: 5
No. Test Piles: 1



PLAN

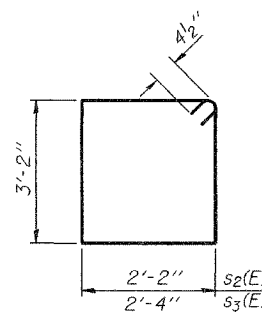


DETAIL A

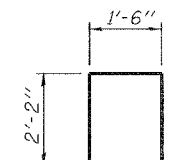


FIELD CUTTING DIAGRAM

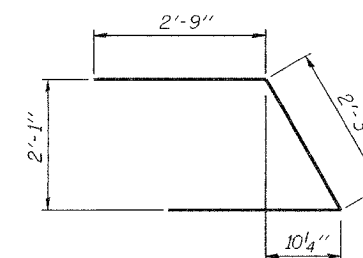
Order v3(E) & v5(E) full length.
Cut as shown and use remainder of bars in opposite face.



BARS s2(E) & s3(E)



BAR s4(E)



BAR u(E)

BILL OF MATERIAL

Bar	No.	Size	Length	Shape
h(E)	48	#5	10'-0"	—
h1(E)	3	#4	21'-3"	—
p(E)	9	#7	42'-0"	—
s2(E)	41	#4	11'-5"	□
s3(E)	2	#4	11'-9"	□
s4(E)	22	#4	5'-10"	□
u(E)	8	#6	7'-9"	△
v1(E)	84	#5	4'-4"	—
v2(E)	6	#5	6'-8"	—
v3(E)	5	#5	11'-3"	—
v4(E)	6	#5	6'-5"	—
v5(E)	5	#5	10'-8"	—
Structure Excavation		Cu. Yd.	82	
Concrete Structures		Cu. Yd.	18.2	
Reinforcement Bars, Epoxy Coated		Pound	2400	
Furnishing Steel Piles HP10x42		Foot	135	
Driving Steel Piles		Foot	135	
Test Pile Steel HP10x42		Each	1	
Concrete Encasement		Cu. Yd.	2.1	
Anchor Bolts, 1"		Each	12	

DESIGNED	Dewey H. Coultas
CHECKED	Ray Ahanchi
DRAWN	h.t. duong
CHECKED	DHC/GRA

Nov. 30, 2007
EXAMINED *Thomas J. Donagale*
PASSED *Ralph E. Anderson*
ENGINEER OF BRIDGE DESIGN
ENGINEER OF BRIDGES AND STRUCTURES

WEST ABUTMENT
F.A.P. RTE. 869 - SEC. (10IVB)B-1
FRANKLIN COUNTY
STATION 177+17.38
STRUCTURE NO. 028-0077