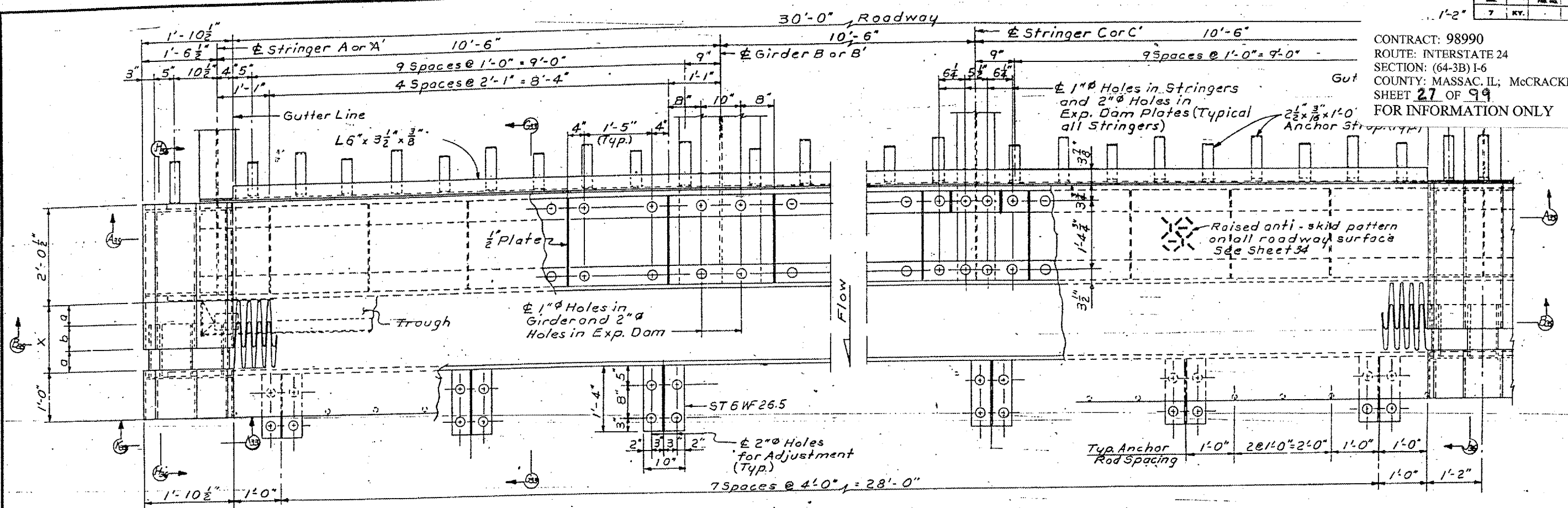
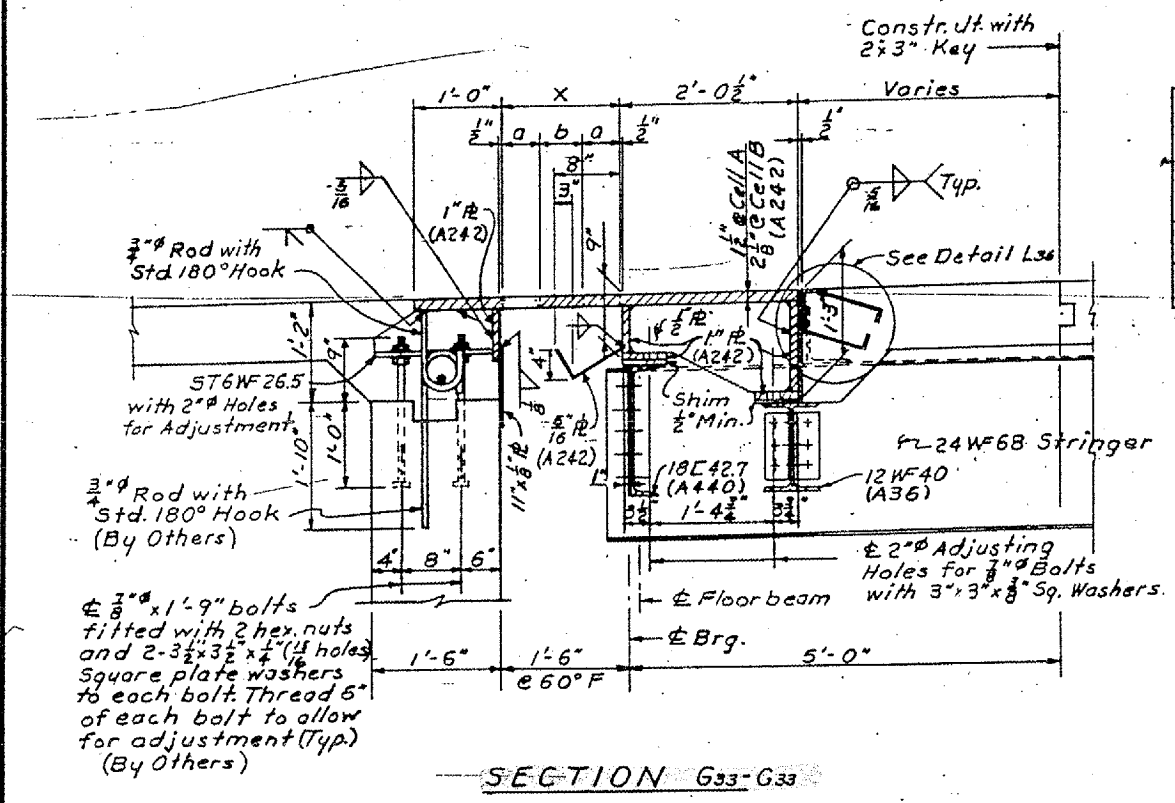


CONTRACT: 98990  
 ROUTE: INTERSTATE 24  
 SECTION: (64-3B) I-6  
 COUNTY: MASSAC. IL; McCracken, KY  
 SHEET 27 OF 99  
 FOR INFORMATION ONLY



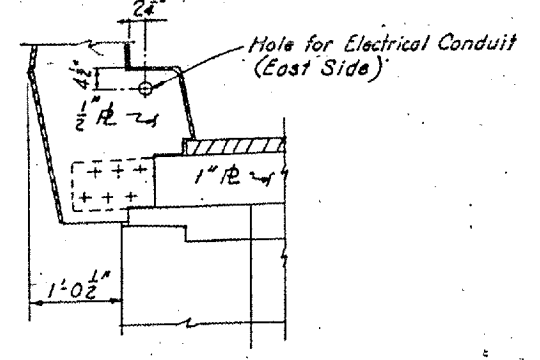
PLAN



SECTION G33-G33

LOCATION	DIMENSION AT TEMPERATURE (F)																							
	-20°			0°			20°			40°			60°			80°			-100°			120°		
	a	b	x	a	b	x	a	b	x	a	b	x	a	b	x	a	b	x	a	b	x	a	b	x
CELL-A	5 3/8"	2 3/8"	1-2 3/8"	5 3/8"	3 3/8"	1-1 3/8"	4 15/16"	3 9/16"	1-1 7/16"	4 1/2"	4	1-1 1/16"	4"	4 1/2"	1-0 1/2"	3 1/2"	5"	1-0"	3 1/8"	5 7/8"	11 1/8"	2 3/8"	5 1/8"	11 1/8"
CELL-B	9"	2 1/2"	1-8 1/2"	8 1/2"	3 1/8"	1-7 1/8"	7 3/8"	4 3/8"	1-6 3/8"	6 1/16"	5 1/16"	1-5 1/16"	5 1/4"	6 1/4"	1-4 1/4"	4 7/8"	7 1/8"	1-3 1/8"	3 3/8"	8 1/8"	1-2 3/8"	2 7/8"	9 1/8"	1-1 1/8"

EXPANSION DAM WEIGHT  
 CELL A 34,758 Lbs.  
 CELL B 41,676 Lbs.



SECTION K33-K33

EXPANSION DAMS  
 AT CELLS A & B  
 STRUCTURAL STEEL

KENTUCKY DEPARTMENT OF HIGHWAYS  
 ILLINOIS DEPARTMENT OF PUBLIC WORKS  
 AND BUILDINGS

PROJECTS 124-1(6)38, 124-9(1)10, 124-1(6)11  
 BRIDGE OVER OHIO RIVER ON 124  
 BETWEEN MACCRACKEN COUNTY, KENTUCKY  
 AND MASSAC COUNTY, ILLINOIS

HAZLET & BRIDAL  
 Consulting Engineers  
 File No. 508

BRIDGE  
 NUMBER

DRAWING NO.  
 17471

INDEX

DATE: \_\_\_\_\_  
 BY: \_\_\_\_\_  
 CHECKED BY: \_\_\_\_\_  
 APPROVED BY: \_\_\_\_\_  
 TITLE: \_\_\_\_\_  
 SCALE: \_\_\_\_\_  
 SHEET NO.: \_\_\_\_\_  
 TOTAL SHEETS: \_\_\_\_\_