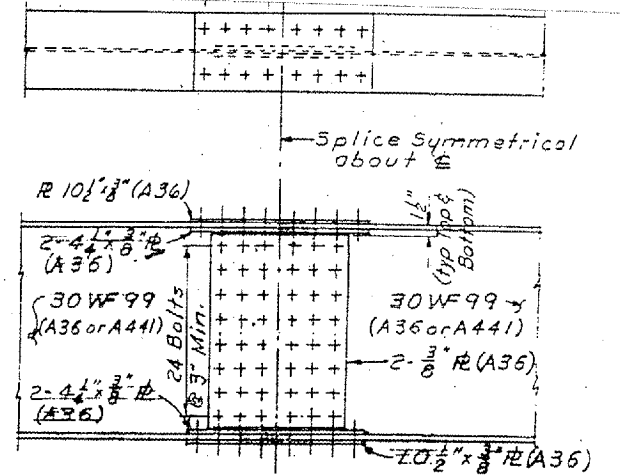
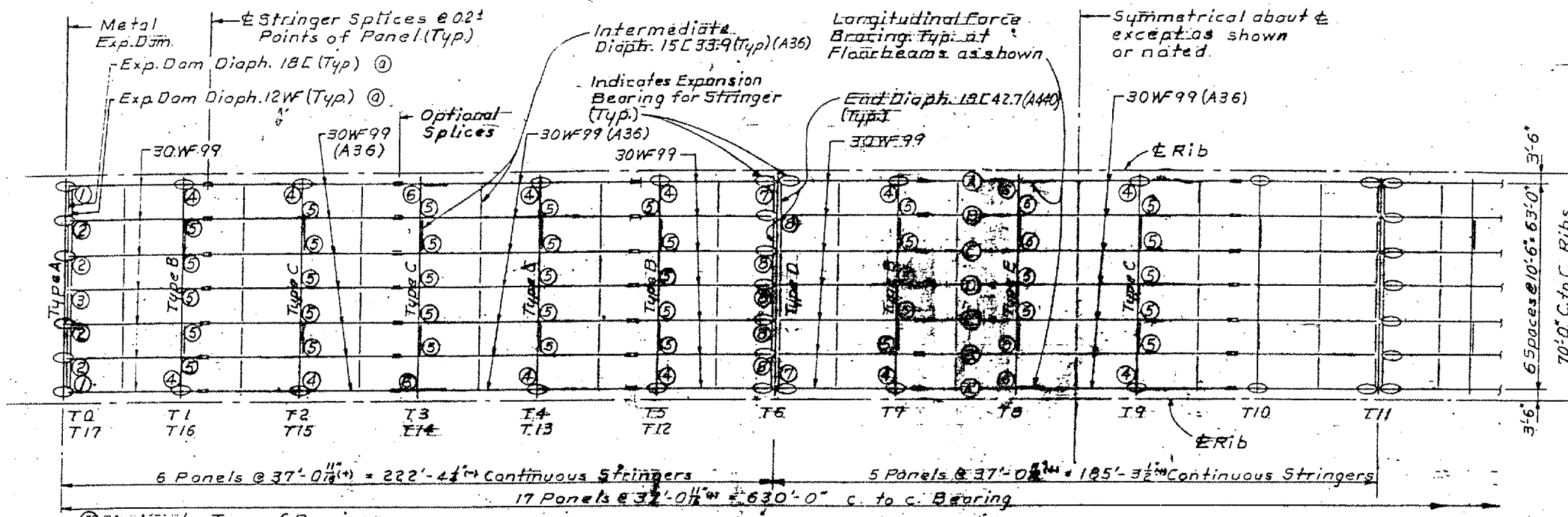
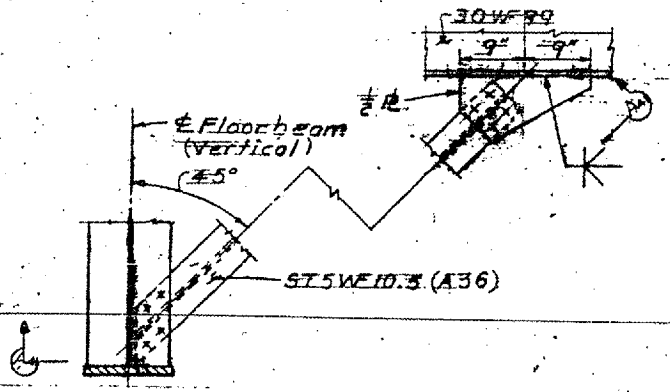
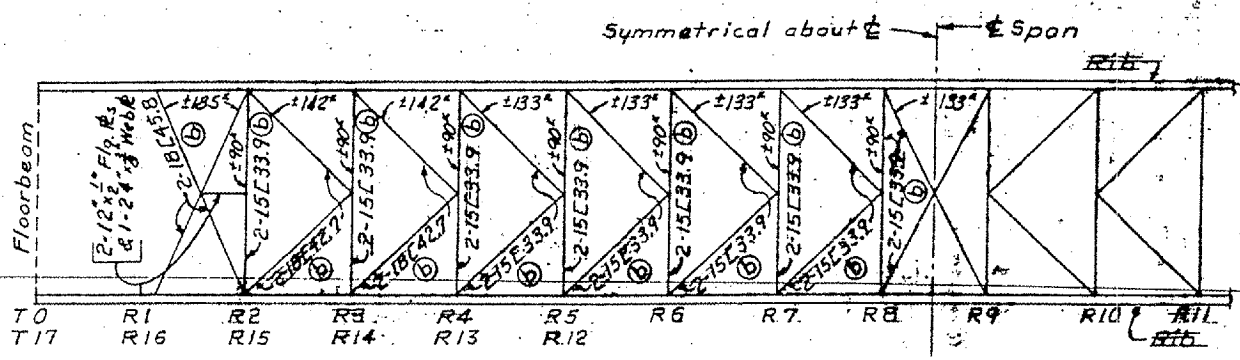


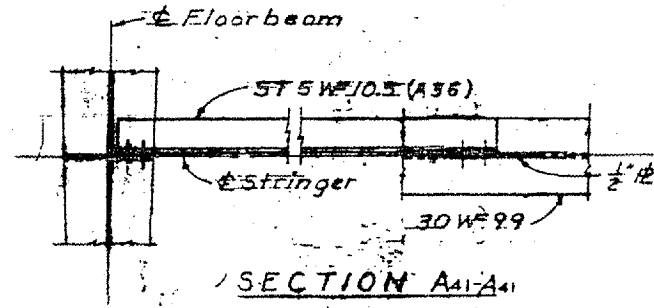
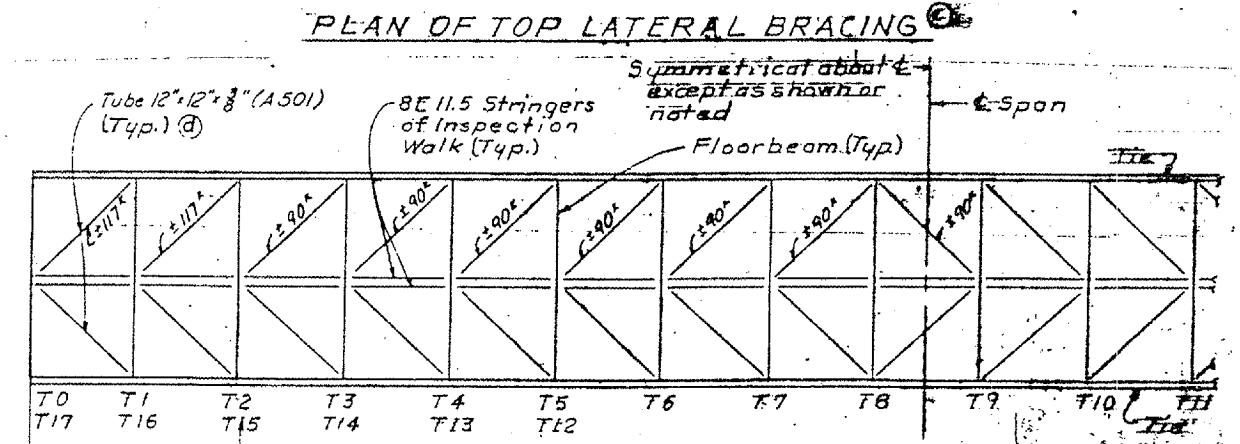
CONTRACT: 98990  
 ROUTE: INTERSTATE 24  
 SECTION: (64-3B)1-6  
 COUNTY: MASSAC, IL; McCracken, KY  
 SHEET 32 OF 99  
 FOR INFORMATION ONLY



FLOOR SYSTEM FRAMING PLAN



NOTE:  
 ① See Expansion Dam Detail, Sheet 46 for Details.  
 ② See Sheet 46 for details of Stiffeners and Web Plates.  
 ③ All bracing shall be A36 steel and shall be detailed to the deformed length of the tie or rib.  
 ④ Camber the Tubes 12" x 12" up 1/8" For 30W Stringers turn any natural camber up.  
 For Diaphragm Details see Sheet 56



UNIT II STRUCTURAL STEEL QUANTITIES (LBS)

Part of Project	Drains	Cable Strand	A36	A440	ADD	Shoes	Exp. Dam
121.9110	16,605	109,268	156,303	10,700	1,064,912	49,814	64,986
					770,868		

FRAMING PLAN FOR UNIT II STRUCTURAL STEEL

KENTUCKY DEPARTMENT OF HIGHWAYS  
 ILLINOIS DEPARTMENT OF PUBLIC WORKS  
 AND BUILDINGS  
 PROJECTS 124-1(6)356, 124-9(1)10, 124-1(6)11  
 BRIDGE OVER OHIO RIVER CH 134  
 BETWEEN McCracken COUNTY, KENTUCKY  
 AND MASSAC COUNTY, ILLINOIS

HAZLET & BIDAL Consulting Engineers  
 File No. 388

BRIDGE NUMBER

DRAWING NO. 17471

INDEX

