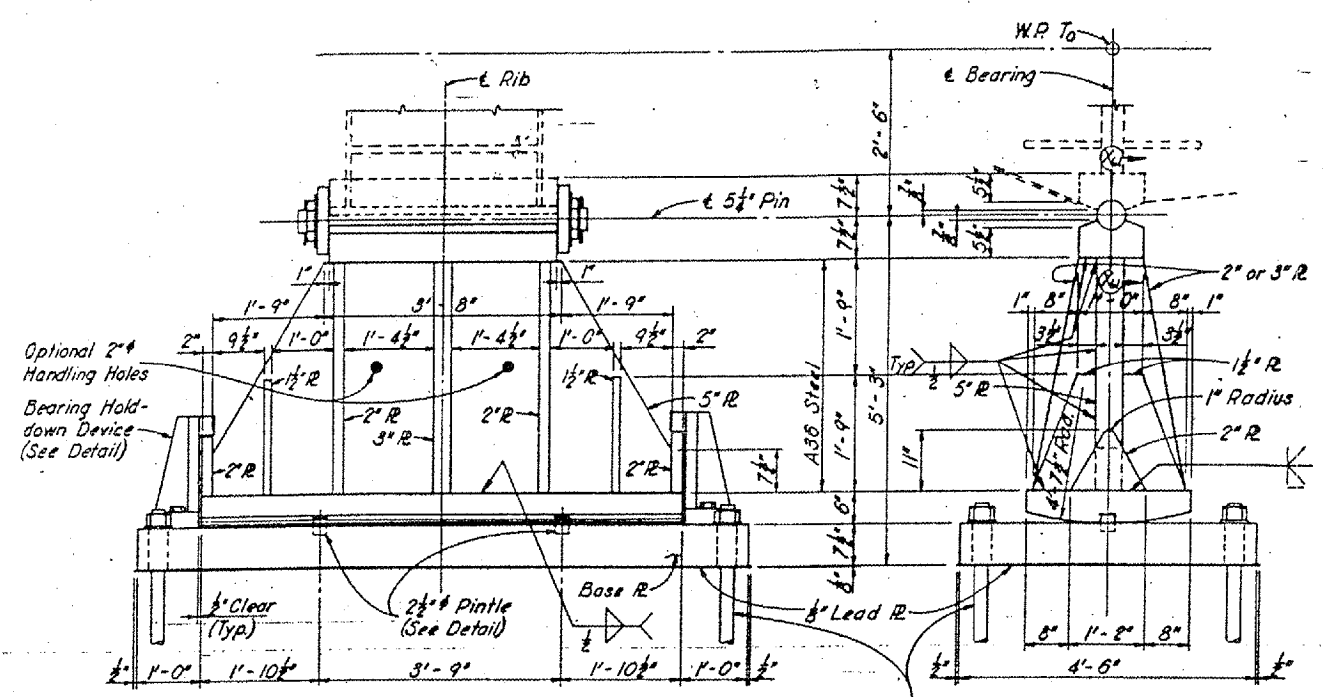
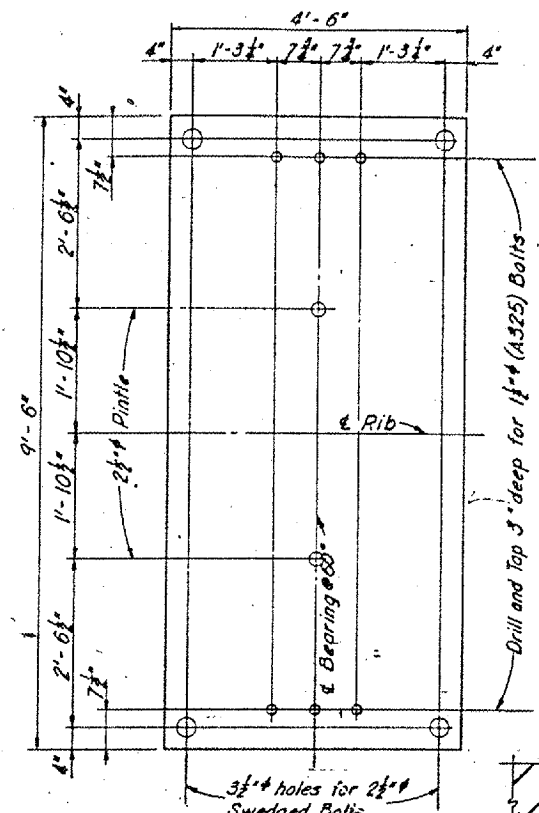


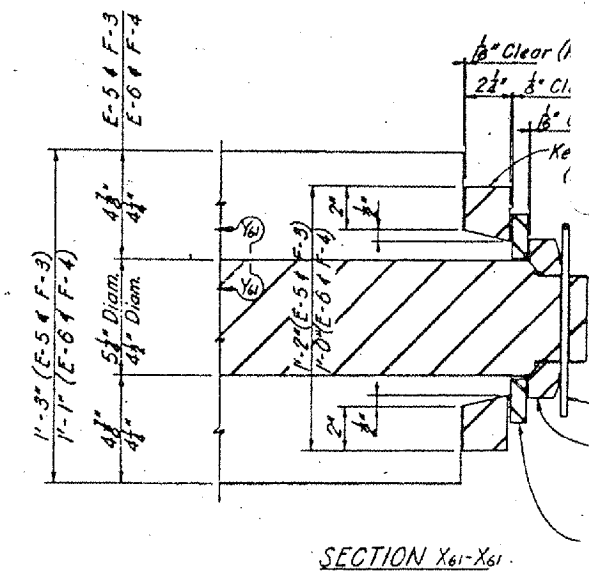
CONTRACT: 98990
 ROUTE: INTERSTATE 24
 SECTION: (64-3B) I-6
 COUNTY: MASSAC, IL; McCRACKEN, KY
 SHEET 43 OF 99
 FOR INFORMATION ONLY



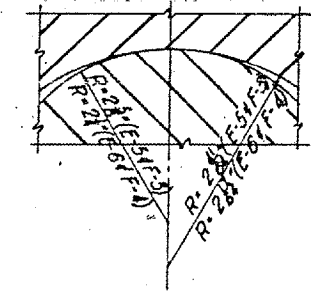
FRONT ELEVATION
 END ELEVATION (Hold-down devices removed)
BEARING TYPE E-5
 Use at Pier 12 - 2 Req'd.



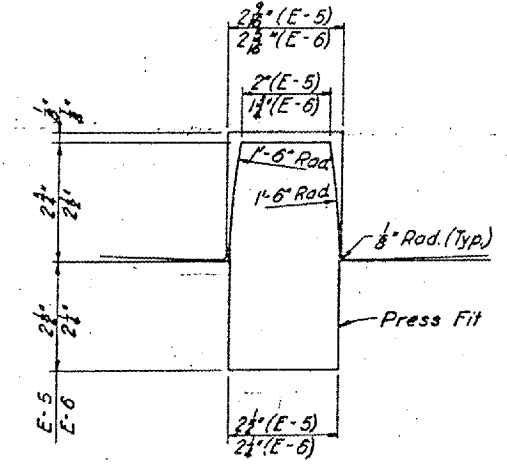
BASE R PLAN



SECTION X61-X61

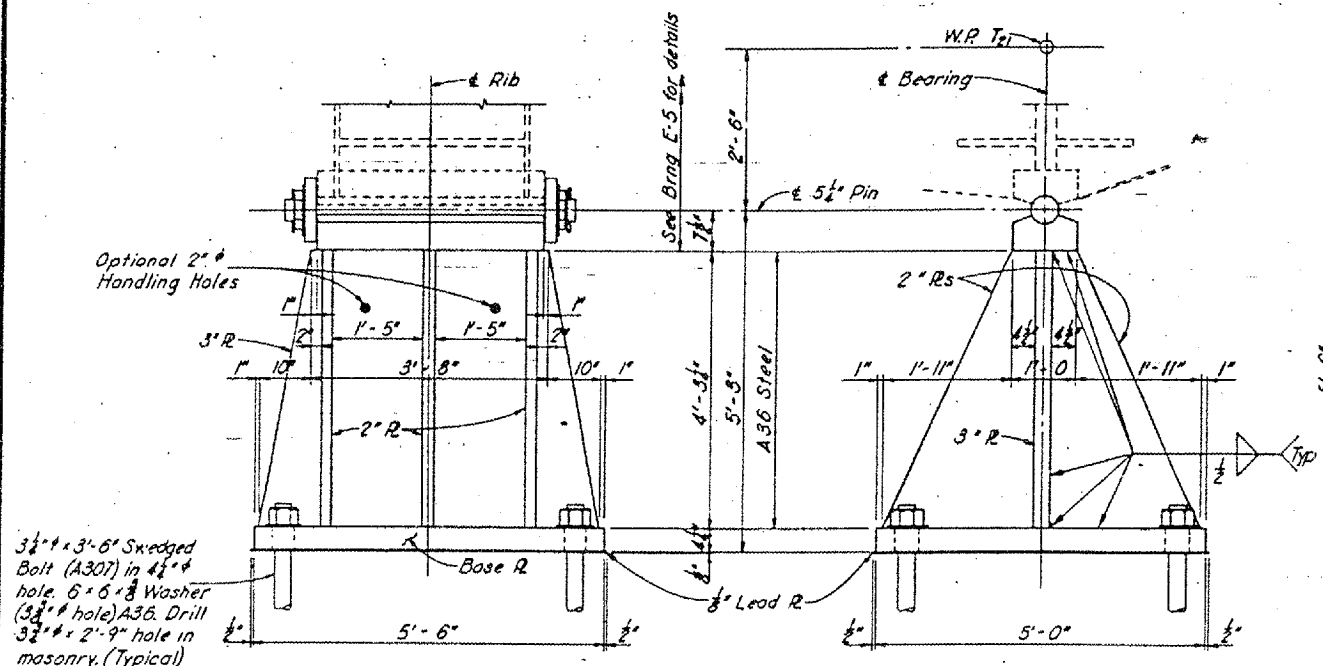


SECTION Y61-Y61

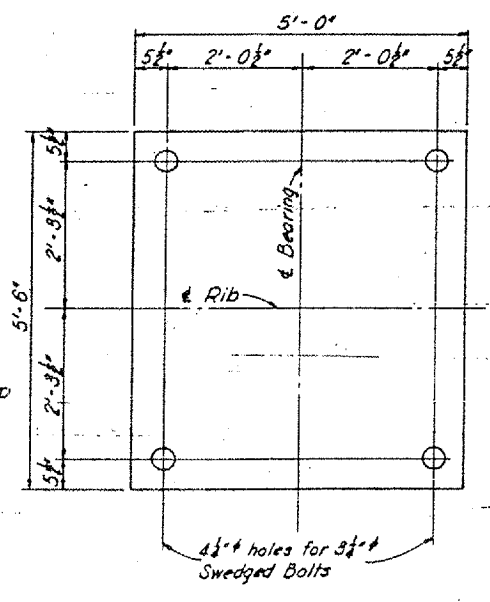


PINTLE DETAIL

Shoes shall be vertical at 60° F after all dead load (including future wearing surface) has been applied. See Sh 60. For Surface Finishes see sheet 31 for Expansion Bearing and sheet 30 for Fixed Bearing. See sheet 30 for "White Lead & Tallow", "Welding", "Anchor Bolts" and "Setting Masonry Plates" Notes.



FRONT ELEVATION
 END ELEVATION
BEARING TYPE F-3
 Use at Pier 13 - 2 Req'd



BASE R PLAN

BEARING DETAILS
 UNIT V
 STRUCTURAL STEEL

SHEET 61 OF 121

**KENTUCKY DEPARTMENT OF HIGHWAYS
 ILLINOIS DEPARTMENT OF PUBLIC WORKS
 AND BUILDINGS**

PROJECTS 124-116358, 124-9(1)10, 124-11611
 BRIDGE OVER OHIO RIVER ON 124
 BETWEEN McCRACKEN COUNTY, KENTUCKY
 AND MASSAC COUNTY, ILLINOIS

HAZLET & ENGAL Consulting Engineers PH: No. 588	BRIDGE NUMBER	DRAWING NO. 17471	INDEX
---	------------------	----------------------	-------