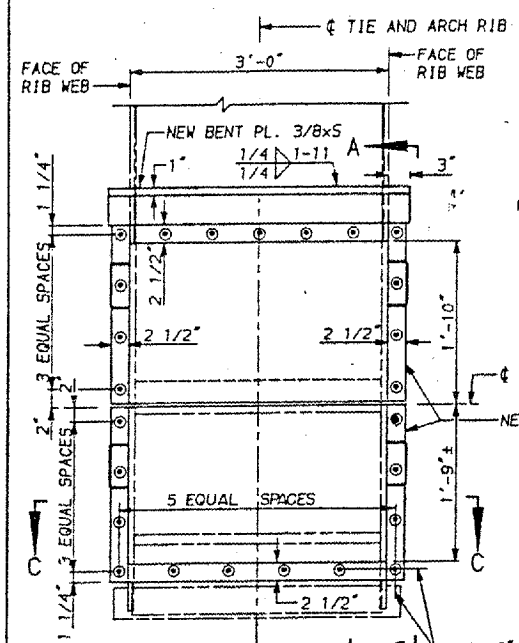
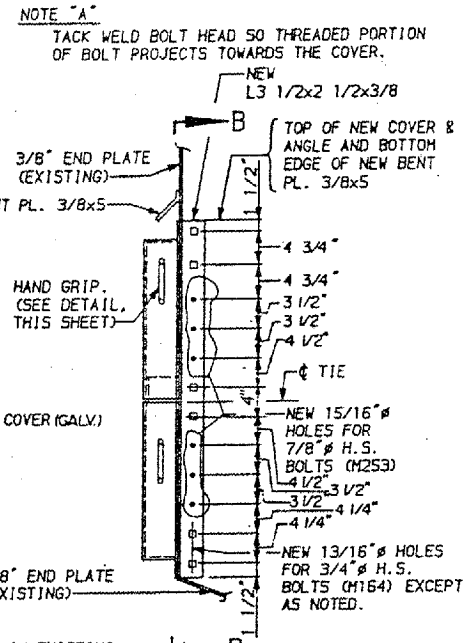


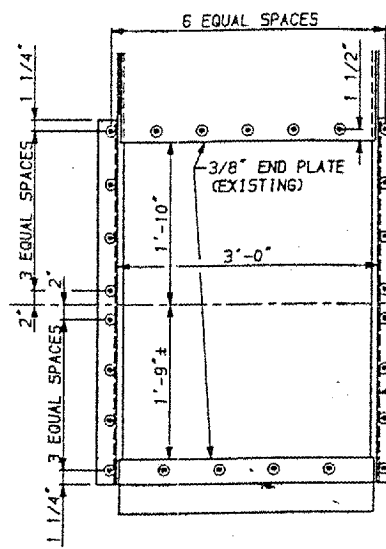
24	64-3B-1-3	*	32	17
ILLINOIS PROJECT				
MASSAC, IL. & McCRACKEN, KY.				



ANCHORAGE ASSEMBLY COVER DETAIL A

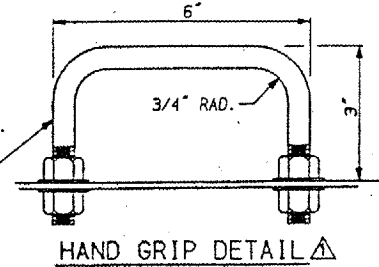


VIEW A-A

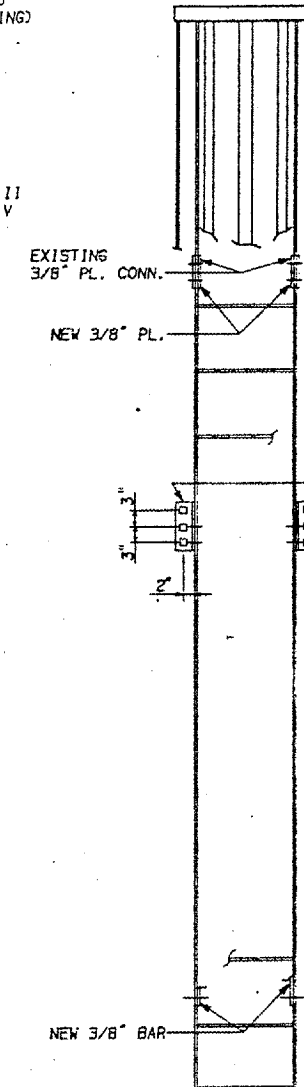


VIEW B-B

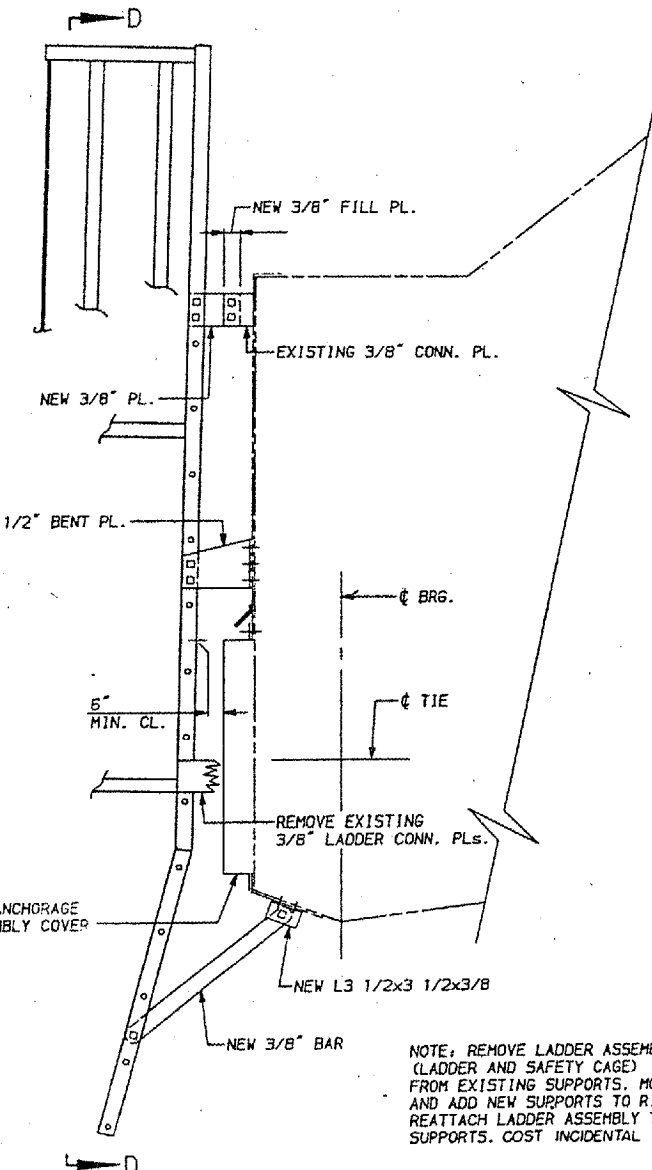
1/2" STEEL ROD WITH HEX. NUTS & WASHERS. (ASTM A 307) (GALV.)



HAND GRIP DETAIL

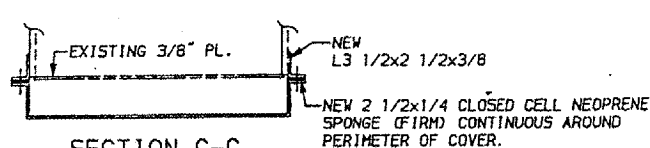


VIEW D-D

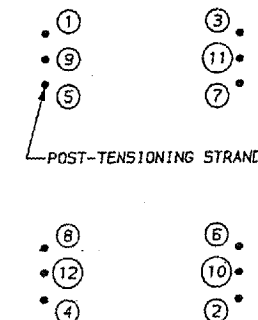


LADDER SUPPORT MODIFICATION

NOTE: REMOVE LADDER ASSEMBLY (LADDER AND SAFETY CAGE) FROM EXISTING SUPPORTS. MODIFY AND ADD NEW SUPPORTS TO RIB END. REATTACH LADDER ASSEMBLY TO NEW SUPPORTS. COST INCIDENTAL



SECTION C-C

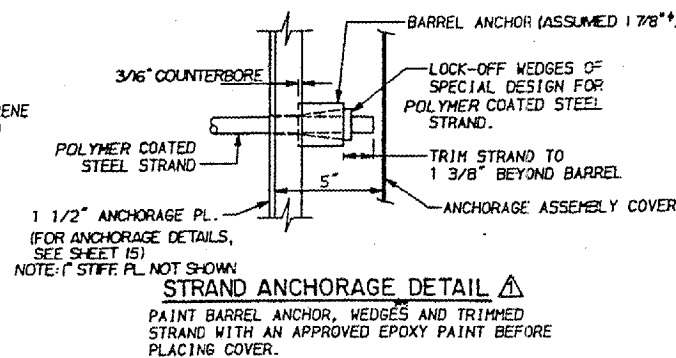


STRAND TENSIONING SEQUENCE

STRAND DATA: 0.5 INCH DIAMETER, (AREA=0.217 IN²) POLYMER COATED SEVEN-WIRE LOW RELAXATION STEEL STRAND CONFORMING TO ASTM A416, GRADE 270.

	UNIT II	UNIT V
FSU	270,000 PSI	270,000 PSI
FS'I	158,000 PSI	202,500 PSI
FS'A	153,000 PSI	193,500 PSI

WHERE FS'I = MAXIMUM INITIAL LOAD AFTER ANCHORAGE
 FS'A = DESIGN LOAD



STRAND ANCHORAGE DETAIL

PAINT BARREL ANCHOR, WEDGES AND TRIMMED STRAND WITH AN APPROVED EPOXY PAINT BEFORE PLACING COVER.

ITEM	QUANTITIES		
	UNIT	UNIT II	UNIT V
POST-TENS. STRAND	L.F.	15,120	17,520
STRUCTURAL STEEL	LBS.	10,300	10,900

NOTES:

- FOR GENERAL NOTES, SEE SHEET 3.
- NEW GALVANIZED ANCHORAGE ASSEMBLY COVER SHALL ALSO BE PAINTED WITH THE SAME INTERMEDIATE COAT AND TOP COAT AS USED IN THE THREE COAT PAINT SYSTEM.
- Ø13/16" HOLE IN EXISTING 3/8" PL OR NEW ANGLE AND 7/8" HOLE IN NEW 1/8" COVER FOR 3/4" H.S. BOLT (M164)
- ØNEW 13/16" HOLES FOR 3/4" H.S. BOLTS (M164).
- PREPARE GALVANIZED SURFACES BY USING WASH COAT AFTER CLEANING.

REV.	NO.	DATE	DESCRIPTION

F A I ROUTE 24 (INTERSTATE 24)
 OVER OHIO RIVER
 MASSAC COUNTY ILLINOIS

POST-TENSIONING DETAILS 3

PREPARED BY
MODJESKI AND MASTERS
 CONSULTING ENGINEERS

DATE: 10/11/88
 DRAWN: DTP
 CHKD: HIC
 APPD: JEP