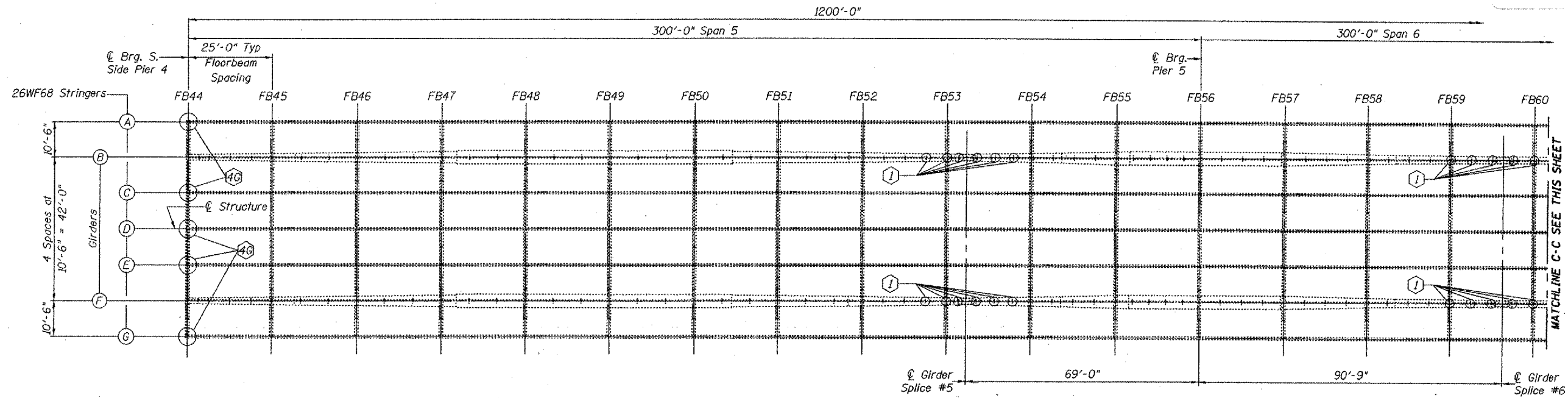


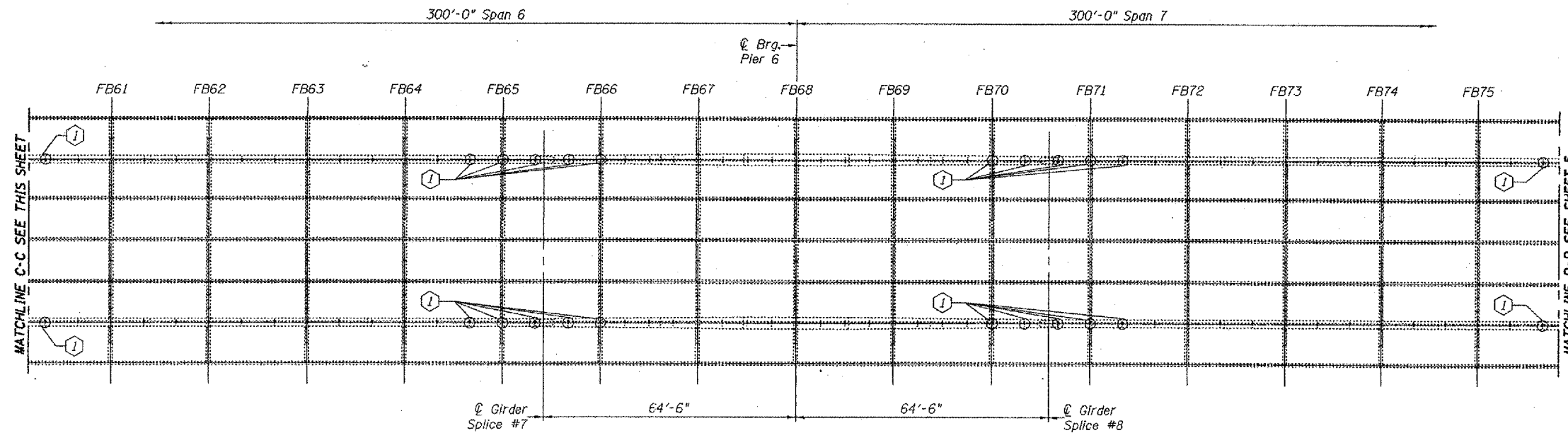
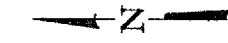
STATE OF ILLINOIS
DEPARTMENT OF TRANSPORTATION

ROUTE NO.	SECTION
FAI 24	*
FED. ROAD DIST. NO. 7	
*64-	

CONTRACT: 98990
ROUTE: INTERSTATE 24
SECTION: (64-3B) I-6
COUNTY: MASSAC, IL; McCracken, KY
SHEET 84 OF 99
FOR INFORMATION ONLY



**PARTIAL FRAMING PLAN
SPANS 5 AND 6**



**PARTIAL FRAMING PLAN
SPANS 6 AND 7**

Notes:
FB*** = Floor Beam Number

① Core drill longitudinal stiffeners. See repair detail "P" on sheet 18 of 22.

*④ Stringer end repair. See repair detail "G" on sheet 14 of 22.

* Before installing angles, grind stringer end (See Detail on Sheet 10 of 22).

DESIGNED	P.S.J.
CHECKED	V.H.V.
DRAWN	Drew Christopher
CHECKED	P.S.J. V.H.V.

December 6, 2002
EXAMINED *John A. Morris*
PASSED
ENGINEER OF BRIDGES AND STRUCTURES

**FRAMING PLANS
F.A.I. 24 OVER OHIO RIVER
MASSAC COUNTY
S.N. 064-0035**