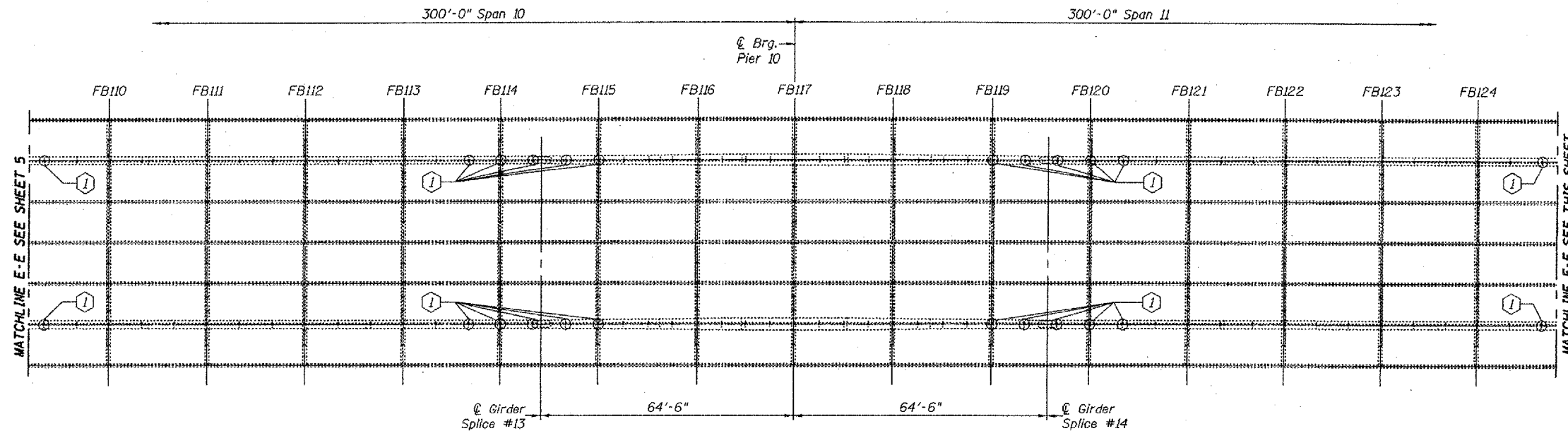


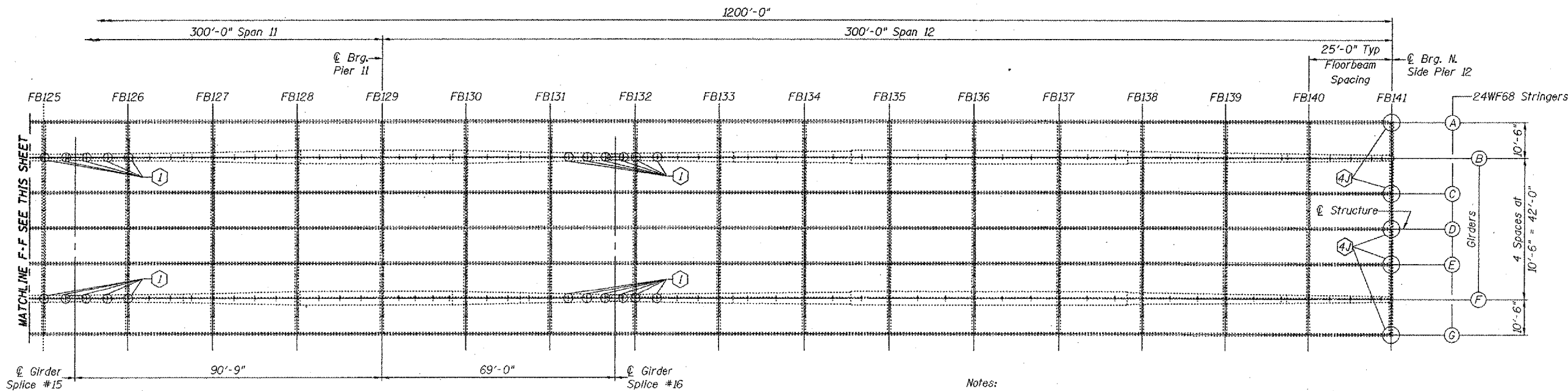
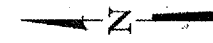
STATE OF ILLINOIS  
DEPARTMENT OF TRANSPORTATION

ROUTE NO.	SECT.
FAI 24	*
FED. ROAD DIST. NO. 7	

CONTRACT: 98990  
ROUTE: INTERSTATE 24  
SECTION: (64-3B) I-6  
COUNTY: MASSAC, IL; McCRACKEN, KY  
SHEET 86 OF 99  
\*64  
FOR INFORMATION ONLY



**PARTIAL FRAMING PLAN  
SPANS 10 AND 11**



**PARTIAL FRAMING PLAN  
SPANS 11 AND 12**

Notes:

FB\*\*\* = Floor Beam Number

① Core drill longitudinal stiffeners. See repair detail "P" on sheet 18 of 22.

\* ④ Stringer end repair. See repair detail "J" on sheet 15 of 22.

\* Before installing angles, grind stringer end (See Detail on Sheet 10 of 22).

DESIGNED	P.S.J.
CHECKED	V.H.V.
DRAWN	Drew Christopher
CHECKED	P.S.J. V.H.V.

December 6, 2002  
EXAMINED *John A. Morris*  
ENGINEER OF STRUCTURAL SERVICES  
PASSED  
ENGINEER OF BRIDGES AND STRUCTURES

**FRAMING PLANS  
F.A.I. 24 OVER OHIO RIVER  
MASSAC COUNTY  
S.N. 064-0035**