

1A

JA033
TOTAL SHEETS = 8

CONSTRUCTION PLANS FOR JACKSONVILLE MUNICIPAL AIRPORT

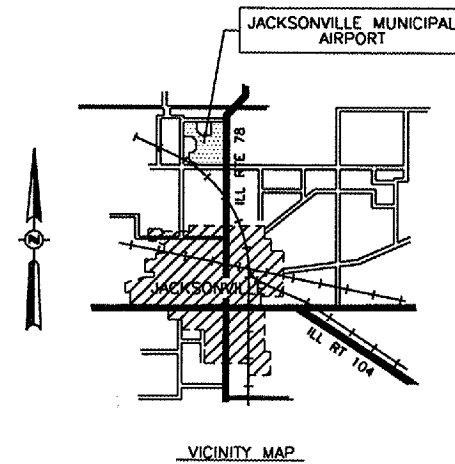
JACKSONVILLE, MORGAN COUNTY, ILLINOIS

REHABILITATE T-HANGAR ACCESS PAVEMENT AND CONSTRUCT STORM SEWER

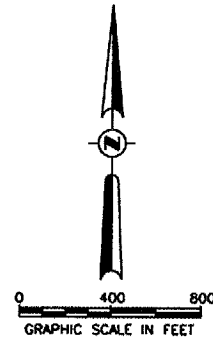
ILLINOIS PROJECT NO. IJX-3714
AIP PROJECT NO. 3-17-0054-B11
DECEMBER 7, 2007

SUMMARY OF QUANTITIES				
ITEM NO.	DESCRIPTION	UNIT	AS BID QUANTITY	AS BUILT QUANTITY
AR152410	UNCLASSIFIED EXCAVATION	CU. YD.	21	
AR152455	EMBANKMENT IN PLACE	CU. YD.	80	
AR208910	REMOVE & REPLACE AGGREGATE BASE	SQ. YD.	37	
AR209510	CRUSHED AGGREGATE BASE COURSE	TON	148	
AR209650	AGGREGATE BASE PREPARATION	SQ. YD.	3,618	
AR401610	BITUMINOUS SURFACE COURSE	TON	624	
AR401901	REMOVE BITUMINOUS SURFACE COURSE	SQ. YD.	3,608	
AR401910	REMOVE & REPLACE BIT. PAVEMENT	SQ. YD.	12	
AR501900	REMOVE PCC PAVEMENT	SQ. YD.	29	
AR501910	REMOVE & REPLACE PCC PAVEMENT	SQ. YD.	154	
AR602510	BITUMINOUS PRIME COAT	GAL.	1,266	
AR603510	BITUMINOUS TACK COAT	GAL.	109	
AR701512	12" RCP, CLASS IV	LIN. FT.	440	
AR701515	15" RCP, CLASS IV	LIN. FT.	192	
AR701518	18" RCP, CLASS IV	LIN. FT.	116	
AR701900	REMOVE PIPE	LIN. FT.	94	
AR751411	INLET - TYPE A	EACH	6	
AR751540	MANHOLE 4'	EACH	3	
AR751943	ADJUST MANHOLE	EACH	1	
AR901510	SEEDING	ACRE	0.3	
AR908510	MULCHING	ACRE	0.3	

INDEX OF SHEETS	
NO.	DESCRIPTION
1	COVER SHEET
2	IMPROVEMENT AND SAFETY PLAN
3	TYPICAL SECTIONS AND STORM SEWER DETAILS
4	STORM SEWER LAYOUT
5	T-HANGAR PAVEMENT ELEVATIONS AND GRADING LAYOUT
6-7	ENTRANCE ROAD SIDE DITCH CROSS SECTIONS
8	STANDARD DRAWINGS



	PLANS PREPARED BY : HUTCHISON ENGINEERING, INC. JACKSONVILLE, ILLINOIS	JACKSONVILLE AIRPORT AUTHORITY
	SUBMITTED <i>[Signature]</i> DATE <u>11/13/07</u>	APPROVED <i>[Signature]</i> CHAIRMAN DATE <u>11-13-07</u>



CONSTRUCTION PROCEDURE NOTES

1. ALL CONTRACTOR EMPLOYEES WILL PARK THEIR PERSONAL VEHICLES IN THE AREA DESIGNATED BY THE AIRPORT MANAGER FOR USE AS A VEHICLE PARKING AREA. THE CONTRACTOR WILL BE RESPONSIBLE FOR TRANSPORTING EMPLOYEES TO THE PROPOSED CONSTRUCTION SITE. ONLY AUTHORIZED CONTRACTOR VEHICLES WILL BE ALLOWED ON THE AIR OPERATIONS AREA OF THE AIRPORT AND ON THE CONSTRUCTION SITE.
2. FLAGS WILL BE REQUIRED ON ALL CONTRACTOR'S VEHICLES AND EQUIPMENT USED ON THE AIRPORT OPERATIONS AREA AND CONSTRUCTION SITE. THE FLAGS SHALL BE THREE (3) FOOT SQUARE CHECKERED FLAGS (INTERNATIONAL ORANGE AND WHITE) DISPLAYED IN FULL VIEW ABOVE THE VEHICLE.
3. THE CONTRACTOR WILL USE THE DESIGNATED HAUL ROUTE AND EQUIPMENT STORAGE AREA SHOWN ON THIS SHEET. IT WILL BE THE CONTRACTOR'S RESPONSIBILITY TO MAINTAIN THE DESIGNATED HAUL ROUTE AND EQUIPMENT STORAGE AREA FOR THE DURATION OF THE PROJECT. ANY DAMAGE TO EXISTING PAVEMENTS USED TO HAUL MATERIAL TO THE CONSTRUCTION SITE WILL BE REPAIRED BY THE CONTRACTOR AT HIS OWN EXPENSE TO THE SATISFACTION OF THE AIRPORT MANAGER AND THE RESIDENT ENGINEER.
4. THE CONTRACTOR SHALL FURNISH, MAINTAIN, AND REMOVE ALL BARRICADES REQUIRED TO DELINEATE THE WORK AREA AND KEEP AIRCRAFT FROM ENCROACHING INTO SAID WORK AREA. THIS REQUIREMENT SHALL BE CONSIDERED INCIDENTAL TO THE CONTRACT AND NO ADDITIONAL COMPENSATION WILL BE ALLOWED.
5. CONSTRUCTION ACTIVITY CONTROL AND OPERATION AREA PROTECTION SHALL BE ACCOMPLISHED IN ACCORDANCE WITH FAA ADVISORY CIRCULAR NO. 150/5370-2E.
6. THE MAXIMUM CONSTRUCTION EQUIPMENT HEIGHT UTILIZED ON THE AIRPORT FOR THIS PROJECT SHALL BE 30'.
7. THIS PROJECT CONSISTS OF WORK TO REHABILITATE T-HANGAR ACCESS PAVEMENT AND CONSTRUCT STORM SEWER.
8. THIS PROJECT WILL DISTURB LESS THAN 1 ACRE OF TURFED LAND.

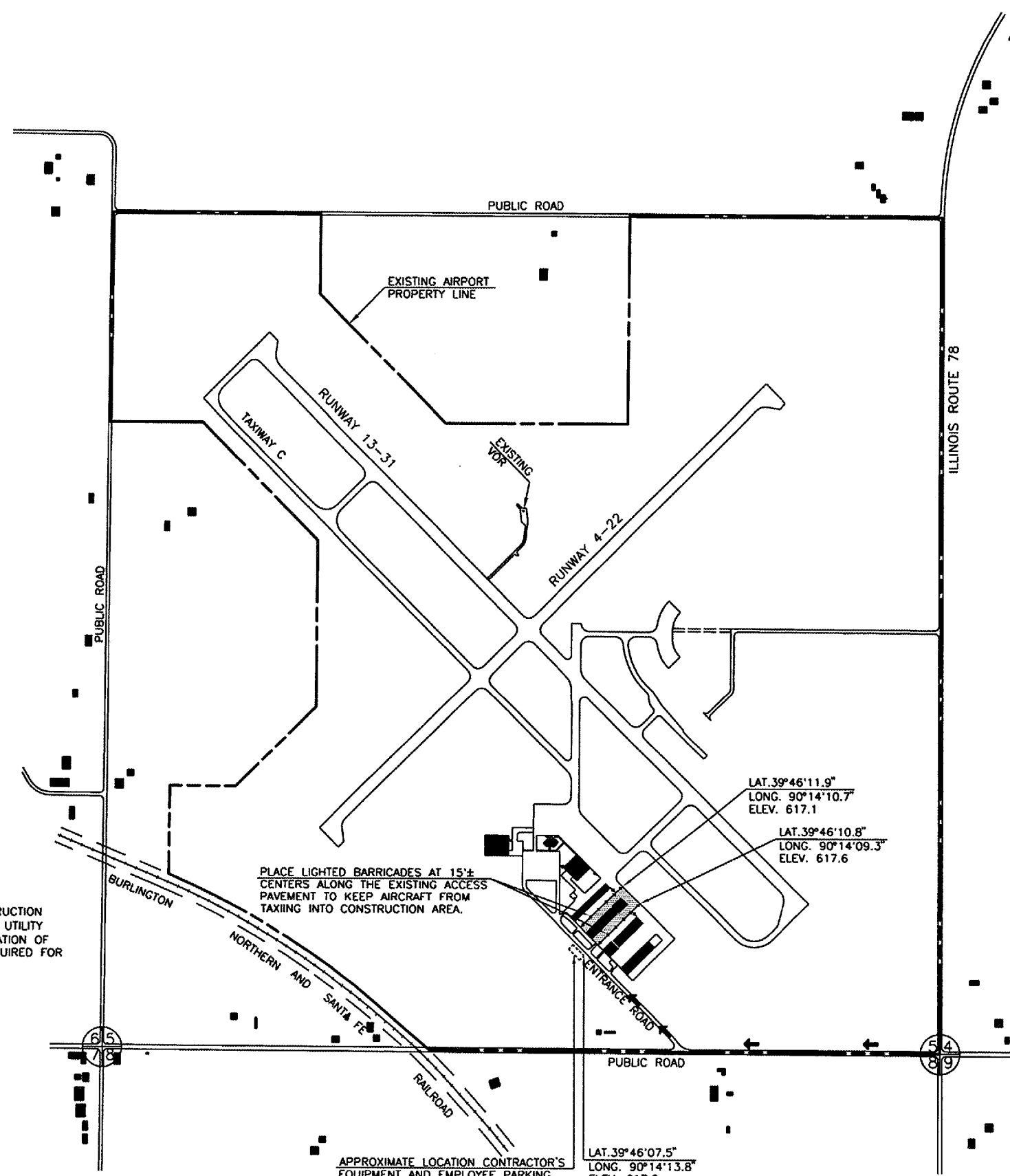
LEGEND

- EXISTING BUILDING
- AIRPORT PROPERTY LINE
- CONTRACTOR'S ACCESS/HAUL ROUTE
- REHABILITATE T-HANGAR ACCESS PAVEMENT
- LOCATION OF LIGHTED BARRICADES

GENERAL NOTE

1. THE CONTRACTOR SHALL BE RESPONSIBLE FOR PROTECTING UTILITY PROPERTY FROM CONSTRUCTION OPERATIONS. PRIOR TO STARTING WORK, THE CONTRACTOR SHALL CONTACT J.U.L.I.E. (JOINT UTILITY LOCATING INFORMATION FOR EXCAVATORS) PHONE: 1-800-892-0123 TO ARRANGE FOR LOCATION OF UTILITIES IN THE WORK AREA. A MINIMUM OF FORTY-EIGHT HOURS ADVANCE NOTICE IS REQUIRED FOR NON-EMERGENCY WORK.

COUNTY - MORGAN
 CITY - JACKSONVILLE
 TOWNSHIP - T. 15 N., R. 10 W.
 SECTION NO. - 5
 ADDRESS - JACKSONVILLE MUNICIPAL AIRPORT
 1956 BALDWIN ROAD
 JACKSONVILLE, ILLINOIS 62650



PLACE LIGHTED BARRICADES AT 15'± CENTERS ALONG THE EXISTING ACCESS PAVEMENT TO KEEP AIRCRAFT FROM TAXIING INTO CONSTRUCTION AREA.

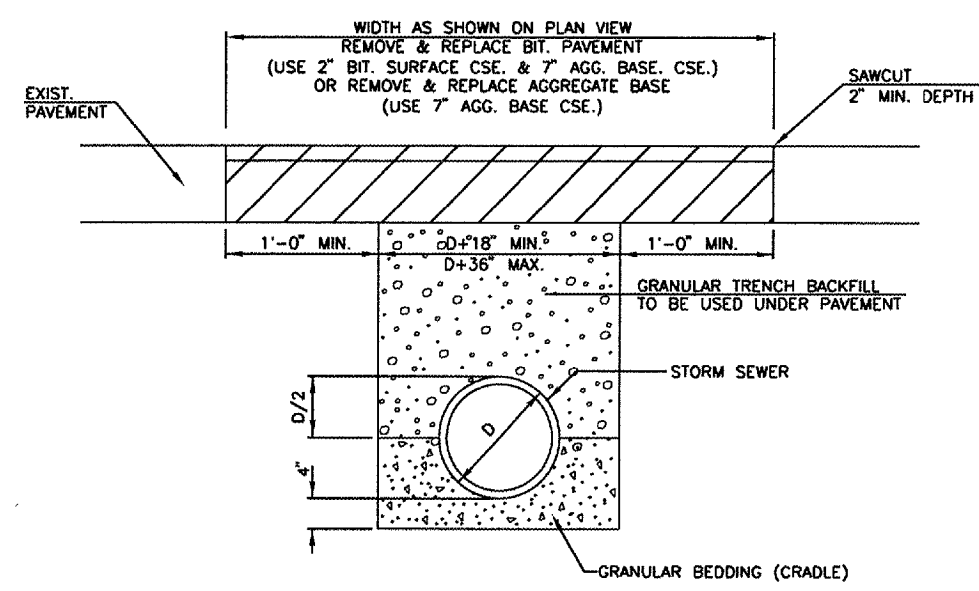
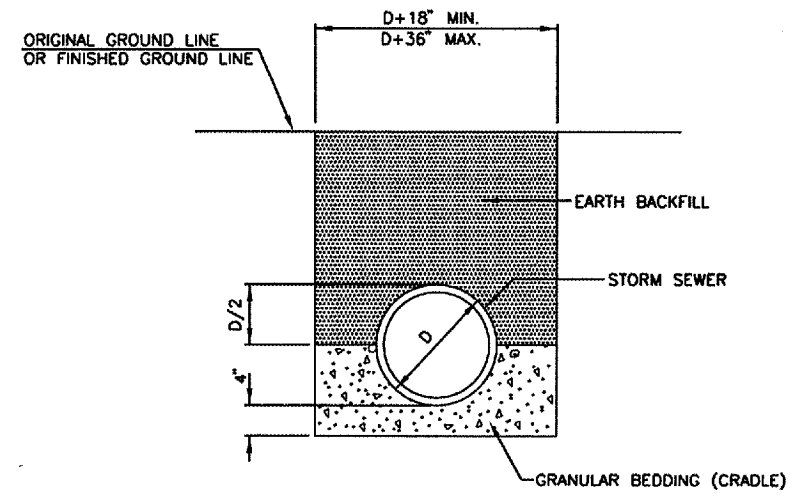
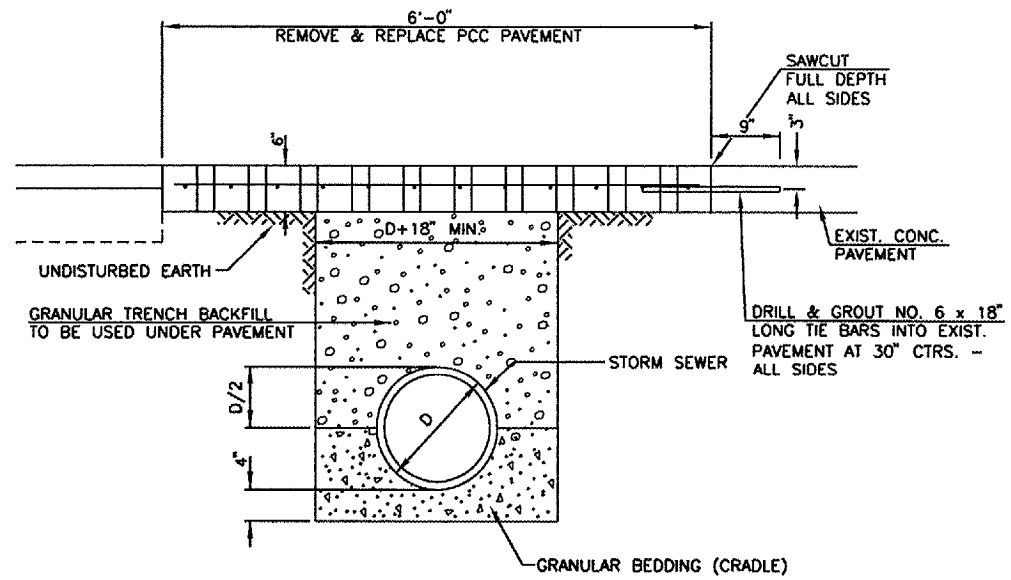
APPROXIMATE LOCATION CONTRACTOR'S EQUIPMENT AND EMPLOYEE PARKING. COORDINATE LOCATION WITH AIRPORT MANAGEMENT.

LAT. 39°46'11.9"
 LONG. 90°14'10.7"
 ELEV. 617.1

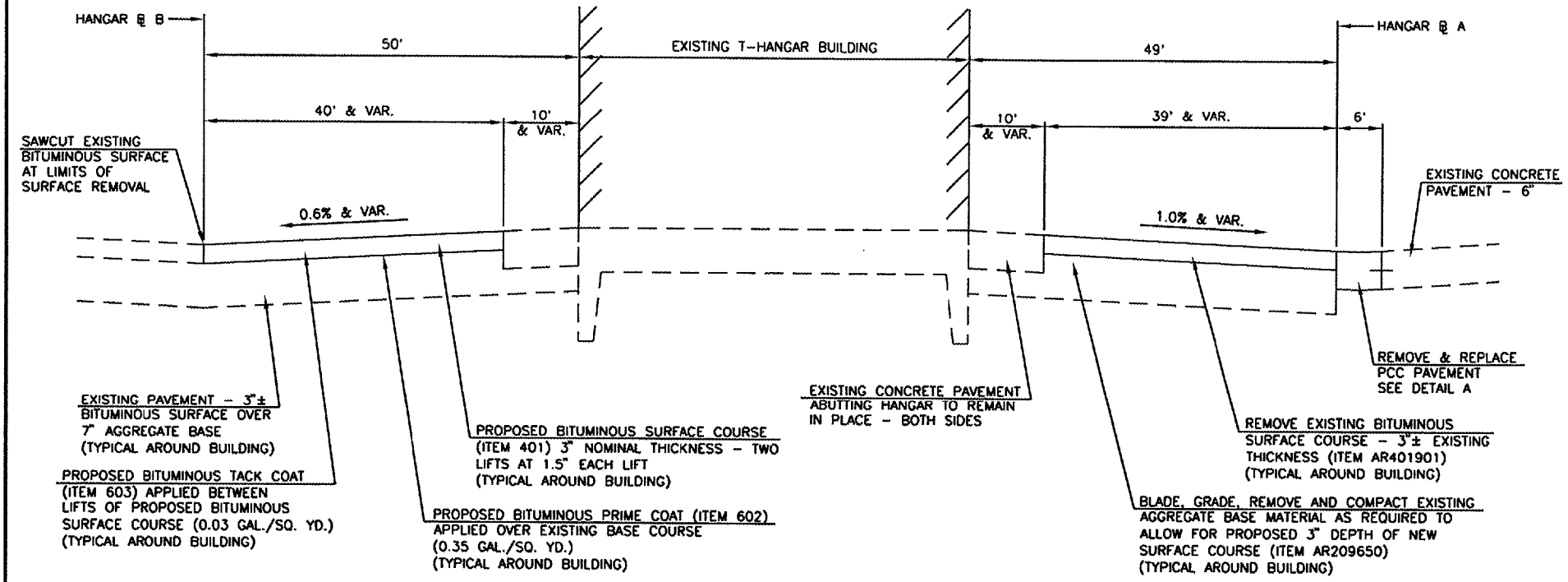
LAT. 39°46'10.8"
 LONG. 90°14'09.3"
 ELEV. 617.6

LAT. 39°46'07.5"
 LONG. 90°14'13.8"
 ELEV. 617.0

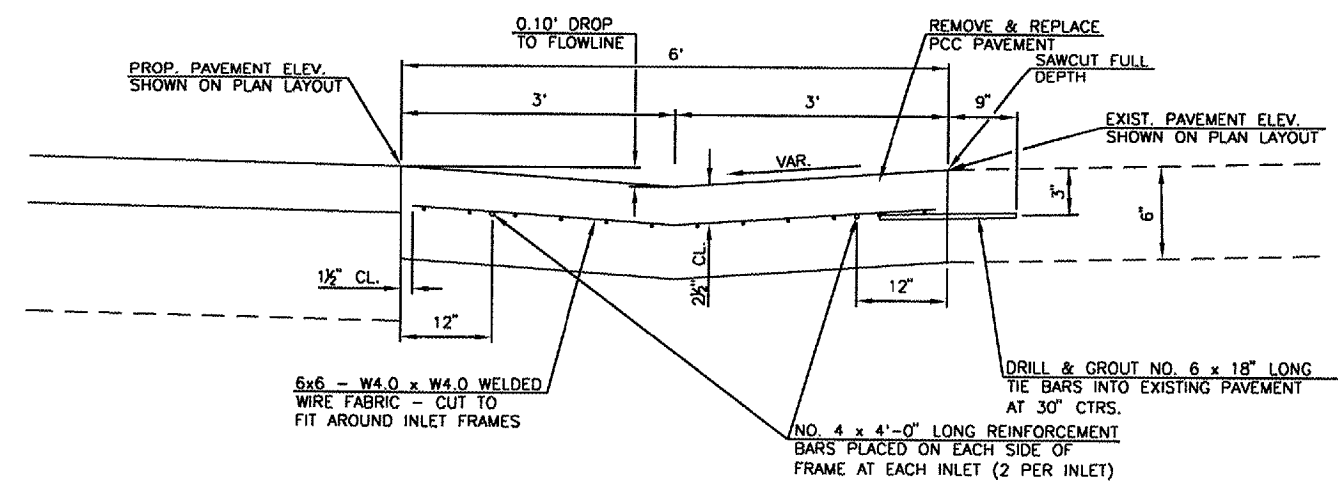
JACKSONVILLE MUNICIPAL AIRPORT JACKSONVILLE, ILLINOIS	
IMPROVEMENT AND SAFETY PLAN	
HUTCHISON ENGINEERING, INC. JACKSONVILLE, ILLINOIS	
DRAWN BY: T.J.D. DATE: NOVEMBER, 2007	ILL. PROJ. NO. UX-3714 AIP PROJ. NO. 3-17-0054-B11



TYPICAL STORM SEWER TRENCH DETAILS



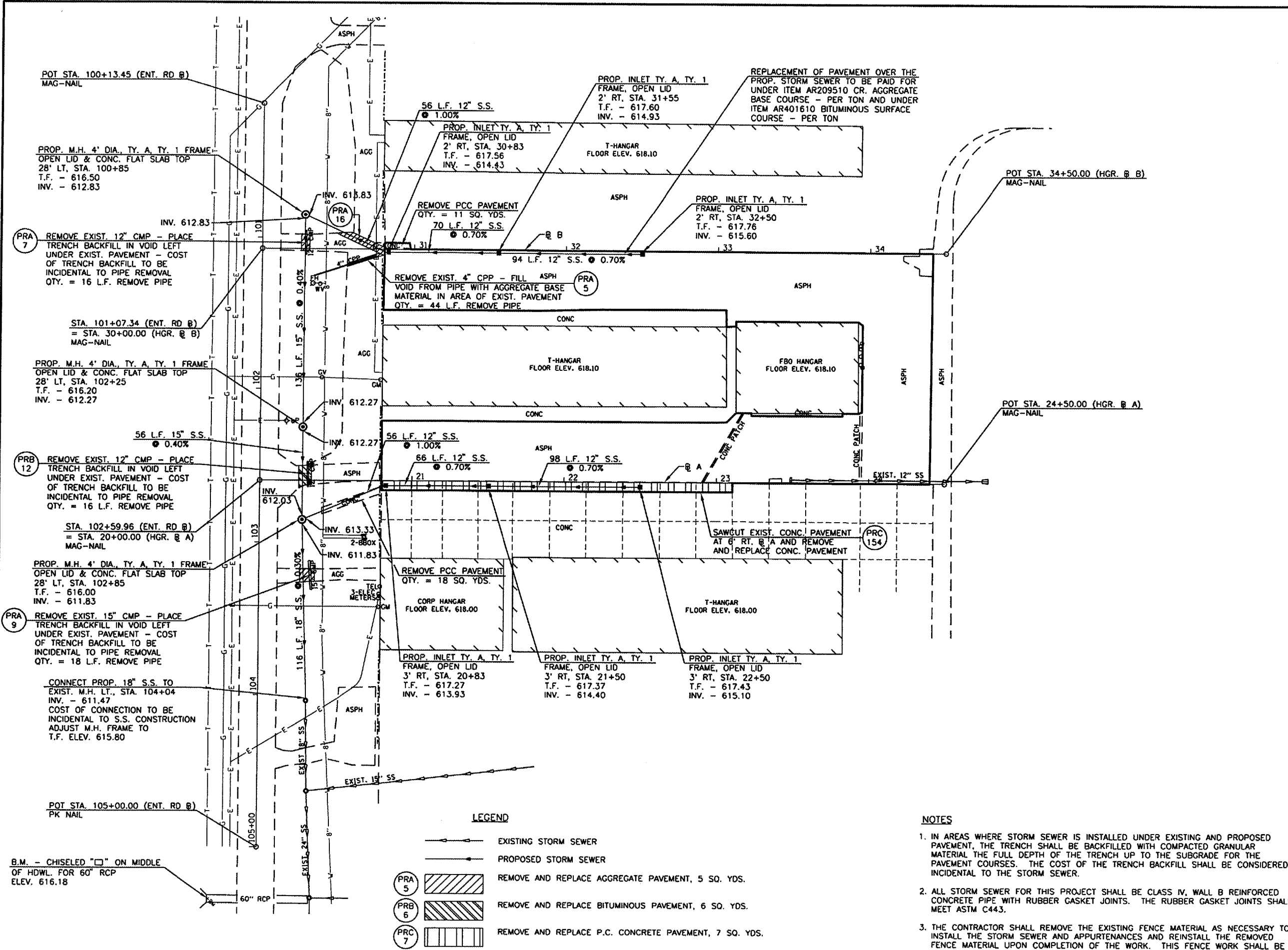
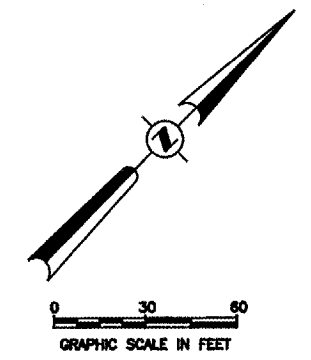
TYPICAL SECTION T-HANGAR ACCESS PAVEMENT



DETAIL A RT. STA. 20+80 TO STA. 23+11

NOTE: EXTEND EXISTING SAWED TRANSVERSE JOINTS THROUGH THE PCC PAVEMENT REPLACEMENT.

JACKSONVILLE MUNICIPAL AIRPORT JACKSONVILLE, ILLINOIS	
TYPICAL SECTION AND STORM SEWER DETAILS	
HUTCHISON ENGINEERING, INC. JACKSONVILLE, ILLINOIS	
DRAWN BY: T.J.D.	ILL. PROJ. NO. IJX-3714
DATE: NOVEMBER, 2007	AMP PROJ. NO. 3-17-0054-B11



POT STA. 100+13.45 (ENT. RD @)
MAG-NAIL

PROP. M.H. 4' DIA., TY. A, TY. 1 FRAME
OPEN LID & CONC. FLAT SLAB TOP
28' LT, STA. 100+85
T.F. - 616.50
INV. - 612.83

PRA 7 REMOVE EXIST. 12" CMP - PLACE
TRENCH BACKFILL IN VOID LEFT
UNDER EXIST. PAVEMENT - COST
OF TRENCH BACKFILL TO BE
INCIDENTAL TO PIPE REMOVAL
QTY. = 16 L.F. REMOVE PIPE

STA. 101+07.34 (ENT. RD @)
= STA. 30+00.00 (HGR. @ B)
MAG-NAIL

PROP. M.H. 4' DIA., TY. A, TY. 1 FRAME
OPEN LID & CONC. FLAT SLAB TOP
28' LT, STA. 102+25
T.F. - 616.20
INV. - 612.27

PRB 12 REMOVE EXIST. 12" CMP - PLACE
TRENCH BACKFILL IN VOID LEFT
UNDER EXIST. PAVEMENT - COST
OF TRENCH BACKFILL TO BE
INCIDENTAL TO PIPE REMOVAL
QTY. = 16 L.F. REMOVE PIPE

STA. 102+59.96 (ENT. RD @)
= STA. 20+00.00 (HGR. @ A)
MAG-NAIL

PROP. M.H. 4' DIA., TY. A, TY. 1 FRAME
OPEN LID & CONC. FLAT SLAB TOP
28' LT, STA. 102+85
T.F. - 616.00
INV. - 611.83

PRA 9 REMOVE EXIST. 15" CMP - PLACE
TRENCH BACKFILL IN VOID LEFT
UNDER EXIST. PAVEMENT - COST
OF TRENCH BACKFILL TO BE
INCIDENTAL TO PIPE REMOVAL
QTY. = 18 L.F. REMOVE PIPE

CONNECT PROP. 18" S.S. TO
EXIST. M.H. LT., STA. 104+04
INV. - 611.47
COST OF CONNECTION TO BE
INCIDENTAL TO S.S. CONSTRUCTION
ADJUST M.H. FRAME TO
T.F. ELEV. 615.80

POT STA. 105+00.00 (ENT. RD @)
PK NAIL

B.M. - CHISELED "□" ON MIDDLE
OF HOWL. FOR 60" RCP
ELEV. 616.18

LEGEND

- EXISTING STORM SEWER
- PROPOSED STORM SEWER
- REMOVE AND REPLACE AGGREGATE PAVEMENT, 5 SQ. YDS.
- REMOVE AND REPLACE BITUMINOUS PAVEMENT, 6 SQ. YDS.
- REMOVE AND REPLACE P.C. CONCRETE PAVEMENT, 7 SQ. YDS.

NOTES

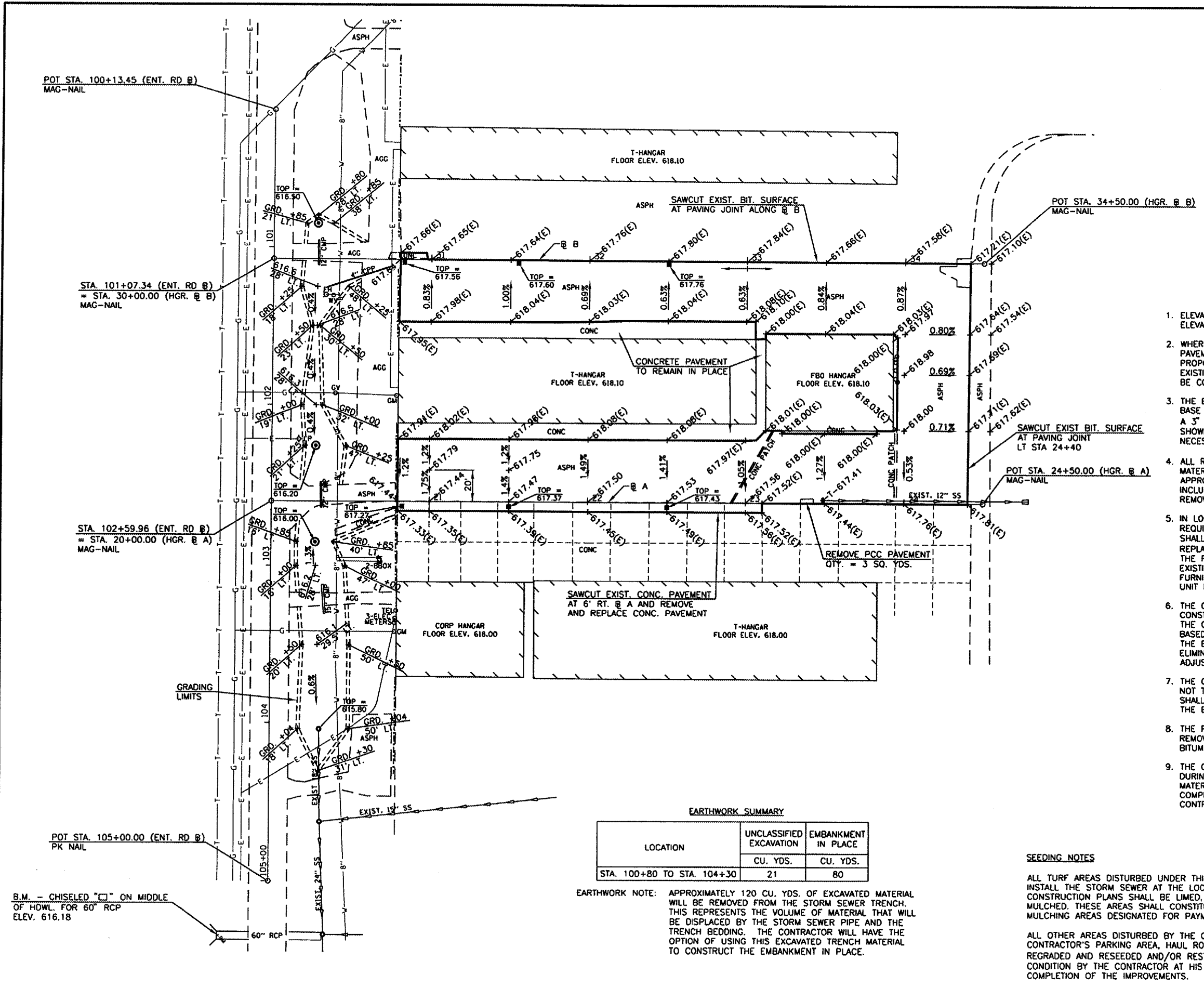
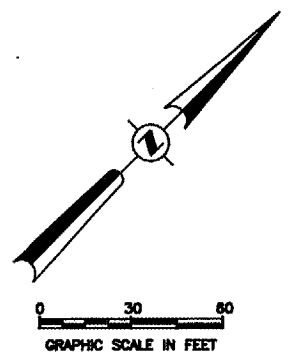
1. IN AREAS WHERE STORM SEWER IS INSTALLED UNDER EXISTING AND PROPOSED PAVEMENT, THE TRENCH SHALL BE BACKFILLED WITH COMPACTED GRANULAR MATERIAL THE FULL DEPTH OF THE TRENCH UP TO THE SUBGRADE FOR THE PAVEMENT COURSES. THE COST OF THE TRENCH BACKFILL SHALL BE CONSIDERED INCIDENTAL TO THE STORM SEWER.
2. ALL STORM SEWER FOR THIS PROJECT SHALL BE CLASS IV, WALL B REINFORCED CONCRETE PIPE WITH RUBBER GASKET JOINTS. THE RUBBER GASKET JOINTS SHALL MEET ASTM C443.
3. THE CONTRACTOR SHALL REMOVE THE EXISTING FENCE MATERIAL AS NECESSARY TO INSTALL THE STORM SEWER AND APPURTENANCES AND REINSTALL THE REMOVED FENCE MATERIAL UPON COMPLETION OF THE WORK. THIS FENCE WORK SHALL BE CONSIDERED INCIDENTAL TO THE CONTRACT.

JACKSONVILLE MUNICIPAL AIRPORT
JACKSONVILLE, ILLINOIS

STORM SEWER LAYOUT

HUTCHISON ENGINEERING, INC.
JACKSONVILLE, ILLINOIS

DRAWN BY: T.J.D. ILL. PROJ. NO. LX-3714
DATE: NOVEMBER, 2007 MP PROJ. NO. 3-17-0054-B1



GENERAL NOTES

1. ELEVATIONS SHOWN ARE TOP OF FINISHED SURFACE ELEVATIONS. (E) SHOWN AFTER AN ELEVATION DENOTES AN EXISTING ELEVATION.
2. WHERE PROPOSED BITUMINOUS SURFACE ABUTS EXISTING PAVEMENT, THE EXISTING PAVEMENT SHALL BE CUT TO PRODUCE A STRAIGHT VERTICAL FACE TO ABUT THE PROPOSED SURFACE TO. PRIOR TO SURFACING, THE VERTICAL FACES OF ALL ABUTTING EXISTING PAVEMENT SHALL BE PAINTED WITH LIQUID ASPHALT. COST OF THIS WORK SHALL BE CONSIDERED INCIDENTAL TO THE CONTRACT.
3. THE EXISTING BITUMINOUS SURFACE SHALL BE REMOVED AND THE EXISTING AGGREGATE BASE SHALL BE BLADED AND SHAPED AS REQUIRED TO PROVIDE FOR THE APPLICATION OF A 3" THICKNESS OF PROPOSED BITUMINOUS SURFACE TO THE FINISHED ELEVATIONS SHOWN. THE COST OF REMOVAL OF THE EXISTING AGGREGATE BASE MATERIAL, WHERE NECESSARY, SHALL BE CONSIDERED INCIDENTAL TO AGGREGATE BASE PREPARATION.
4. ALL REMOVED BITUMINOUS SURFACE MATERIAL AND BLADED/REMOVED AGGREGATE BASE MATERIAL SHALL BE DISPOSED OF BY THE CONTRACTOR OFF THE AIRPORT SITE AT AN APPROVED SITE PROVIDED BY THE CONTRACTOR. THE COST OF THIS DISPOSAL SHALL BE INCLUDED IN THE COST OF THE AGGREGATE BASE PREPARATION AND THE COST TO REMOVE BITUMINOUS SURFACE COURSE.
5. IN LOCATIONS WHERE UNSTABLE EXISTING AGGREGATE BASE COURSE IS ENCOUNTERED REQUIRING REPAIR OF THE BASE, THE AREAS DESIGNATED BY THE RESIDENT ENGINEER SHALL BE EXCAVATED AND THE REMOVED MATERIAL DISPOSED OF. THE AREAS SHALL BE REPLACED WITH A SEVEN (7) INCH DEPTH OF NEW AGGREGATE BASE MATERIAL MEETING THE REQUIREMENTS OF ITEM 209. THE COST OF THE REMOVAL AND DISPOSAL OF THE EXISTING BASE SHALL BE CONSIDERED INCIDENTAL TO AGGREGATE BASE PREPARATION. FURNISHING, PLACING AND COMPACTING NEW BASE MATERIAL SHALL BE PAID FOR AT THE UNIT PRICE BID FOR CRUSHED AGGREGATE BASE COURSE.
6. THE QUANTITY FOR CRUSHED AGGREGATE BASE COURSE THAT IS INCLUDED IN THESE CONSTRUCTION PLANS IS ESTIMATED IN ORDER TO ESTABLISH A WORK ITEM BID PRICE. THE QUANTITY WILL BE ADJUSTED BY THE RESIDENT ENGINEER DURING CONSTRUCTION BASED UPON FIELD INSPECTION AND IDENTIFICATION OF LOCATIONS REQUIRING REPAIR OF THE EXISTING AGGREGATE BASE. THE RIGHT IS RESERVED TO INCREASE, DECREASE OR ELIMINATE THE QUANTITY FOR CRUSHED AGGREGATE BASE COURSE WITH NO UNIT PRICE ADJUSTMENT FOR THE ALTERED CONTRACT ITEM BEING ALLOWED.
7. THE CONTRACTOR SHALL EXERCISE CAUTION DURING CONSTRUCTION OPERATIONS SO AS NOT TO DAMAGE THE EXISTING HANGAR BUILDINGS. ANY DAMAGE TO THE BUILDINGS SHALL BE REPAIRED BY THE CONTRACTOR AT HIS OWN EXPENSE TO THE SATISFACTION OF THE ENGINEER AND THE AIRPORT MANAGER.
8. THE REMOVAL OF CONCRETE PATCHES IN CONJUNCTION WITH THE BITUMINOUS SURFACE REMOVAL SHALL BE MEASURED AS AND PAID FOR UNDER ITEM AR401901 REMOVE BITUMINOUS SURFACE COURSE.
9. THE CONTRACTOR SHALL, AT HIS OPTION, EITHER WORK AROUND THE EXISTING FENCE DURING HIS PAVEMENT CONSTRUCTION OPERATIONS OR REMOVE THE EXISTING FENCE MATERIAL AS NECESSARY AND REINSTALL THE REMOVED FENCE MATERIAL AT THE COMPLETION OF WORK. THIS FENCE WORK SHALL BE CONSIDERED INCIDENTAL TO THE CONTRACT.

EARTHWORK SUMMARY

LOCATION	UNCLASSIFIED EXCAVATION	EMBANKMENT IN PLACE
	CU. YDS.	CU. YDS.
STA. 100+80 TO STA. 104+30	21	80

EARTHWORK NOTE: APPROXIMATELY 120 CU. YDS. OF EXCAVATED MATERIAL WILL BE REMOVED FROM THE STORM SEWER TRENCH. THIS REPRESENTS THE VOLUME OF MATERIAL THAT WILL BE DISPLACED BY THE STORM SEWER PIPE AND THE TRENCH BEDDING. THE CONTRACTOR WILL HAVE THE OPTION OF USING THIS EXCAVATED TRENCH MATERIAL TO CONSTRUCT THE EMBANKMENT IN PLACE.

SEEDING NOTES

ALL TURF AREAS DISTURBED UNDER THIS CONSTRUCTION PROJECT TO INSTALL THE STORM SEWER AT THE LOCATIONS SHOWN IN THESE CONSTRUCTION PLANS SHALL BE LIMED, FERTILIZED, SEEDED AND MULCHED. THESE AREAS SHALL CONSTITUTE THE SEEDING AND MULCHING AREAS DESIGNATED FOR PAYMENT.

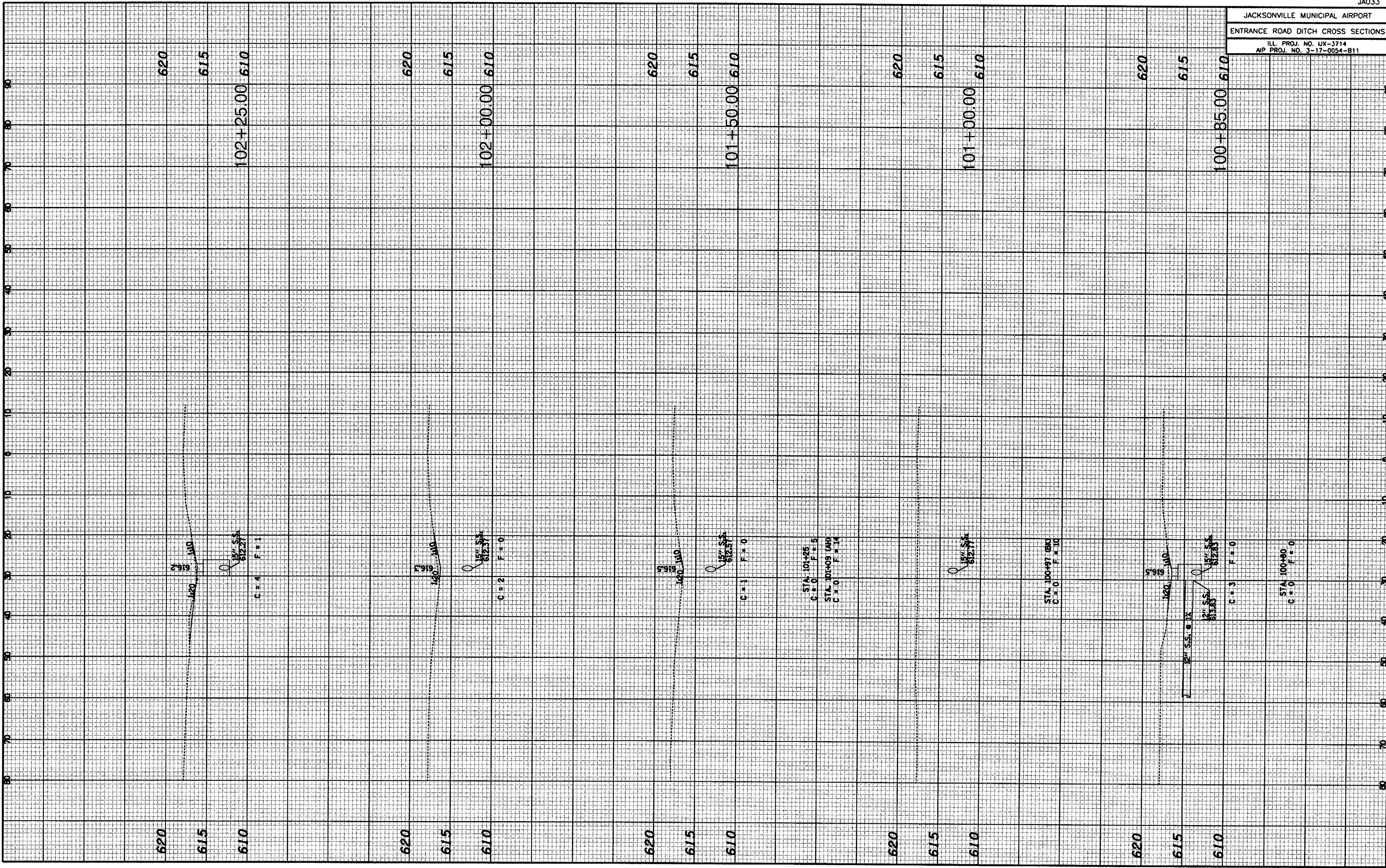
ALL OTHER AREAS DISTURBED BY THE CONTRACTOR INCLUDING THE CONTRACTOR'S PARKING AREA, HAUL ROUTES, ETC. SHALL BE REGRADED AND RESEEDED AND/OR RESTORED TO THEIR ORIGINAL CONDITION BY THE CONTRACTOR AT HIS OWN EXPENSE UPON COMPLETION OF THE IMPROVEMENTS.

A QUANTITY OF 0.3 AC. CONSTITUTES THE AREA FOR PAYMENT.

B.M. - CHISELED "C" ON MIDDLE OF HOWL. FOR 60" RCP ELEV. 616.18

JACKSONVILLE MUNICIPAL AIRPORT JACKSONVILLE, ILLINOIS	
T-HANGAR PAVEMENT ELEVATIONS AND GRADING LAYOUT	
HUTCHISON ENGINEERING, INC. JACKSONVILLE, ILLINOIS	
DRAWN BY: T.J.D.	ILL. PROJ. NO. 40X-3714
DATE: NOVEMBER, 2007	APP PROJ. NO. 3-17-0054-B11

JACKSONVILLE MUNICIPAL AIRPORT
 ENTRANCE ROAD DITCH CROSS SECTIONS
 ILL. PROJ. NO. LX-3714
 AIP PROJ. NO. 3-17-0054-811



JACKSONVILLE MUNICIPAL AIRPORT
 ENTRANCE ROAD DITCH CROSS SECTIONS
 ILL. PROJ. NO. LX-3714
 AIP PROJ. NO. 3-17-0054-B11

