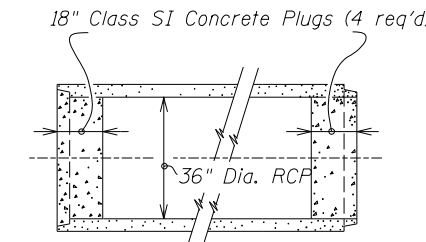


*Transition from 6:1 at this location to 4:1 at the culvert.

Field tile observation wells and segments of the field tile intercepted by the proposed ditch shall be removed and disposed of. See Field Tile Details, sheet 18.

Proposed Ditch Curve A1
 PI Sta. 18+15.33
 $\Delta = 15^\circ 52' 41''$ (RT)
 $D = 2^\circ 04' 33''$
 $T = 384.91'$
 $R = 2,760.08'$
 $L = 764.89'$
 $E = 26.71'$
 PC Sta. 14+30.42
 PT Sta. 21+95.31



T.B.M. #1 Chis. D on W. end of S. Headwall of box culvert under Rte. 125, 500'+/- W. of Rte. 123
Elevation 636.62

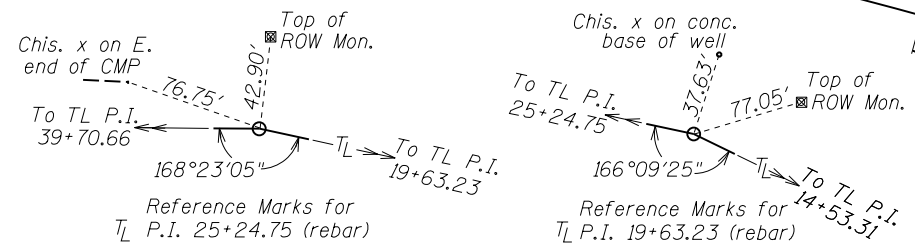
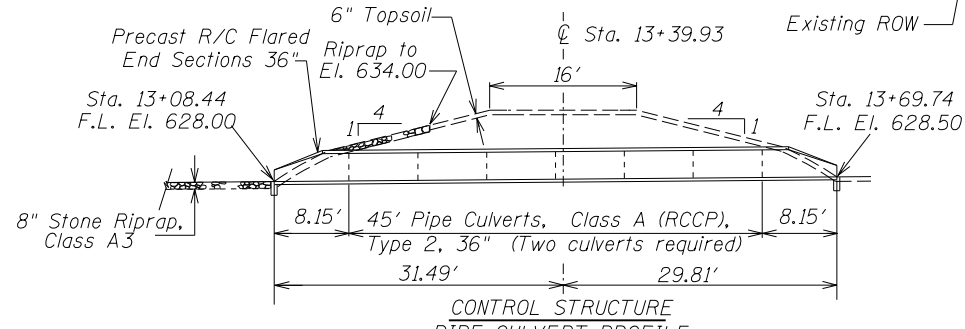
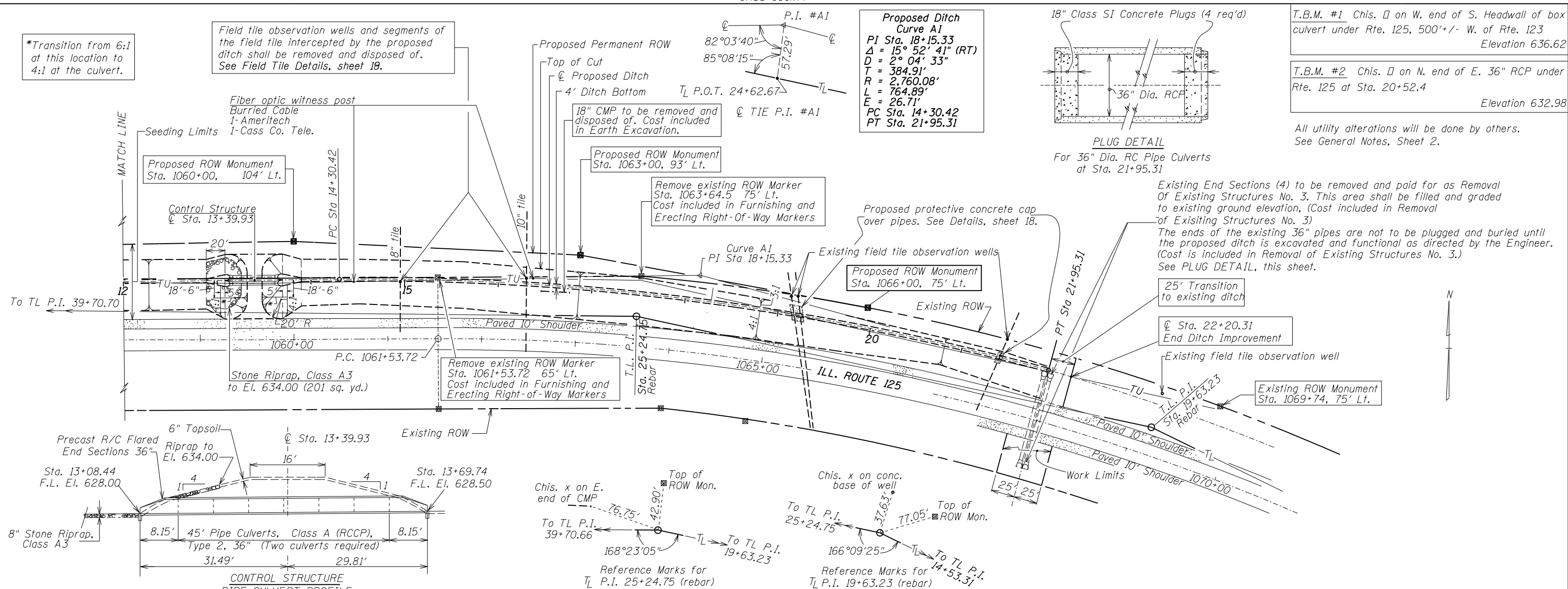
T.B.M. #2 Chis. D on N. end of E. 36" RCP under Rte. 125 at Sta. 20+52.4
Elevation 632.98

All utility alterations will be done by others. See General Notes, Sheet 2.

PLUG DETAIL
 For 36" Dia. RC Pipe Culverts at Sta. 21+95.31

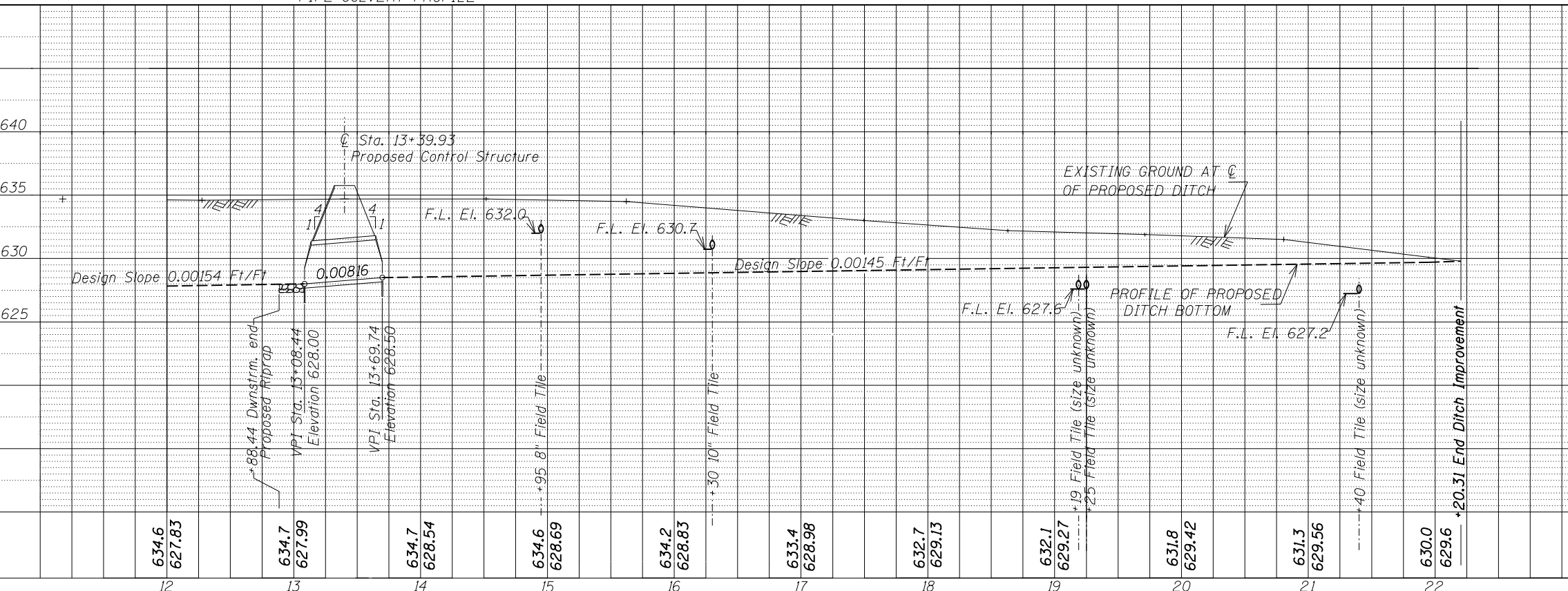
Existing End Sections (4) to be removed and paid for as Removal Of Existing Structures No. 3. This area shall be filled and graded to existing ground elevation. (Cost included in Removal of Existing Structures No. 3)

The ends of the existing 36" pipes are not to be plugged and buried until the proposed ditch is excavated and functional as directed by the Engineer. (Cost is included in Removal of Existing Structures No. 3.) See PLUG DETAIL, this sheet.



BILL OF MATERIAL

ITEM	UNIT	QUANTITY	REMARKS
EARTH EXCAVATION	CU YD	3,465	
SEEDING, MULCHING AND FERTILIZING	ACRE	1.58	
STONE RIPRAP, CLASS A3	SQ YD	201	
PIPE CULVERTS, CLASS A (RCCP), TYPE 2, 36"	FOOT	90	
REMOVAL OF EXISTING STRUCTURES NO. 3 EACH		4	
PRECAST REINFORCED CONCRETE FLARED END SECTIONS 36"	EACH	4	
FURNISHING AND ERECTING RIGHT-OF-WAY MARKERS	EACH	3	
TOPSOIL EXCAVATION AND PLACEMENT	CU YD	986	
TEMPORARY EROSION CONTROL SEEDING	POUND	158	



C:\OwProj\Imp\Projects\ASHLAND\Plan Sheets\sheet 6.dgn
 5:16:49 PM
 12/19/2012
 Checked by: GMS
 Drawn by: S. N. March 5, 97