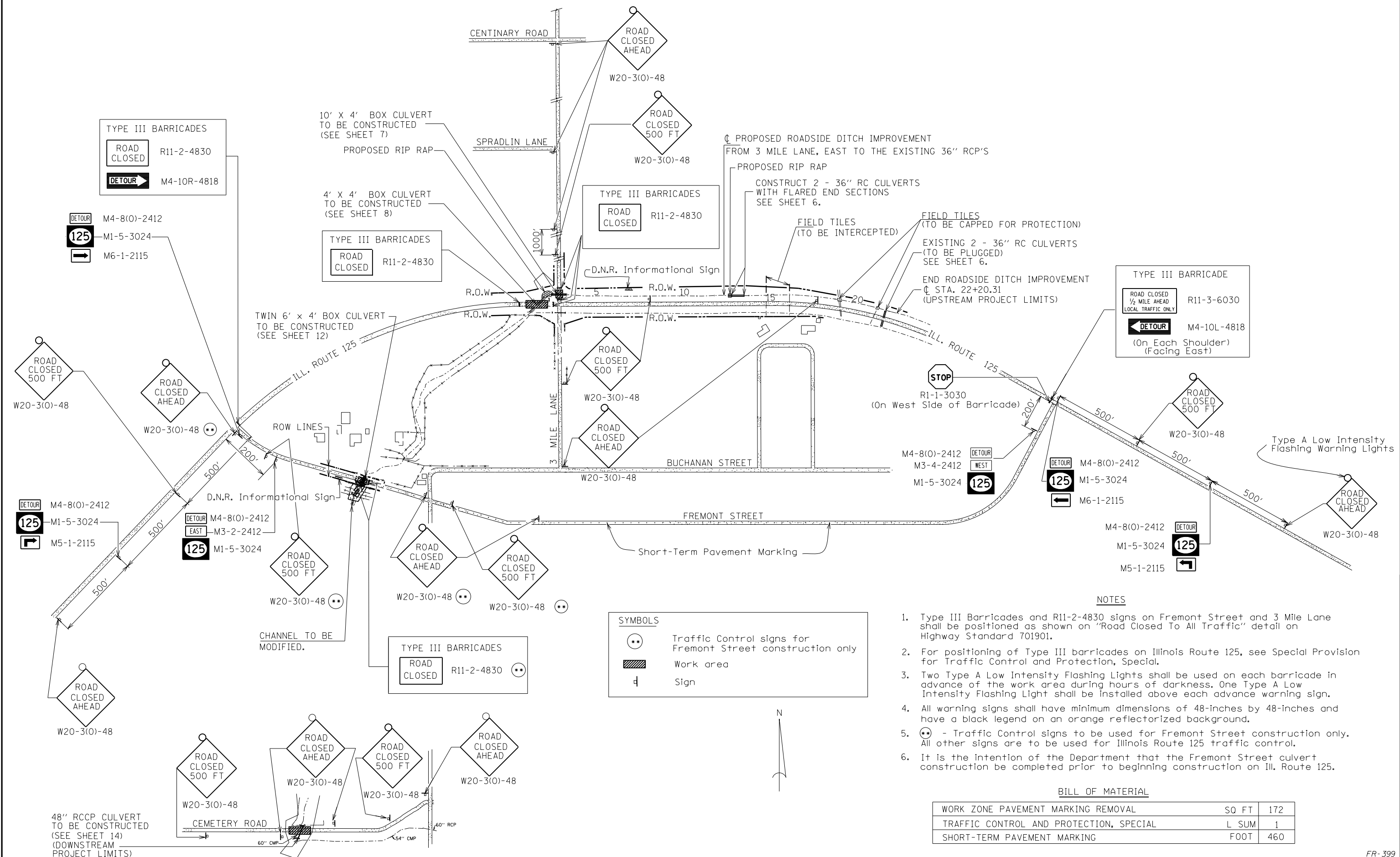


O:\OwrProj\mpl\Projects\ASHLAND\Plan Sheets\sheet 9.dgn
 12/4/2012 3:52:14 PM
 Designed By Checked By TMM
 Drawn By S/W checked By RLP



SYMBOLS

- ⊙ Traffic Control signs for Fremont Street construction only
- ▨ Work area
- ⌵ Sign

- NOTES**
1. Type III Barricades and R11-2-4830 signs on Fremont Street and 3 Mile Lane shall be positioned as shown on "Road Closed To All Traffic" detail on Highway Standard 701901.
 2. For positioning of Type III barricades on Illinois Route 125, see Special Provision for Traffic Control and Protection, Special.
 3. Two Type A Low Intensity Flashing Lights shall be used on each barricade in advance of the work area during hours of darkness. One Type A Low Intensity Flashing Light shall be installed above each advance warning sign.
 4. All warning signs shall have minimum dimensions of 48-inches by 48-inches and have a black legend on an orange reflectorized background.
 5. ⊙ - Traffic Control signs to be used for Fremont Street construction only. All other signs are to be used for Illinois Route 125 traffic control.
 6. It is the intention of the Department that the Fremont Street culvert construction be completed prior to beginning construction on Ill. Route 125.

BILL OF MATERIAL

ITEM	UNIT	QUANTITY
WORK ZONE PAVEMENT MARKING REMOVAL	SQ FT	172
TRAFFIC CONTROL AND PROTECTION, SPECIAL	L SUM	1
SHORT-TERM PAVEMENT MARKING	FOOT	460