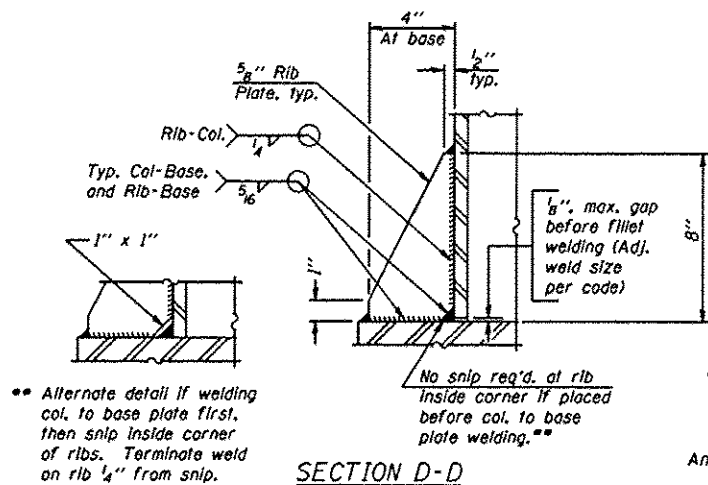
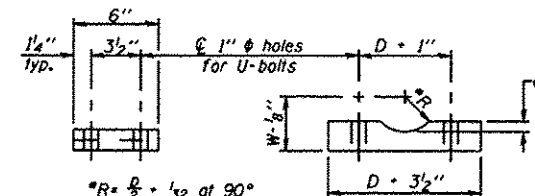


SECTION B-B



SECTION D-D

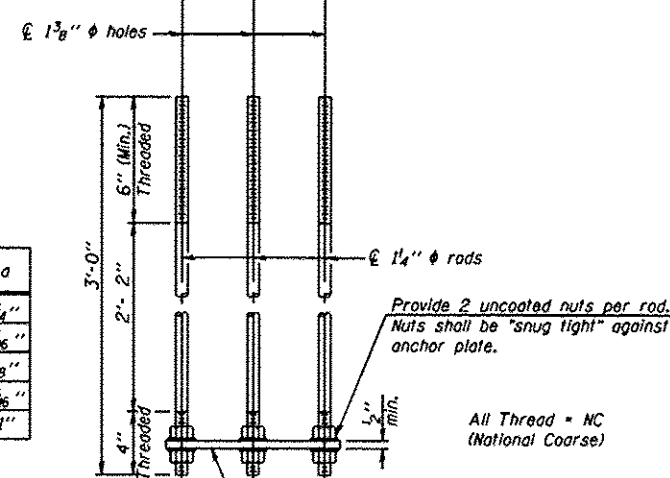
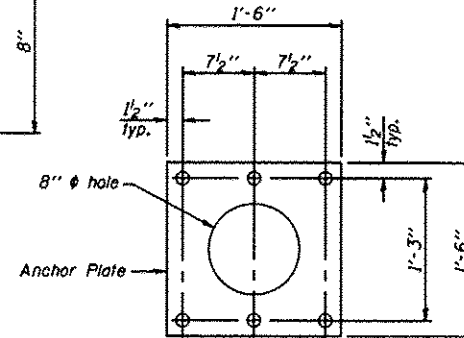
•• Alternate detail if welding col. to base plate first, then snip inside corner of ribs. Terminate weld on rib 1/4" from snip.



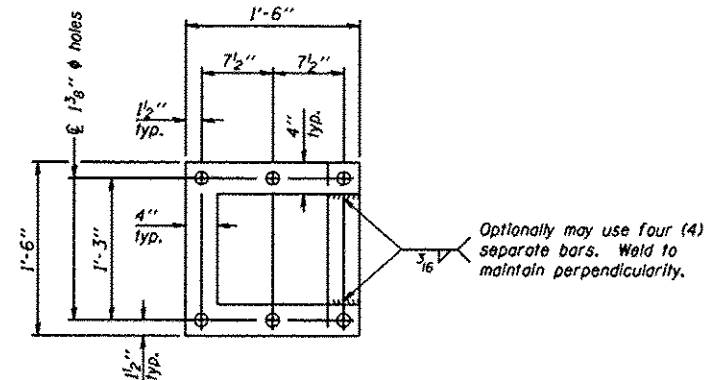
SADDLE SHIM DETAIL

ASTM B26 Alloy 356-F
or
ASTM B209 Alloy 6061-T651
(4 required per sign truss)

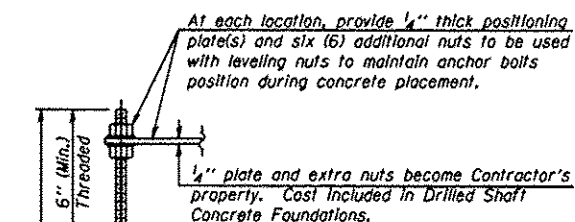
Truss Chord Nominal Dia.	a
5"	3/4"
5 1/2"	13/16"
6"	7/8"
6 1/2"	15/16"
7"	1"



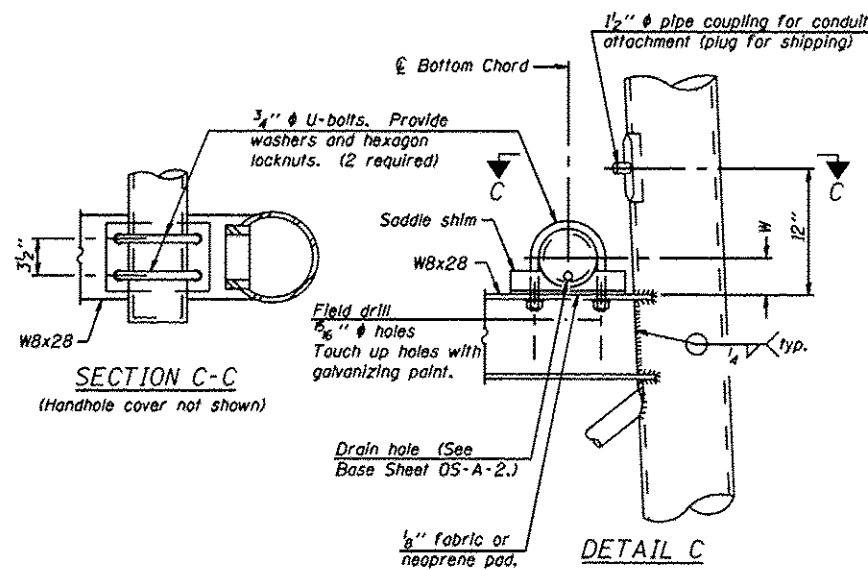
ANCHOR ROD DETAIL
Spread Footing Foundation



POSITIONING PLATE(S)



ANCHOR ROD DETAIL
Drilled Shaft Foundation



SECTION C-C
(Handhole cover not shown)

DETAIL C

10" PIPE SUPPORT FRAME DETAILS

Anchor rods shall conform to ASTM F1554 Grade 105. Galvanize upper 12" minimum per AASHTO M232. No welding shall be permitted on rods.

OS-A-6A

1-20-11

FILE NAME	USER NAME	DESIGNED	REVISED	STATE OF ILLINOIS DEPARTMENT OF TRANSPORTATION				OVERHEAD SIGN STRUCTURES				F.A. RTE.	SECTION	COUNTY	TOTAL SHEETS	SHEET NO.				
OS-A-6A	MUSERS			STATE OF ILLINOIS DEPARTMENT OF TRANSPORTATION				SUPPORT FRAME DETAILS - ALUMINUM TRUSS				VAR	0-6_0VDSINSIBBEL12-23	VARIOUS	32	15				
FILE#		DRAWN	REVISED														SCALE:	SHEET NO. OF SHEETS	STA. TO STA.	ILLINOIS FED. AID PROJECT
		CHECKED	REVISED														CONTRACT NO. 46226			
		DATE	REVISED																	