

**LEGEND**

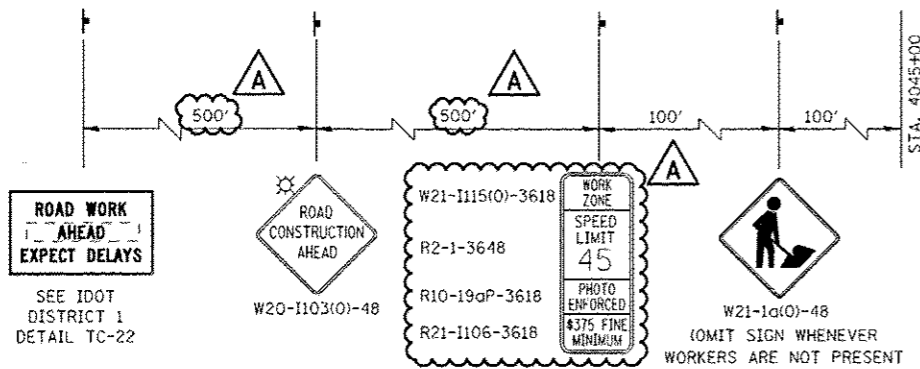
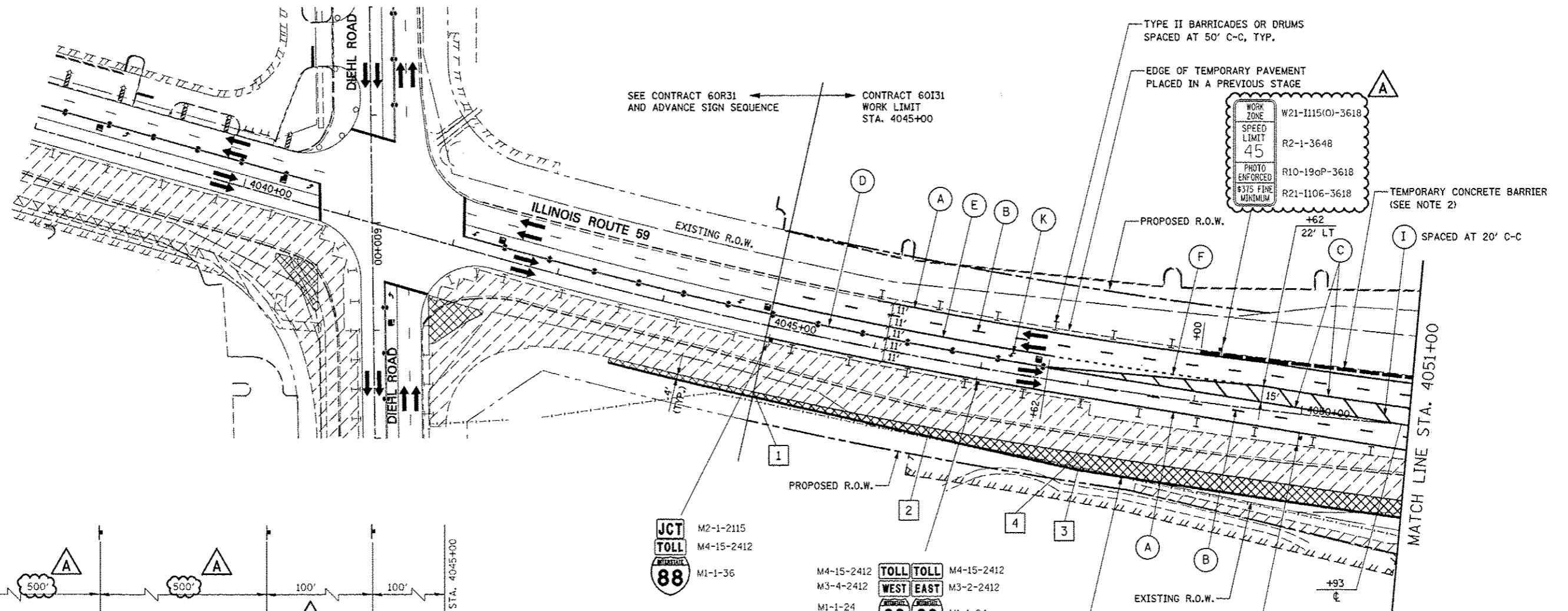
- CONSTRUCTION WORK ZONE
- TEMPORARY PAVEMENT PLACED IN THIS STAGE
- DIRECTION OF TRAFFIC
- TYPE II BARRICADE OR DRUM WITH STEADY BURNING LIGHT
- CHANNELIZATION DRUM WITH STEADY BURNING LIGHT
- TEMPORARY CONCRETE BARRIER
- VERTICAL PANEL WITH STEADY BURNING LIGHT
- SIGN
- TYPE III BARRICADE LOCATION
- FLASHING YELLOW LIGHT

**TEMPORARY PAVEMENT DATA**

STATION	OFFSET
1	4045+00 63' RT
2	4046+64 63' RT
3	4048+04 78' RT
4	4048+04 63' RT

**MOT PAVEMENT MARKING LEGEND**

- (A) TEMPORARY PAVEMENT MARKING - LINE 4", SOLID WHITE
- (B) TEMPORARY PAVEMENT MARKING - LINE 4", WHITE SKIP-DASH (10' LINE - 30' SPACE)
- (C) TEMPORARY PAVEMENT MARKING - LINE 4", SOLID YELLOW
- (D) TEMPORARY PAVEMENT MARKING - LINE 4", DOUBLE YELLOW SPACED AT 11" C-C WITH TEMPORARY RAISED REFLECTIVE PAVEMENT MARKERS SPACED 40' C-C (BI-DIRECTIONAL AMBER)
- (E) TEMPORARY PAVEMENT MARKING - LINE 6", SOLID WHITE
- (F) TEMPORARY PAVEMENT MARKING - LINE 6", WHITE DOTTED (2' LINE - 6' SPACE) (UNLESS OTHERWISE NOTED)
- (G) TEMPORARY PAVEMENT MARKING - LINE 8", SOLID WHITE
- (H) TEMPORARY PAVEMENT MARKING - LINE 12", SOLID WHITE
- (I) TEMPORARY PAVEMENT MARKING - LINE 12", SOLID YELLOW
- (J) TEMPORARY PAVEMENT MARKING - LINE 24", SOLID WHITE
- (K) TEMPORARY PAVEMENT MARKING, LETTERS & SYMBOLS



**ADVANCE SIGNING FOR NORTHBOUND IL ROUTE 59**

(SPACING MAY VARY DUE TO FIELD CONDITIONS)  
COORDINATE WITH CONTRACT 60R31, SEE NOTE 1

**NOTES**

- ADVANCE SIGN LOCATIONS SHALL BE COORDINATED WITH ADJACENT CONTRACT. "ROAD CONSTRUCTION AHEAD" SIGN SHALL BE PLACED WHEN WARRANTED BY WORK ZONE CONDITIONS OR AS DIRECTED BY THE ENGINEER.
- TEMPORARY CONCRETE BARRIER SHALL BE CONTINUOUSLY PINNED TO THE PAVEMENT. SEE MOT TYPICAL SECTIONS AND GENERAL NOTES.
- AT THE LIMITS OF THE CURB AND GUTTER, HORIZONTAL AND VERTICAL TRANSITIONS SHALL BE INSTALLED IN ACCORDANCE WITH THE MAINTENANCE OF TRAFFIC DETAILS AND AS DIRECTED BY THE ENGINEER.

COMBINATION CONCRETE CURB & GUTTER, TYPE B-6.12 (SPECIAL) STA. 4045+00 TO STA. 4053+43 (SEE NOTE 3)

FILE NAME:	USER NAME: #USER#	DESIGNED: PJO	REVISED: -ADDENDUM A 12/17/2012	<b>STATE OF ILLINOIS DEPARTMENT OF TRANSPORTATION</b>	<b>MAINTENANCE OF TRAFFIC - STAGE 1 ILLINOIS ROUTE 59</b>		F.A.P. RTE.:	SECTION:	COUNTY:	TOTAL SHEETS:	SHEET NO.:	
FILE#:		DRAWN: KES	REVISED: -		SCALE:	SHEET NO. 7 OF 118 SHEETS	STA. 4038+00 TO STA. 4051+00	338	(112 & 113) WRS-5	DUPAGE	963	123
		CHECKED: JCM	REVISED: -		CONTRACT NO. 60I31							
		DATE: 10/15/2012	REVISED: -		ILLINOIS FED. AID PROJECT							

