

MOT PAVEMENT MARKING LEGEND

- (A) TEMPORARY PAVEMENT MARKING - LINE 4", SOLID WHITE
- (B) TEMPORARY PAVEMENT MARKING - LINE 4", WHITE SKIP-DASH (10' LINE - 30' SPACE)
- (C) TEMPORARY PAVEMENT MARKING - LINE 4", SOLID YELLOW
- (D) TEMPORARY PAVEMENT MARKING - LINE 4", DOUBLE YELLOW SPACED AT 11" C-C WITH TEMPORARY RAISED REFLECTIVE PAVEMENT MARKERS SPACED 40' C-C (BI-DIRECTIONAL AMBER)
- (E) TEMPORARY PAVEMENT MARKING - LINE 6", SOLID WHITE
- (F) TEMPORARY PAVEMENT MARKING - LINE 6", WHITE DOTTED (2' LINE - 6' SPACE) (UNLESS OTHERWISE NOTED)
- (G) TEMPORARY PAVEMENT MARKING - LINE 8", SOLID WHITE
- (H) TEMPORARY PAVEMENT MARKING - LINE 12", SOLID WHITE
- (I) TEMPORARY PAVEMENT MARKING - LINE 12", SOLID YELLOW
- (J) TEMPORARY PAVEMENT MARKING - LINE 24", SOLID WHITE
- (K) TEMPORARY PAVEMENT MARKING, LETTERS & SYMBOLS
- (L) WET REFLECTIVE TEMPORARY TAPE, TYPE III, 4", SOLID WHITE
- (M) WET REFLECTIVE TEMPORARY TAPE, TYPE III, 4", WHITE SKIP-DASH (10' LINE - 30' SPACE)
- (N) WET REFLECTIVE TEMPORARY TAPE, TYPE III, 4", SOLID YELLOW
- (O) WET REFLECTIVE TEMPORARY TAPE, TYPE III, 4", DOUBLE YELLOW SPACED AT 11" C-C WITH TEMPORARY RAISED REFLECTIVE PAVEMENT MARKERS SPACED 40' C-C (BI-DIRECTIONAL AMBER)

- (P) WET REFLECTIVE TEMPORARY TAPE, TYPE III, 6", SOLID WHITE
- (Q) WET REFLECTIVE TEMPORARY TAPE, TYPE III, 6", WHITE DOTTED (2' LINE - 6' SPACE) (UNLESS OTHERWISE NOTED)
- (R) WET REFLECTIVE TEMPORARY TAPE, TYPE III, 8", SOLID WHITE
- (S) WET REFLECTIVE TEMPORARY TAPE, TYPE III, 12", SOLID YELLOW
- (T) WET REFLECTIVE TEMPORARY TAPE, TYPE III, 24", SOLID WHITE
- (U) WET REFLECTIVE TEMPORARY TAPE, TYPE III, LETTERS & SYMBOLS

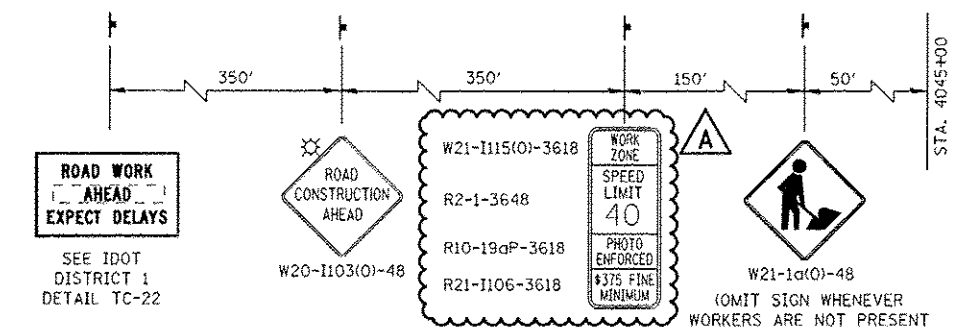
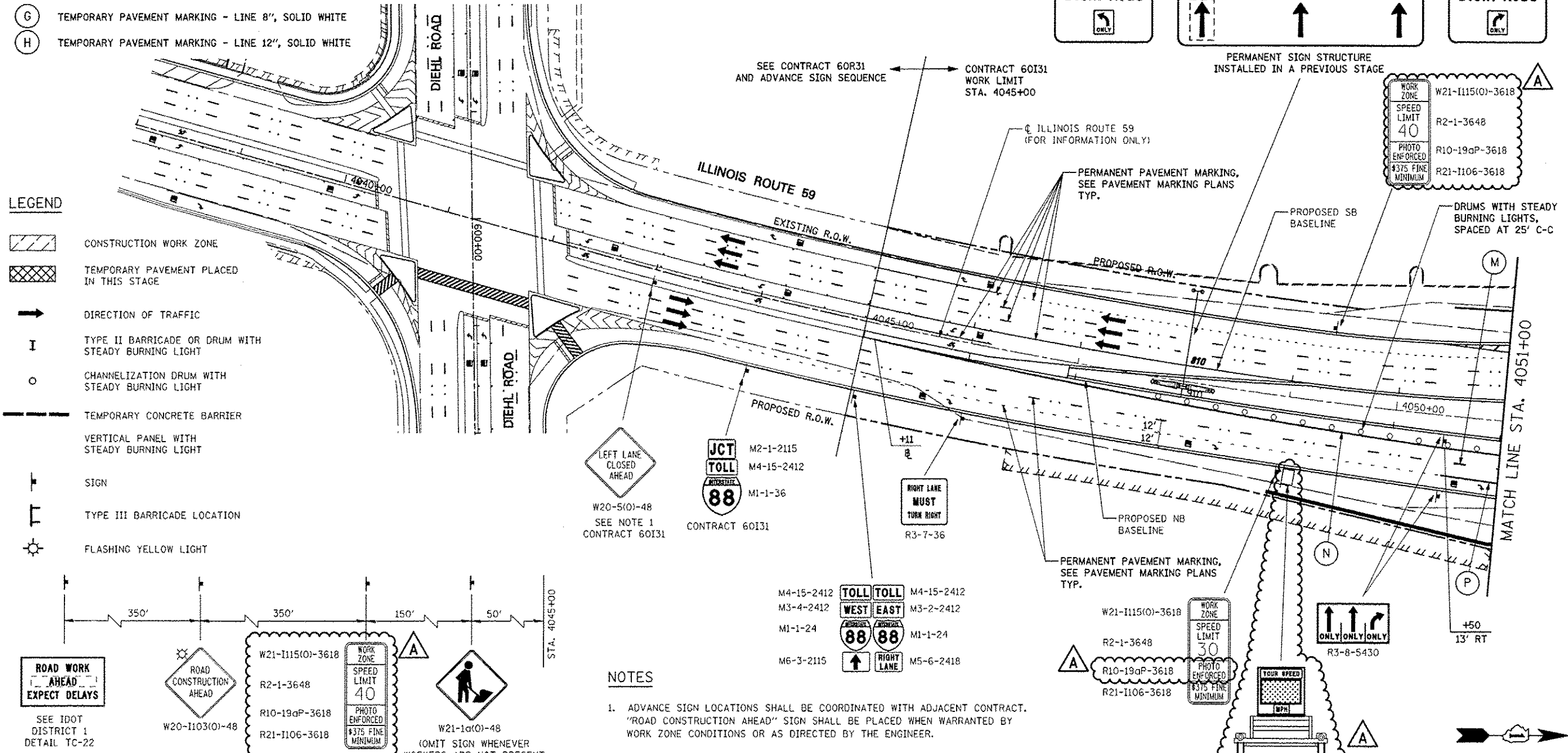
ALIGNMENT LEGEND

+39.5 INDICATES STATION MEASURED FROM SB BASELINE

+39.5 INDICATES STATION MEASURED FROM NB BASELINE

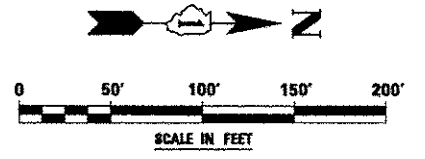
LEGEND

- CONSTRUCTION WORK ZONE
- TEMPORARY PAVEMENT PLACED IN THIS STAGE
- DIRECTION OF TRAFFIC
- TYPE II BARRICADE OR DRUM WITH STEADY BURNING LIGHT
- CHANNELIZATION DRUM WITH STEADY BURNING LIGHT
- TEMPORARY CONCRETE BARRIER
- VERTICAL PANEL WITH STEADY BURNING LIGHT
- SIGN
- TYPE III BARRICADE LOCATION
- FLASHING YELLOW LIGHT



NOTES

- ADVANCE SIGN LOCATIONS SHALL BE COORDINATED WITH ADJACENT CONTRACT. "ROAD CONSTRUCTION AHEAD" SIGN SHALL BE PLACED WHEN WARRANTED BY WORK ZONE CONDITIONS OR AS DIRECTED BY THE ENGINEER.
- LOCATION OF TRAILER MOUNTED SPEED INDICATOR SIGN SHALL BE COORDINATED WITH THE ENGINEER AND WILL BE MEASURED AND PAID FOR SEPARATELY UNDER SPEED INDICATOR SIGN.



FILE NAME =	USER NAME = *USER*	DESIGNED <i>PJO</i>	REVISED - ADDENDUM A 12/17/2012
FILE#		DRAWN <i>KES</i>	REVISED -
	PLOT SCALE = *SCALE*	CHECKED <i>JCM</i>	REVISED -
	PLOT DATE = *DATE*	DATE <i>10/15/2012</i>	REVISED -

**STATE OF ILLINOIS
DEPARTMENT OF TRANSPORTATION**

**MAINTENANCE OF TRAFFIC - STAGE 4B
ILLINOIS ROUTE 59**

SCALE: SHEET NO. 114 OF 118 SHEETS STA. 4038+00 TO STA. 4051+00

F.A.P. RTE.	SECTION	COUNTY	TOTAL SHEETS	SHEET NO.
338	(112 & 113) WRS-5	DUPAGE	963	230
CONTRACT NO. 60131				
ILLINOIS FED. AID PROJECT				