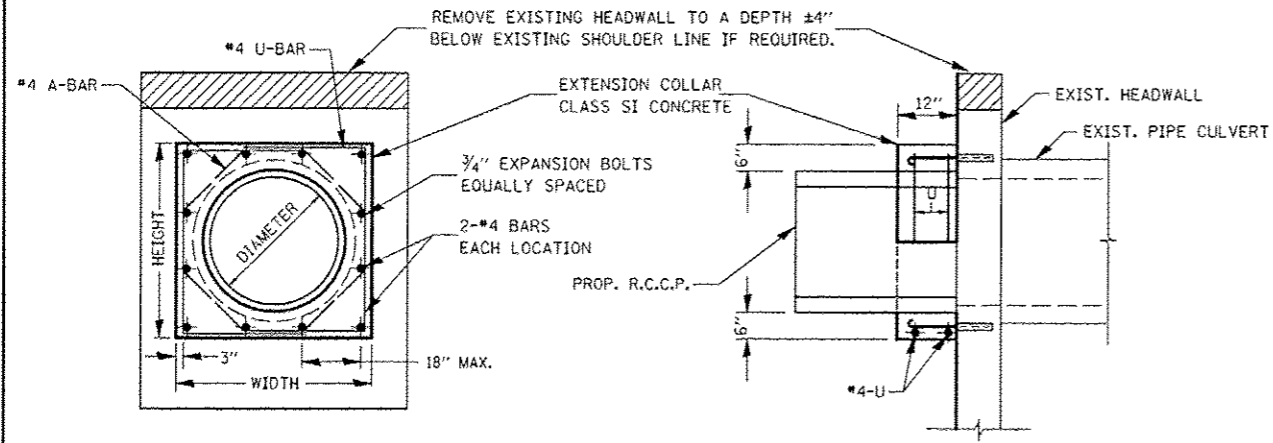
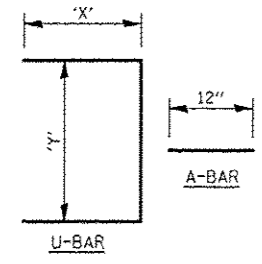


DATE: _____
 BY: _____
 PLAN: _____
 CHECKED: _____
 DATE: _____
 NO. _____

DATE: _____
 BY: _____
 PROFILE: _____
 CHECKED: _____
 DATE: _____
 NO. _____



EXPANSION BOLTS SHALL CONSIST OF SELF DRILLING EXPANSION SHIELDS AND 3/4" DIA. HOOKED BOLTS. HOOKED BOLTS SHALL EXTEND A MINIMUM OF 9" INTO NEW CONCRETE.
 MINIMUM CERTIFIED PROOF LOAD = 4,080 LBS



LOCATION	EXISTING CULVERT SIZE	PIPE DIMENSION	PIPE AREA	EXTENSION COLLAR		A-BAR			U-BAR		CLASS SI CONC. COLLAR	REINFORCEMENT BARS	3/4" DIA. EXPANSION BOLTS
				WIDTH	HEIGHT	12	'X'	'Y'	CU. YD.	POUND			
7005+35	24"	24"	1.8	42"	42"	12"	24"	36"	1.2	24	12		
B962+29	24"	24"	1.8	42"	42"	12"	24"	36"	1.2	24	12		

COLLAR DETAIL (EXTENSION OF PIPE CULVERT)

