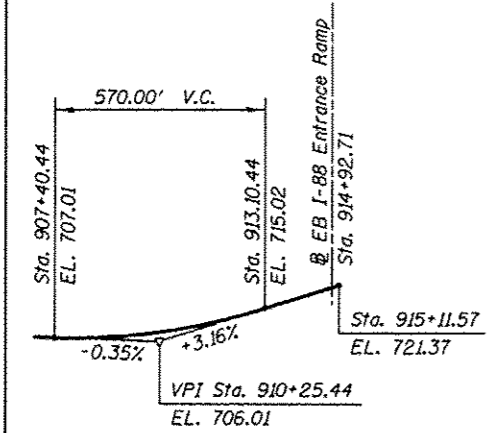
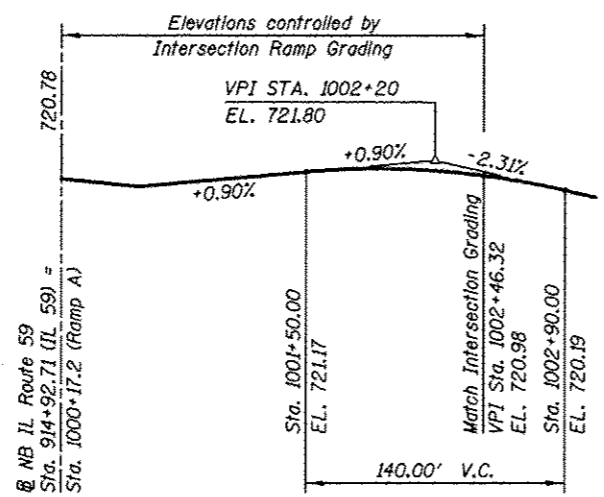


TYPICAL WALL SECTION
(For Details See Sheet SC-06)

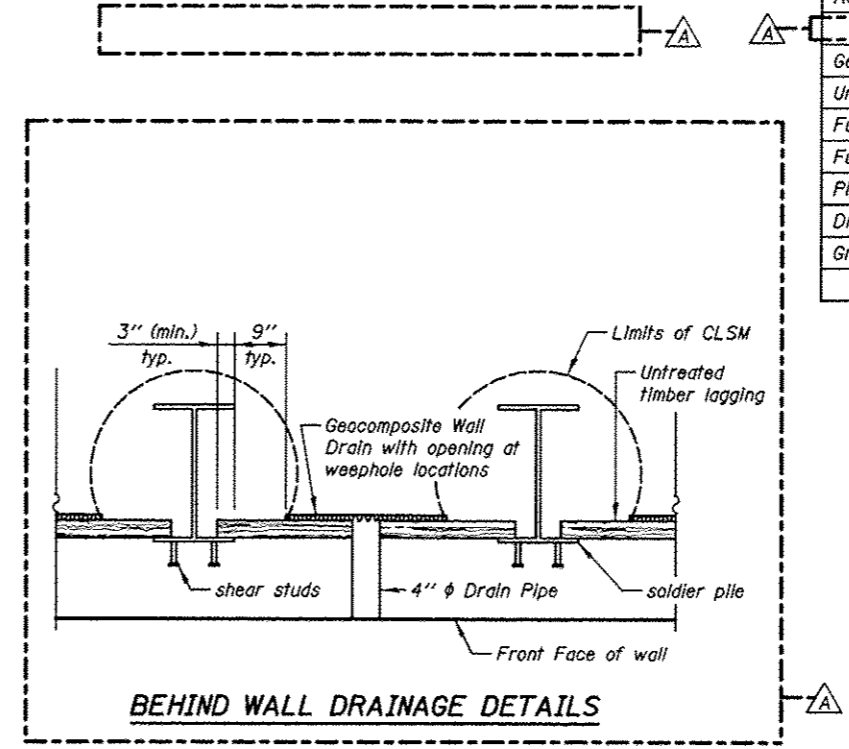


NB IL ROUTE 59 - PROPOSED PROFILE GRADE LINE

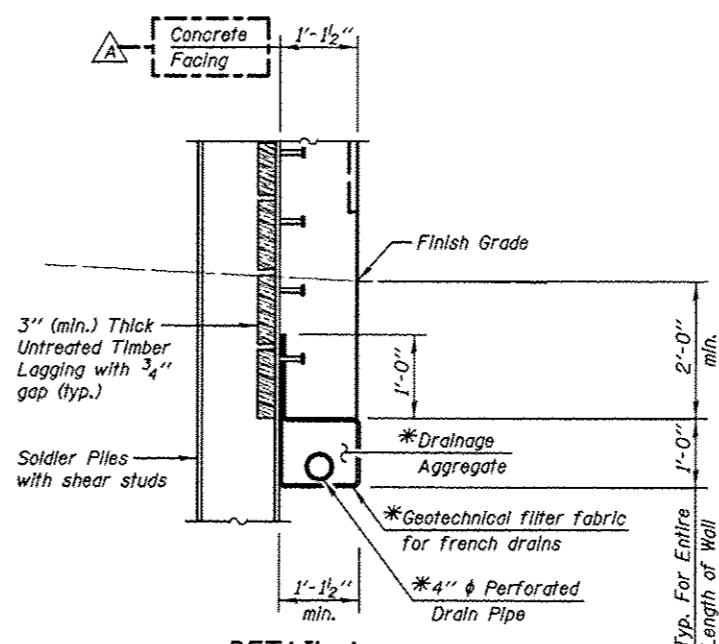


RAMP A - PROPOSED PROFILE GRADE LINE

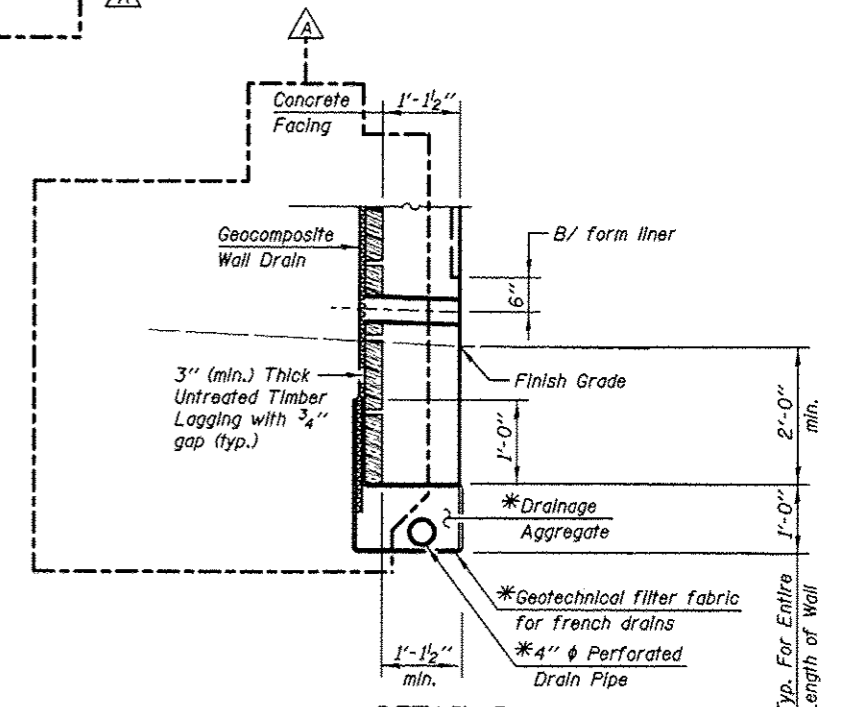
GENERAL NOTES
All structural steel shall conform to the requirements of AASHTO M 270 Grade 50 except as noted on plans.
Reinforcement bars designated (E) shall be epoxy coated.
The Contractor is responsible for the design and performance of the timber lagging using no less than a 3 in. nominal rough-sawn thickness and timber with a minimum allowable bending stress of 1000 psi.



BEHIND WALL DRAINAGE DETAILS



DETAIL A
(At Soldier Piles)



DETAIL B
(Between Soldier Piles)

UNDERDRAIN DETAIL
*Cost Included with "Pipe Underdrains for Structures"

TOTAL BILL OF MATERIAL

ITEM	UNIT	TOTAL
Structure Excavation	Cu. Yd.	115.0
Concrete Structures	Cu. Yd.	150.0
Form Liner Textured Surface	Sq. Ft.	1555.0
Stud Shear Connectors	Each	650
Reinforcement Bars, Epoxy Coated	Pound	13680
Geocomposite Wall Drain	Sq. Yd.	306.0
Untreated Timber Lagging	Sq. Ft.	2746.0
Furnishing Soldier Piles (HP Section)	Foot	546.0
Furnishing Soldier Piles (W Section)	Foot	1004.0
Pipe Underdrains for Structures 4"	Foot	489.0
Drilling And Setting Soldier Piles (In Soil)	Cu. Ft.	7620.0
Granular Backfill For Structures	Cu. Yd.	261.0

KNIGHT
Engineers & Architects

DESIGNED - TB
CHECKED - WPM
DRAWN - TB
CHECKED - WPM
SCALE - NONE
DATE - 10/15/2012

REVISIONS
12/17/2012 WPM
REVISIONS
REVISIONS
REVISIONS

STATE OF ILLINOIS
DEPARTMENT OF TRANSPORTATION

TOTAL BILL OF MATERIAL & MISCELLANEOUS DETAILS
STRUCTURE NUMBER 022-W064
SHEET NO. SC-02 OF 10 SHEETS

F.A.P. RTE.	SECTION	COUNTY	TOTAL SHEETS	SHEET NO.
338	(112 & 113) WRS-5	DUPAGE	963	653
CONTRACT NO. 60131				ILLINOIS FED. AID PROJECT