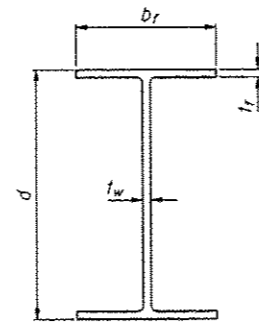
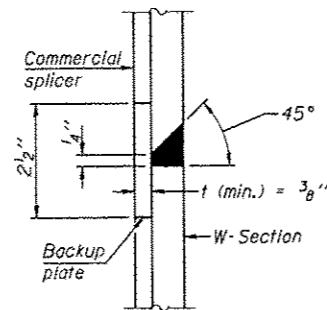


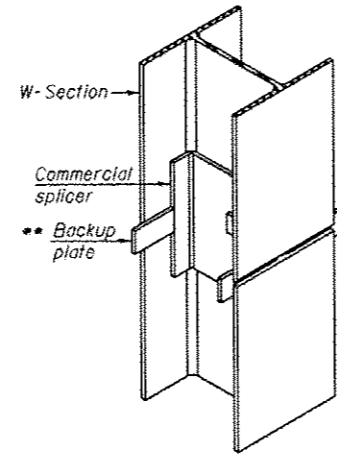
ELEVATION



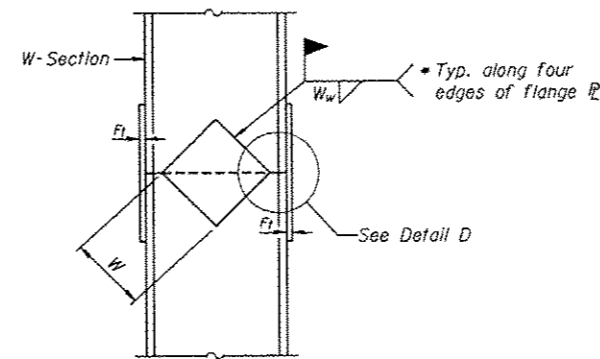
| Designation | Depth d | Flange width b_f | Flange thickness t_f | Web thickness t_w | Encasement diameter A |
|-------------|--------------------|--------------------|------------------------|---------------------|-------------------------|
| W27x146 | 27 $\frac{3}{8}$ " | 14" | 1" | $\frac{5}{8}$ " | 36" |



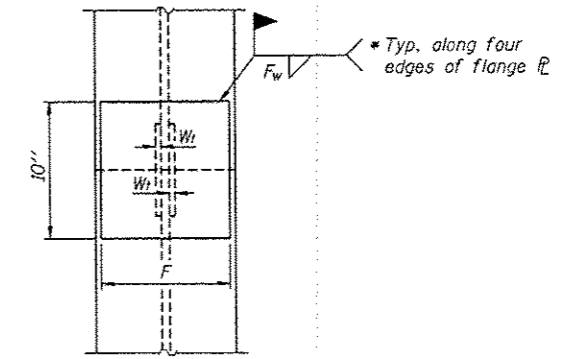
DETAIL "B"



ISOMETRIC VIEW

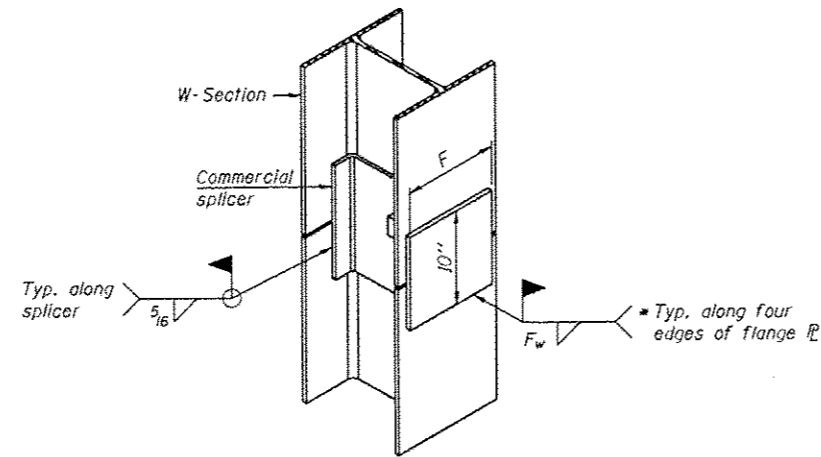


ELEVATION

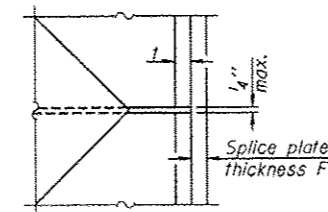


END VIEW

WELDED COMMERCIAL SPLICE



ISOMETRIC VIEW



DETAIL D

| Designation | F | F _f | F _w | W | W _f | W _w |
|-------------|-----|-------------------|-------------------|--------------------|-------------------|-------------------|
| W27x146 | 12" | 1 $\frac{1}{4}$ " | 3 $\frac{3}{4}$ " | 16 $\frac{3}{4}$ " | 6 $\frac{3}{8}$ " | 3 $\frac{3}{8}$ " |

WELDED PLATE FIELD SPLICE

WELDED COMMERCIAL SPLICE ALTERNATE

- * Interrupt welds $\frac{1}{4}$ " from end of web and/or each flange.
- ** Remove portions of backup plates that extend outside the flanges.

Note:
The steel W-Sections shall be according to AASHTO M270 Grade 36.

FILE NAME: ...160131-W065-009-PlateSpliceDetail.dwg



| | | |
|----------------------------|----------------|------------------------------------|
| USER NAME = SAW | DESIGNED - LAS | REVISED Δ 12/17/2012 L.A.S. |
| | CHECKED - DAZ | REVISED |
| PLOT SCALE = 8.1667' / IN. | DRAWN - SAW | REVISED |
| PLOT DATE = 12/12/2012 | CHECKED - JLA | REVISED |

STATE OF ILLINOIS
DEPARTMENT OF TRANSPORTATION

PILE SPLICE DETAILS
STRUCTURE NUMBER 022-W065

SHEET NO. 50-9 OF 50-11 SHEETS

| | | | | |
|---------------------------|-------------------|--------|--------------------|-----------|
| F.A.P. RTE. | SECTION | COUNTY | TOTAL SHEETS | SHEET NO. |
| 338/1L 59 | (112 & 113) WRS-5 | DUPAGE | 963 | 670 |
| | | | CONTRACT NO. 60131 | |
| ILLINOIS FED. AID PROJECT | | | | |