

- NOTES:
- 1 - ALL SLOPES GREATER THAN 4H:1V SHALL HAVE EROSION CONTROL BLANKET FOR STABILIZATION.
 - 2 - ALL DRAINAGE WAYS SHALL HAVE EROSION CONTROL BLANKET TO A MINIMUM DEPTH OF 2' FOR STABILIZATION.
 - 3 - SEE LANDSCAPING PLAN SHEET FOR LOCATION OF VARIOUS SEED MIXTURES.

EROSION CONTROL BLANKET

PLACE FILTERBAG ON DENSE MATURE GRASS OR ON AN AGGREGATE BASE (COARSE AGGREGATE ONLY) CONFORMING TO SECTION 1081.13 OF THE STANDARD SPECIFICATIONS

ENSURE THAT RUNOFF FROM THE BAG LOCATION IS PREVENTED FROM CAUSING EROSION BY GRASS, STONE, OR GEOTEXTILE LINING OF DISCHARGE CHANNEL.

REMOVE SILT WHEN BAG IS HALF FULL OR MORE OFTEN IF RECOMMENDED BY THE MANUFACTURER. DISPOSE OF SILT BY TRANSPORTING THE FILLED BAG TO DISPOSAL AREA. SLIT THE BAG, BLEND SILT INTO EXISTING TOPOGRAPHY, SEED AND MULCH

MAINTAIN EXTRA FILTER BAGS ON SITE. REPLACE DAMAGED BAGS PROMPTLY.

TYPICAL FLOW RATE: 10 GPM x W x L

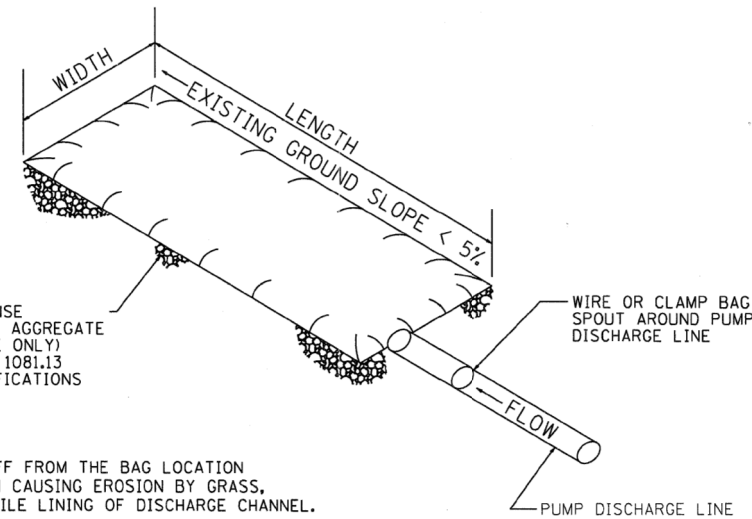
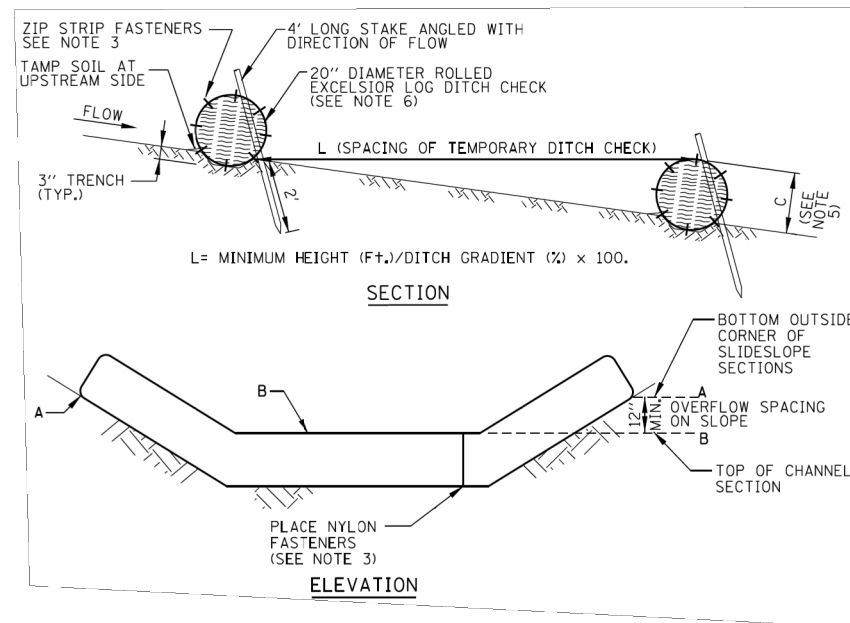


FIGURE S1. SEDIMENT FILTER BAG

NOTE: DEWATERING SYSTEM DETAILS SHALL BE USED IN CONJUNCTION WITH THE PROJECT SPECIAL PROVISIONS.



NOTES:

1. ROLLED EXCELSIOR LOG SHALL BE EMBEDDED IN THE SOIL A MINIMUM OF 3" AND SOIL SHALL BE TAMPED AGAINST THE UPSTREAM SIDE TO ASSURE THAT STORM WATER IS FORCED THROUGH THE LOG, RATHER THAN UNDER IT.
2. STAKES SHALL BE 4' LONG, DRIVEN AT A SPACING OF 2' ON CENTER, 2' INTO THE GROUND. STAKES SHALL BE ENTWINED WITH THE MESH COVERING OF THE ROLL ON THE DOWNSTREAM SIDE AND ANGLED WITH THE DIRECTION OF FLOW. WOOD STAKES TO BE A MINIMUM OF 1" SQUARE. METAL STAKES SHALL BE A MINIMUM OF 1" DIAMETER.
3. WHEN MORE THAN ONE LOG IS REQUIRED TO SPAN THE DITCH, BUTT LOGS TIGHTLY TOGETHER END TO END AND FASTEN TOGETHER WITH A MINIMUM OF EIGHT EQUALLY SPACED ZIP STRIP NYLON FASTENERS.
4. ROLLED EXCELSIOR LOG DITCH CHECKS ARE SUPPLIED IN STANDARD 10 FOOT LENGTHS AND SHOULD NOT BE CUT.
5. MAINTENANCE SHALL BE PERFORMED AS NEEDED AND SILT SHALL BE REMOVED WHEN IT REACHES 50% OF ROLL HEIGHT. WHEN EXCELSIOR LOG HEIGHT BECOMES LESS THAN 10", IT SHALL BE REPLACED.
6. TEMPORARY DITCH CHECK TO BE USED TO CONTROL FLOW IN DITCHES. THE DITCH CHECK IS NOT A SUBSTITUTE FOR SEDIMENT TRAPS OR BASINS. PLACE UPSTREAM OF TRAPS OR BASINS AND MAINTAIN IN PLACE UNTIL SEEDING IS ESTABLISHED.

DITCH CHECK DETAIL

SEDIMENTATION AND EROSION CONTROL

1. THE CONSTRUCTION LIMITS WILL BE STAKED BY THE ENGINEER PRIOR TO COMMENCING CONSTRUCTION. THE CONSTRUCTION LIMITS MAY BE ADJUSTED BY THE ENGINEER TO PRESERVE TREES AND NO ADDITIONAL COMPENSATION WILL BE PAID TO THE CONTACT OR FOR CHANGED CONSTRUCTION LIMITS.
2. PERIMETER EROSION BARRIER SHALL BE ERECTED ADJACENT TO THE CONSTRUCTION LIMITS AS INDICATED ON THE ESC PLAN. THE RESIDENT ENGINEER SHALL MAKE THE FINAL DETERMINATION ON THE PLACEMENT AND LOCATION OF THE PERIMETER EROSION BARRIER.
3. A COPY OF THE APPROVED EROSION AND SEDIMENT CONTROL PLAN SHALL BE MAINTAINED ON SITE. ALL CHANGES TO THE SOIL EROSION AND SEDIMENT CONTROL PLAN SHALL BE NOTED ON THE SITE PLAN.
4. SOIL DISTURBANCE SHALL BE CONDUCTED IN SUCH A MANNER AS TO MINIMIZE EROSION. SOIL STABILIZATION MEASURES SHALL CONSIDER THE TIME OF THE YEAR, SITE CONDITIONS AND THE USE OF TEMPORARY OR PERMANENT MEASURES.
5. SOIL EROSION AND SEDIMENT CONTROL FEATURES SHALL BE CONSTRUCTED PRIOR TO THE COMMENCEMENT OF HYDROLOGIC DISTURBANCE OF UPLAND AREAS.
6. DISTURBED AREAS SHALL BE STABILIZED WITH TEMPORARY OR PERMANENT MEASURES WITHIN 7 CALENDAR DAYS OF THE END OF ACTIVE HYDROLOGIC DISTURBANCE, OR RE-DISTURBANCE. A QUANTITY OF TEMPORARY EROSION CONTROL SEEDING IS INCLUDED FOR AREAS THAT ARE DISTURBED BUT WILL NOT BE RESTORED WITHIN 14 DAYS.
7. ALL STORM SEWERS THAT ARE OR WILL BE FUNCTIONING DURING CONSTRUCTION SHALL BE PROTECTED BY AN APPROPRIATE SEDIMENT CONTROL MEASURE.
8. ALL TEMPORARY EROSION AND SEDIMENT CONTROL MEASURES SHALL BE REMOVED WITHIN 30 DAYS AFTER FINAL SITE STABILIZATION IS ACHIEVED OR AFTER THE TEMPORARY MEASURES ARE NO LONGER NEEDED, AS APPROVED BY THE ENGINEER.
9. ALL TEMPORARY AND PERMANENT EROSION CONTROL MEASURES MUST BE MAINTAINED AND REPAIRED AS NEEDED. THE PRIME CONTRACTOR SHALL BE ULTIMATELY RESPONSIBLE FOR MAINTENANCE AND REPAIR; THE CONTRACTOR SHALL INSPECT ALL SOIL EROSION CONTROL MEASURES ON A WEEKLY BASIS OR AFTER A ONE- HALF INCH RAINFALL AND REPLACE, REPAIR OR CLEAN THEM ON A TIMELY BASIS. ADDITIONALLY DURING WINTER MONTHS, ALL MEASURES SHOULD BE CHECKED AFTER EACH SIGNIFICANT SNOW MELT. ALL OFF SITE BORROW, WASTE, AND USE AREAS ARE PART OF CONSTRUCTION SITE AND ARE TO BE INSPECTED AT THE SAME FREQUENCY OF ON SITE INSPECTIONS.
10. ANY SEDIMENT OR SOIL REACHING AN IMPROVED PUBLIC RIGHT-OF-WAY, STREET, ALLEY OR PARKING AREA SHALL BE REMOVED BY SCRAPING OR STREET CLEANING AS ACCUMULATIONS WARRANT AND TRANSPORTED TO A CONTROLLED SEDIMENT DISPOSAL AREA. ALL PRECAUTIONS SHALL BE TAKEN TO AVOID TRACKING DURING CONSTRUCTION.
11. SOIL STOCKPILES SHALL NOT BE LOCATED IN A FLOOD PRONE AREA OR A DESIGNATED BUFFER PROTECTING WATERS OF THE UNITED STATES STOCKPILES OR SOIL AND OTHER BUILDING MATERIALS TO REMAIN IN PLACE MORE THAN THREE (3) DAYS SHALL BE FURNISHED WITH EROSION AND SEDIMENT CONTROL MEASURES (I.E. PERIMETER SILT FENCE). STOCKPILES TO REMAIN UNDISTURBED FOR MORE THAN 14 DAYS WILL RECEIVE TEMPORARY SEEDING WITHIN 7 CALENDAR DAYS.
12. IF DEWATERING SERVICES ARE USED, ADJOINING PROPERTIES AND DISCHARGE LOCATIONS SHALL BE PROTECTED FROM EROSION. DISCHARGES SHALL BE ROUTED THROUGH AN EFFECTIVE SEDIMENT CONTROL MEASURE (E.G. SEDIMENT TRAP, SEDIMENT BASIN, SILT FILTER BAG (SPECIAL) OR OTHER APPROPRIATE MEASURE.
13. THE EROSION CONTROL MEASURES INDICATED ON THE PLANS ARE THE MINIMUM REQUIREMENTS. ADDITIONAL MEASURES MAY BE REQUIRED, AS DIRECTED BY THE ENGINEER OR GOVERNING AGENCY.
14. THE CONDITION OF THE CONSTRUCTION SITE FOR WINTER SHUTDOWN SHALL BE ADDRESSED EARLY IN THE FALL GROWING SEASON SO THAT SLOPES AND OTHER ARE EARTH AREAS MAY BE STABILIZED WITH TEMPORARY AND/OR PERMANENT VEGETATIVE COVER FOR PROPER EROSION AND SEDIMENT CONTROL. ALL OPEN AREAS THAT ARE TO REMAIN IDLE THROUGHOUT THE WINTER SHALL RECEIVED TEMPORARY EROSION CONTROL MEASURES INCLUDING TEMPORARY SEEDING, MULCHING AND/OR EROSION CONTROL BLANKET PRIOR TO THE END OF THE FALL GROWING SEASON. THE AREAS TO BE WORKED BEYOND THE END OF THE GROWING SEASON MUST INCORPORATE SOIL STABILIZATION MEASURES THAT DO NOT RELY ON VEGETATIVE COVER SUCH AS EROSION CONTROL BLANKET AND HEAVY MULCHING.
15. UNLESS OTHERWISE INDICATED, ALL VEGETATIVE AND STRUCTURAL EROSION AND SEDIMENT CONTROL PRACTICES WILL BE CONSTRUCTED ACCORDING TO MINIMUM STANDARDS AND SPECIFICATIONS IN THE LATEST EDITION OF THE ILLINOIS URBAN MANUAL.
16. THE DEPARTMENT HAS NOT OBTAINED ANY PERMITS FOR OFF SITE BORROW, WASTE, USE (BWU) AREAS, PRIOR TO WORKING IN BWU AREAS, IF THE CONTRACTOR CHOOSES TO USE ACTIVITIES REQUIRING PERMITS IT IS THE CONTRACTOR'S RESPONSIBILITY TO SECURE THE PROPER PERMITS. IN ADDITION TO THE BORROW REVIEW (BDE 2289) AND USE/WASTE REVIEW (BDE 2290) SUBMITTALS, THE CONTRACTOR SHALL SUBMIT AN EROSION CONTROL AND SEDIMENT CONTROL (ESC) PLAN FOR EVERY BWU SITE TO THE DEPARTMENT FOR ACCEPTANCE. GUIDELINES FOR ACCEPTABLE BWU PRACTICES CAN BE FOUND IN SECTION 11.5.a and b OF THE SWPPP. THE COST OF ALL MATERIALS AND LABOR NECESSARY TO COMPLY WITH THE ABOVE PROVISIONS TO PREPARE AND IMPLEMENT ESC PLANS WILL NOT BE PAID FOR SEPARATELY, BUT SHALL BE CONSIDERED AS INCLUDED IN THE UNIT BID PRICES OF THE CONTRACT AND NO ADDITIONAL COMPENSATION WILL BE ALLOWED.
17. THE CONTRACTOR IS RESPONSIBLE FOR INSTALLATION OF ANY ADDITIONAL EROSION CONTROL MEASURES NECESSARY TO PREVENT EROSION AND SEDIMENTATION AS DETERMINED BY THE ENGINEER.
18. IT IS THE RESPONSIBILITY OF THE GENERAL CONTRACTOR TO INFORM ANY SUB-CONTRACTOR(S) WHO MAY PERFORM WORK ON THIS PROJECT OF THE REQUIREMENTS IN IMPLEMENTING AND MAINTAINING THESE EROSION CONTROL PLANS AND THE NATIONAL POLLUTANT DISCHARGE ELIMINATION SYSTEM (NPDES) PERMIT REQUIREMENT SET FORTH BY THE ILLINOIS EPA.
19. PERMANENT STABILIZATION ON STAGE 1 MUST BE COMPLETED PRIOR TO SWITCHING TRAFFIC TO THE STAGE 2 CONFIGURATION.

I:\6710\671018 - McCarthy at Walker - Intersection_imp\CADD\CADD SHEETS\60L79-ht-arcs.dwt.dgn

FILE NAME =	USER NAME = rgo11	DESIGNED - RG	REVISED -	STATE OF ILLINOIS DEPARTMENT OF TRANSPORTATION	EROSION CONTROL DETAILS AND GENERAL NOTES				F.A.U. RTE.	SECTION	COUNTY	TOTAL SHEETS	SHEET NO.	
		DRAWN - RG	REVISED -		SCALE:	SHEET NO.	OF SHEETS	STA.	TO STA.	1587	3098-R	COOK	95	38
		CHECKED - MGR	REVISED -		CONTRACT NO. 60L79									
		DATE - MARCH, 2012	REVISED -		ILLINOIS FED. AID PROJECT									