

F.A.P. RTE.	SECTION	COUNTY	TOTAL SHEETS	SHEET NO.
326	106X-B	KANE	87	1
		ILLINOIS	CONTRACT NO. 60N13	

FOR INDEX OF SHEETS, SEE SHEET NO. 2

PROJECT LOCATED IN THE TOWNSHIP OF CAMPTON

DESIGN DESIGNATION : 1,325(20) OTHER PRINCIPAL ARTERIAL 5.75 (FD-20)

POSTED SPEED: 55 MPH
 DESIGN SPEED: 60 MPH
 ADT = 5,600 (2009); 17,000 (2030)
 P.V. = 83.5% S.U. = 5.4% M.U. = 11.1%

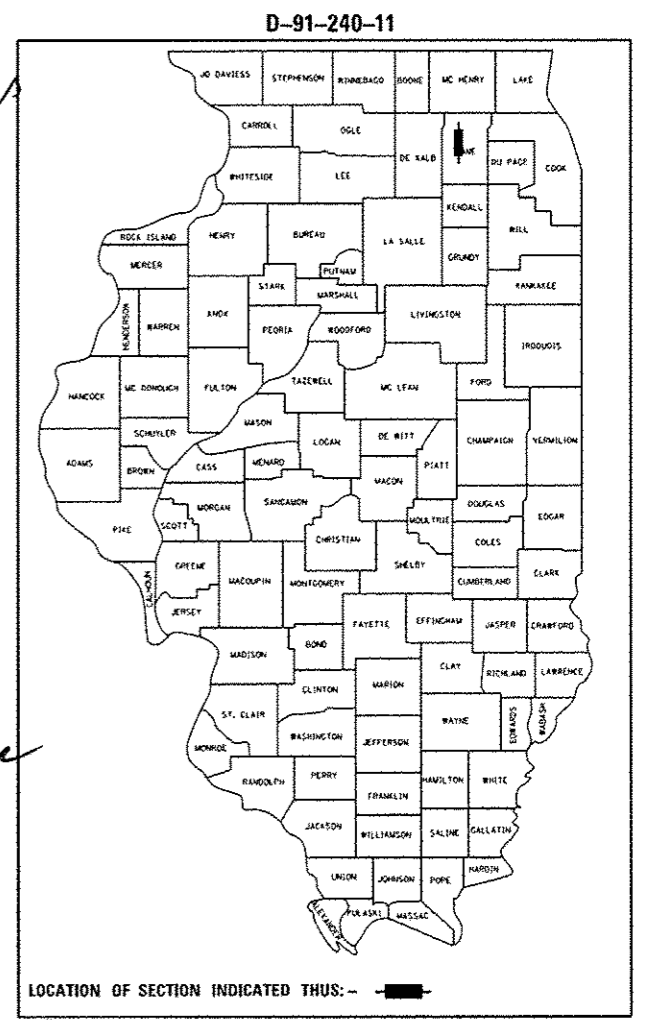
STATE OF ILLINOIS
 DEPARTMENT OF TRANSPORTATION
 DIVISION OF HIGHWAYS
**PROPOSED
 HIGHWAY PLANS**
 FAP ROUTE 326 (IL ROUTE 47)
 SECTION 106X-B
 OVER VIRGIL DITCH #2
 PROJECT NO. ACF-0326(087)
 BRIDGE REPLACEMENT
 KANE COUNTY
 C-91-240-11

10-11-12
 Expires 11-30-13
 LICENSED PROFESSIONAL ENGINEER
 JOSEPH A. REGIS
 47290
 STATE OF ILLINOIS

10-11-12
 EXP 11-30-13
 LICENSED PROFESSIONAL ENGINEER
 JEFFREY T. SNAPE
 062-061756
 STATE OF ILLINOIS

10-11-12
 LICENSED STRUCTURAL ENGINEER
 MICHAEL J. TRELLO
 081-008384
 STATE OF ILLINOIS
 Exp 11/30/12

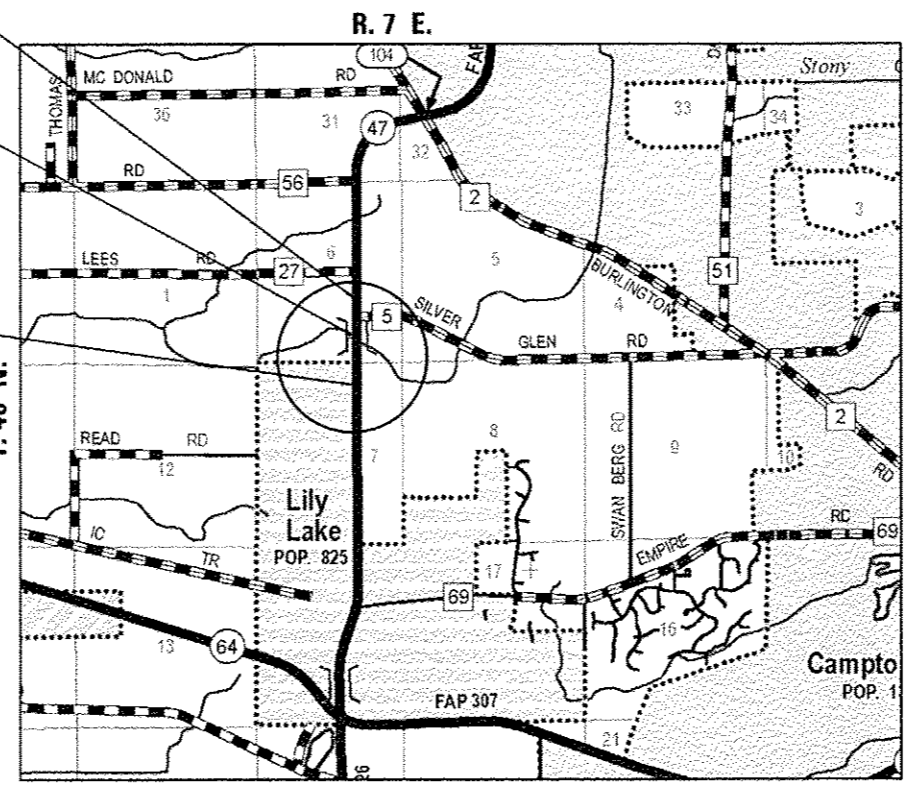
10-11-12
 LICENSED PROFESSIONAL ENGINEER
 MICHAEL C. VAIL
 082-049258
 STATE OF ILLINOIS
 Exp 11-30-13



IMPROVEMENT ENDS
 STA. 1471 + 00.00

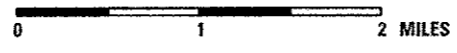
PROPOSED S.N. 045-0078
 STATION 1462 + 82.31

IMPROVEMENT BEGINS
 STA. 1454 + 50.00



LOCATION MAP

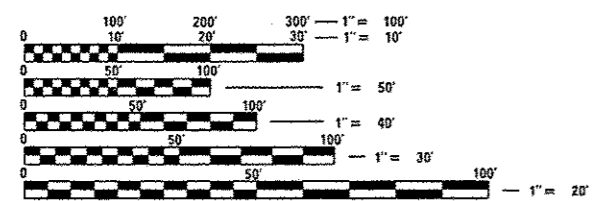
CAMPTON TOWNSHIP



SCALE: 1" = 1 MILE

GROSS LENGTH = 1650 FT. = 0.313 MILE

NET LENGTH = 1650 FT. = 0.313 MILE



FULL SIZE PLANS HAVE BEEN PREPARED USING STANDARD ENGINEERING SCALES. REDUCED SIZED PLANS WILL NOT CONFORM TO STANDARD SCALES. IN MAKING MEASUREMENTS ON REDUCED PLANS, THE ABOVE SCALES MAY BE USED.

J.U.L.I.E.
 JOINT UTILITY LOCATION INFORMATION FOR EXCAVATION
 1-800-892-0123
 OR 811

PROJECT MANAGER: ISAAC KWARTENG (847) 705-4230
 PROJECT ENGINEER: ALIX BRICE (847) 705-4552

CONTRACT NO. 60N13

STATE OF ILLINOIS
 DEPARTMENT OF TRANSPORTATION
 DIVISION OF HIGHWAYS

SUBMITTED October 15 20 12
John Fortman
 DEPUTY DIRECTOR OF HIGHWAYS, REGION ENGINEER

Dec 7 20 12
John D. Baranelli, P.E.
 acting ENGINEER OF DESIGN AND ENVIRONMENT

Dec 7 20 12
William B. Frey, Jr.
 acting DIRECTOR OF HIGHWAYS, CHIEF ENGINEER

PRINTED BY THE AUTHORITY
 OF THE STATE OF ILLINOIS