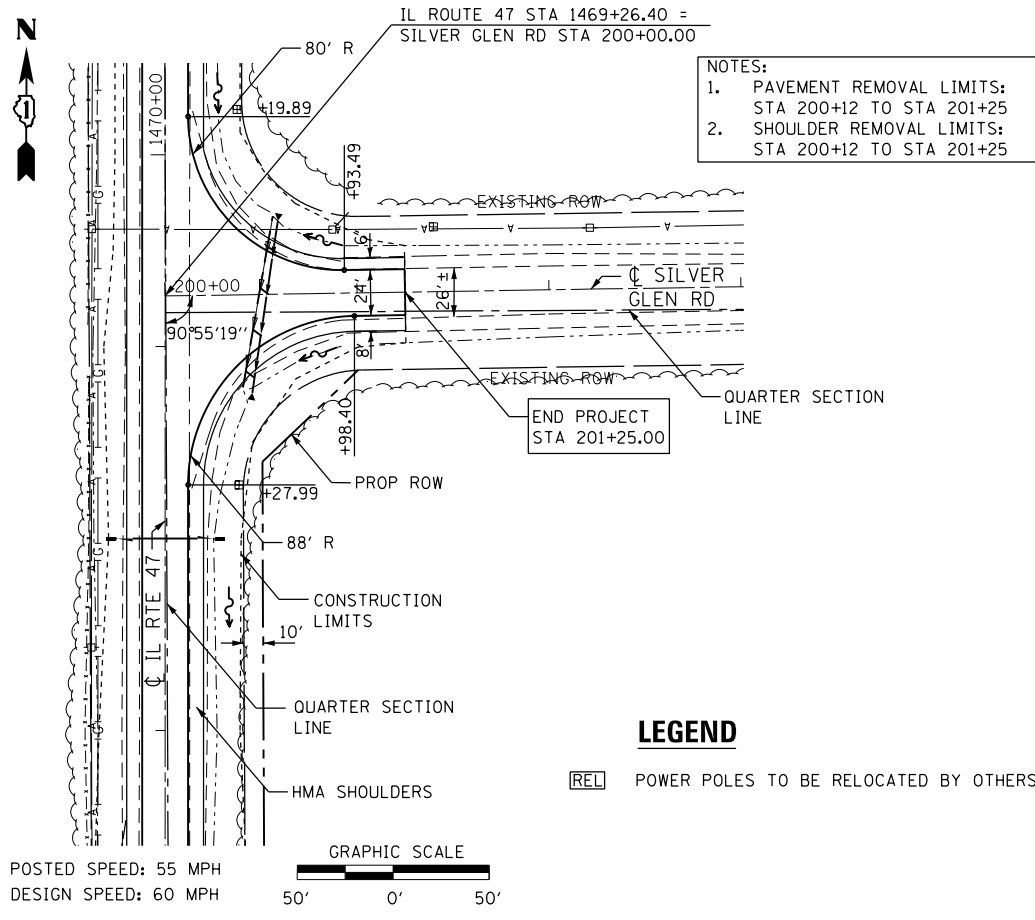


PLAN	SURVEYED	DATE
	PLOTTED	
	NOTE BOOK	
	NO.	
	CHECKED	
	CARD FILE NAME	



- NOTES:
- PAVEMENT REMOVAL LIMITS: STA 200+12 TO STA 201+25
  - SHOULDER REMOVAL LIMITS: STA 200+12 TO STA 201+25

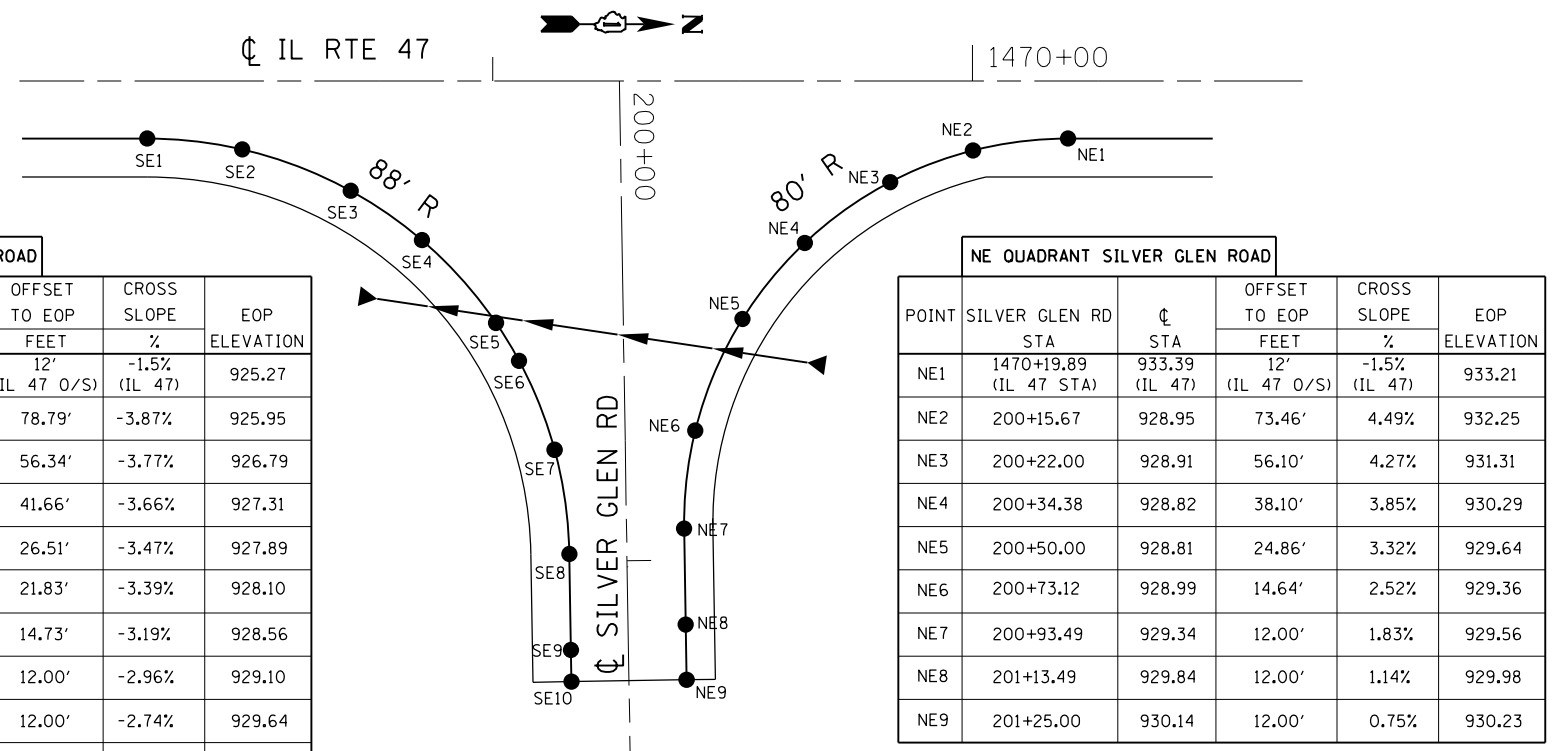
**LEGEND**

[REL] POWER POLES TO BE RELOCATED BY OTHERS

POSTED SPEED: 55 MPH  
DESIGN SPEED: 60 MPH

GRAPHIC SCALE  
50' 0' 50'

POINT	SILVER GLEN RD STA	ELEVATION	OFFSET TO EOP	CROSS SLOPE	EOP
			FEET	%	ELEVATION
SE1	1468+27.99 (IL 47 STA)	925.45 (IL 47)	12' (IL 47 O/S)	-1.5% (IL 47)	925.27
SE2	200+13.00	929.00	78.79'	-3.87%	925.95
SE3	200+22.00	928.91	56.34'	-3.77%	926.79
SE4	200+32.52	928.83	41.66'	-3.66%	927.31
SE5	200+50.00	928.81	26.51'	-3.47%	927.89
SE6	200+57.99	928.84	21.83'	-3.39%	928.10
SE7	200+76.65	929.03	14.73'	-3.19%	928.56
SE8	200+98.40	929.46	12.00'	-2.96%	929.10
SE9	201+18.40	929.97	12.00'	-2.74%	929.64
SE10	201+25.00	930.14	12.00'	-2.67%	929.82

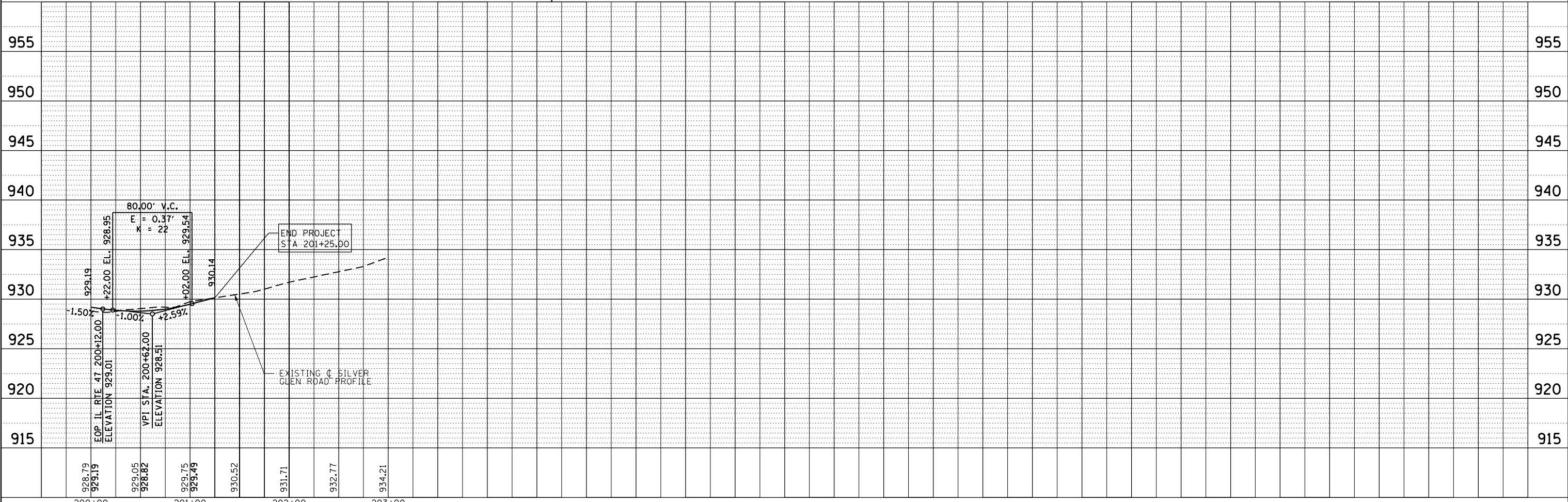


POINT	SILVER GLEN RD STA	ELEVATION	OFFSET TO EOP	CROSS SLOPE	EOP
			FEET	%	ELEVATION
NE1	1470+19.89 (IL 47 STA)	933.39 (IL 47)	12' (IL 47 O/S)	-1.5% (IL 47)	933.21
NE2	200+15.67	928.95	73.46'	4.49%	932.25
NE3	200+22.00	928.91	56.10'	4.27%	931.31
NE4	200+34.38	928.82	38.10'	3.85%	930.29
NE5	200+50.00	928.81	24.86'	3.32%	929.64
NE6	200+73.12	928.99	14.64'	2.52%	929.36
NE7	200+93.49	929.34	12.00'	1.83%	929.56
NE8	201+13.49	929.84	12.00'	1.14%	929.98
NE9	201+25.00	930.14	12.00'	0.75%	930.23

**INTERSECTION DETAIL**

GRAPHIC SCALE  
20' 10' 0' 20'

PROFILE	SURVEYED	DATE
	PLOTTED	
	GRADES CHECKED	
	STRUCTURE NOTATIONS CHECKED	
	NO.	



FILE NAME = D:\6013-ht-pln\p03.dgn  
MODEL DRIVER = V81.PDF\_11x17.plt  
PLOT DRIVER = V81.PDF\_11x17.plt



USER NAME = mmann  
PLOT SCALE = 100.0000' / 1"  
PLOT DATE = 10/24/2012

DESIGNED - MCV  
DRAWN - CMM  
CHECKED - MTM  
DATE - 10/12

REVISED -  
REVISED -  
REVISED -  
REVISED -

STATE OF ILLINOIS  
DEPARTMENT OF TRANSPORTATION

SILVER GLEN RD  
PROPOSED PLAN AND PROFILE

SCALE: 1"=50' SHEET NO. 1 OF 1 SHEETS STA. 200+00 TO STA. 203+00

F.A.P. RTE.	SECTION	COUNTY	TOTAL SHEETS	SHEET NO.
326	106X-B	KANE	87	13
CONTRACT NO. 60N13				
ILLINOIS FED. AID PROJECT				