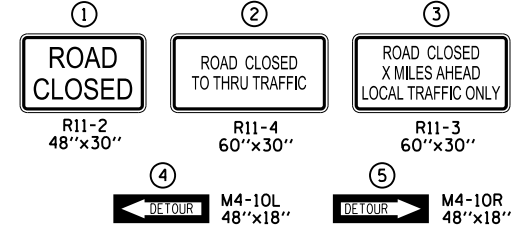


- SEE DISTRICT 1 DETAIL TC-21 "DETOUR SIGNING FOR CLOSING STATE HIGHWAYS" FOR SIGN TYPES AND PLACEMENT OF THE DETOUR ROUTE SIGNING.
- DETOUR ROUTE SIGNING SHALL NOT BE PAID FOR SEPARATELY BUT SHALL BE INCLUDED IN THE COST OF TRAFFIC CONTROL AND PROTECTION (SPECIAL).
- SIGNING SHOWN IS FOR PRE-STAGE INSTALLATION OF BOX CULVERTS ACROSS ILL 47.

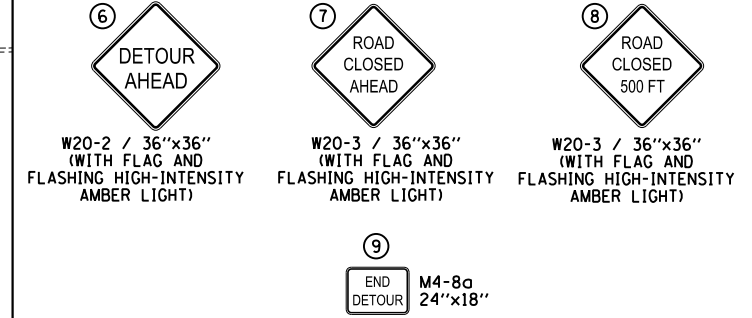
LEGEND

- DETOUR ROUTE
- PARTIALLY CLOSED PORTION
- COMPLETELY CLOSED PORTION
- DETOUR ROUTE SIGN
- TYPE III BARRICADE

SIGNS MOUNTED ON TYPE III BARRICADES



GENERAL POST-MOUNTED SIGNS



INDEX OF PANELS

- PANEL A TO M4-5 24"x12"
- PANEL B DETOUR M4-8 24"x12"
- PANEL C NORTH M3-1 24"x12"
- PANEL D SOUTH M3-3 24"x12"
- PANEL E WEST M3-2 24"x12"
- PANEL F EAST M3-4 24"x12"
- PANEL G M5-1 (L) 21"x15"
- PANEL H M6-1 (L) 21"x15"
- PANEL I M5-1 (R) 21"x15"
- PANEL J M6-1 (R) 21"x15"
- PANEL K M6-3 21"x15"
- PANEL L ILLINOIS 47 M1-5 24"x24"
- PANEL M BURLINGTON ROAD W17-1-100 36"x18"
- PANEL N SILVER GLEN ROAD W17-1-100

THIS DETOUR PLAN IS TO BE USED FOR THE CLOSURE OF BURLINGTON ROAD AT ILLINOIS ROUTE 47, IN COORDINATION WITH THE CONSTRUCTION STAGING AS DEPICTED IN THE PLANS.

ALL SIGNING MODIFICATIONS NECESSARY TO INSTALL, REMOVE OR MODIFY THIS DETOUR PLAN SHALL BE INCIDENTAL TO TRAFFIC CONTROL AND PROTECTION. NO ADDITIONAL COMPENSATION WILL BE GRANTED.

WESTBOUND BURLINGTON ROAD DETOURS		EASTBOUND BURLINGTON ROAD DETOURS		NORTHBOUND ILLINOIS ROUTE 47 DETOURS		SOUTHBOUND ILLINOIS ROUTE 47 DETOURS	
ASSEMBLY	PANEL LIST	ASSEMBLY	PANEL LIST	ASSEMBLY	PANEL LIST	ASSEMBLY	PANEL LIST
10	B,E,M,G	15	B,F,M,G	20	B,C,L,G	25	B,D,L,G
11	B,E,M,H	16	B,F,M,H	21	B,C,L,H	26	B,D,L,H
12	B,E,M,I	17	B,F,M,I	22	B,C,L,I	27	B,D,L,I
13	B,E,M,J	18	B,F,M,J	23	B,C,L,J	28	B,D,L,J
14	B,E,M,K	19	B,F,M,K	24	B,C,L,K	29	B,D,L,K

WESTBOUND SILVER GLEN ROAD DETOURS		EASTBOUND SILVER GLEN ROAD DETOURS		OTHER DETOUR SIGNS	
ASSEMBLY	PANEL LIST	ASSEMBLY	PANEL LIST	ASSEMBLY	PANEL LIST
30	B,E,N,G	35	B,F,N,G	40	6+M
31	B,E,N,H	36	B,F,N,H	41	6+M+N
32	B,E,N,I	37	B,F,N,I	42	6+N
33	B,E,N,J	38	B,F,N,J		
34	B,E,N,K	39	B,F,N,K		

FOR INFORMATION ONLY