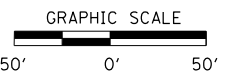
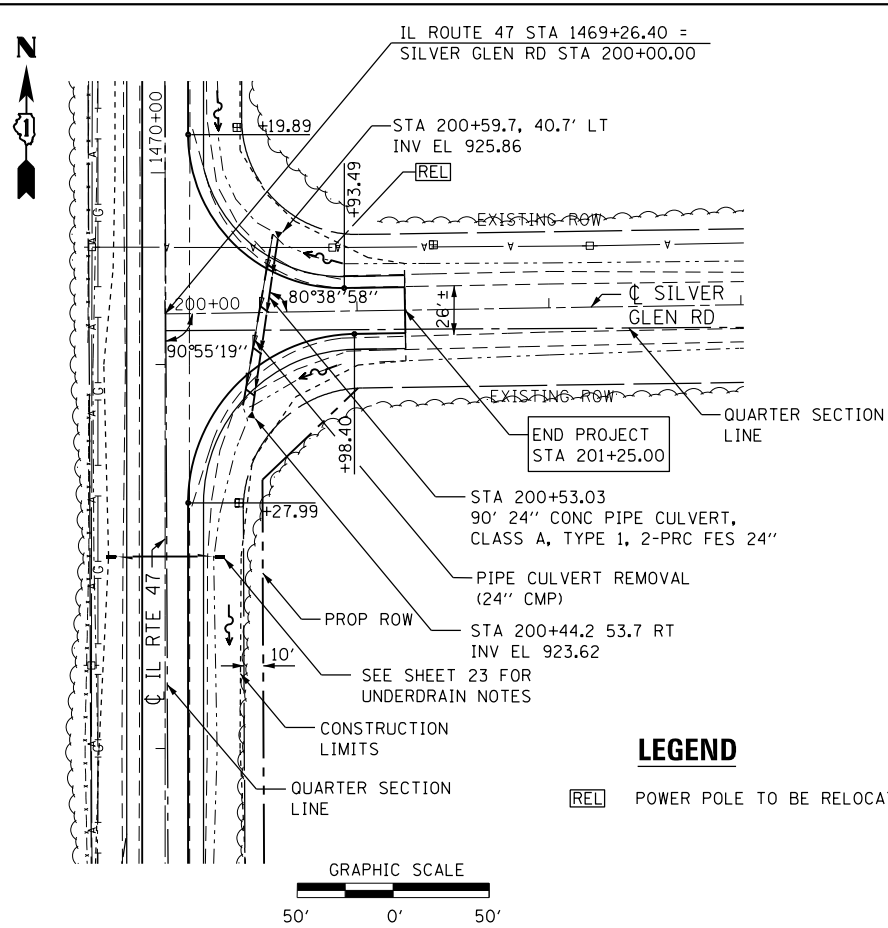


PLAN	SURVEYED	BY	DATE
	PLOTTED		
	ALIGNED		
	CHECKED		
	FILED		
	CARD FILE NAME		
	NO.		

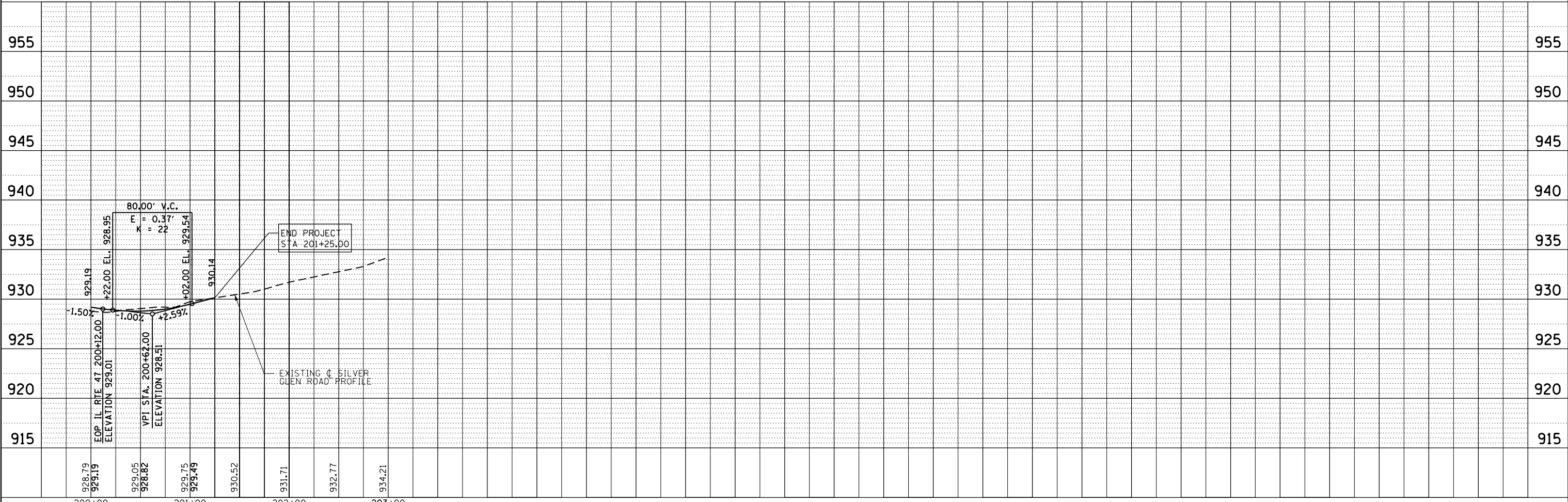
PROFILE	SURVEYED	BY	DATE
	PLOTTED		
	GRADES CHECKED		
	STRUCTURE NOTATIONS CHECKED		
	NO.		

FILE NAME = D:\60N13-ht-drain-uti103.dgn
 MODEL DRIVER = V81.PDF_11x17.pltcf9



LEGEND
 [REL] POWER POLE TO BE RELOCATED BY OTHERS

UTILITY NOTES:
 1. EXISTING OVERHEAD COM ED ELECTRICAL LINES ARE LOCATED ALONG IL 47 APPROXIMATELY 37' LEFT OF ϕ AND CROSS IL 47 AT STATION 1469+61 \pm
 2. AN EXISTING 4" NICOR GAS LINE IS LOCATED ALONG IL 47 APPROXIMATELY 35' LEFT OF ϕ AT A DEPTH OF 3' \pm .



USER NAME = mmann	DESIGNED - MCV	REVISED -
	DRAWN - CMM	REVISED -
PLOT SCALE = 100.0000' / 1"	CHECKED - MTM	REVISED -
PLOT DATE = 10/24/2012	DATE - 10/12	REVISED -

**STATE OF ILLINOIS
 DEPARTMENT OF TRANSPORTATION**

**SILVER GLEN RD
 DRAINAGE AND UTILITY PLAN**

SCALE: 1"=50' SHEET NO. 3 OF 3 SHEETS STA. 200+00 TO STA. 230+00

F.A.P. RTE.	SECTION	COUNTY	TOTAL SHEETS	SHEET NO.
326	106X-B	KANE	87	28
CONTRACT NO. 60N13				
ILLINOIS FED. AID PROJECT				