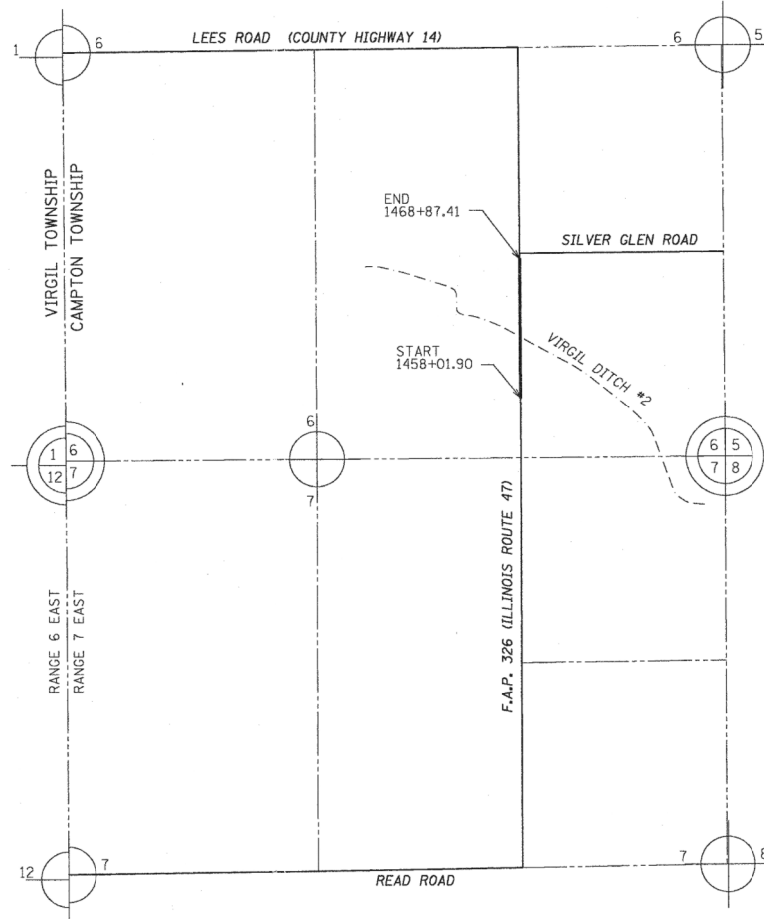
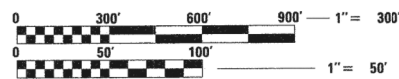


**STATE OF ILLINOIS
DEPARTMENT OF TRANSPORTATION
RIGHT OF WAY PLANS
FOR PROPOSED
FEDERAL AID HIGHWAY**

**ROUTE: F.A.P. 326 (IL ROUTE 47)
SECTION: OVER VIRGIL DITCH #2
AT SILVER GLEN ROAD
PROJECT NO.:
JOB NO.: R-91-012-11
COUNTY: KANE
LIMITS: 1458 + 01.90 TO 1468 + 87.41**



PROJECT LENGTH: 1047 LINEAL FEET (0.198 MILES), IL RTE 47



FULL SIZE PLANS HAVE BEEN PREPARED USING STANDARD ENGINEERING SCALES. REDUCED SIZED PLANS WILL NOT CONFORM TO STANDARD SCALES. IN MAKING MEASUREMENTS ON REDUCED PLANS, THE ABOVE SCALES MAY BE USED.

| | | | | |
|---------------------|----------------------|--------------|--------------|-----------|
| F.A. RTE. | SECTION | COUNTY | TOTAL SHEETS | SHEET NO. |
| 326 | OVER VIRGIL DITCH #2 | KANE | 4 | 1 |
| FED. ROAD DIST. NO. | ILLINOIS | CONTRACT NO. | | |



LOCATION OF SECTION INDICATED THUS: —

**STATE OF ILLINOIS
DEPARTMENT OF TRANSPORTATION
DIVISION OF HIGHWAYS**

| | | |
|-----------|----------------|--|
| SUBMITTED | _____ 20 _____ | _____ |
| | | DISTRICT ENGINEER |
| EXAMINED | _____ 20 _____ | _____ |
| | | DISTRICT RIGHT OF WAY PLANS ENGINEER |
| PASSED | _____ 20 _____ | _____ |
| | | DISTRICT LAND ACQUISITION ENGINEER |
| REVIEWED | _____ 20 _____ | _____ |
| | | CENTRAL BUREAU RIGHT OF WAY PLANS ENGINEER |
| APPROVED | _____ 20 _____ | _____ |
| | | ENGINEER OF LAND ACQUISITION |

RECEIVED
OCT 16 2012
PLATS & LEGALS

Mackie Consultants, LLC
9575 W. Higgins Road, Suite 500
Rosemont, IL 60018
(847)696-1400
www.mackieconsult.com

FILE NAME = D:\6813-shr-rep\plan\dgn
MODEL = Default
PLOT DRIVER = V8i_PDF_L1x17.pltcf9

10/16/2012 10:09:28 AM
n:\957\Survey\Exhibit\957-Plat of Highway.dgn



| | | |
|-----------------------------|------------|-----------|
| USER NAME = mmann | DESIGNED - | REVISED - |
| | DRAWN - | REVISED - |
| PLOT SCALE = 100.0000' / 1" | CHECKED - | REVISED - |
| PLOT DATE = 10/24/2012 | DATE - | REVISED - |

**STATE OF ILLINOIS
DEPARTMENT OF TRANSPORTATION**

**IL ROUTE 47 OVER VIRGIL DITCH #2
RIGHT OF WAY PLAN**

SCALE: N.T.S. SHEET NO. 1 OF 4 SHEETS STA. TO STA.

| | | | | |
|---------------------------|---------|--------|--------------------|-----------|
| F.A.P. RTE. | SECTION | COUNTY | TOTAL SHEETS | SHEET NO. |
| 326 | 106X-B | KANE | 87 | 29 |
| | | | CONTRACT NO. 60N13 | |
| ILLINOIS FED. AID PROJECT | | | | |