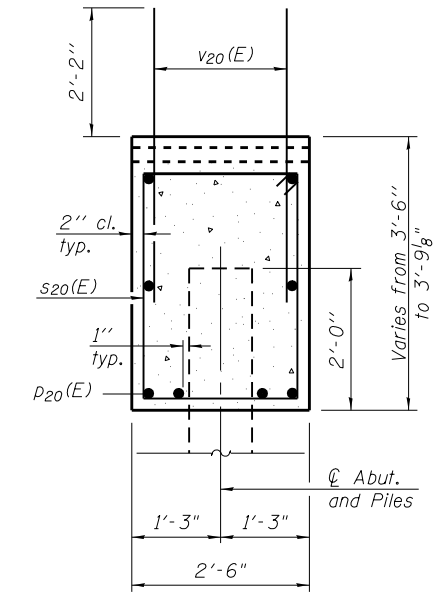
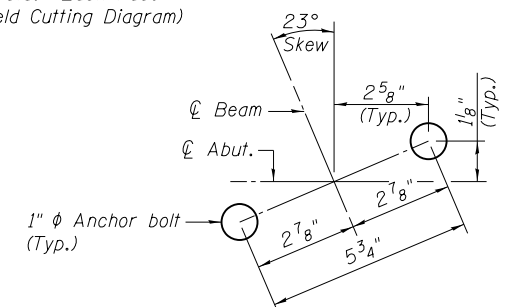


Notes:
 Pour steps monolithically with cap.
 Space reinforcement to miss anchor bolts.

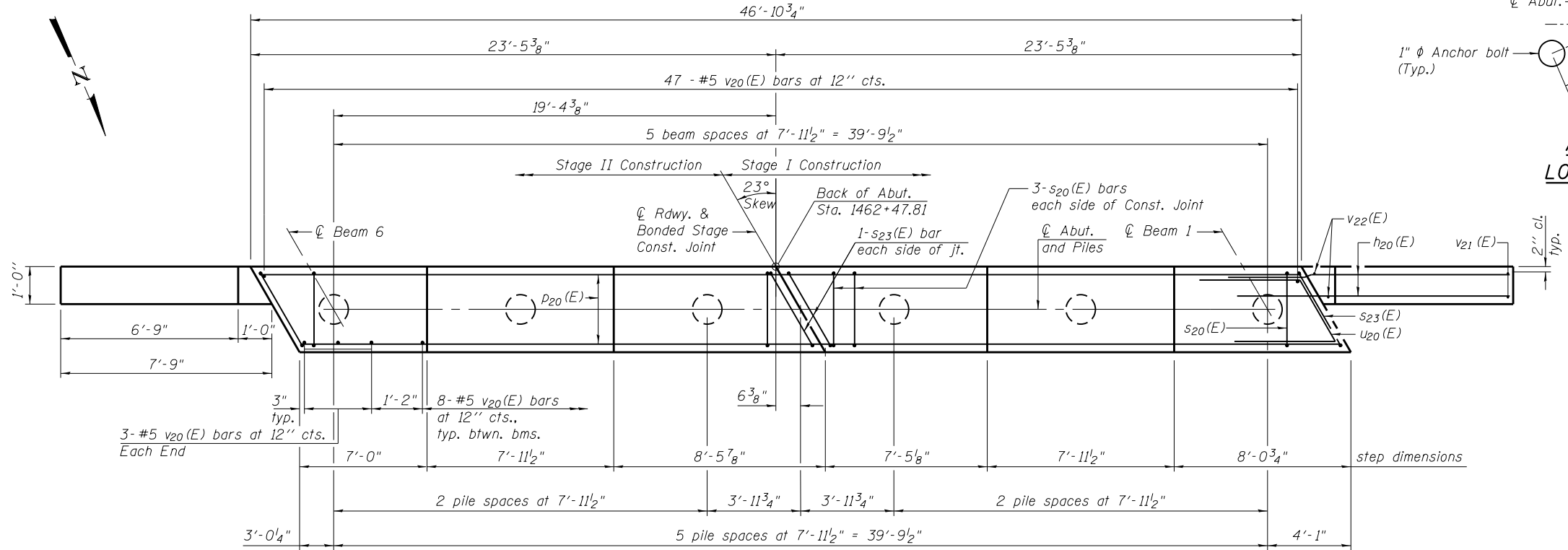
ELEVATION AT SOUTH ABUTMENT
 (Looking South)



SEC. THRU ABUT.
 (Dimensions at right angles to abut.)



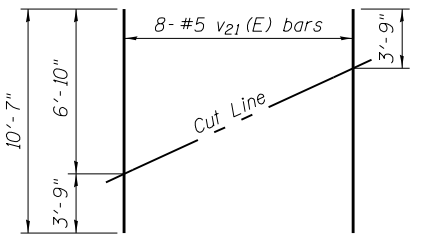
ANCHOR BOLT LOCATION DETAIL



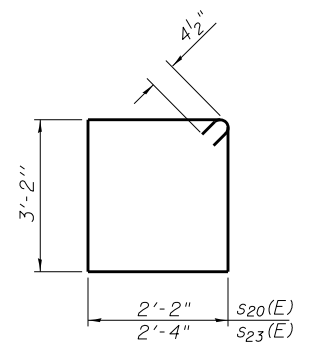
PLAN

PILE DATA

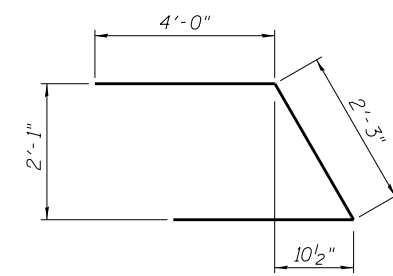
Type: 12" Metal Shell Piles with 0.25" walls
 Nominal Required Bearing: 353 Kips
 Factored Resistance Available: 194 Kips
 Est. Length: 55'
 No. Production Piles: 5
 No. Test Piles: 1



FIELD CUTTING DIAGRAM
 Order v21(E) full length. Cut as shown and use remainder of bars in opposite face.



BARS s20(E) & s23(E)



BAR u20(E)

BILL OF MATERIAL

Bar	No.	Size	Length	Shape
h20(E)	44	#6	10'-6"	—
p20(E)	16	#7	23'-1"	—
s20(E)	36	#4	11'-5"	□
s23(E)	4	#4	11'-9"	□
u20(E)	8	#6	10'-3"	∩
v20(E)	93	#5	4'-4"	—
v21(E)	16	#5	10'-7"	—
v22(E)	4	#5	6'-10"	—
Structure Excavation		Cu. Yd.	24.5	
Concrete Structures		Cu. Yd.	19.1	
Reinforcement Bars, Epoxy Coated		Pound	2,500	
Furnishing Metal Shell Piles 12" x .25"		Foot	275	
Driving Piles		Foot	275	
Test Pile, Metal Shells		Each	1	

For details of Bar Splicers, see sheet 18 of 22.
 For details of piles, see sheet 17 of 22.

AI-L 7-1-10



USER NAME =	DESIGNED - RJP	REVISED
PLOT SCALE =	CHECKED - MJT	REVISED
PLOT DATE =	DRAWN - JTF	REVISED
	CHECKED - MJT	REVISED

STATE OF ILLINOIS
 DEPARTMENT OF TRANSPORTATION

SOUTH ABUTMENT
 STRUCTURE NO. 045-0078

SHEET NO. 15 OF 22 SHEETS

F.A.P. RTE.	SECTION	COUNTY	TOTAL SHEETS	SHEET NO.
326	106X-B	KANE	87	53
ILLINOIS FED. AID PROJECT			CONTRACT NO. 60N13	