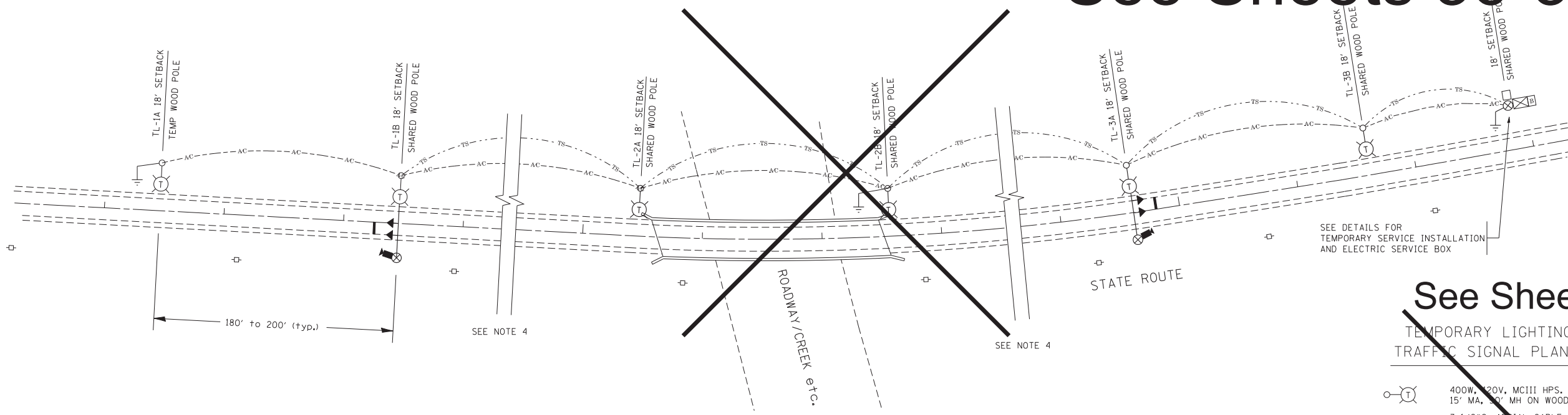
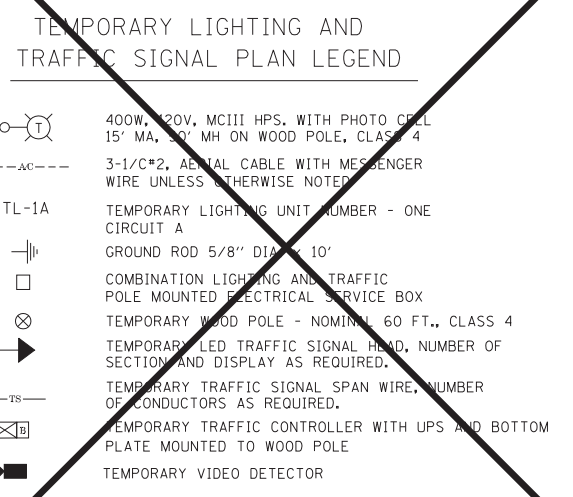


See Sheets 36-38



TYPICAL LAYOUT FOR TEMPORARY LIGHTING AND TRAFFIC SIGNALS
NOT TO SCALE

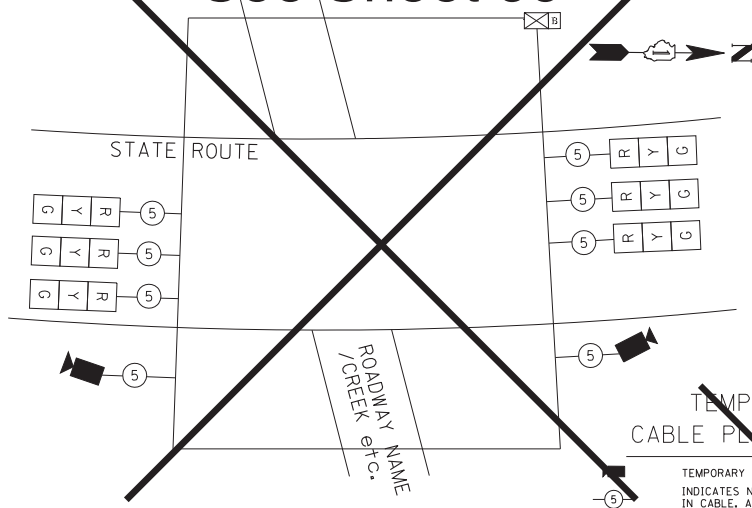
See Sheets 35-38



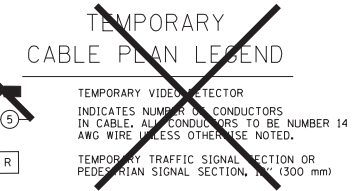
GENERAL NOTES:

- 1) ~~See Sheets 36-38~~
NOTES FOR LIGHTING - NOTE 1
CONSTRUCTION SHALL BE INITIATED BEFORE THE PRECONSTRUCTION MEETING AND DOCUMENTATION OF CONTACT SHALL BE PRESENTED AT THAT MEETING. NO FIELD CHANGES SHALL BE MADE WITHOUT THE WRITTEN CONSENT OF A SIGNED AGREEMENT WITH THE ELECTRIC UTILITY, FURNISHED TO THE ENGINEER.
- 2) ~~See Sheets 36-38~~
NOTES FOR LIGHTING - NOTE 2
UNLESS OTHERWISE INDICATED, AND EXCEPT AS OTHERWISE NOTED, THIS STANDARDIZED LAYOUT SHALL APPLY FOR BRIDGES NOT EXCEEDING A 250-FOOT SPAN. FOR BRIDGE SPANS IN EXCESS OF 250 FEET, THE POLES IMMEDIATELY ADJACENT TO THE BRIDGE SHALL BE 100-FOOT POLES (90-FOOT MOUNTING HEIGHT) WITH 750-WATT TYPE III HIGH PRESSURE SODIUM HIGH-MAST LUMINAIRES AS APPROVED BY THE ENGINEER.
- 3) ~~See Sheets 36-38~~
NOTES FOR LIGHTING - NOTE 3
THE LAYOUT OF THE TEMPORARY EQUIPMENT WILL VARY BASED ON FIELD CONDITIONS, STAGING, UTILITY IMPACTS, AND THE ELECTRIC SERVICE LOCATION AS COORDINATED WITH THE ELECTRIC UTILITY. THE CONTRACTOR SHALL SUBMIT A PLAN INDICATING THE SETTING OF POLES, TRAFFIC SIGNALS, AND COMBINED SERVICE. THIS PLAN MUST BE APPROVED BY THE ENGINEER BEFORE ANY POLES ARE PLACED.
- 4) ~~See Sheets 36-38~~
NOTES FOR LIGHTING - NOTE 4
TEMPORARY TRAFFIC SIGNALS SHALL BE 120V. WHERE 240V SERVICE IS NOT AVAILABLE, THE CONTRACTOR MAY SUBMIT A PROPOSAL FOR 120V SERVICE, DROP CABLE, MAIN BREAKER, AND OTHER ELECTRICAL SERVICE ELEMENTS. ALL ELECTRICAL SERVICE SHALL BE APPROPRIATELY RATED AND INCLUDED REGARDLESS OF THE SERVICE VOLTAGE APPLIED.
- 5) ~~See Sheets 36-38~~
NOTES FOR LIGHTING - NOTE 5
THE TEMPORARY LIGHTING AND TRAFFIC SIGNAL INSTALLATION SHALL SHARE ANY COMMON ELEMENTS SUCH AS WOOD POLES, ELECTRICAL SERVICE, ELECTRIC SERVICE BOX, CABLE, ETC. THE CONTRACTOR SHALL COORDINATE TEMPORARY LIGHTING AND TRAFFIC SIGNAL INSTALLATIONS.
- 6) ~~See Sheets 36-38~~
NOTES FOR LIGHTING - NOTE 6
THE POLES SHALL BE INSTALLED 18 FEET FROM THE EDGE OF TRAVEL PAVEMENT SHALL BE 18 FT. UNLESS THE LIGHT POLE IS BEHIND GUARDRAIL. THE LIGHT POLES INSTALLED BEHIND THE GUARDRAIL OR BEHIND THE SHOULDER SHALL BE INSTALLED AT THE BACK OF THE SHOULDER AND OR AS DIRECTED BY THE ENGINEER.
- 7) ~~See Sheets 36-38~~
NOTES FOR LIGHTING - NOTE 7
TEMPORARY TRAFFIC SIGNALS SHALL BE CONTROLLED BY A PHOTO CELL MOUNTED ON EACH LUMINAIRE WITH THE LIGHTING CIRCUIT FED FROM THE TEMPORARY SERVICE DISCONNECT BOX. OTHER ELECTRICAL SERVICE SHALL BE AS APPROVED BY THE ENGINEER.
- 8) ~~See Sheets 36-38~~
NOTES FOR LIGHTING - NOTE 8
TEMPORARY TRAFFIC SIGNALS SHALL BE INSTALLED AT THE LIGHT POLE USING HEAT SHRINKABLE CAPS WITH THE FACTORY APPLIED WATERPROOF SEALANT OR AN APPROVED UL LISTED AERIAL TRAFFIC SIGNAL SECTION OR PEDESTRIAN SIGNAL SECTION, 1300 mm.
9. ALL AREAS DISTURBED UNDER THIS CONTRACT SHALL BE RESTORED TO THE ORIGINAL CONDITION OR BETTER, TO THE SATISFACTION OF THE ENGINEER.

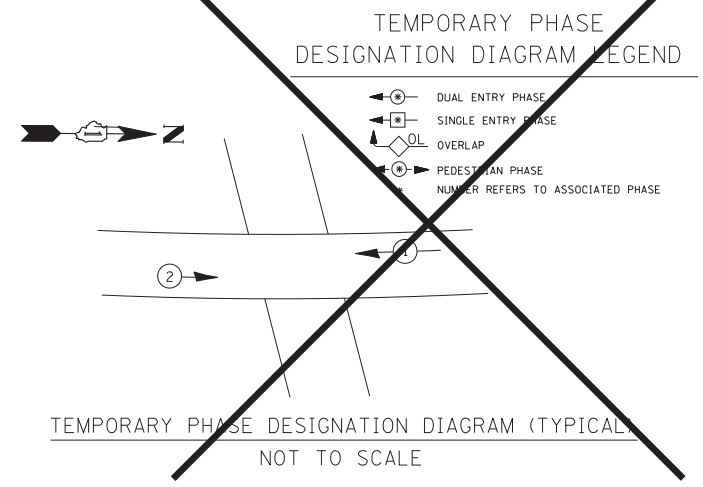
See Sheet 35



TEMPORARY CABLE PLAN (TYPICAL)
NOT TO SCALE



See Sheet 35



TEMPORARY PHASE DESIGNATION DIAGRAM (TYPICAL)
NOT TO SCALE

FILE NAME = c:\pwwork\pwwork\BAUBRD\10108315\be805.dgn	USBR NAME = bauerdl DESIGNED - MP DRAWN - PLOT SCALB = 50.000 ' / IN. PLOT DATB = 1/14/2010	REVISIONS REVISIONS REVISIONS REVISIONS	STATE OF ILLINOIS DEPARTMENT OF TRANSPORTATION	TEMPORARY LIGHTING AND TRAFFIC SIGNALS FOR SINGLE LANE STAGING			F.A.P. R.T.E. = 326 SECTION = 106X-B COUNTY = KANE TOTAL SHEETS = 87 SHEET NO. = 64
	SCALE: NONE SHEET NO. 1 OF 3 SHEETS STA. TO STA.			BE-805 CONTRACT NO. 60N13			
	FED. ROAD DIST. NO. 1 ILLINOIS FED. AID PROJECT						