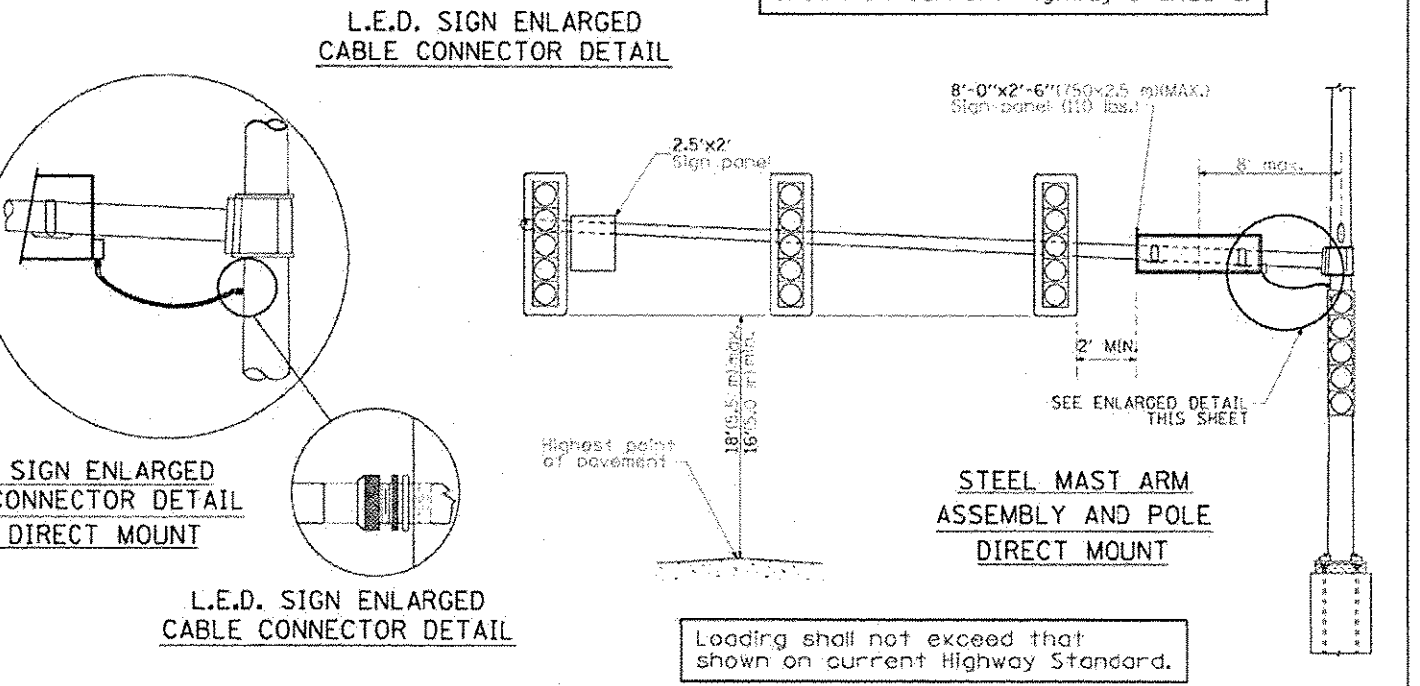
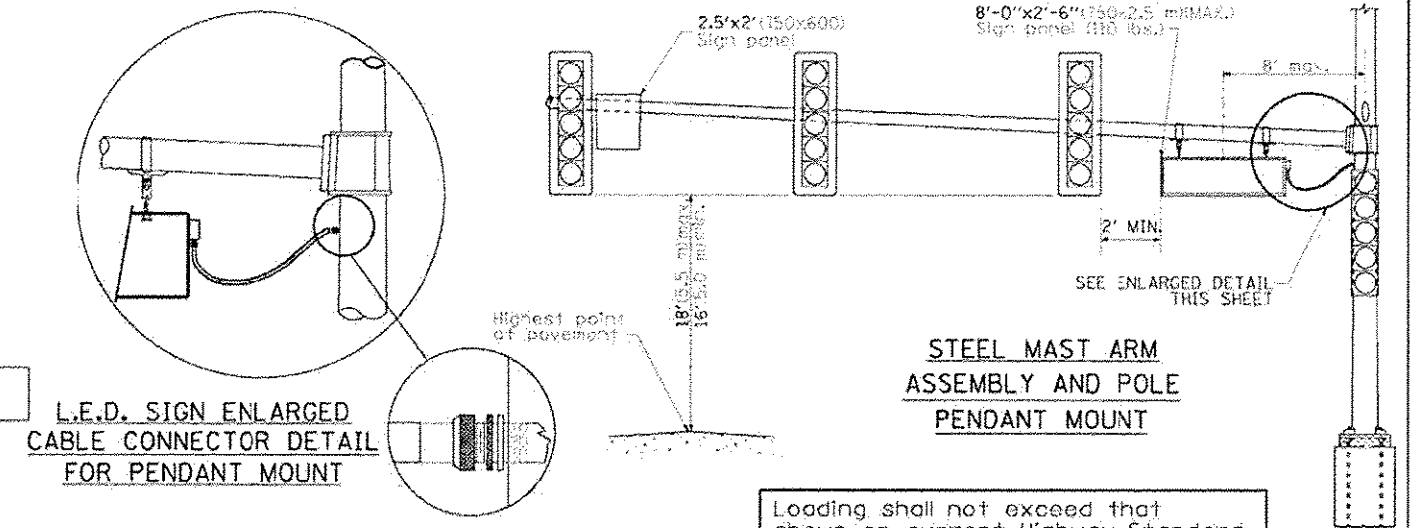
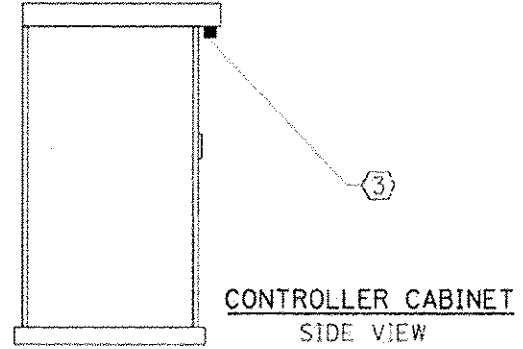


LED SIGN WIRING DETAIL

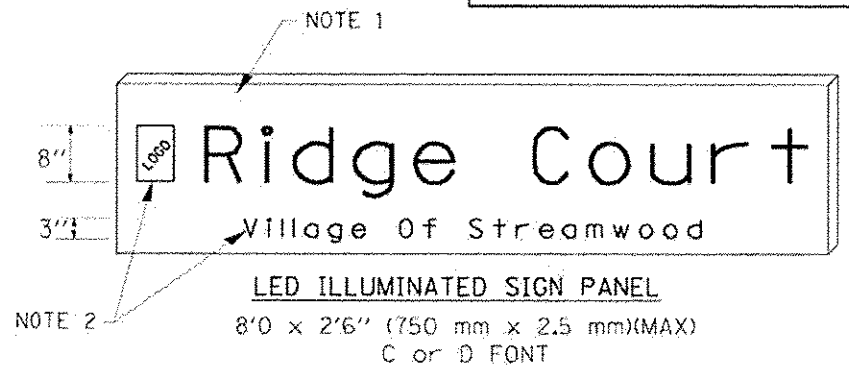
BILL OF MATERIALS

DESCRIPTION	MANUFACTURER	MODEL	NOTES
① CIRCUIT BREAKER		15 AMPERE	Molded case, thermal Mag. min. R.I. of 14K R.M.S. symmetrical ampere at 277V.
② TERMINAL BLOCK	MARATHON	1502 DJSV	
③ PHOTO ELECTRIC CONTROL	FISHER PIERCE	B124-15-07762	
④ CONTROL RELAY	SQUARE D	8501X020V02	BOLT ON W/SCREW TERMINAL
⑤ IN-LINE FUSE HOLDER WITH 5 AMP FUSE	BUSSMAN	S-8000 BK/S-8-3-4-R	
⑥ ELECTRIC CABLE, NO. 14, 3/C (BLACK, WHITE, GREEN)	CAROLPRENE/SQOW	02762	
⑦ SIGN MOUNTING HARDWARE	PELCO	Pendant (SE-5015) Direct mount (AB-0104-L-SP) Additional sign stiffeners may be required for direct mounted signs.	S.S. HARDWARE



L.E.D. SIGN ENLARGED CABLE CONNECTOR DETAIL FOR DIRECT MOUNT

L.E.D. SIGN ENLARGED CABLE CONNECTOR DETAIL



- NOTES:
- SIGNS SHALL BE SINGLE SIDED FOR DIRECT MOUNT AND DOUBLE SIDED FOR PENDANT MOUNT.
 - CERTAIN ADDITIONAL INFORMATION MAY BE ALLOWED ON THE SIGN. VERIFY WITH ENGINEER.
 - SIGNS SHALL NOT BE ENERGIZED WHEN TRAFFIC SIGNALS ARE POWERED BY THE UPS. THE SIGNS SHALL BE CONNECTED TO THE UPS BYPASS CIRCUITRY.
 - ALL WIRING WITHIN THE CABINET SHALL BE COLOR CODED AS INDICATED:
R = RED BL = BLUE W = WHITE
B = BLACK Y = YELLOW G = GREEN
 - ALL 120 VOLT SYSTEM AND ALL CONTROL WIRING SHALL BE #14AWG STRANDED UNLESS OTHERWISE INDICATED.
 - ALL WIRING SHALL BE NEATLY DRESSED AND SUPPORTED.