

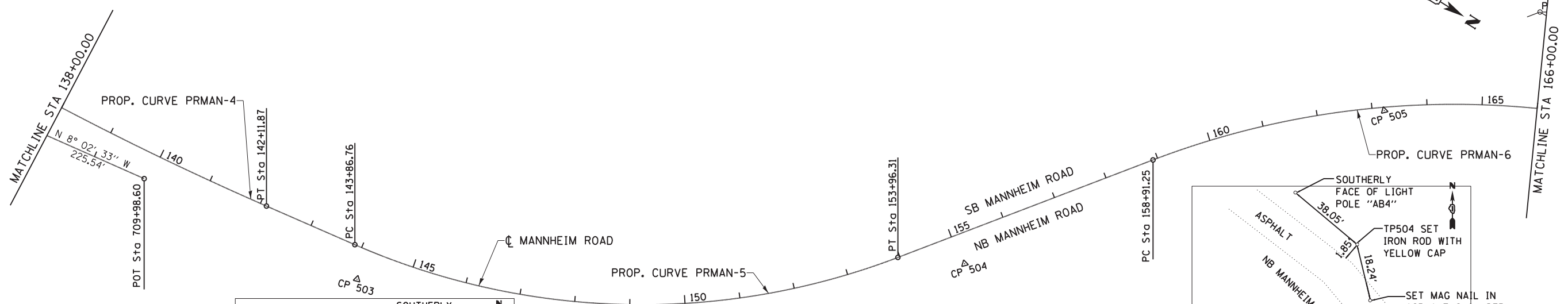
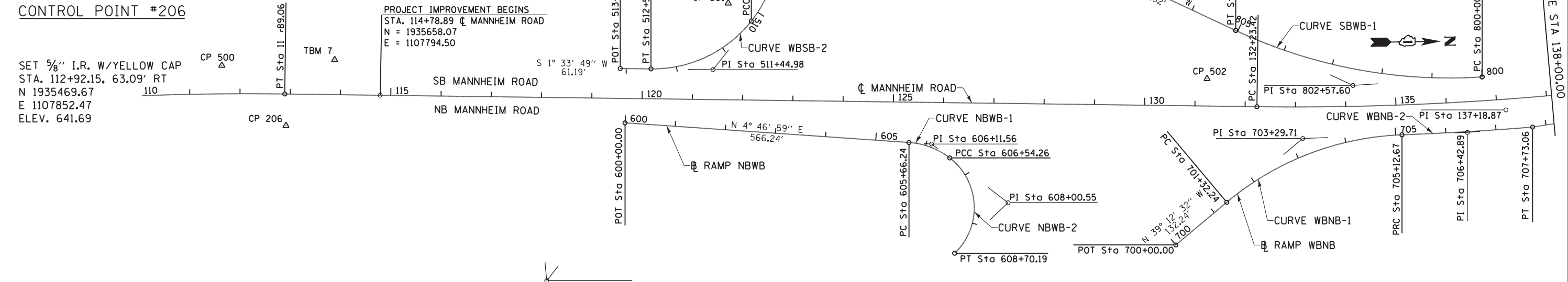
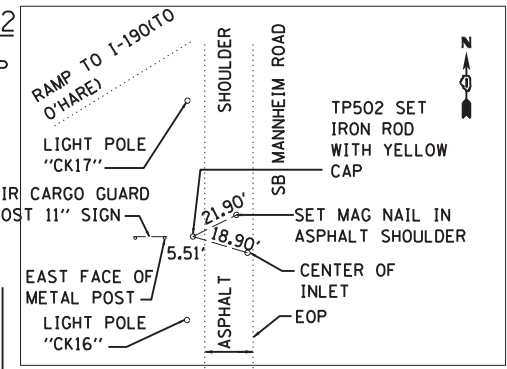
CONTROL POINT #206

SET 5/8" I.R. W/YELLOW CAP
 STA. 112+92.15, 63.09' RT
 N 1935469.67
 E 1107852.47
 ELEV. 641.69

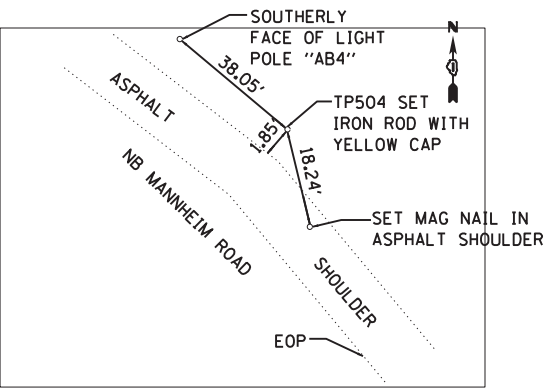
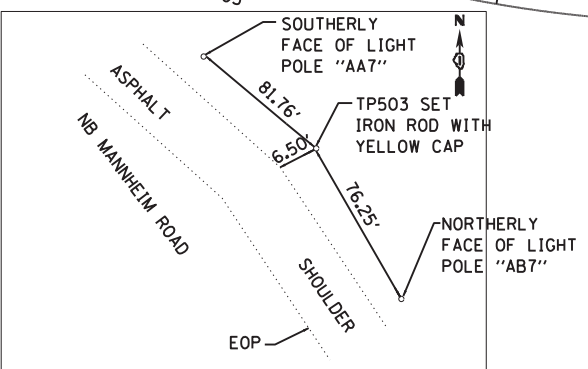
PROJECT IMPROVEMENT BEGINS
 STA. 114+78.89 @ MANNHEIM ROAD
 N = 1935658.07
 E = 1107794.50

CONTROL POINT #502

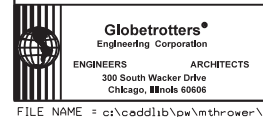
SET 5/8" I.R. W/YELLOW CAP
 STA. 131+23.45, 54.37' RT
 N 1937303.50
 E 1107785.02
 ELEV. 638.27



CONTROL POINT #503
 SET 5/8" I.R. W/YELLOW CAP
 STA. 144+14.15, 56.06' RT
 N 1938596.84
 E 1107809.65
 ELEV. 639.75



CONTROL POINT #504
 SET 5/8" I.R. W/YELLOW CAP
 STA. 155+05.18, 53.79' RT
 N 1939516.42
 E 1107203.35
 ELEV. 640.27



USER NAME = maurice.thrower	DESIGNED - MT	REVISED -
PLOT SCALE = 100.0000' / in.	DRAWN - MT	REVISED -
PLOT DATE = 10/5/2012	CHECKED - VT	REVISED -
	DATE - 10/19/2012	REVISED -

**STATE OF ILLINOIS
 DEPARTMENT OF TRANSPORTATION**

**ALIGNMENT, TIES & BENCHMARKS
 MANNHEIM ROAD**

SCALE: 1" = 100' SHEET NO. OF SHEETS STA. 112+89.06 TO STA. 166+00.00

F.A.P. RTE.	SECTION	COUNTY	TOTAL SHEETS	SHEET NO.
330	0105-WRS	COOK	537	53
CONTRACT NO. 60P35				
ILLINOIS FED. AID PROJECT				

FILE NAME = c:\cadd\lib\pw\thrower\p\great.lakes\dms47849\0160P35-sht-ATB1.dgn