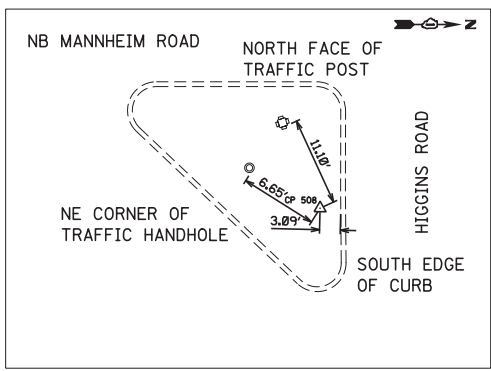


**CONTROL POINT #852**  
 CROSS CUT ON BACK OF CURB  
 STA. 496+00.54, 47.13' RT  
 N 1942334.35  
 E 1105849.16  
 ELEV. 639.20



**CONTROL POINT #508**  
 CROSS CUT ON CONCRETE  
 STA. 500+78.95, 47.58' RT  
 N 1942195.88  
 E 1106307.10  
 ELEV. 639.68

PROJECT IMPROVEMENT BEGINS  
 STA. 494+25.62, C Higgins Road  
 N = 1942429.75  
 E = 1105695.16

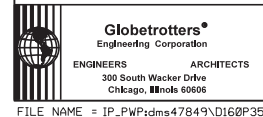
PROJECT IMPROVEMENT ENDS  
 STA. 505+88.06, C Higgins Road  
 N = 1942091.42  
 E = 1106807.26

PROJECT IMPROVEMENT ENDS  
 STA. 13+17.92, C Bessie Coleman Drive  
 N = 1940559.25  
 E = 1105939.94

PROJECT IMPROVEMENT ENDS  
 STA. 13+17.92, C Bessie Coleman Drive  
 N = 1941130.43  
 E = 1105938.27

PROJECT IMPROVEMENT ENDS  
 STA. 64+18.43, C Zemke Blvd. (East)  
 N = 1941079.43  
 E = 1106674.58

PROJECT IMPROVEMENT ENDS  
 STA. 196+00.59, C Mannheim Road  
 N = 1943224.23  
 E = 1106240.75



USER NAME = micosip	DESIGNED MT	REVISED -
	DRAWN MT	REVISED -
PLOT SCALE = 1/8"=1'	CHECKED VT	REVISED -
PLOT DATE = 23-OCT-2012	DATE 10/19/12	REVISED -

**STATE OF ILLINOIS  
 DEPARTMENT OF TRANSPORTATION**

**ALIGNMENT, TIES & BENCHMARKS  
 MANNHEIM ROAD**

SCALE: 1" = 100' SHEET NO. OF SHEETS STA. 166+00.00 TO STA. 200+31.82

F.A.P. RTE.	SECTION	COUNTY	TOTAL SHEETS	SHEET NO.
330	0105-WRS	COOK	537	54
CONTRACT NO. 60P35				
ILLINOIS FED. AID PROJECT				