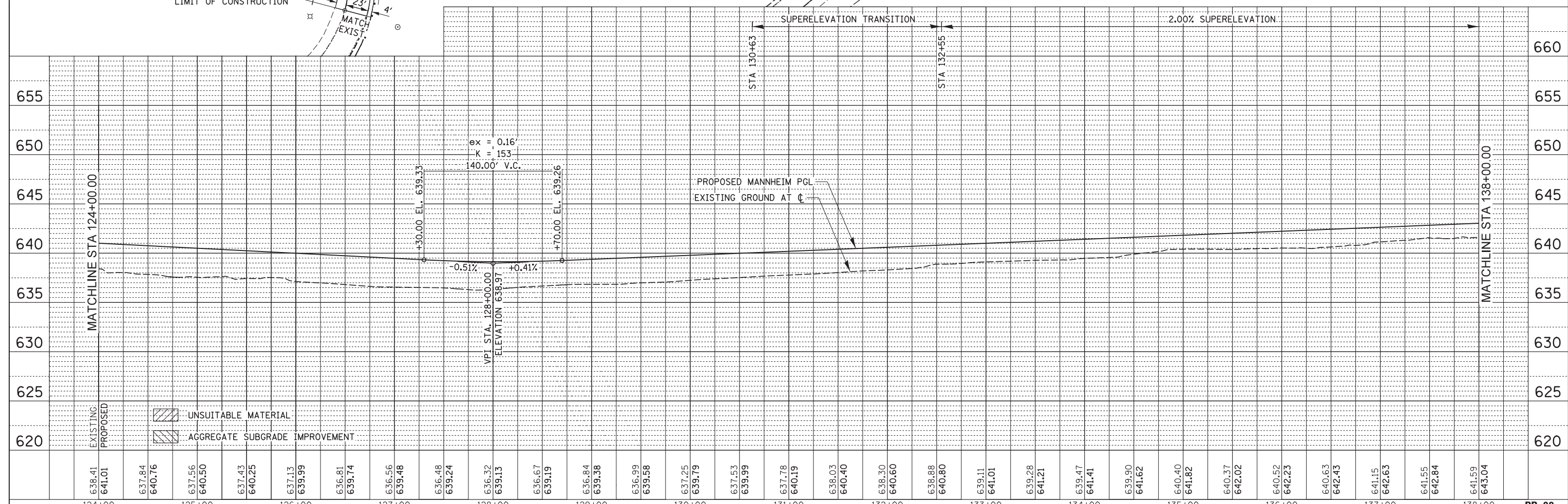
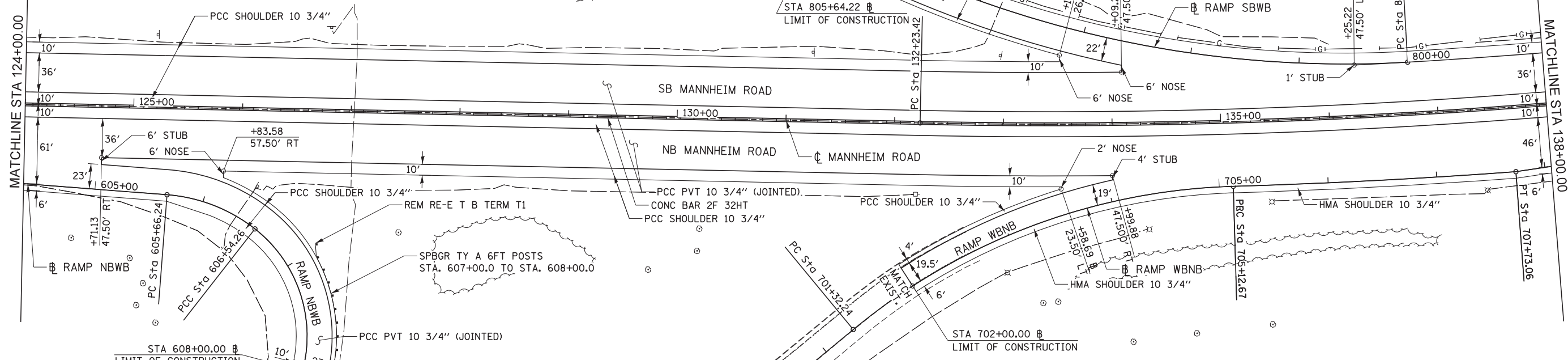


NOTES:

1. ALL STATIONS AND OFFSETS CORRESPOND TO MANNHEIM CENTERLINE AND ARE MEASURED FROM THE EDGE OF PAVEMENT UNLESS OTHERWISE NOTED.
2. ALL RADII FOR CURB AND GUTTER ARE TO THE EDGE OF PAVEMENT.
3. SEE PROPOSED DRAINAGE PLANS, OVERHEAD SIGNING PLANS, LANDSCAPING PLANS, TRAFFIC SIGNAL PLANS, AND LIGHTING PLANS FOR DRAINAGE STRUCTURE, PIPE, OVERHEAD SIGN, LANDSCAPING, TRAFFIC SIGNAL AND LIGHTING INFORMATION.
4. FOR ADDITIONAL DETAILS NOT SHOWN, SEE ROADWAY DETAIL SHEETS AND STANDARD DETAILS.
5. RAMP ALIGNMENTS AND CURVE INFORMATION ARE SHOWN ON THE ALIGNMENT AND TIE SHEETS.
6. RAMP PROFILES ARE SHOWN ON THE ROADWAY PROFILE SHEET PP-10.



PLAN	SURVEYED	DATE
	PLOTTED	
	ALIGNED	
	CHECKED	
	DESIGNED	
	BY	
	NO.	

PROFILE	SURVEYED	DATE
	PLOTTED	
	GRADES CHECKED	
	STRUCTURE	
	NOTATIONS CHKD	
	BY	
	NO.	



USER NAME = mkosir
DESIGNED LLS/MMK
DRAWN MMK
CHECKED LLS
DATE 10/19/12

REVISIONS
REVISED -
REVISED -
REVISED -
REVISED -

STATE OF ILLINOIS
DEPARTMENT OF TRANSPORTATION

PLAN AND PROFILE
MANNHEIM ROAD

SCALE: 1" = 50'
SHEET NO. 2 OF 10 SHEETS
STA. 124+00.00 TO STA. 138+00.00

F.A.P. RTE.	SECTION	COUNTY	TOTAL SHEETS	SHEET NO.
330	0105-WRS	COOK	537	61
CONTRACT NO. 60P35				