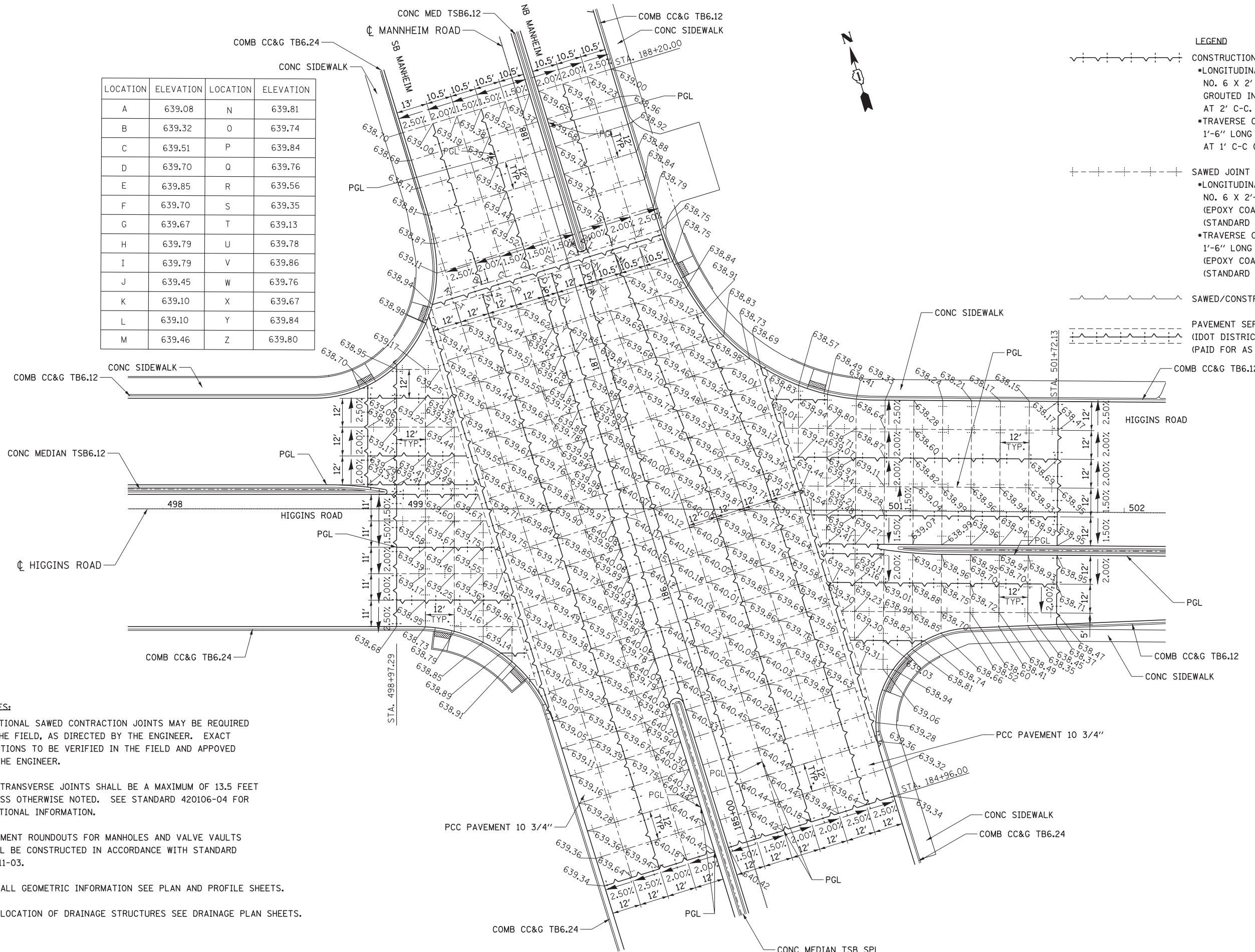
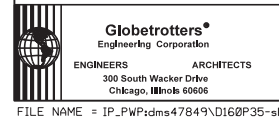


LOCATION	ELEVATION	LOCATION	ELEVATION
A	639.08	N	639.81
B	639.32	O	639.74
C	639.51	P	639.84
D	639.70	Q	639.76
E	639.85	R	639.56
F	639.70	S	639.35
G	639.67	T	639.13
H	639.79	U	639.78
I	639.79	V	639.86
J	639.45	W	639.76
K	639.10	X	639.67
L	639.10	Y	639.84
M	639.46	Z	639.80



- LEGEND**
- CONSTRUCTION JOINT
 - LONGITUDINAL CONSTRUCTION JOINT
NO. 6 X 2' LONG DEFORMED TIE BARS
GROUTED IN PLACE (EPOXY COATED)
AT 2' C-C. (STANDARD 420001-07)
 - TRAVERSE CONSTRUCTION JOINT
1'-6" LONG DOWEL BARS (EPOXY COATED)
AT 1' C-C (STANDARD 420106-04)
 - SAWED JOINT
 - LONGITUDINAL SAWED JOINT
NO. 6 X 2'-6" LONG DEFORMED TIE BARS
(EPOXY COATED) AT 2'-6" C-C.
(STANDARD 420001-07)
 - TRAVERSE CONTRACTION JOINT
1'-6" LONG DOWEL BARS
(EPOXY COATED) AT 1' C-C
(STANDARD 420001-07)
 - SAWED/CONSTRUCTION JOINT WITHOUT BARS
 - PAVEMENT SEPARATION JOINT
(IDOT DISTRICT 1 STANDARD DETAIL BD52)
(PAID FOR AS SLEEPER SLAB)

- NOTES:**
1. ADDITIONAL SAWED CONTRACTION JOINTS MAY BE REQUIRED IN THE FIELD, AS DIRECTED BY THE ENGINEER. EXACT LOCATIONS TO BE VERIFIED IN THE FIELD AND APPROVED BY THE ENGINEER.
 2. ALL TRANSVERSE JOINTS SHALL BE A MAXIMUM OF 13.5 FEET UNLESS OTHERWISE NOTED. SEE STANDARD 420106-04 FOR ADDITIONAL INFORMATION.
 3. PAVEMENT ROUNDOUTS FOR MANHOLES AND VALVE VAULTS SHALL BE CONSTRUCTED IN ACCORDANCE WITH STANDARD 420111-03.
 4. FOR ALL GEOMETRIC INFORMATION SEE PLAN AND PROFILE SHEETS.
 5. FOR LOCATION OF DRAINAGE STRUCTURES SEE DRAINAGE PLAN SHEETS.



USER NAME = mikosir
 PLOT SCALE = 20:1
 PLOT DATE = 23-OCT-2012

DESIGNED MT
 DRAWN MT
 CHECKED VT
 DATE 10/19/12

REVISED -
 REVISED -
 REVISED -
 REVISED -

**STATE OF ILLINOIS
 DEPARTMENT OF TRANSPORTATION**

**PAVEMENT JOINTING PLAN
 HIGGINS ROAD**
 SCALE: 1" = 20'
 SHEET NO. 4 OF 5 SHEETS
 STA. TO STA.

F.A.P. RTE.	SECTION	COUNTY	TOTAL SHEETS	SHEET NO.
330	0105-WRS	COOK	537	80
CONTRACT NO. 60P35				
ILLINOIS FED. AID PROJECT				