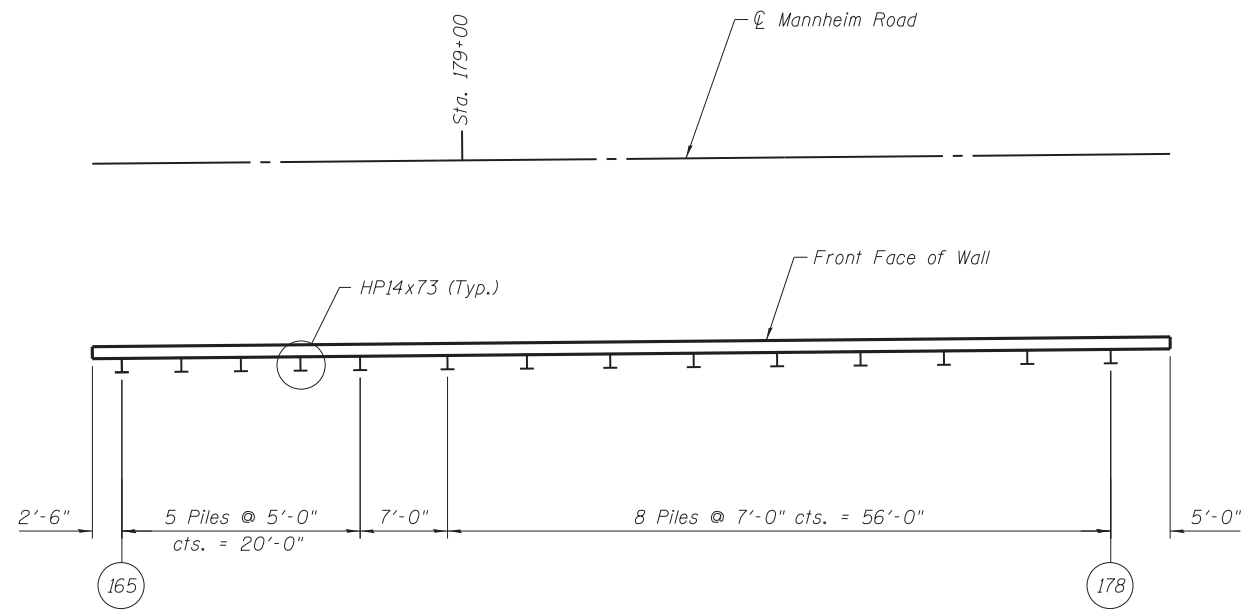
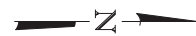
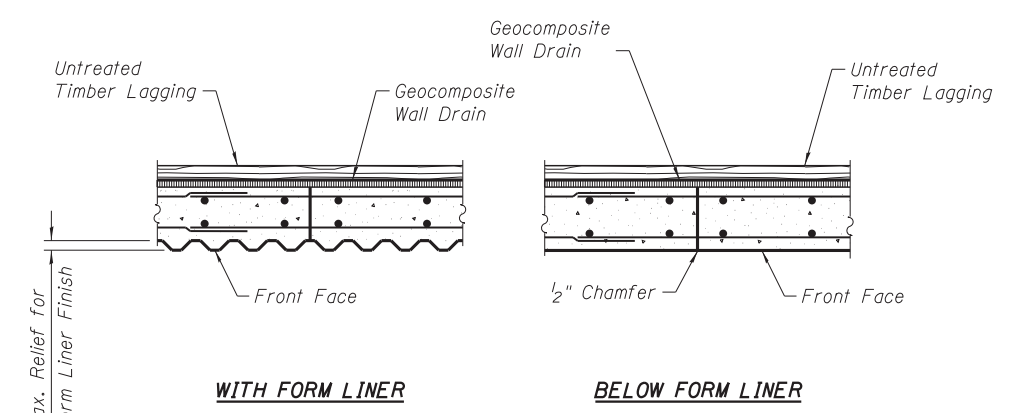


**ELEVATION**

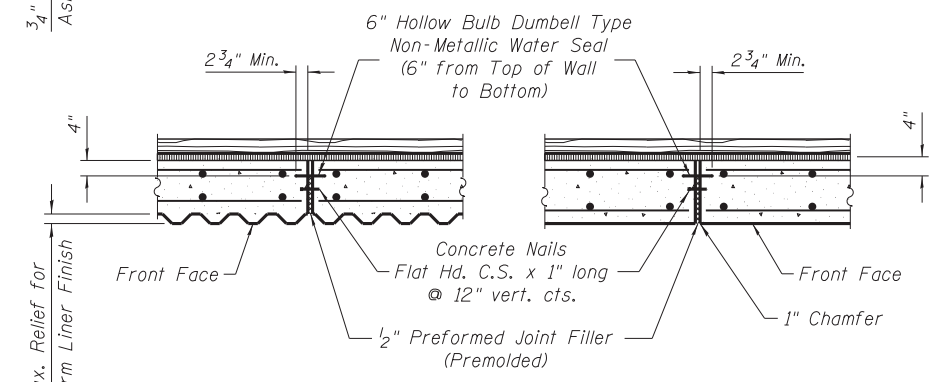
Minimum lap for #5 h bars shall be 2'-7".



**PLAN**



**SECTION A-A**  
(Construction Joint)



**SECTION B-B**  
(Expansion Joint)

Cost of Preformed Joint Filler, Water Seal and Concrete Nails shall be included in cost for Concrete Structures.

NOTES:  
See Sheet 1 of 10 for Station and Offset Locations of Front Face of Wall.

C:\caddlib\pw\ssstegman\pwwg\eat\_lakes\dms47849\016-2009-60P35-05-P&E\_03.dgn



USER NAME =	DESIGNED - SEA	REVISED
PLOT SCALE =	CHECKED - CJE	REVISED
PLOT DATE = 10/19/2012	DRAWN - SCS	REVISED
	CHECKED - SEA	REVISED

STATE OF ILLINOIS  
DEPARTMENT OF TRANSPORTATION

PLAN AND ELEVATION  
STRUCTURE NO. 016-2009

SHEET NO. 5 OF 10 SHEETS

F.A.P. RTE. 330	SECTION 0105-WRS	COUNTY COOK	TOTAL SHEETS 537	SHEET NO. 304
				CONTRACT NO. 60P35
ILLINOIS FED. AID PROJECT				