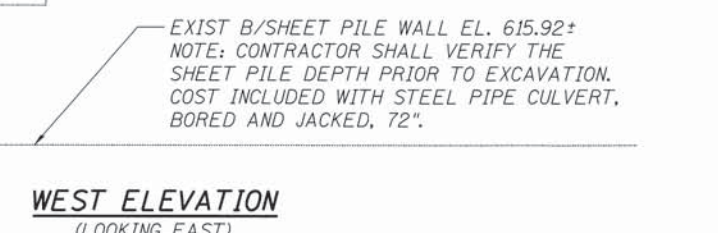
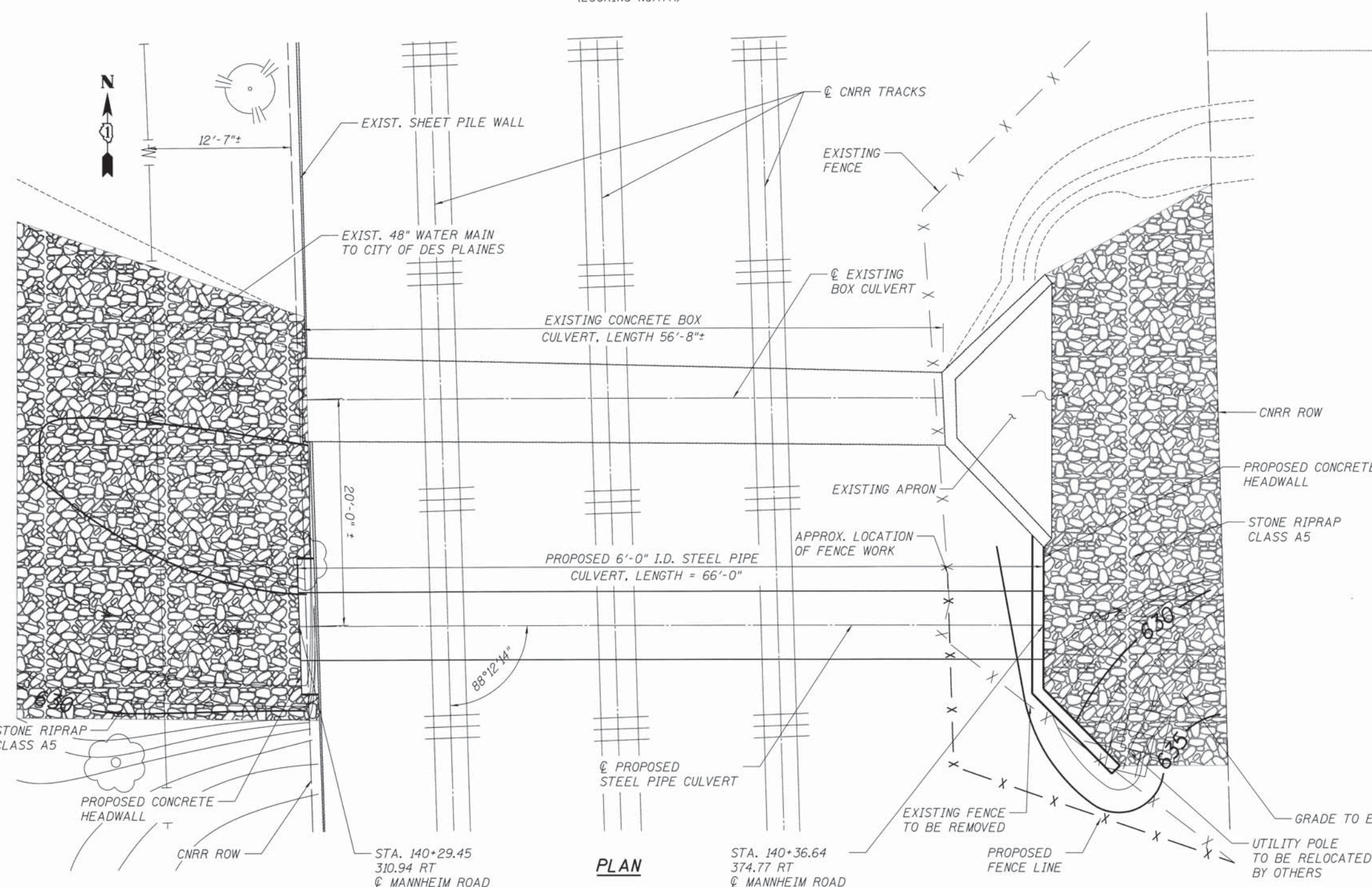
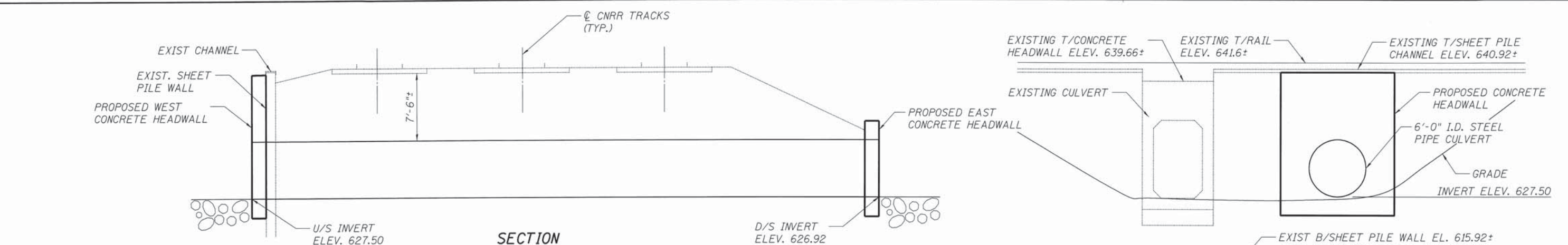


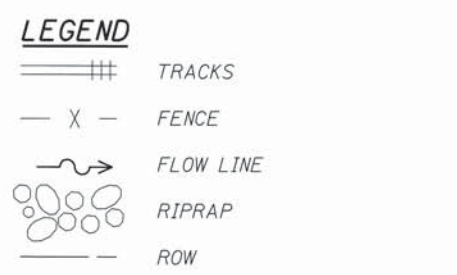
\\0166P35-TOPLOC.DGN, \\0166P35-BORDET.DGN, \\0166P35-SUE.DGN, \\0166P35-30-SURVEY.DGN, \\0166P35-REMOVALS.DGN, \\0166P35-2D-SURVEY.DGN, \\CP-UTILITIES - PHASE I - NESTED REFERENCE.DGN, \\0166P35-DRAINING.DGN, \\0166P35-URBAN
 10-31-2012, 05:56:23 BAUZEKJ F:\DDC\EXP\CH\20012584-82\COMMON\SET\TEMP\SET\PILOT\0166P35-SHT-CNRR.DGN



TOTAL BILL OF MATERIAL

| ITEM | UNIT | TOTAL |
|-------------------------------------|-------|-------|
| STONE RIPRAP, CLASS A5 | SQ YD | 190 |
| CONCRETE STRUCTURES | CU YD | 18.1 |
| STUD SHEAR CONNECTORS | EACH | 184 |
| REINFORCEMENT BARS, EPOXY COATED | POUND | 6,080 |
| CHAIN LINK FENCE (SPECIAL) | FOOT | 44 |
| CHAIN LINK FENCE REMOVAL | FOOT | 39 |
| GROUT SOIL MIXING | CU FT | 2,772 |
| PIPE CULVERTS, CLASS C 72" (JACKED) | FOOT | 66 |
| | | |
| | | |

DESIGN STRESSES
 $f'_c = 3,500 \text{ psi}$
 $f_y = 36,000 \text{ psi (M270, GRADE 36)}$
 $f_y = 60,000 \text{ psi (REINFORCEMENT)}$



| | | | |
|-------------|----------------------|-----------------|-----------|
| FILE NAME = | USER NAME = #USER# | DESIGNED - TCG | REVISED - |
| #FILE# | | DRAWN - TCG | REVISED - |
| | PLOT SCALE = #SCALE# | CHECKED - TMH | REVISED - |
| | PLOT DATE = #DATE# | DATE - 10/19/12 | REVISED - |

STATE OF ILLINOIS
DEPARTMENT OF TRANSPORTATION

PROPOSED CULVERT UNDER CNRR
GENERAL PLAN
 SCALE: 3/8"=1'-0" SHEET NO. OF SHEETS STA. TO STA.

| | | | | |
|---------------------------|----------|--------|--------------------|-----------|
| F.A. RTE. | SECTION | COUNTY | TOTAL SHEETS | SHEET NO. |
| | 0105-WRS | COOK | 537 | 328 |
| | | | CONTRACT NO. 60P35 | |
| ILLINOIS FED. AID PROJECT | | | | |

CLV-01