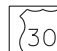




ROUTE MARKERS

 FOR U.S. ROUTES
M1-40-2424

 FOR ILLINOIS ROUTES
M1-50-2424

 R.R. UNMARKED ROUTES
SPECIAL 24" x 18" VARIABLE
4" BLACK LETTERS ON WHITE
REFLECTIVE BACKGROUND

ARROWS SIGNS

 M5-1L-2115

 M5-1R-2115

 M6-1-2115

 M6-1-2115

 M6-3-2115

CARDINAL DIRECTION & DETOUR SIGNS

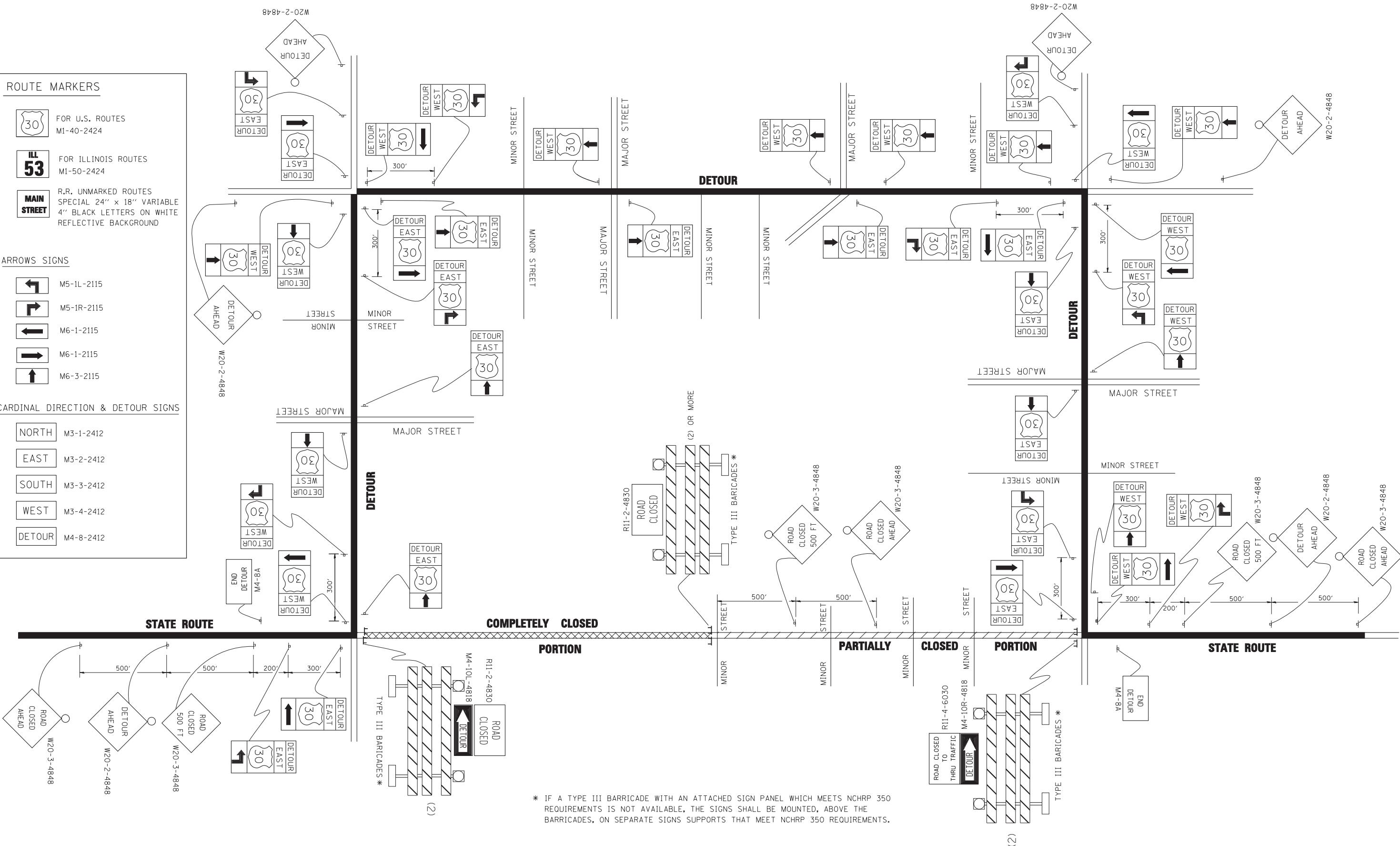
 NORTH M3-1-2412

 EAST M3-2-2412

 SOUTH M3-3-2412

 WEST M3-4-2412

 DETOUR M4-8-2412



* IF A TYPE III BARRICADE WITH AN ATTACHED SIGN PANEL WHICH MEETS NCHRP 350 REQUIREMENTS IS NOT AVAILABLE, THE SIGNS SHALL BE MOUNTED, ABOVE THE BARRICADES, ON SEPARATE SIGNS SUPPORTS THAT MEET NCHRP 350 REQUIREMENTS.

FILE NAME =	USER NAME = drivakosgn	DESIGNED -	REVISED - 10-18-02
ct:\pw\work\PWIDOT\DRIVAKOSGN\d0108315\1421.dgn		DRAWN -	REVISED - R. BORO 09-14-09
		PLOT SCALE = 49.9999' / IN.	REVISED -
		CHECKED -	REVISED -
		DATE -	REVISED -

**STATE OF ILLINOIS
DEPARTMENT OF TRANSPORTATION**

**DETOUR SIGNING
FOR CLOSING STATE HIGHWAYS**

SCALE: NONE SHEET NO. 1 OF 1 SHEETS STA. TO STA.

F.A. RTE.	SECTION	COUNTY	TOTAL SHEETS	SHEET NO.
	TC-21		537	409
FED. ROAD DIST. NO. 1 ILLINOIS FED. AID PROJECT			CONTRACT NO.	