

F.A.I. RTE.	SECTION	COUNTY	TOTAL SHEETS	SHEET NO.
190	(0101.6&0102.5) RS-2	COOK	85	1
ILLINOIS			CONTRACT NO. 60T33	

#85+1=86
D-91-328-12

FOR INDEX OF SHEETS, SEE SHEET NO. 2

STATE OF ILLINOIS
DEPARTMENT OF TRANSPORTATION
DIVISION OF HIGHWAYS

**PROPOSED
HIGHWAY PLANS**

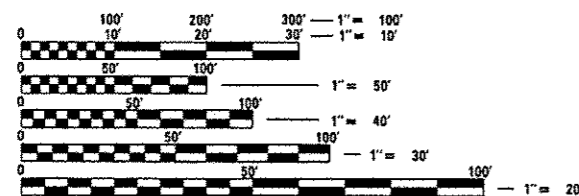
F.A.I. ROUTE 190 (INTERSTATE 190)
O'HARE AIRPORT TO I-90
SECTION (0101.6&0102.5)RS-2
RESURFACING
PROJECT: ACIM-190-1(001)000
COOK COUNTY
C-91-328-12

THE PROJECT IS LOCATED IN THE VILLAGE OF ROSEMONT AND THE CITY OF CHICAGO



TRAFFIC DATA

2010 ADT = 114,700
POSTED SPEED LIMIT = 55 MPH

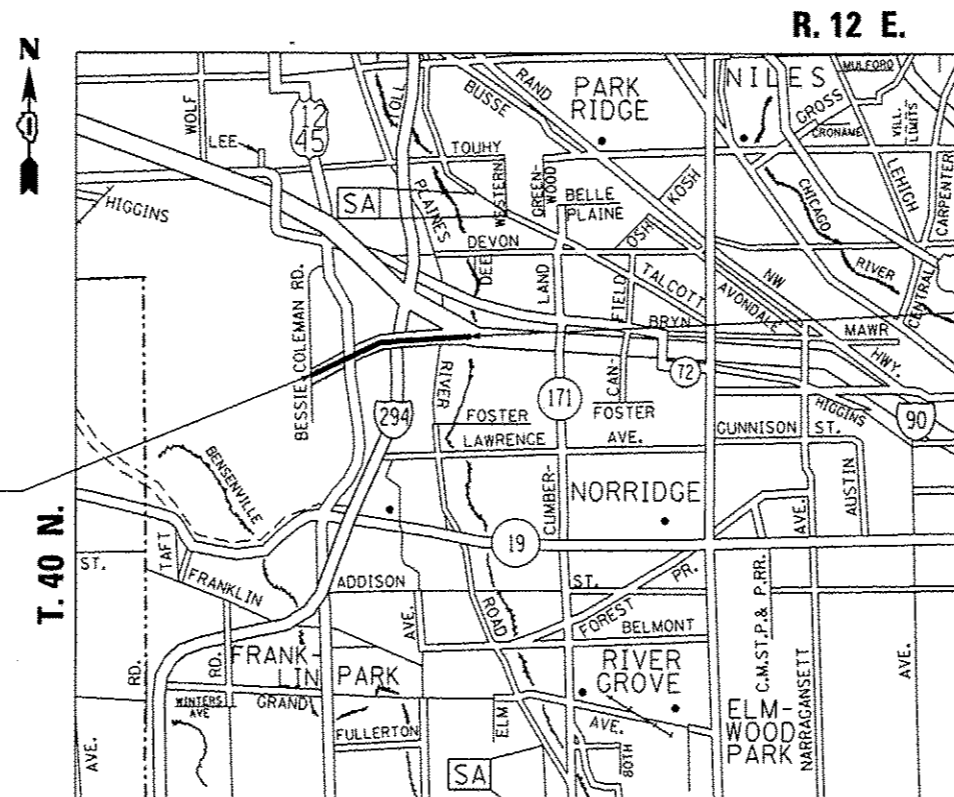


FULL SIZE PLANS HAVE BEEN PREPARED USING STANDARD ENGINEERING SCALES. REDUCED SIZED PLANS WILL NOT CONFORM TO STANDARD SCALES. IN MAKING MEASUREMENTS ON REDUCED PLANS, THE ABOVE SCALES MAY BE USED.

J.U.L.I.E.
JOINT UTILITY LOCATION INFORMATION FOR EXCAVATION
1-800-892-0123
OR 811

PROJECT BEGINS
STA. 42 + 22

PROJECT ENDS
STA. 150 + 27



DU PAGE COUNTY | COOK COUNTY

LOCATED IN THE LEYDEN TWP. & JEFFERSON TWP.

GROSS LENGTH = 10,805.0 FT. = 2.046 MILE
NET LENGTH = 10,805.0 FT. = 2.046 MILE

PROJECT ENGINEER: DAN WILGREEN (847) 705-4240
PROJECT MANAGER: KEN ENG (847) 705-4247

CONTRACT NO. 60T33

STATE OF ILLINOIS
DEPARTMENT OF TRANSPORTATION
DIVISION OF HIGHWAYS

SUBMITTED October 15 20 12
John Fontana
DEPUTY DIRECTOR OF HIGHWAYS, REGION ENGINEER

Dec 7 20 12
John D. Baranzelli, P.E.
ENGINEER OF DESIGN AND ENVIRONMENT

Dec 7 20 12
William B. Frey, Jr.
DIRECTOR OF HIGHWAYS, CHIEF ENGINEER

**PRINTED BY THE AUTHORITY
OF THE STATE OF ILLINOIS**