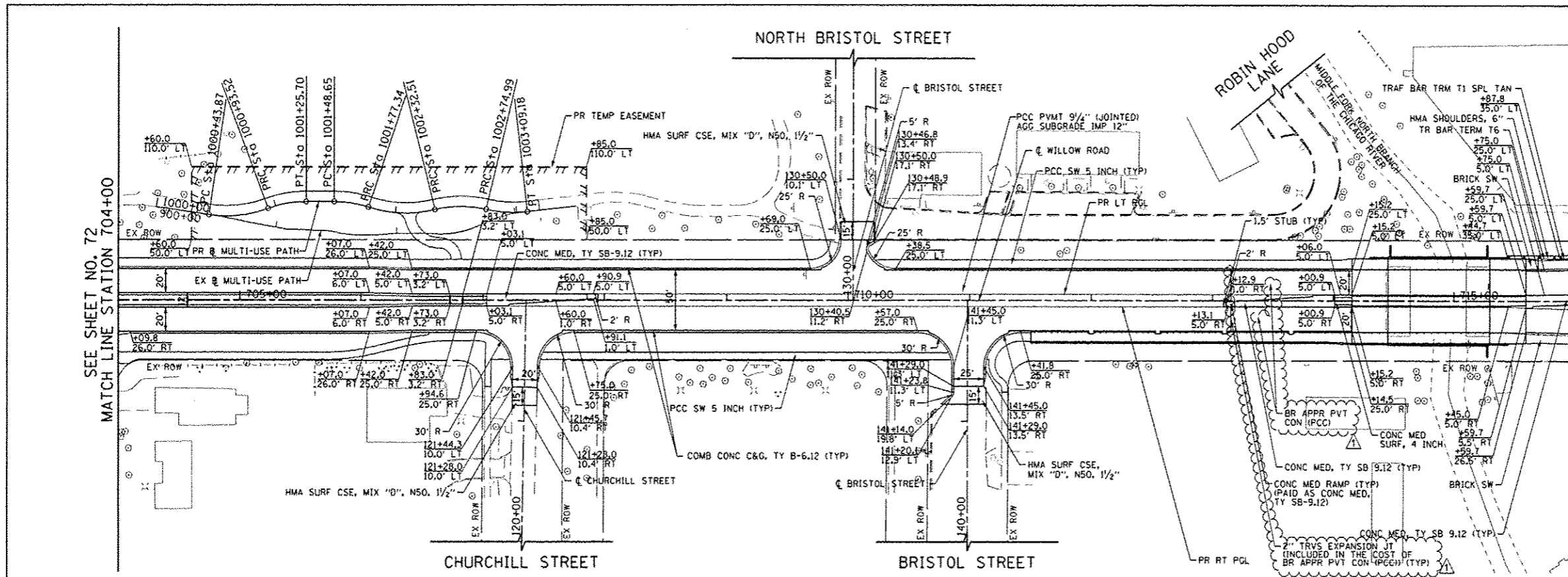


PLAN	REVISIONS	DATE
NO. 1	BY	
NO. 2	DATE	
NO. 3		
NO. 4		
NO. 5		
NO. 6		
NO. 7		
NO. 8		
NO. 9		
NO. 10		

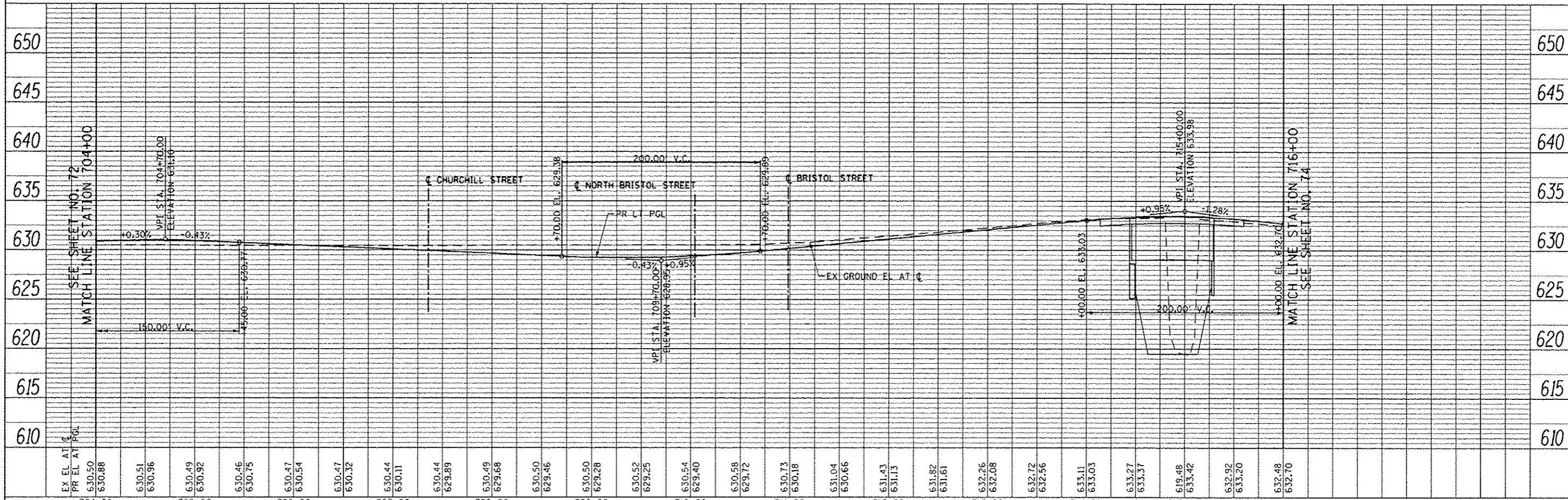
PROFILE	REVISIONS	DATE
NO. 1	BY	
NO. 2	DATE	
NO. 3		
NO. 4		
NO. 5		
NO. 6		
NO. 7		
NO. 8		
NO. 9		
NO. 10		



SEE SHEET NO. 72  
MATCH LINE STATION 704+00

SEE SHEET NO. 74  
MATCH LINE STATION 716+00

- NOTES:
1. FOR SUNSET RIDGE ROAD PLAN AND PROFILE SEE SHEET NO. 79
  2. FOR WAGNER ROAD PLAN AND PROFILE SEE SHEET NO. 80
  3. FOR INTERSTATE 94 RAMP A AND RAMP D PLAN AND PROFILE SEE SHEET NO. 81 TO 84
  4. FOR SOMERSET LANE / OLD WILLOW ROAD PLAN SEE SHEET NO. 99
  5. FOR SIDEWALK AND DRIVEWAY PLANS SEE SHEET NO. 94 TO 98
  6. FOR INTERSECTION AND INTERSTATE 94 RAMP AND AUXILIARY LANE PAVING PLANS SEE SHEET NO. 264 TO 275
  7. FOR PEDESTRIAN REFUGE ISLAND, CURB AND GUTTER TRANSITION, AND MEDIAN TRANSITION DETAILS SEE SHEET NO. 101 TO 103
  8. FOR PROPOSED RIGHT PCL PROFILE SEE SHEET NO. 85 TO 90
  9. THE GENERAL CONTRACTOR IS REQUIRED TO HIRE AN ENVIRONMENTAL FIRM WITH AT LEAST FIVE (5) DOCUMENTED LEAKING UNDERGROUND STORAGE TANK CLEANUPS OR THAT IS PRE-QUALIFIED IN HAZARDOUS WASTE BY THE DEPARTMENT TO REMEDIATE THE SOIL CONTAMINATION AND MONITOR FOR WORKER PROTECTION.



FILE NAME	USER NAME	DESIGNED	REVISION	DATE	SCALE	SHEET NO.	SECTION	COUNTY	TOTAL SHEETS	SHEET NO.
G:\CHIN\18158\Road\Sheets\0160135-SHT-PLAN\F-08.dgn	kaloranz	JLV	12/21/2012		HORIZ: 1"=50'	73 OF 919 SHEETS	1920,01,1518,2022&1922.4BR	COOK	919	73
		DRAWN			VERT: 1"=5'	STA. 704+00 TO STA. 716+00				
		CHECKED								
		DATE								

STATE OF ILLINOIS  
DEPARTMENT OF TRANSPORTATION

WILLOW ROAD PLAN AND PROFILE

F.A.P. RTE.	SECTION	COUNTY	TOTAL SHEETS	SHEET NO.
305	1920,01,1518,2022&1922.4BR	COOK	919	73
CONTRACT NO. 60T35				
FED. ROAD DIST. NO. 1   ILLINOIS FED. AID PROJECT				