

STATE OF ILLINOIS
DEPARTMENT OF TRANSPORTATION

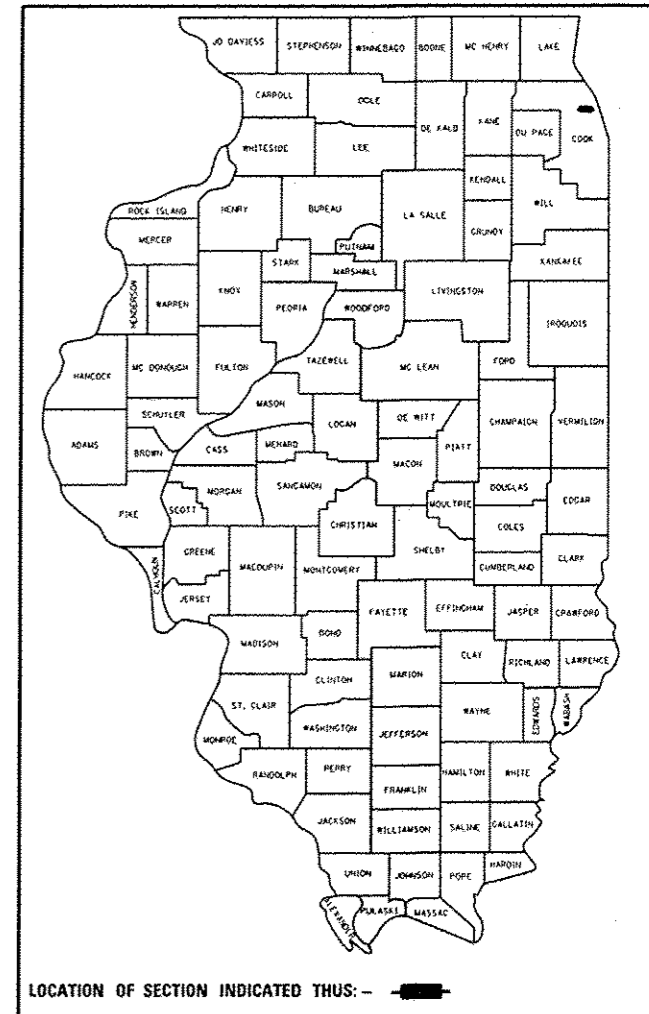
F.A.P. RTE.	SECTION	COUNTY	TOTAL SHEETS	SHEET NO.
341	60B-1-BR(12)	COOK	11	1
		ILLINOIS	CONTRACT NO. 60T67	

FOR INDEX OF SHEETS, SEE SHEET NO.

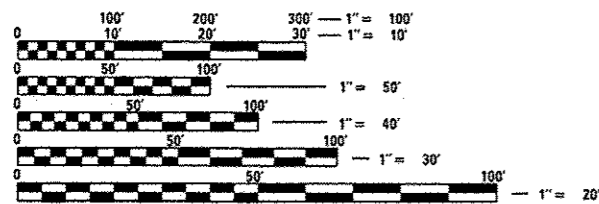
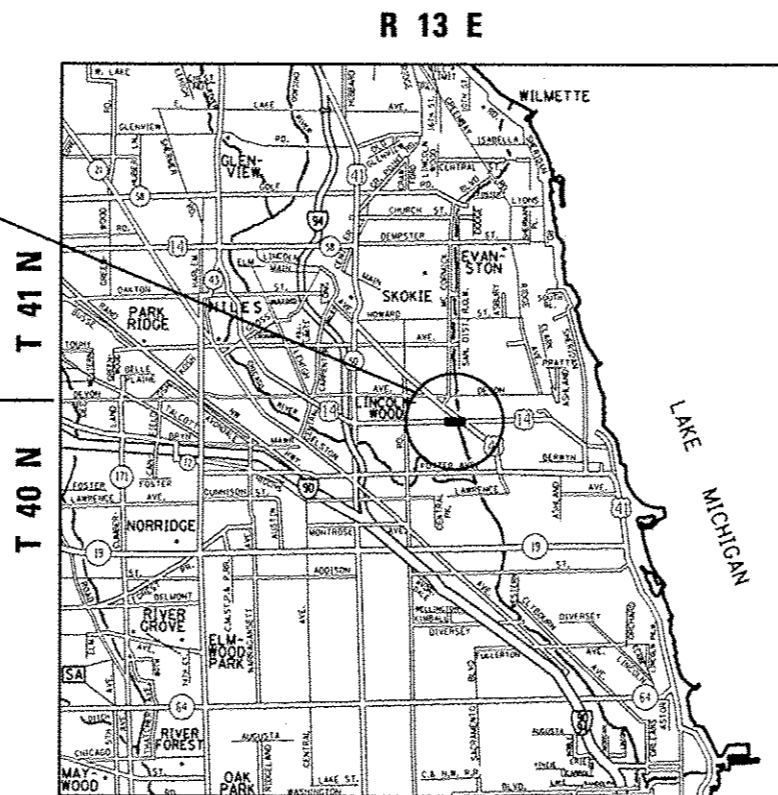
THIS IMPROVEMENT IS LOCATED
IN THE CITY OF CHICAGO

DIVISION OF HIGHWAYS
**PROPOSED
HIGHWAY PLANS**
F.A.P. ROUTE 341: US 14 (PETERSON AVE)
OVER NORTH SHORE CHANNEL
SECTION: 60B-1-BR(12)
SUBSTRUCTURE & STRUCTURAL STEEL REPAIRS
COOK COUNTY
C-91-416-12

D-91-416-12



SN 016-0367 US 14 (PETERSON AVE)
OVER NORTH SHORE CHANNEL



FULL SIZE PLANS HAVE BEEN PREPARED USING STANDARD
ENGINEERING SCALES. REDUCED SIZED PLANS WILL NOT
CONFORM TO STANDARD SCALES. IN MAKING MEASUREMENTS
ON REDUCED PLANS, THE ABOVE SCALES MAY BE USED.

C.U.A.N.
CHICAGO UTILITY ALERT NETWORK
1-312-744-7000

TRAFFIC DATA

ADT = 32500 (2011)
POSTED SPEED LIMIT = 30 MPH

PROJECT ENGINEER: ROBERT BORO (847) 705-4237
PROJECT MANAGER: ISSAM RAYYAN (847) 705-4178

JEFFERSON TOWNSHIP

GROSS AND NET LENGTH = 141.0 FT. = 0.0267 MILE

CONTRACT NO. 60T67

STATE OF ILLINOIS
DEPARTMENT OF TRANSPORTATION
DIVISION OF HIGHWAYS

SUBMITTED October 19 20 12
John Fortmann
DEPUTY DIRECTOR OF HIGHWAYS, REGION ENGINEER

Dec 7 20 12
John D. Baranzelli PE/IC
acting ENGINEER OF DESIGN AND ENVIRONMENT

Dec 7 20 12
William R. Frey IC
acting DIRECTOR OF HIGHWAYS, CHIEF ENGINEER

PRINTED BY THE AUTHORITY
OF THE STATE OF ILLINOIS

INDEX OF SHEETS

STATE STANDARDS

GENERAL NOTES

<u>SHEET NO.</u>	<u>DESCRIPTION</u>	<u>STANDARD NO.</u>	<u>DESCRIPTION</u>
1	TITLE SHEET	701606-08	URBAN LANE CLOSURE MULTILANE, 2W WITH MOUNTABLE MEDIAN
2	INDEX OF SHEETS, STATE STANDARDS, AND GENERAL NOTES	701801-05	LANE CLOSURE MULTILANE 1W OR 2W CROSSWALK OR SIDEWALK CLOSURE
3	SUMMARY OF QUANTITIES	701901-03	TRAFFIC CONTROL DEVICES
4-10	BRIDGE REPAIR DETAILS		
11	ARTERIAL ROAD INFORMATION SIGN (TC-22)		

BEFORE STARTING ANY EXCAVATION, THE CONTRACTOR SHALL CALL "C.U.A.N." AT 1-312-744-7000 FOR FIELDLOCATIONS OF BURIED ELECTRIC, TELEPHONE AND GAS UTILITIES. 48 HOUR NOTIFICATION IS REQUIRED.

THE CONTRACTOR SHALL COORDINATE CONSTRUCTION ACTIVITIES WITH UTILITY COMPANIES, AND THE CITY OF CHICAGO.

THE CONTRACTOR WILL NOT BE ALLOWED TO SET UP A YARD OR FIELD OFFICE ON STATE PROPERTY WITHOUT WRITTEN PERMISSION FROM THE DEPARTMENT.

THE CONTRACTOR SHALL CONTACT THE DISTRICT ONE TRAFFIC CONTROL SUPERVISOR AT (847)705-4470 A MINIMUM OF 72 HOURS IN ADVANCE OF BEGINNING WORK

THE CONTRACTOR SHALL BE REQUIRED TO PROVIDE ACCESS TO ABUTTING PROPERTY AT ALL TIMES DURING THE CONSTRUCTION OF THIS PROJECT.

DO NOT SCALE PLANS FOR CONSTRUCTION DIMENSIONS.

PLAN DIMENSIONS AND DETAILS RELATIVE TO EXISTING PLANS ARE SUBJECT TO NOMINAL CONSTRUCTION VARIATIONS. THE CONTRACTOR SHALL FIELD VERIFY EXISTING DIMENSIONS AND DETAILS AFFECTING NEW CONSTRUCTION AND MAKE NECESSARY APPROVED ADJUSTMENTS PRIOR TO CONSTRUCTION OR ORDERING OF MATERIALS. SUCH VARIATIONS SHALL NOT BE CAUSE FOR ADDITIONAL COMPENSATION FOR A CHANGE IN SCOPE OF THE WORK, HOWEVER, THE CONTRACTOR WILL BE PAID FOR THE QUANTITY ACTUALLY FURNISHED BASED AT THE UNIT PRICE BID FOR THE WORK.

THESE PLANS HAVE BEEN PREPARED FROM NOTES RECEIVED FROM THE BUREAU OF MAINTENANCE BRIDGE INSPECTORS.

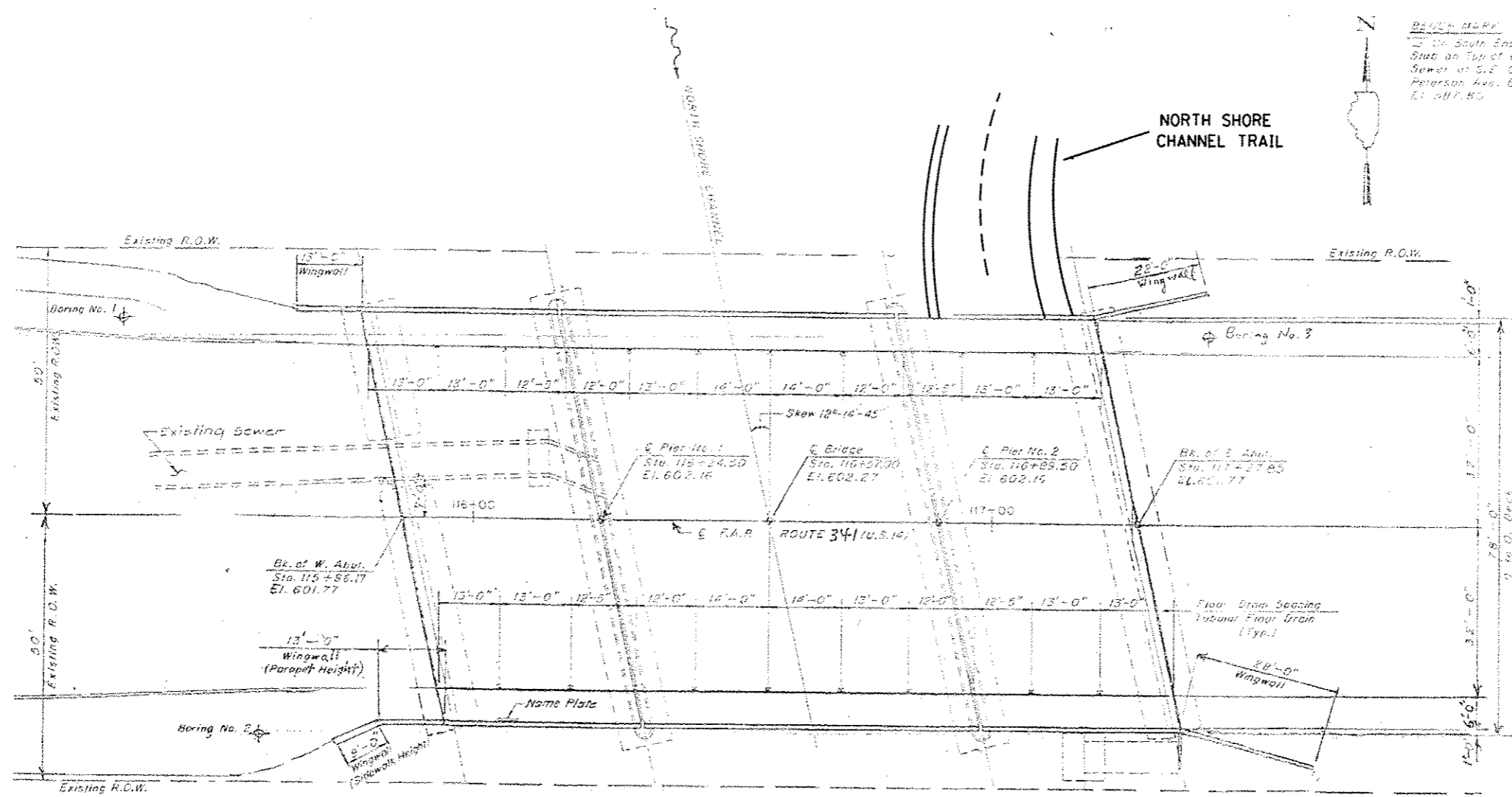
ALL WORK AFFECTING THE NORTH SHORE CHANNEL TRAIL SHALL BE DONE AT NIGHT FOLLOWING STANDARD 701801 AND THE TRAIL SHALL REMAIN OPEN DURING DAYTIME.

THE DEPARTMENT HAS DETERMINED THAT IN STREAM WORK IS NOT REQUIRED FOR THE WORK SPECIFIED IN THIS CONTRACT. THE DEPARTMENT HAS NOT OBTAINED A 404 PERMIT. IF THE CONTRACTOR CHOOSES TO USE ACTIVITIES REQUIRING AN USACE 404 PERMIT IT IS THE CONTRACTOR'S RESPONSIBILITY TO SECURE THE PROPER USACE PERMITS.

FILE NAME *	USER NAME * Perkinsju	DESIGNED - JP	REVISED -	STATE OF ILLINOIS DEPARTMENT OF TRANSPORTATION	INDEX OF SHEETS, STATE STANDARDS AND GENERAL NOTES	F.A.P. RTE.	SECTION	COUNTY	TOTAL SHEETS	SHEET NO.	
c:\pwwork\psidat\perkinsju\100313377\DI4	612-Design.dgn	DRAWN -	REVISED -			341	608-1-BRI121	COOK	11	2	
#MODELNAME#	PLOT SCALE * 100.0000 "/ in.	CHECKED -	REVISED -			CONTRACT NO. 60T67					
	PLOT DATE * 11/8/2012	DATE -	REVISED -			SCALE:	SHEET	OF	SHEETS	STA.	TO STA.

SUMMARY OF QUANTITIES			URBAN 100% STATE TOTAL QUANTITIES	CONSTRUCTION TYPE CODE					SUMMARY OF QUANTITIES				TOTAL QUANTITIES	CONSTRUCTION TYPE CODE				
CODE NO	ITEM	UNIT							CODE NO	ITEM	UNIT							
50500405	FURNISHING AND ERECTING STRUCTURAL STEEL	POUND	7190	7190														
52100010	ELASTOMERIC BEARING ASSEMBLY, TYPE I	EACH	48	48														
52100520	ANCHOR BOLTS, 1"	EACH	96	96														
67000400	ENGINEER'S FIELD OFFICE, TYPE A	CAL MO	3	3														
67100100	MOBILIZATION	L SUM	1	1														
70102625	TRAFFIC CONTROL AND PROTECTION, STANDARD 701606	L SUM	1	1														
70102640	TRAFFIC CONTROL AND PROTECTION, STANDARD 701801	L SUM	1	1														
70200100	NIGHTTIME WORK ZONE LIGHTING	L SUM	1	1														
X8210305	PROTECTION AND MAINTENANCE OF EXISTING UNDERPASS LIGHTING	L SUM	1	1														
Z0001899	JACK AND REMOVE EXISTING BEARINGS	EACH	48	48														
Z0012754	STRUCTURAL REPAIR OF CONCRETE (DEPTH EQUAL TO OR LESS THAN 5 INCHES)	SO FT	730	730														
Z0030850	TEMPORARY INFORMATION SIGNING	SO FT	102.8	102.8														

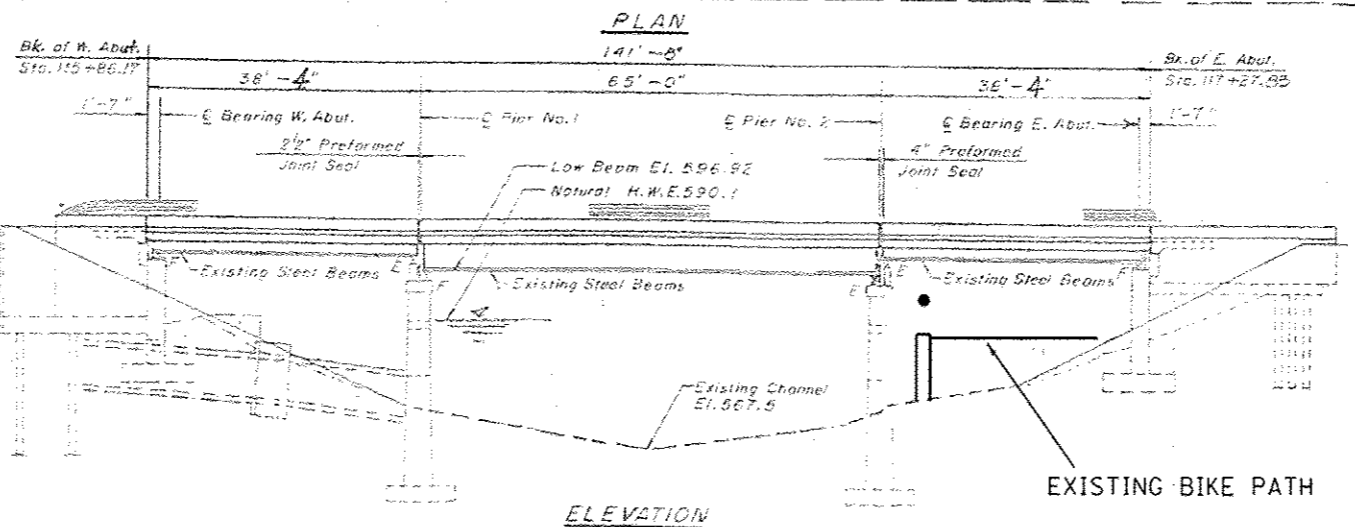
FILE NAME =	USER NAME = Perkinjsu	DESIGNED -	REVISED -	STATE OF ILLINOIS DEPARTMENT OF TRANSPORTATION	SUMMARY OF QUANTITIES				F.A.P. RTE.	SECTION	COUNTY	TOTAL SHEETS	SHEET NO.
CONTRACT NO. 60167	341	60B-1-BR(12)	COOK						11	3			
PLOT SCALE = 100,000 / 1 in.	CHECKED -	REVISED -	SCALE:		SHEET NO. OF SHEETS	STA. TO STA.	FED. ROAD DIST. NO. 1	ILLINOIS FED. AID PROJECT					
PLOT DATE = 11/8/2012	DATE -	REVISED -											



BEACH PLANT
 2" On South End of 4x8"
 Slab on Top of 60" Brick
 Sema at S.E. Corner of
 Peterson Ave. Bridge
 E. 017.85

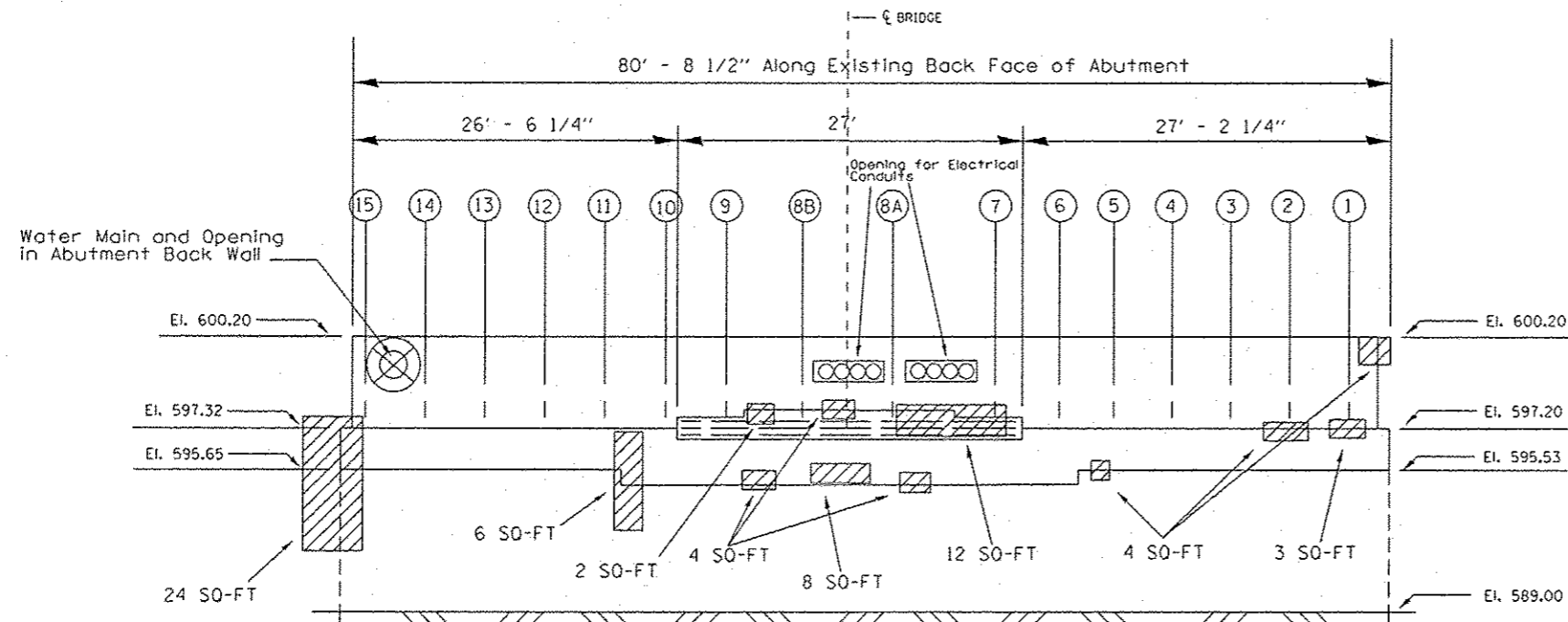
GENERAL BRIDGE NOTES

- ALL STRUCTURAL STEEL SHALL CONFIRM AASHTO CLASSIFICATION M-270 GR. 36, UNLESS OTHERWISE NOTED.
- FASTENERS SHALL BE HIGH STRENGTH BOLTS, BOLTS 3/4", OPEN HOLES 13/16", UNLESS OTHERWISE NOTED.
- PLAN DIMENSIONS AND DETAILS RELATIVE TO EXISTING PLANS ARE SUBJECT TO NOMINAL CONSTRUCTION VARIATIONS. THE CONTRACTOR SHALL FIELD VERIFY EXISTING DIMENSIONS AND DETAILS AFFECTING NEW CONSTRUCTION AND MAKE NECESSARY APPROVED ADJUSTMENTS PRIOR TO CONSTRUCTION OR ORDERING OF MATERIALS. SUCH VARIATIONS SHALL NOT BE CAUSE FOR ADDITIONAL COMPENSATION FOR A CHANGE IN SCOPE OF THE WORK, HOWEVER, THE CONTRACTOR WILL BE PAID FOR THE QUANTITY ACTUALLY FURNISHED BASED ON THE UNIT PRICE BID FOR THE WORK.
- COST OF THE REMOVAL AND RE-INSTALLATION OF ALL MEMBERS NECESSARY TO COMPLETE THE WORK AS DETAILED ON THE PLANS AND AS SPECIFIED IN THE SPECIAL PROVISIONS SHALL BE INCLUDED WITH FURNISHING AND ERECTING STRUCTURAL STEEL.
- THE EXISTING STRUCTURAL STEEL COATING CONTAINS LEAD. THE CONTRACTOR SHALL TAKE APPROPRIATE PRECAUTIONS TO DEAL WITH THE PRESENCE OF LEAD ON THIS PROJECT.
- EXISTING STRUCTURAL STEEL THAT WILL BE IN CONTACT WITH THE NEW STRUCTURAL STEEL SHALL BE CLEANED AND PAINTED PRIOR TO ERECTION AS REQUIRED BY THE SPECIAL PROVISION "CLEANING AND PAINTING CONTRACT SURFACE AREAS OF EXISTING STEEL STRUCTURES."
- ALL STRUCTURAL STEEL SHALL BE SHOP PAINTED WITH THE INORGANIC ZINC RICH PRIMER PER AASHTO M300, TYPE 1, COST INCLUDED WITH FURNISHING AND ERECTING STRUCTURAL STEEL.
- ALL CRIBBING AT THE EAST ABUTMENT SHALL BE INSTALLED 2 FEET AWAY FROM THE WALL TO INSURE NO ADDITIONAL LOADING ON THE CULVERT THAT COMPRISES THE PATH.

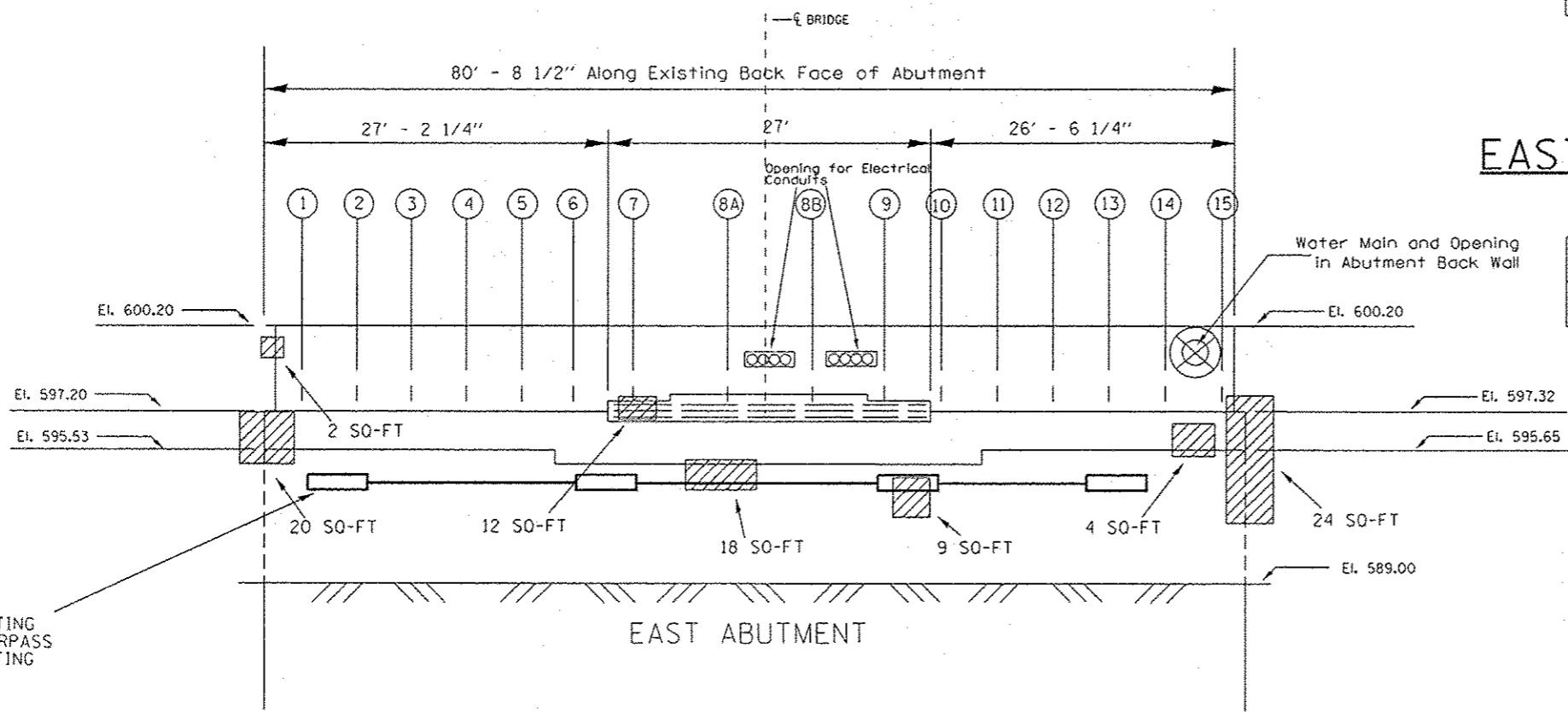


David Carl Puzey 11/20/12
 Expires 11/30/14

FILE NAME =	USER NAME = midjya	DESIGNED - JP	REVISED -	STATE OF ILLINOIS DEPARTMENT OF TRANSPORTATION	US 14 (PETERSON AVE) OVER NORTH SHORE CHANNEL GENERAL PLAN & ELEVATION SN 016-0367	F.A.P. R.T.E. =	SECTION	COUNTY	TOTAL SHEETS	SHEET NO.	
ei:\ps_work\pvidot\midjya\0313377\014161	Design.dgn	DRAWN -	REVISED -			341	60B-1-BR(12)	COOK	11	4	
#MODELNAME#	PLOT SCALE = 100.0000' / 1"	CHECKED - JMK	REVISED -			CONTRACT NO. 60T67					
	PLOT DATE = 11/16/2012	DATE -	REVISED -			ILLINOIS FED. AID PROJECT					



WEST ABUTMENT



EAST ABUTMENT

TOTAL BILL OF MATERIALS

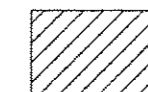
ITEM	UNIT	QUANTITY
STRUCTURAL REPAIR OF CONCRETE ≤ 5"	SO. FT	730
ELASTOMETRIC BEARING ASSEMBLY, TYPE I	EACH	48
JACK & REMOVE EXISTING BEARINGS	EACH	48
FURNISHING AND ERECTING STRUCTURAL STEEL	POUND	7190
ANCHOR BOLTS 1"	EACH	96

WEST ABUTMENT BILL OF MATERIALS

ITEM	UNIT	QUANTITY
STRUCTURAL REPAIR OF CONCRETE ≤ 5"	SO. FT	79

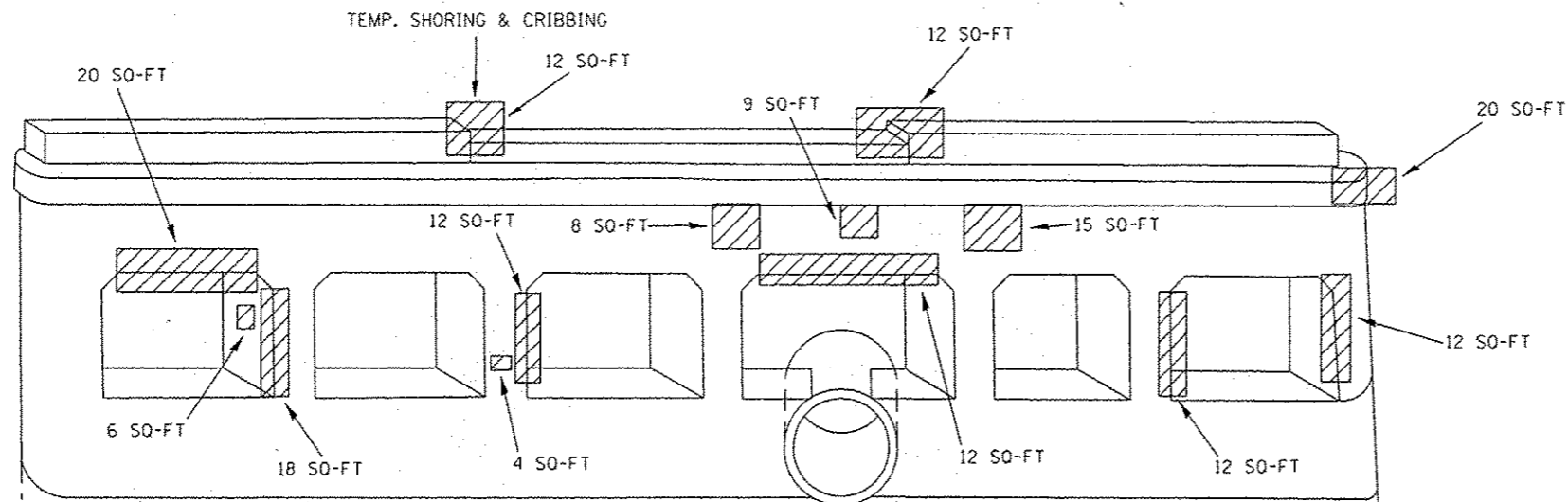
EAST ABUTMENT BILL OF MATERIALS

ITEM	UNIT	QUANTITY
STRUCTURAL REPAIR OF CONCRETE ≤ 5"	SO. FT	89

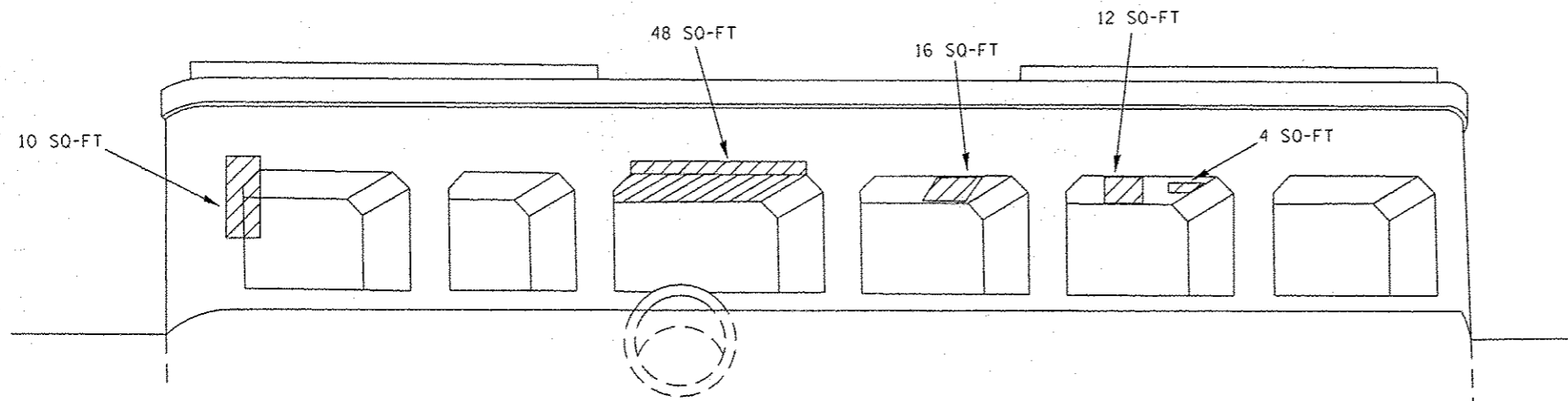


STRUCTURAL REPAIR OF CONCRETE ≤ 5"

FOR BEAM REACTIONS SEE SHEET NO. 6



Pier No.1
EAST ELEVATION
(Looking West)



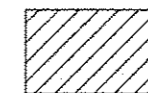
Pier No.1
WEST ELEVATION
(Looking East)

REACTIONS

SPAN 1 & 3 ABUT. OR PIER	SPAN 2 PIER 1 OR 2
$D = 13.2k$	$D = 25.9k$
$L = 23.0k$	$L = 26.4k$
Imp. = 6.9k	Imp. = 7.2k
Total = 43.1k	Total = 59.5k

Pier No.1 BILL OF MATERIALS

ITEM	UNIT	QUANTITY
STRUCTURAL REPAIR OF CONCRETE $\leq 5"$	SO. FT	262

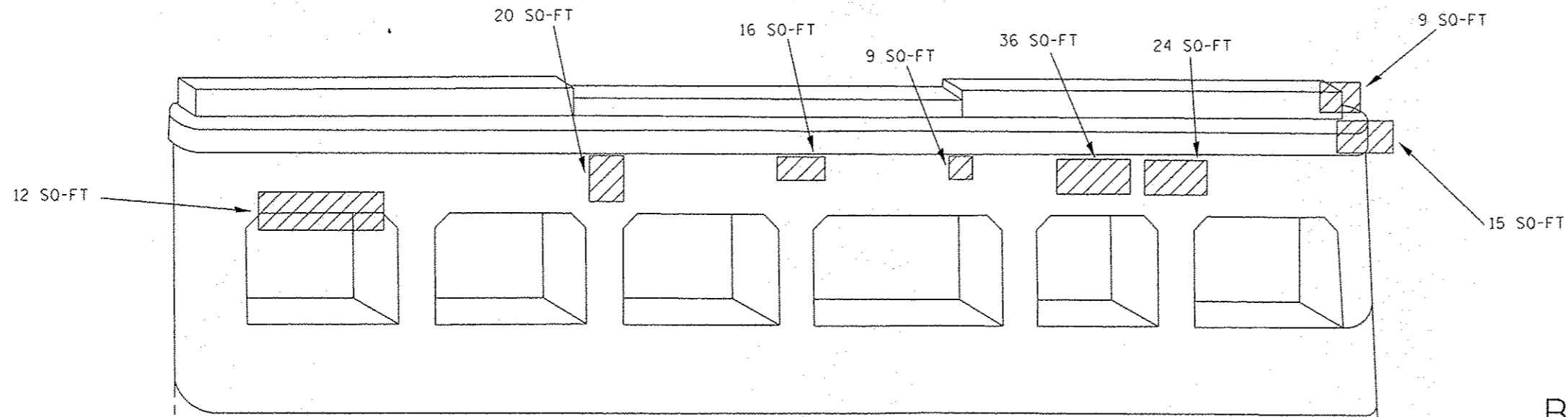


STRUCTURAL REPAIR OF CONCRETE $\leq 5"$

THE TEMPORARY SHORING AND CRIBBING(1-EACH) SHALL BE INCLUDED IN THE COST OF JACK AND REMOVE EXISTING BEARING. THE SUBSTRUCTURE REPAIRS SHALL BE COMPLETE PRIOR TO REMOVING THE BEARING.

FILE NAME *	USER NAME * Perkinsju	DESIGNED - JP	REVISED -	STATE OF ILLINOIS DEPARTMENT OF TRANSPORTATION	US 14 (PETERSON AVE) OVER NORTH SHORE CHANNEL SUBSTRUCTURE REPAIR PIER 1	F.A.P. RTE.	SECTION	COUNTY	TOTAL SHEETS	SHEET NO.	
c:\pwork\pwork\perkinsju\0313377\014	612-Design.dgn	DRAWN -	REVISED -			341	60B-1-BR(12)	COOK	11	6	
MODELNAME*	PLOT SCALE * 100.0000 1/16 in.	CHECKED -	REVISED -			CONTRACT NO. 60T67					
	PLOT DATE * 11/9/2012	DATE -	REVISED -			ILLINOIS FED. AID PROJECT					

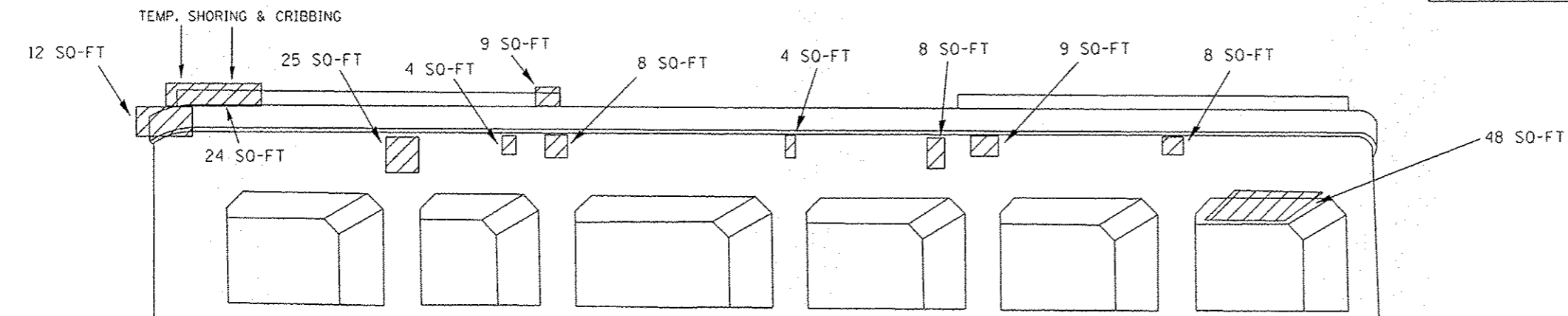
SCALE: SHEET 3 OF 7 SHEETS STA. TO STA.



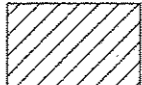
Pier No.2
WEST ELEVATION
(Looking East)

Pier No.2
BILL OF MATERIALS

ITEM	UNIT	QUANTITY
STRUCTURAL REPAIR OF CONCRETE \leq 5"	SO. FT	300

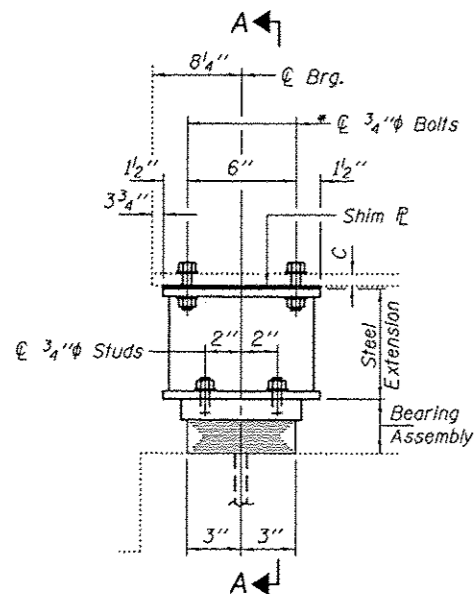


Pier No.2
EAST ELEVATION
(Looking West)

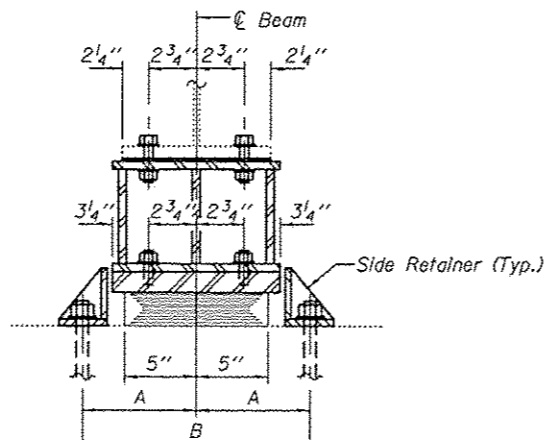
 STRUCTURAL REPAIR OF CONCRETE \leq 5"

THE TEMPORARY SHORING AND CRIBBING(2-EACH) SHALL BE INCLUDED IN THE COST OF JACK AND REMOVE EXISTING BEARING. THE SUBSTRUCTURE REPAIRS SHALL BE COMPLETE PRIOR TO REMOVING THE BEARING.

FILE NAME	USER NAME	DESIGNED	REVISED	STATE OF ILLINOIS DEPARTMENT OF TRANSPORTATION	US 14 (PETERSON AVE) OVER NORTH SHORE CHANNEL SUBSTRUCTURE REPAIR PIER 2	F.A.P. RTE.	SECTION	COUNTY	TOTAL SHEETS	SHEET NO.	
c:\pwwork\pawidat\parkinsju\d0313377\014	612-Design.dgn	DRAWN	REVISED			341	608-1-BR(12)	COOK	11	7	
#MODELNAME#	PLOT SCALE	CHECKED	REVISED			CONTRACT NO. 60167					
	PLOT DATE	DATE	REVISED			SCALE:	SHEET 4	OF 7	SHEETS	STA.	TO STA.



ELEVATION

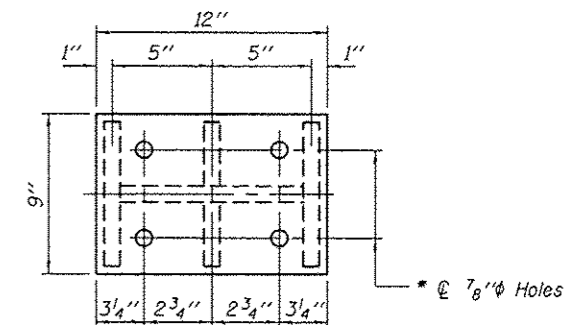


SECTION A-A

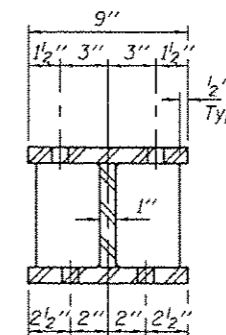
BEAM REACTIONS

R _l	(K)	13.2
R _t	(K)	23.0
Imp.	(K)	6.9
R (Total)	(K)	43.1

Notes:
 Diaphragm removal and installation may be required to facilitate drilling holes. Cost included with Furnishing and Erecting Structural Steel.
 New steel extensions, shim plates and connection bolts are included with Furnishing and Erecting Structural Steel.
 Prior to ordering any material, the Contractor shall verify in the field all bearing height and shim thickness dimensions. Min. jack capacity = 25 Tons.
 Anchor bolts shall be ASTM F1554 all-thread (or an Engineer-approved alternate material) of the grade(s) and diameter(s) specified. ASTM A307 Grade C anchor bolts may be used in lieu of ASTM F1554 Grade 36 (F_y=36ksi). The corresponding specified grade of AASHTO M314 anchor bolts may be used in lieu of ASTM F1554.
 Drilled and set anchor bolts shall be installed according to Article 521.06 of the Standard Specifications.
 Side retainers shall be included in the cost of Elastomeric Bearing Assembly, Type I.



PLAN TOP AND BOTTOM PLATE



SECTION B-B

STEEL EXTENSION DETAIL

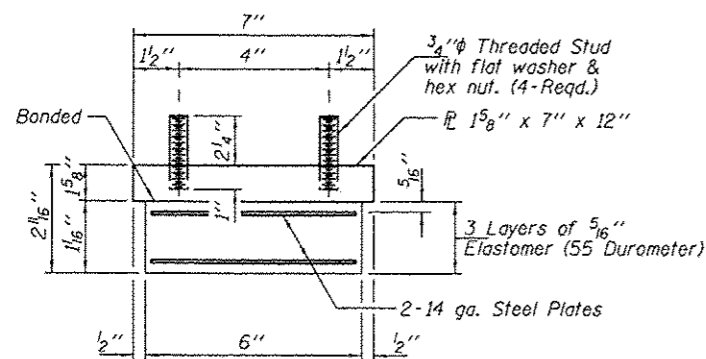
* Use holes in existing flange of beams 7, 8A, 8B & 9 as template for drilling holes in top extension plate. Field drill holes in beams 1 thru 6 & 10 thru 15 using holes in top plate as template.

TYPE I ELASTOMERIC EXP. BRG.

(Pier 1, Span 1 or Pier 2, Span 3)

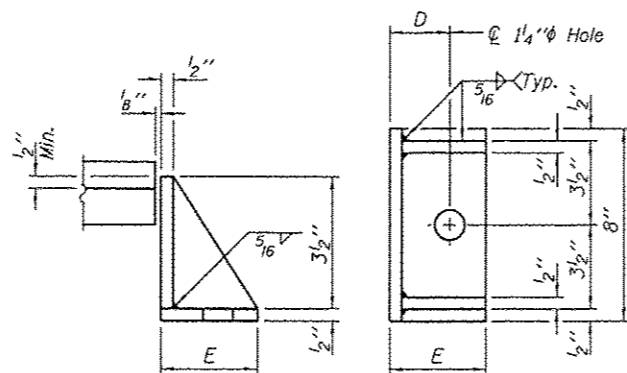
BEARING DIMENSIONS

MARK	BEAMS 1 THRU 6 & 10 THRU 15	BEAMS 7, 8A, 8B & 9
A	8 3/4"	9 3/4"
B	1'-5 1/2"	1'-7 1/2"
C	3"	5"
D	2 5/8"	3 5/8"
E	4 1/2"	5 1/2"
F	10 1/16"	11 9/16"
G	8 1/16"	9 9/16"



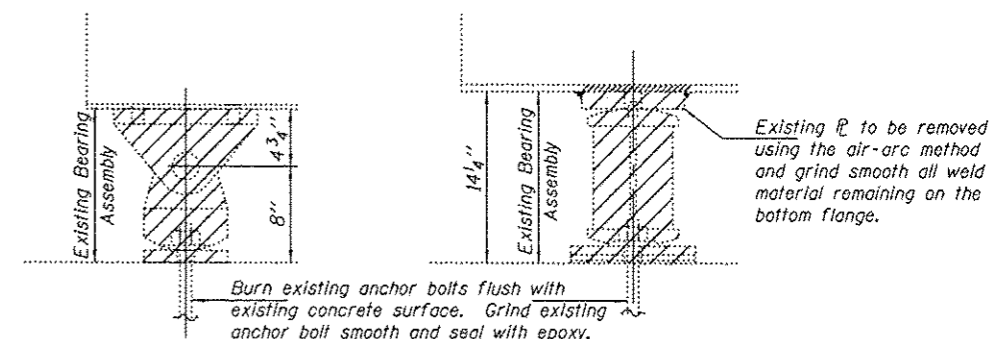
BEARING ASSEMBLY

Note:
 Shim plates shall not be placed under Bearing Assembly.



SIDE RETAINER

Equivalent rolled angle with stiffeners will be allowed in lieu of welded plates.



BEAMS 1 THRU 6 & 10 THRU 15 BEAMS 7, 8A, 8B & 9

EXISTING BEARING REMOVAL DETAIL

Cost included with Jack and Remove Existing Bearings.

BILL OF MATERIAL

Item	Unit	Total
Elastomeric Bearing Assembly, Type I	Each	32
Jack and Remove Existing Bearings	Each	32
Furnishing and Erecting Structural Steel	Pound	4510
Anchor Bolts 1"φ	Each	64

TYI/REPS 12-03-2008

DESIGNED VHV
 CHECKED DAB
 DRAWN ballva
 CHECKED VHV DAB

EXAMINED
 PASSED
 Timothy A. ...
 ACTING ENGINEER OF STRUCTURAL SERVICES
 ...
 ACTING ENGINEER OF BRIDGES AND STRUCTURES

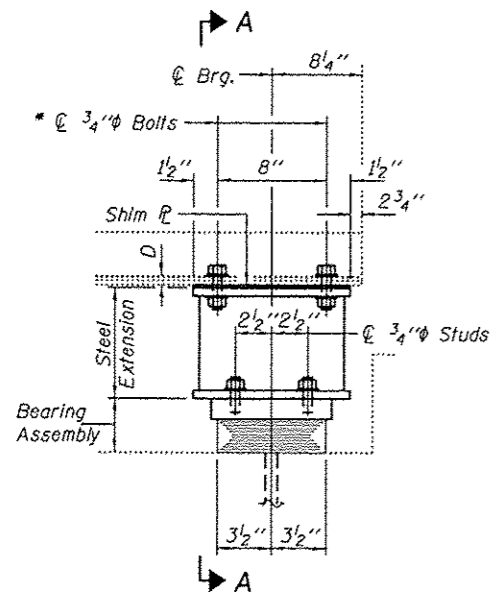
DATE NOVEMBER 16, 2012
 REVISED
 REVISED

STATE OF ILLINOIS
 DEPARTMENT OF TRANSPORTATION

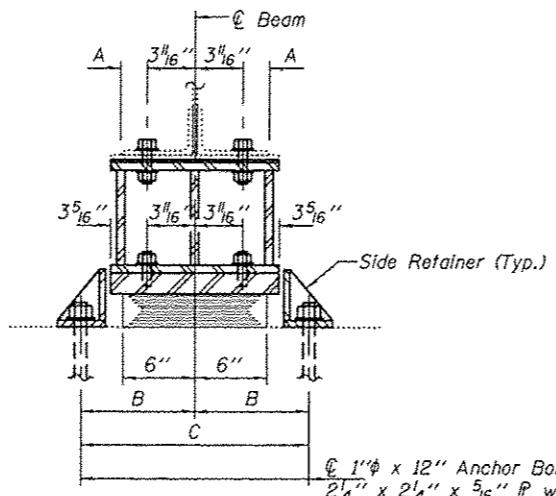
REPAIR DETAILS
 SN 016-0367

SHEET NO. 5 OF 7 SHEETS

F.A.P. RTE. SECTION COUNTY TOTAL SHEET NO.
 341 608-1-BR(2) COOK 13 8
 CONTRACT NO. 60T67
 ILLINOIS FED. AID PROJECT



ELEVATION

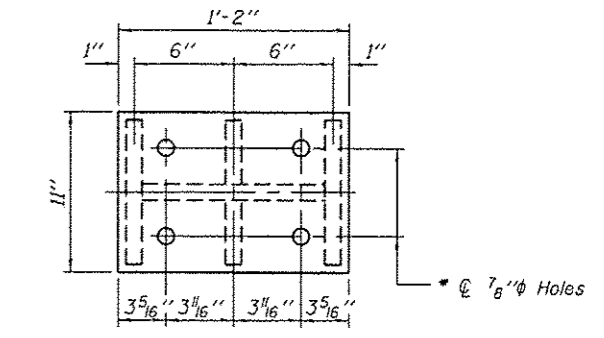


SECTION A-A

BEAM REACTIONS

R _L	(K)	25.9
R _R	(K)	26.4
Imp.	(K)	7.2
R (Total)	(K)	59.5

Notes:
 Diaphragm removal and reinstallation may be required to facilitate drilling holes. Cost included with Furnishing and Erecting Structural Steel.
 New steel extensions, shim plates and connection bolts are included with Furnishing and Erecting Structural Steel.
 Prior to ordering any material, the Contractor shall verify in the field all bearing height and shim thickness dimensions. Min. jack capacity = 35 Tons.
 Anchor bolts shall be ASTM F1554 all-thread (or an Engineer-approved alternate material) of the grade(s) and diameter(s) specified. ASTM A307 Grade C anchor bolts may be used in lieu of ASTM F1554 Grade 36 (Fy=36ksi). The corresponding specified grade of AASHTO M314 anchor bolts may be used in lieu of ASTM F1554.
 Drilled and set anchor bolts shall be installed according to Article 521.06 of the Standard Specifications.
 Side retainers shall be included in the cost of Elastomeric Bearing Assembly, Type I.

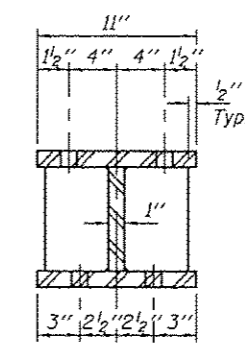


PLAN TOP AND BOTTOM PLATE

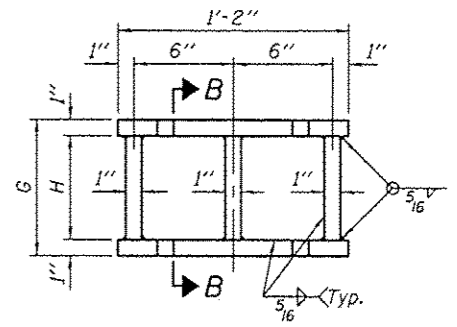
TYPE I ELASTOMERIC EXP. BRG.
 (Pier 2, Span 2)

BEARING DIMENSIONS

MARK	BEAMS 2 THRU 6 & 10 THRU 14	BEAMS 7, 8A, 8B & 9
A	2 1/2"	2 3/8"
B	10 3/4"	11"
C	1'-9 1/2"	1'-10"
D	3 1/2"	1 3/8"
E	3 5/8"	3 7/8"
F	5 1/2"	5 3/4"
G	8 5/8"	10 3/4"
H	6 5/8"	8 3/4"

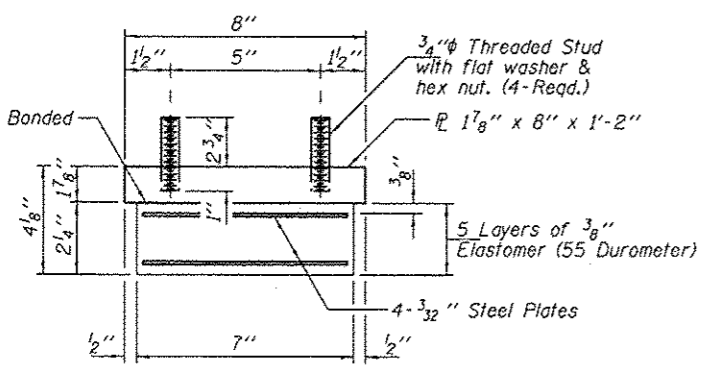


SECTION B-B



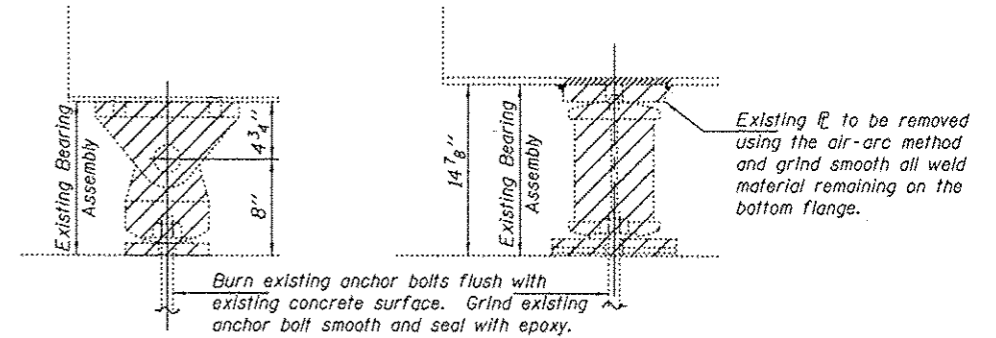
STEEL EXTENSION DETAIL

* Use holes in existing flange of beams 7, 8A, 8B & 9 as template for drilling holes in top extension plate. Field drill holes in beams 2 thru 6 & 10 thru 14 using holes in top plate as template.



BEARING ASSEMBLY

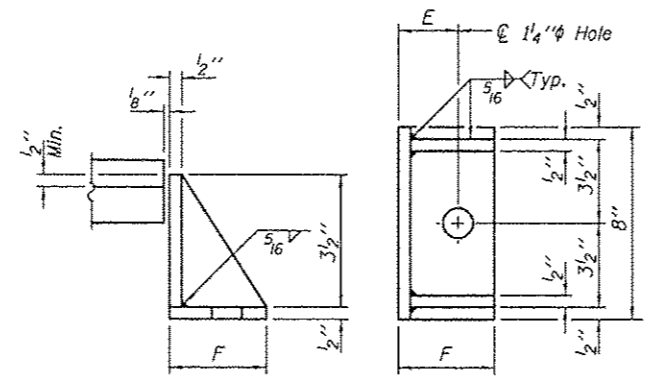
Note:
 Shim plates shall not be placed under Bearing Assembly.



BEAMS 2 THRU 6 & 10 THRU 14 BEAMS 7, 8A, 8B & 9

EXISTING BEARING REMOVAL DETAIL

Cost included with Jack and Remove Existing Bearings.



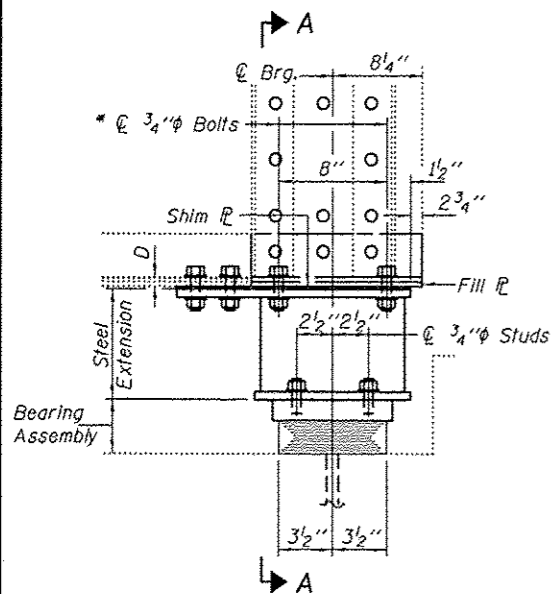
SIDE RETAINER

Equivalent rolled angle with stiffeners will be allowed in lieu of welded plates.

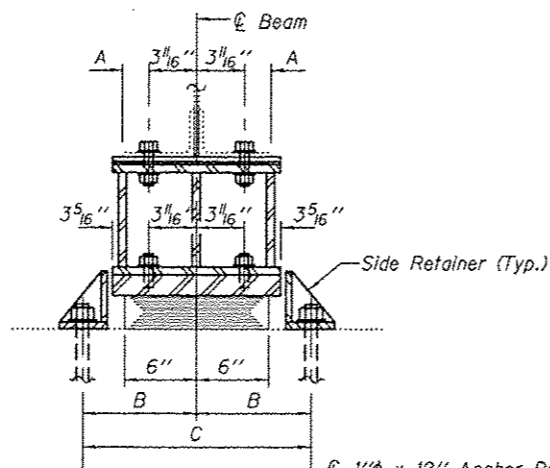
BILL OF MATERIAL

Item	Unit	Total
Elastomeric Bearing Assembly, Type I	Each	14
Jack and Remove Existing Bearings	Each	14
Furnishing and Erecting Structural Steel	Pound	2310
Anchor Bolts 1"φ	Each	28

TYI/REPS 12-03-2008



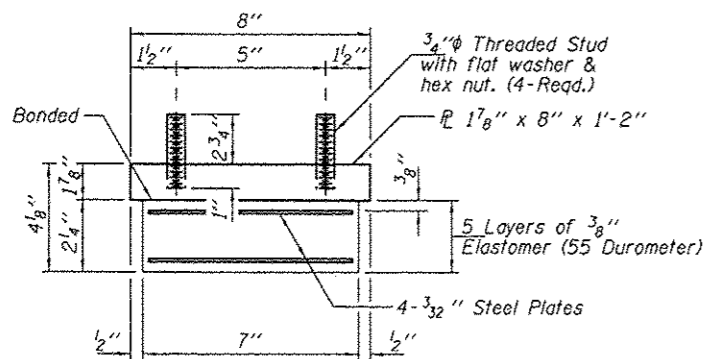
ELEVATION



SECTION A-A

TYPE I ELASTOMERIC EXP. BRG.

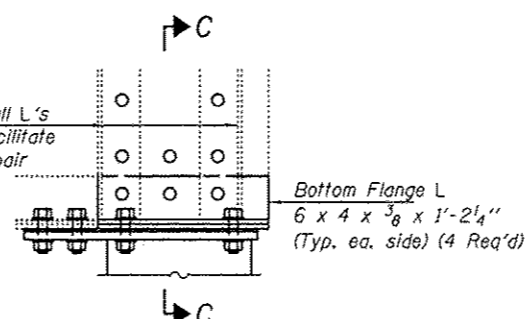
(Pier 2, Span 2)



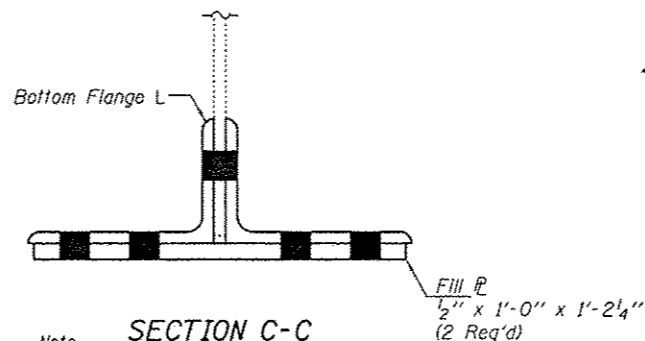
BEARING ASSEMBLY

Note: Shim plates shall not be placed under Bearing Assembly.

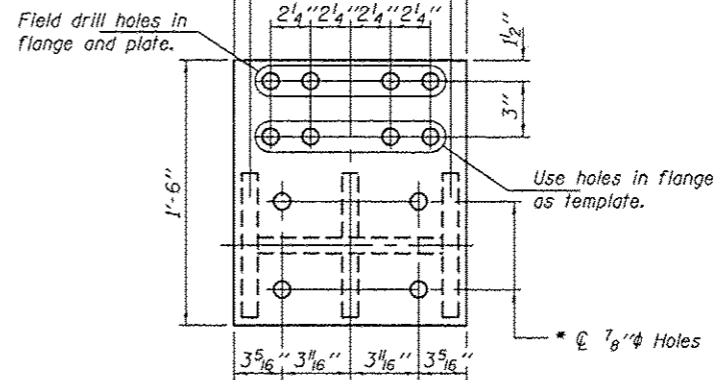
Remove & Reinstall L's as required to facilitate installation of Repair Plates & Angles.



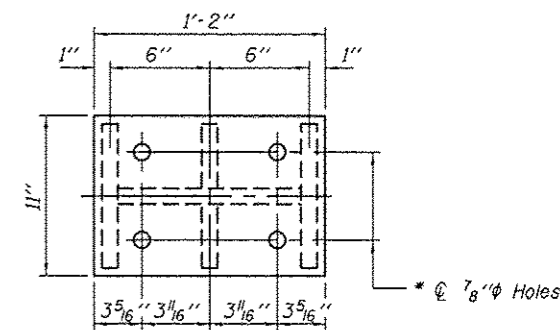
ELEVATION AT FLANGE REPAIR



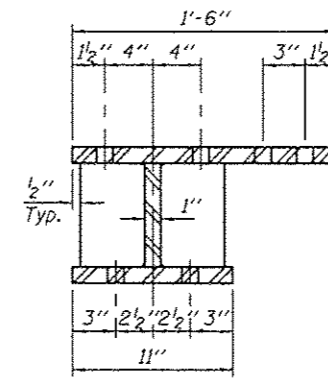
SECTION C-C
Note: Field drill holes in new Repair P's & L's using existing holes as template.



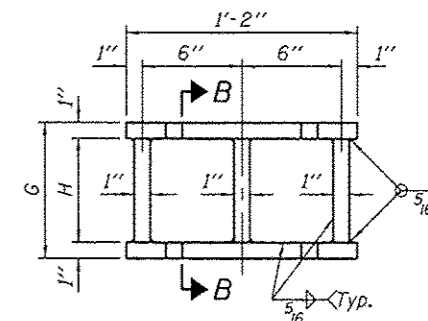
PLAN TOP PLATE



PLAN BOTTOM PLATE

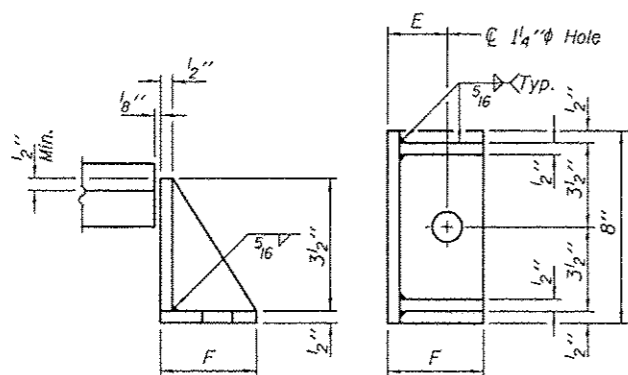


SECTION B-B



STEEL EXTENSION DETAIL

* Field drill holes in beams 1 & 15 using holes in top plate as template, except as noted.



SIDE RETAINER

Equivalent rolled angle with stiffeners will be allowed in lieu of welded plates.

BEAM REACTIONS

RP	(K)	25.9
RL	(K)	26.4
Imp.	(K)	7.2
R (Total)	(K)	59.5

Notes:
Diaphragm removal and reinstallation may be required to facilitate drilling holes. Cost included with Furnishing and Erecting Structural Steel.
New steel extensions, shim plates and connection bolts are included with Furnishing and Erecting Structural Steel.
Prior to ordering any material, the Contractor shall verify in the field all bearing height and shim thickness dimensions. Min. Jack capacity = 35 Tons.
Anchor bolts shall be ASTM F1554 all-thread (or an Engineer-approved alternate material) of the grade(s) and diameter(s) specified. ASTM A307 Grade C anchor bolts may be used in lieu of ASTM F1554 Grade 36 (Fy=36ksi). The corresponding specified grade of AASHTO M314 anchor bolts may be used in lieu of ASTM F1554.
Drilled and set anchor bolts shall be installed according to Article 521.06 of the Standard Specifications.
Side retainers shall be included in the cost of Elastomeric Bearing Assembly, Type I.

BEAMS 1 & 15

EXISTING BEARING REMOVAL DETAIL

Cost included with Jack and Remove Existing Bearings.

BEARING DIMENSIONS

MARK	BEAMS 1 & 15
A	2 1/2"
B	10 3/4"
C	1'-9 1/2"
D	3"
E	3 3/8"
F	5 1/2"
G	8 3/8"
H	6 5/8"

BILL OF MATERIAL

Item	Unit	Total
Elastomeric Bearing Assembly, Type I	Each	2
Jack and Remove Existing Bearings	Each	2
Furnishing and Erecting Structural Steel	Pound	370
Anchor Bolts 1"φ	Each	4

TYI/REPS 12-03-2008

DESIGNED VHV
CHECKED DAB
DRAWN baliva
CHECKED VHV DAB

EXAMINED
PASSED
Timothy A. ...
ACTING ENGINEER OF STRUCTURAL SERVICES
Carl ...
ACTING ENGINEER OF BRIDGES AND STRUCTURES

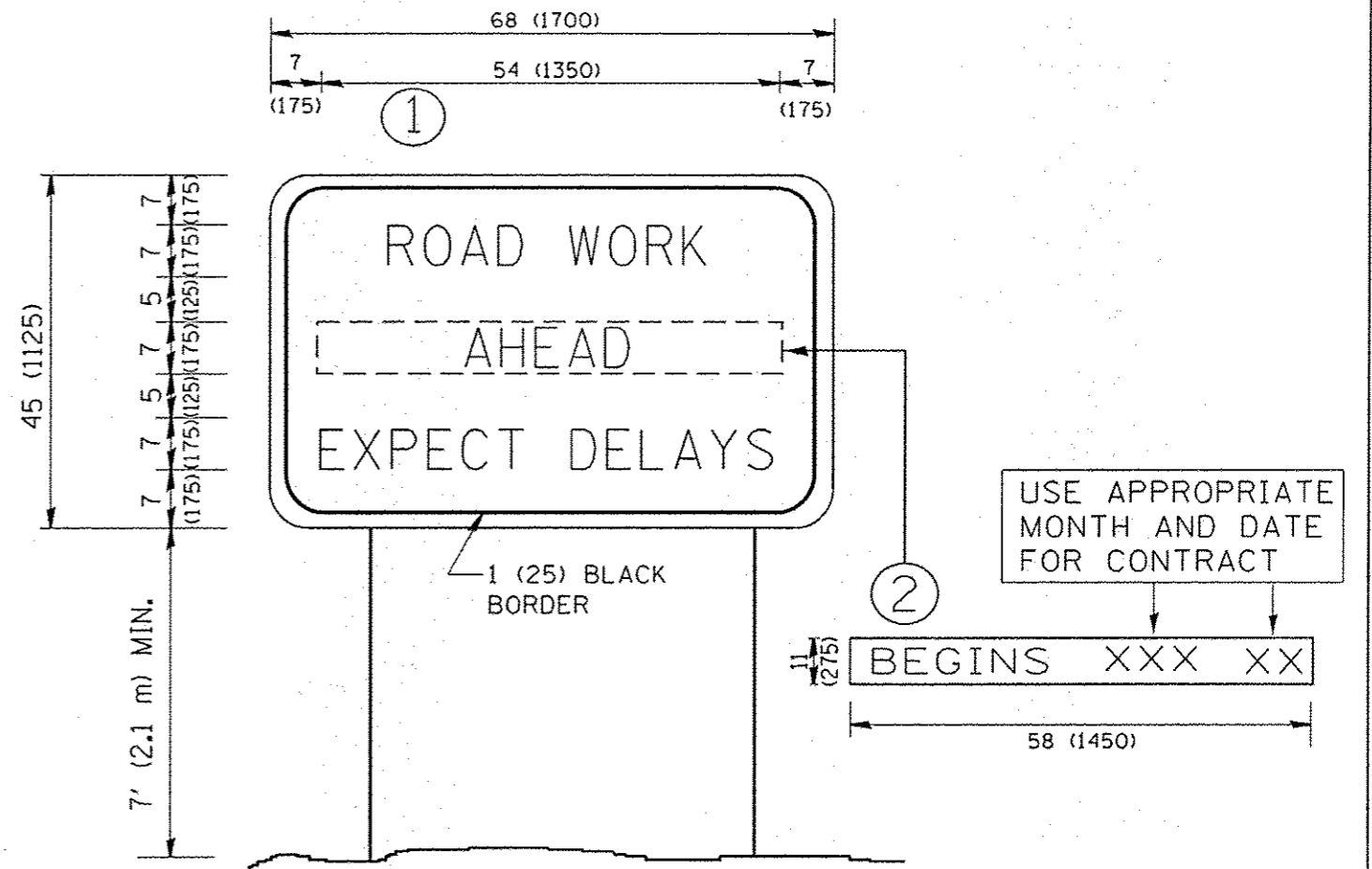
DATE NOVEMBER 16, 2012
REVISED
REVISED

STATE OF ILLINOIS
DEPARTMENT OF TRANSPORTATION

REPAIR DETAILS
SN 016-0367

SHEET NO. 7 OF 7 SHEETS

F.A.P. RTE.	SECTION	COUNTY	TOTAL SHEETS	SHEET NO.
341	608-1-BR(12)	COOK	13	10
CONTRACT NO. 60T67				
ILLINOIS FED. AID PROJECT				



NOTES:

1. USE BLACK LETTERING ON ORANGE BACKGROUND.
2. ERECT SIGNS IN ADVANCE OF THE LOCATION FOR THE "ROAD CONSTRUCTION AHEAD" SIGN AT LOCATIONS AS DIRECTED BY THE ENGINEER.
3. ERECT SIGN ① WITH INSTALLED PANEL ② ONE WEEK PRIOR TO THE START OF CONSTRUCTION.
4. REMOVE PANEL ② SOON AFTER THE START OF CONSTRUCTION.
5. SEE SPECIAL PROVISION FOR "TEMPORARY INFORMATION SIGNING" FOR ADDITIONAL INFORMATION.
6. ONE SIGN ASSEMBLY EQUALS 25.70 SQ. FT. (2.3 SQ. M.)
7. SHALL BE PAID FOR AS TEMPORARY INFORMATION SIGNING.

ALL DIMENSIONS ARE IN INCHES (MILLIMETERS) UNLESS OTHERWISE SHOWN.

FILE NAME : c:\p\work\p1dot\perkinsju\d0313377\DI4	USER NAME : Perkinsju 612-Design.dgn	DESIGNED - DRAWN -	REVISED - R. MIRS 09-15-97 REVISED - R. MIRS 12-11-97	STATE OF ILLINOIS DEPARTMENT OF TRANSPORTATION	ARTERIAL ROAD INFORMATION SIGN		F.A. RTE. 341	SECTION 608-1-BR(12)	COUNTY COOK	TOTAL SHEETS 11	SHEET NO. 11	
PLOT SCALE : 100.0000 1/8" = 1'	CHECKED -	REVISED - T. RAMMACHER 02-02-99	REVISED - C. JUCIUS 01-31-07		SCALE: NONE	SHEET NO. 1	OF 1 SHEETS	STA.	TO STA.	FED. ROAD DIST. NO. 1 ILLINOIS FED. AID PROJECT CONTRACT NO. 60T67		
PLOT DATE : 11/8/2012	DATE -											