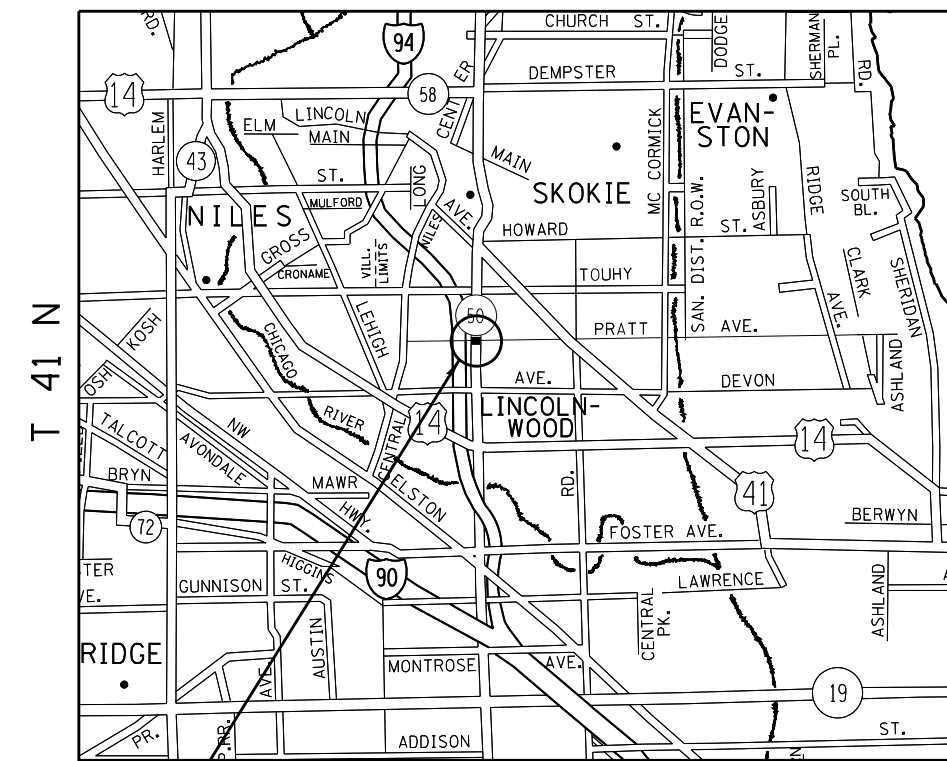




LOCATION 1

R 13 E



T 41 N

NILES TOWNSHIP

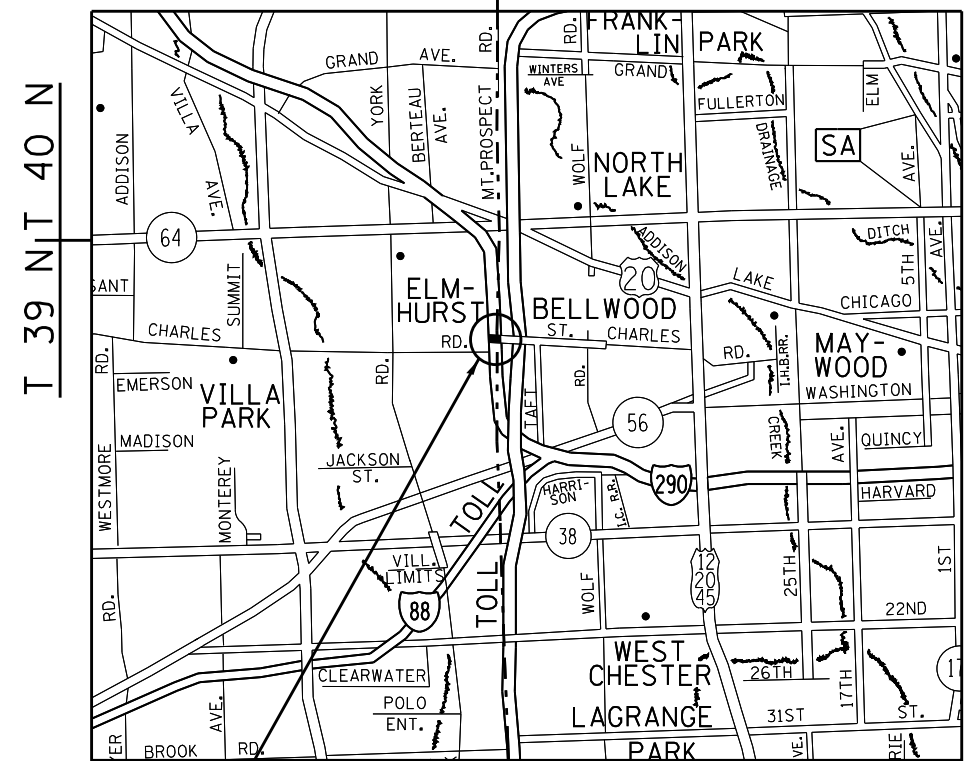
I-94 @ PRATT AVE.
VILLAGE OF LINCOLNWOOD
(SN 016-0831)

TRAFFIC DATA: (I-94)
SPEED LIMIT = 55 MPH
2010 ADT = 156,900

TRAFFIC DATA: (PRATT AVE.)
SPEED LIMIT = 35 MPH
2010 ADT = 8,600

LOCATION 2

R 11 E | R 12 E



T 39 N | T 40 N

PROVISO TOWNSHIP

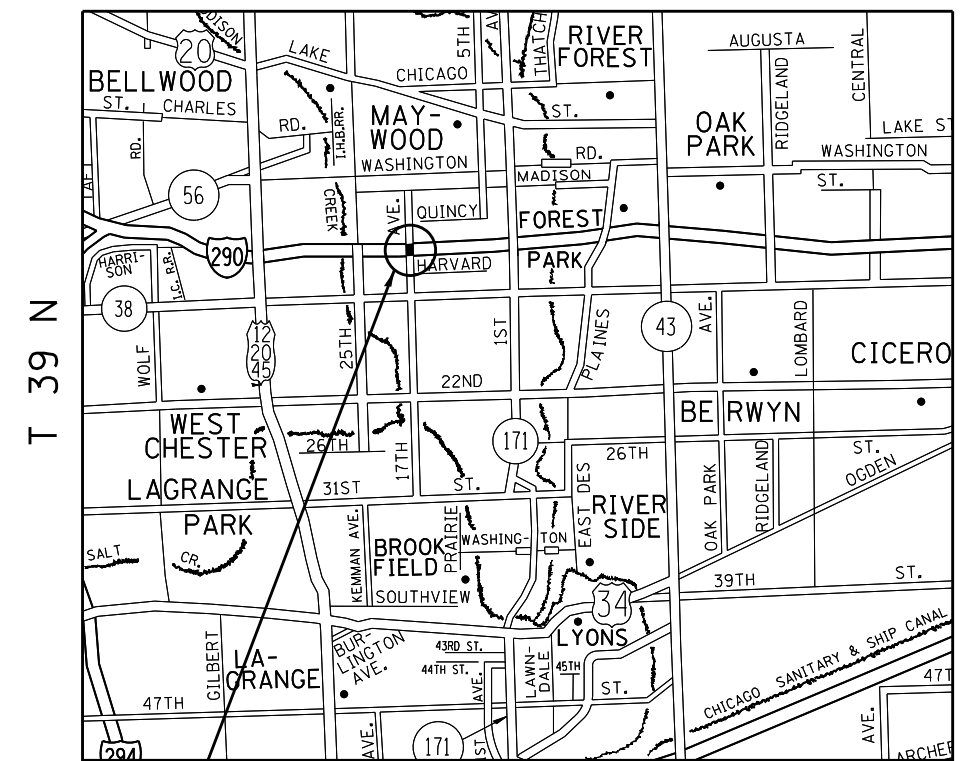
I-290 @ ST. CHARLES RD.
VILLAGE OF BERKELEY
(SN 016-1136)

TRAFFIC DATA: (I-290)
SPEED LIMIT = 55 MPH
2010 ADT = 117,000

TRAFFIC DATA: (ST. CHARLES RD.)
SPEED LIMIT = 45 MPH
2010 ADT = 17,400

LOCATION 3

R 12 E



T 39 N

PROVISO TOWNSHIP

I-290 @ 17TH AVE.
VILLAGE OF BROADVIEW
(SN 016-0694)

TRAFFIC DATA: (I-290)
SPEED LIMIT = 55 MPH
2010 ADT = 167,600

TRAFFIC DATA: (17TH AVE.)
SPEED LIMIT = 30 MPH
2010 ADT = 10,100

FILE NAME :	USER NAME : pyrzanoskirb	DESIGNED -	REVISED -	STATE OF ILLINOIS DEPARTMENT OF TRANSPORTATION	LOCATION MAPS LOCATIONS 1 - 3				F.A.I. RTE.:	SECTION	COUNTY	TOTAL SHEETS	SHEET NO.
ct:\pwork\paidot\pyrzanoskirb\0310238\0141812-sht-plan.dgn	PLOT SCALE = 100.0000' / 1" =	DRAWN -	REVISED -						24 & 290	2012-0241	COOK	13	4
	PLOT DATE = 8/8/2012	CHECKED -	REVISED -		SCALE:	SHEET NO.	OF SHEETS	STA.	TO STA.	FED. ROAD DIST. NO. 1 ILLINOIS FED. AID PROJECT			
		DATE -	REVISED -							CONTRACT NO. 60T69			