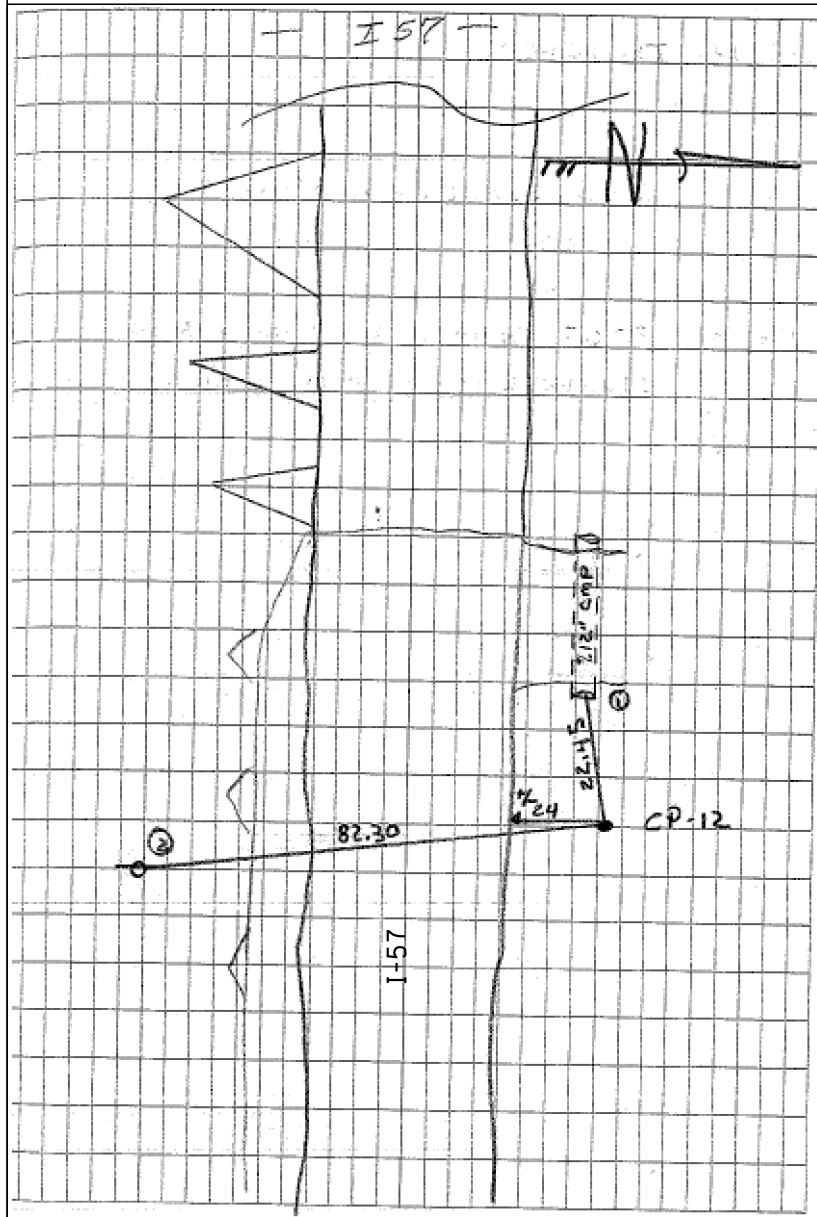




C.P. 12

N: 1,744,954.627  
E: 1,142,729.124  
EL: 760.595



CPT 12 IR W/ CENTER PUNCH

TIE 1 22.45 E. END OF +/- 12" CMP  
ON N. SIDE STUENKEL RD

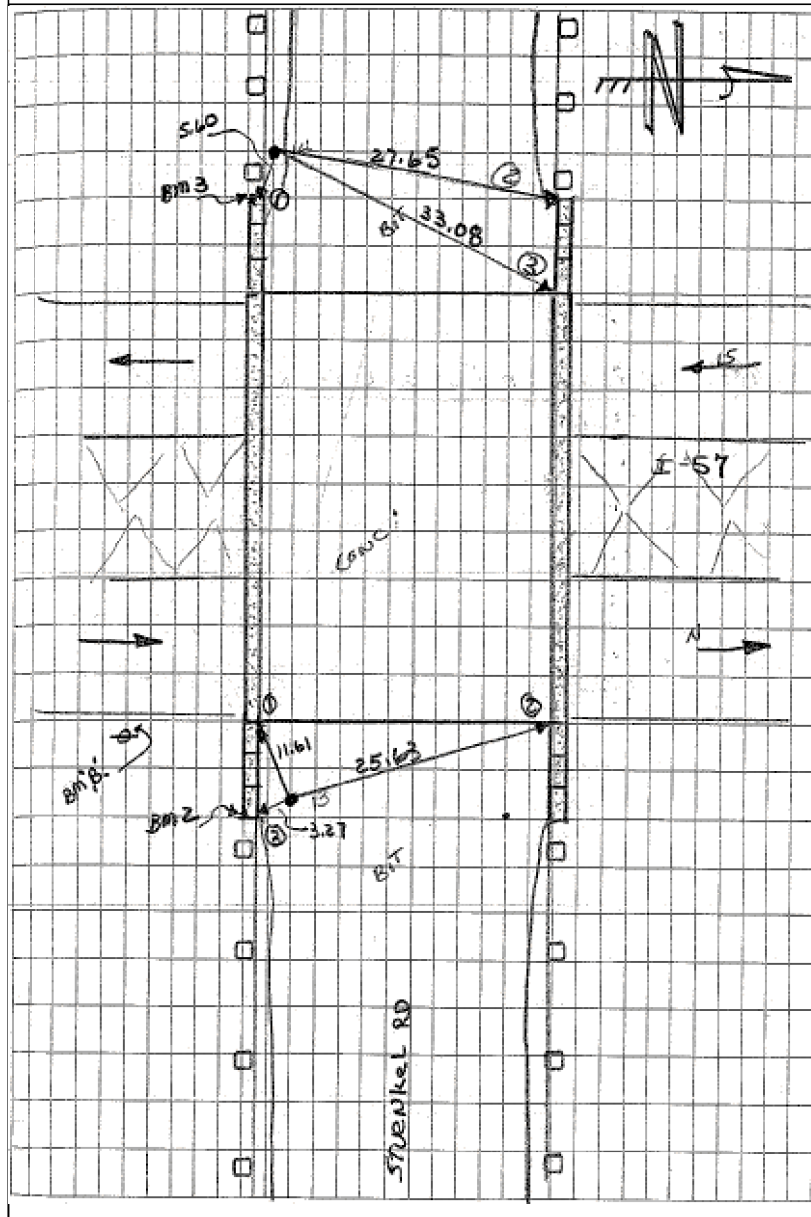
TIE 2 82.30 N. FACE OF PP ON S. SIDE  
STUENKEL RD 4TH POLE E. OF I-57

+/- 24' N. OF EDGE OF GRAVEL RD



C.P. 14

N: 1,744,889.540  
E: 1,141,976.263  
EL: 777.128



CPT 14 FOUND IRC

TIE 1 5.60 NWX OF RET WALL ON S. SIDE  
STUENKEL RD (E. END OF BRIDGE OVER I-57)

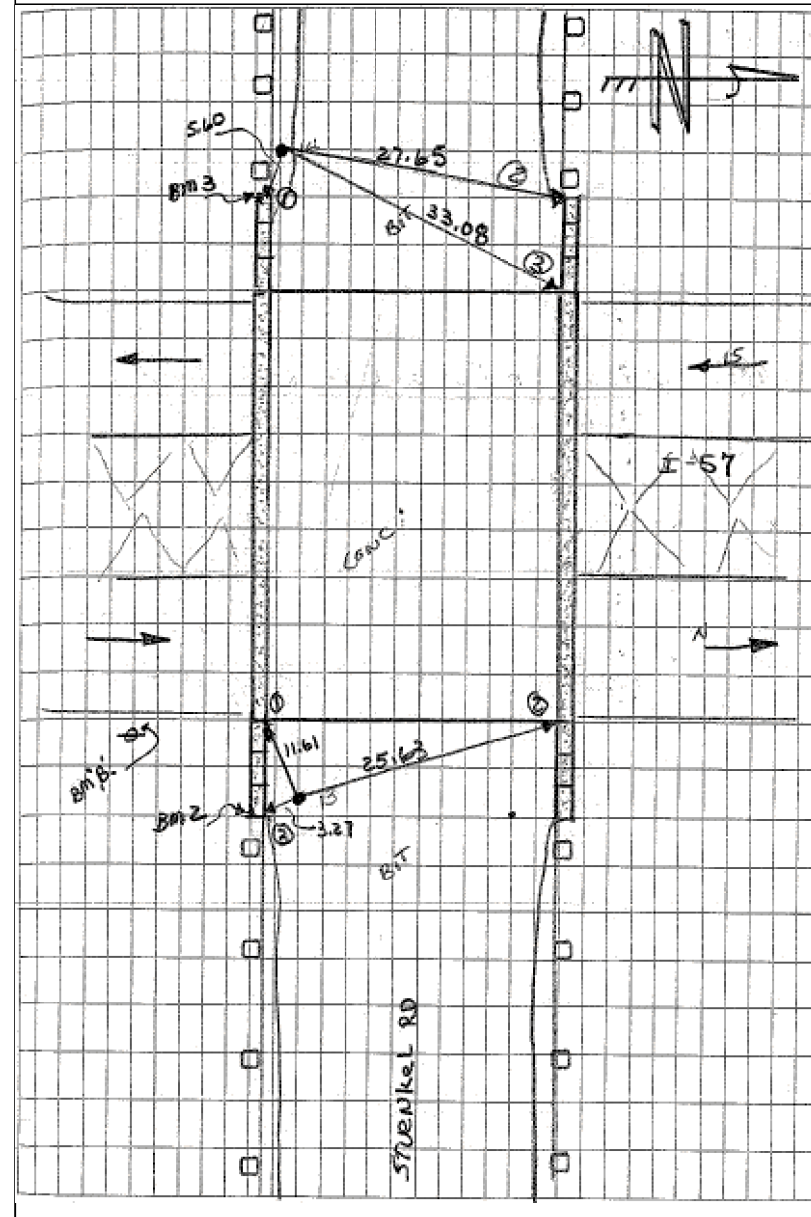
TIE 2 27.65 NWX OF RET WALL ON N. SIDE  
STUENKEL RD. (E. END OF BRIDGE OVER I-57)

TIE 3 33.08 NWX OF BRIDGE DECK



C.P. 13

N: 1,744,895.178  
E: 1,142,227.294  
EL: 777.643



CPT 13 PKN IN BIT PAV

TIE 1 11.61 SEX OF BRIDGE DECK

TIE 2 25.63 NEX OF BRIDGE DECK

TIE 3 3.27 NEX OF RET WALL ON S. SIDE  
STUENKEL RD (W. END OF BRIDGE OVER  
I-57)

TYLIN INTERNATIONAL

USER NAME =	DESIGNED - BES	REVISED -
PLOT SCALE =	DRAWN - BES	REVISED -
PLOT DATE =	CHECKED - JPM	REVISED -
	DATE - 9/19/2012	REVISED - 11/2/2012

STATE OF ILLINOIS  
DEPARTMENT OF TRANSPORTATION

STUENKEL ROAD AT I-57 (HARLEM AVENUE TO RIDGELAND AVENUE)  
SURVEY TIES FOR CONTROL POINTS

SCALE: N.T.S. SHEET 2 OF 5 SHEETS STA. TO STA.

F.A.I. RTE.	SECTION	COUNTY	TOTAL SHEETS	SHEET NO.
57	2012-048R	WILL	206	16
				CONTRACT NO. 60V41
ILLINOIS FED. AID PROJECT				