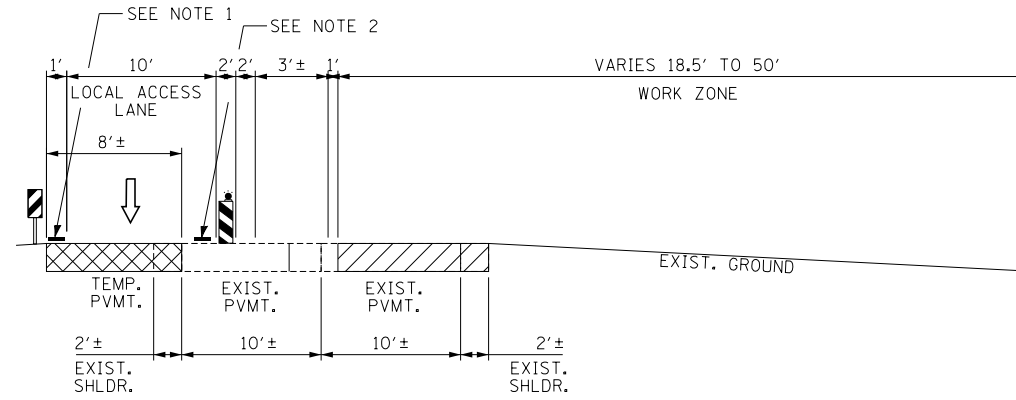
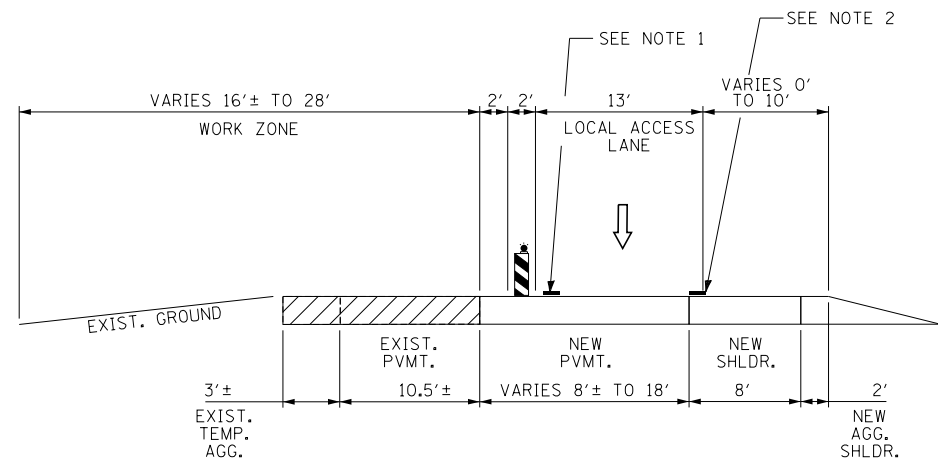


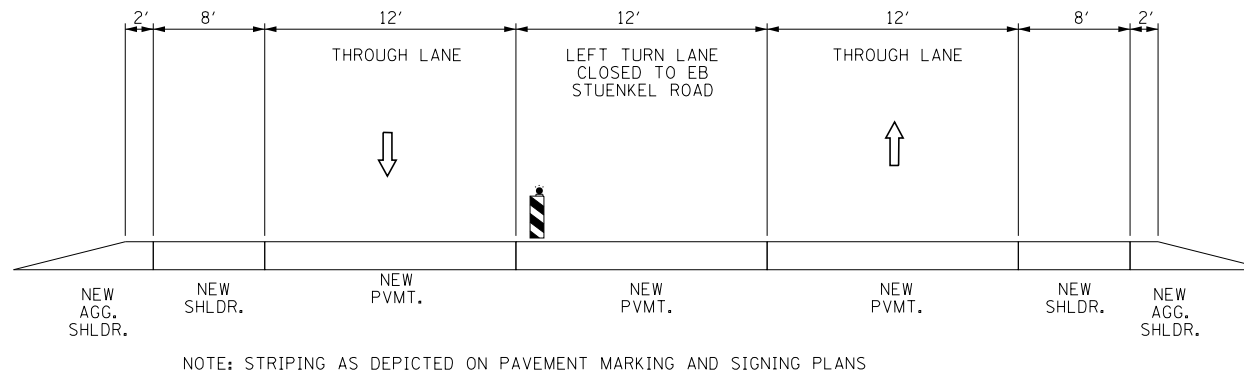
A-A
STAGE 1 - HARLEM AVENUE
STA. 590+00 TO STA. 609+35



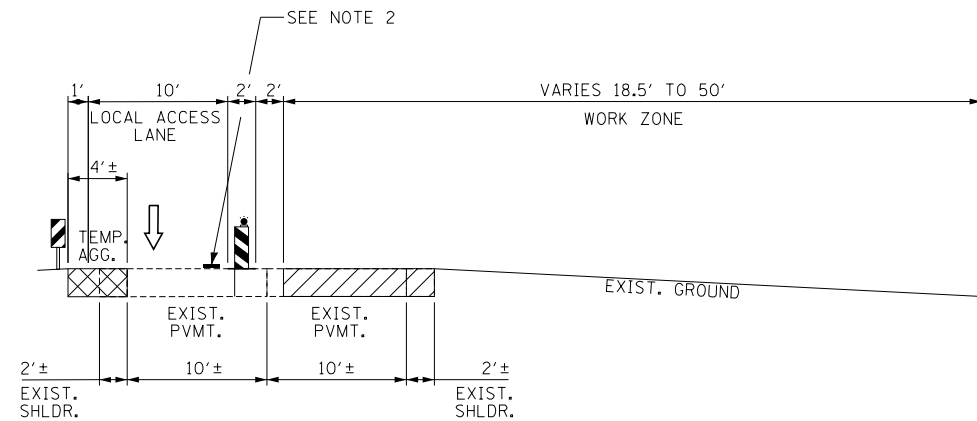
D-D
STAGE 2 - STUENKEL ROAD
STA. 15982+40 TO STA. 15990+00



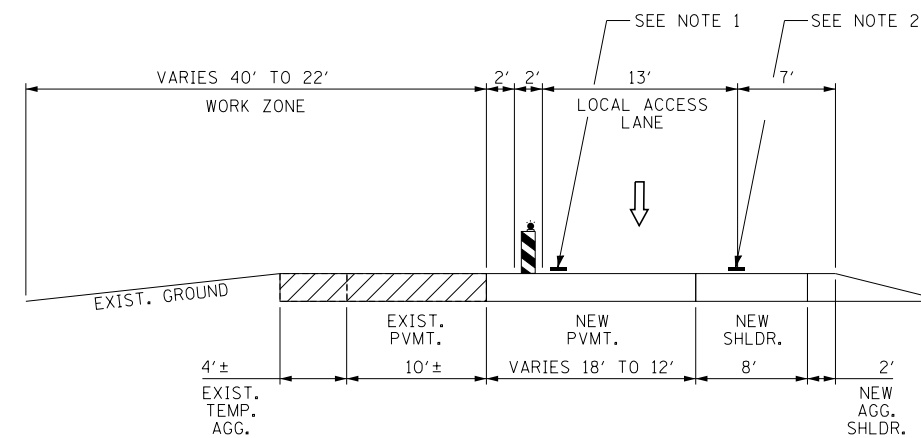
B-B
STAGE 1A - HARLEM AVENUE
STA. 590+00 TO STA. 609+35



E-E
STAGE 2, 2A - HARLEM AVENUE
STA. 600+56 TO STA. 605+86



C-C
STAGE 2 - STUENKEL ROAD
STA. 15941+46 TO STA. 15982+40
STA. 15990+00 TO STA. 16002+00



F-F
STAGE 2A - STUENKEL ROAD
STA. 15952+03 TO STA. 15956+43

- NOTE 1 - PAVEMENT MARKING TAPE, TYPE III 4" LINE (WHITE)
- NOTE 2 - PAVEMENT MARKING TAPE, TYPE III 4" LINE (YELLOW)

LEGEND:

- TRAFFIC MOVEMENT
- VERTICAL PANEL (POST MOUNTED)
- VERTICAL BARRICADE WITH MONO-DIRECTIONAL STEADY BURNING LIGHT
- PAVEMENT MARKING TAPE, TYPE III (SEE PLANS FOR LINE COLOR)

PAVEMENT REMOVAL / WORK ZONE AREA

TEMPORARY PAVEMENT / TEMPORARY AGGREGATE

* ALL MOT TYPICAL SECTIONS ARE DRAWN IN THE DIRECTION OF THE ALIGNMENT

TYLIN INTERNATIONAL

USER NAME =	DESIGNED - JDF	REVISED -
PLOT SCALE =	DRAWN - JDF	REVISED -
PLOT DATE =	CHECKED - JPM	REVISED -
	DATE - 9/19/2012	REVISED - 11/2/2012

STATE OF ILLINOIS
DEPARTMENT OF TRANSPORTATION

STUENKEL ROAD AT I-57 (HARLEM AVENUE TO RIDGELAND AVENUE)
MOT TYPICAL SECTIONS

SCALE: NTS SHEET 1 OF 2 SHEETS STA. TO STA.

F.A.I. RTE.	SECTION	COUNTY	TOTAL SHEETS	SHEET NO.
57	2012-048R	WILL	206	43
CONTRACT NO. 60V41				
ILLINOIS FED. AID PROJECT				