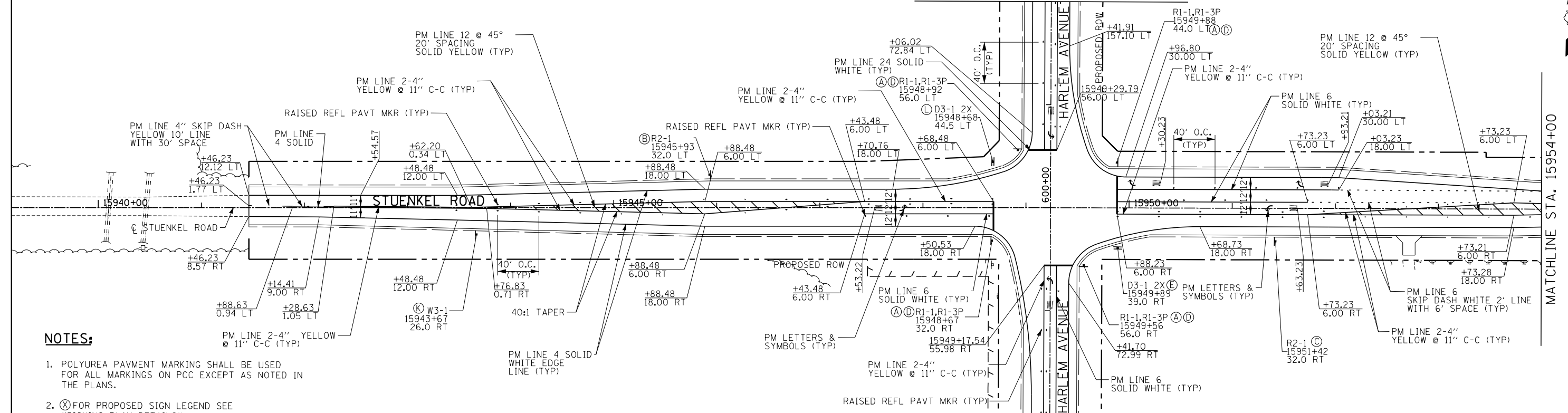
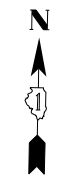


SEE HARLEM AVENUE
PROPOSED PAVEMENT MARKING
AND SIGNING SHEETS

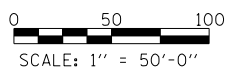
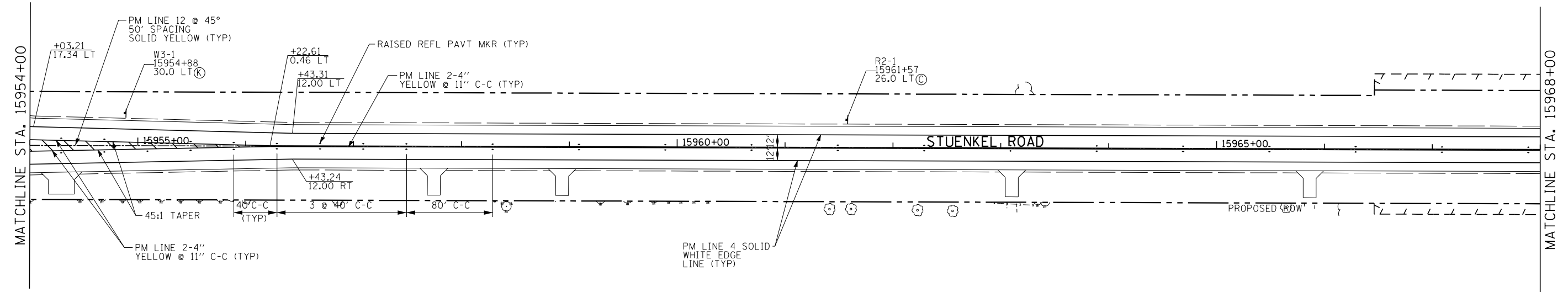


NOTES:

1. POLYUREA PAVEMENT MARKING SHALL BE USED FOR ALL MARKINGS ON PCC EXCEPT AS NOTED IN THE PLANS.
2. (X) FOR PROPOSED SIGN LEGEND SEE "SIGNING PLAN DETAILS"
3. THERMOPLASTIC PAVEMENT MARKINGS WILL BE USED OUTSIDE THE PAVEMENT LIMIT TO CONNECT THE EXISTING PAVEMENT MARKING LINES

SEE HARLEM AVENUE
PROPOSED PAVEMENT MARKING
AND SIGNING SHEETS

MATCHLINE STA. 15954+00



TYLIN INTERNATIONAL USER NAME = PLOT SCALE = PLOT DATE =	DESIGNED - JTP DRAWN - JTP CHECKED - JPM DATE - 9/19/2012	REVISED - REVISED - REVISED - REVISED - 11/2/2012	STATE OF ILLINOIS DEPARTMENT OF TRANSPORTATION STUENKEL ROAD AT I-57 (HARLEM AVENUE TO RIDGELAND AVENUE) PROPOSED PAVEMENT MARKING AND SIGNING PLAN - STUENKEL ROAD SCALE: 1" = 50' SHEET 1 OF 4 SHEETS STA. 15941+46 TO STA. 15968+00	F.A. RTE. 57 SECTION 2012-048R COUNTY WILL TOTAL SHEETS 206 SHEET NO. 96 CONTRACT NO. 60V41 ILLINOIS FED. AID PROJECT