

1-18-13 LETTING ITEM 012

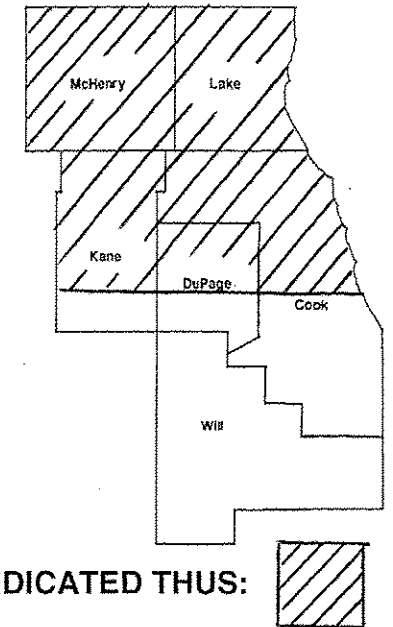
ROUTE	SECTION	COUNTY	TOTAL SHEETS	SHEET NUMBER
VARIOUS	2012-061 I	VARIOUS	9	1

STATE OF ILLINOIS
DEPARTMENT OF TRANSPORTATION
DIVISION OF HIGHWAYS
DISTRICT ONE

PROPOSED HIGHWAY PLANS

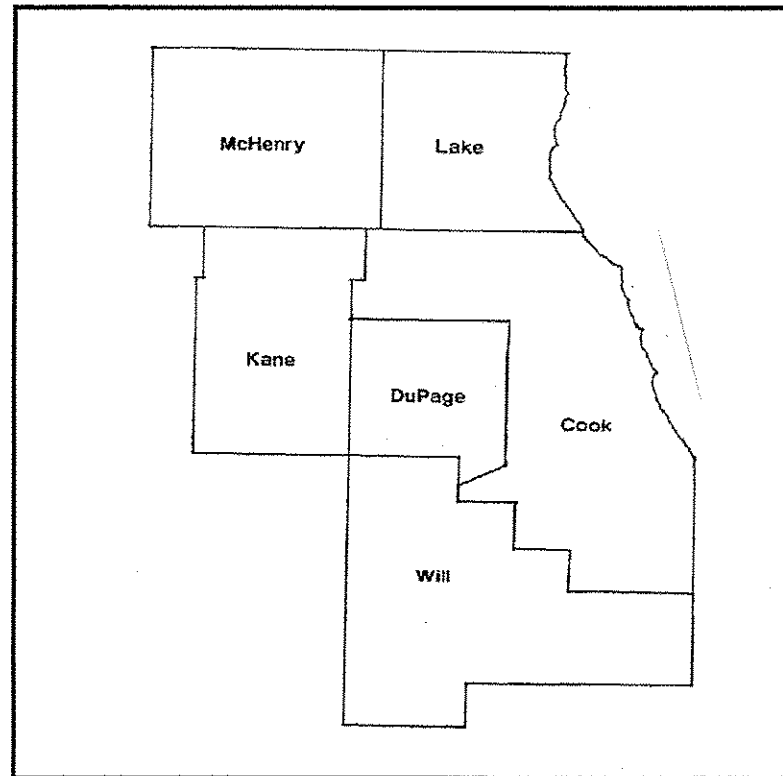
ROUTE: VARIOUS NORTH
SECTION: 2012-061-I
MOWING
VARIOUS COUNTIES
C-91-058-13

CONTRACT 60V69
D-91-058-13



LOCATION OF IMPROVEMENT INDICATED THUS: 

IMPROVEMENT IS IN VARIOUS
LOCATIONS WITHIN DISTRICT
ONE



STATE OF ILLINOIS
DEPARTMENT OF TRANSPORTATION
DIVISION OF HIGHWAYS

SUBMITTED: *October 31* 20 *12*

John F. ...
DEPUTY DIRECTOR OF HIGHWAYS, REGION ENGINEER

Dec 7 20 *12*
John D. Baranzelli, PE
acting ENGINEER OF DESIGN AND ENVIRONMENT

Dec 7 20 *12*
William R. Frey, Jr
acting DIRECTOR OF HIGHWAYS, CHIEF ENGINEER

**PRINTED BY THE AUTHORITY
OF THE STATE OF ILLINOIS**

J.U.L.I.E.: JOINT UTILITY LOCATION
INFORMATION FOR EXCAVATION
(800) 892-0123 OR 811

DISTRICT ONE BUREAU OF MAINTENANCE: J. STUMPNER
MAINTENANCE LANDSCAPE DESIGNER: R. WANNER / T. JACKSON (847) 705-4171

CONTRACT 60V69

ROUTE	SECTION	COUNTY	TOTAL SHEETS	SHEET NUMBER
VARIOUS	2012-0611	VARIOUS	9	2

CONTRACT 60V69

INDEX OF SHEETS

- 1) COVER SHEET
- 2) INDEX OF SHEETS
- 3) SUMMARY OF QUANTITIES, STATE STANDARDS
- 4) SAMPLE WORK ORDER
- 5) MOWING MAP TYPICAL
- 6) TRIMMING DETAIL
- 7) MOWING DETAIL #1-3
- 8) MOWING DETAIL #4-5
- 9) TC-17 TRAFFIC CONTROL DETAIL FOR FREEWAY SHOULDER CLOSURES AND PARTIAL RAMP CLOSURES

STATE STANDARDS

701011-03

701101-03

701311-03

701426-05

701901-03

ILLINOIS DEPARTMENT OF TRANSPORTATION
MOWING
INDEX OF SHEETS

ROUTE	SECTION	COUNTY	TOTAL SHEETS	SHEET NUMBER
VARIOUS	2012-0611	VARIOUS	9	3

CONTRACT 60V69

SUMMARY OF QUANTITIES


PAY ITEM	DESCRIPTION	UNIT	100% STATE	
			CONTRACT MAINT FUND	TOTAL URBAN
			0031	
25000750	MOWING	ACRE	520	520
67100100	MOBILIZATION	L SUM	1	1

ILLINOIS DEPARTMENT OF TRANSPORTATION

MOWING

SUMMARY OF QUANTITIES
STATE STANDARDS

ROUTE VARIOUS	SECTION 2012-061 I	COUNTY VARIOUS	TOTAL SHEETS 9	SHEET NUMBER 4
-------------------------	------------------------------	--------------------------	--------------------------	--------------------------

 Illinois Department of Transportation	Contract Number: _____
	Mowing Work Order Number: _____
	Route: _____

CONTRACT 60V69

30-Day Completion Work Order

Cook	DuPage	Kane	Work Order Prepared By	Team Section
Lake	McHenry	Will		

Location:

Refer to attached mow maps, which are hereby made a part of this work order (_____ sheets)

WORK INCLUDED IN THIS WORK ORDER			
Item	Mow Map Qty		
Mowing		acres	

AGREEMENT TO ACCURACY OF WORK ORDER QUANTITIES

The Contractor and Engineer hereby agree that when the work is completed essentially to the lines and dimensions given, no further measurement will be required for any of the above items. Payment will be made for the work order quantities shown.

Engineer Signature and Date

Contractor Signature and Date

AUTHORIZATION OF WORK ORDER

Technician Signature

Start Date _____ Completion Date _____

CERTIFICATION OF COMPLETION

Contractor Signature

Date

Number of 33 gallon bags filled with litter and debris _____

ACCEPTANCE OF COMPLETED WORK

I certify that the work order has been completed in conformance with contract requirements.

Resident Engineer/Technician Signature

Date

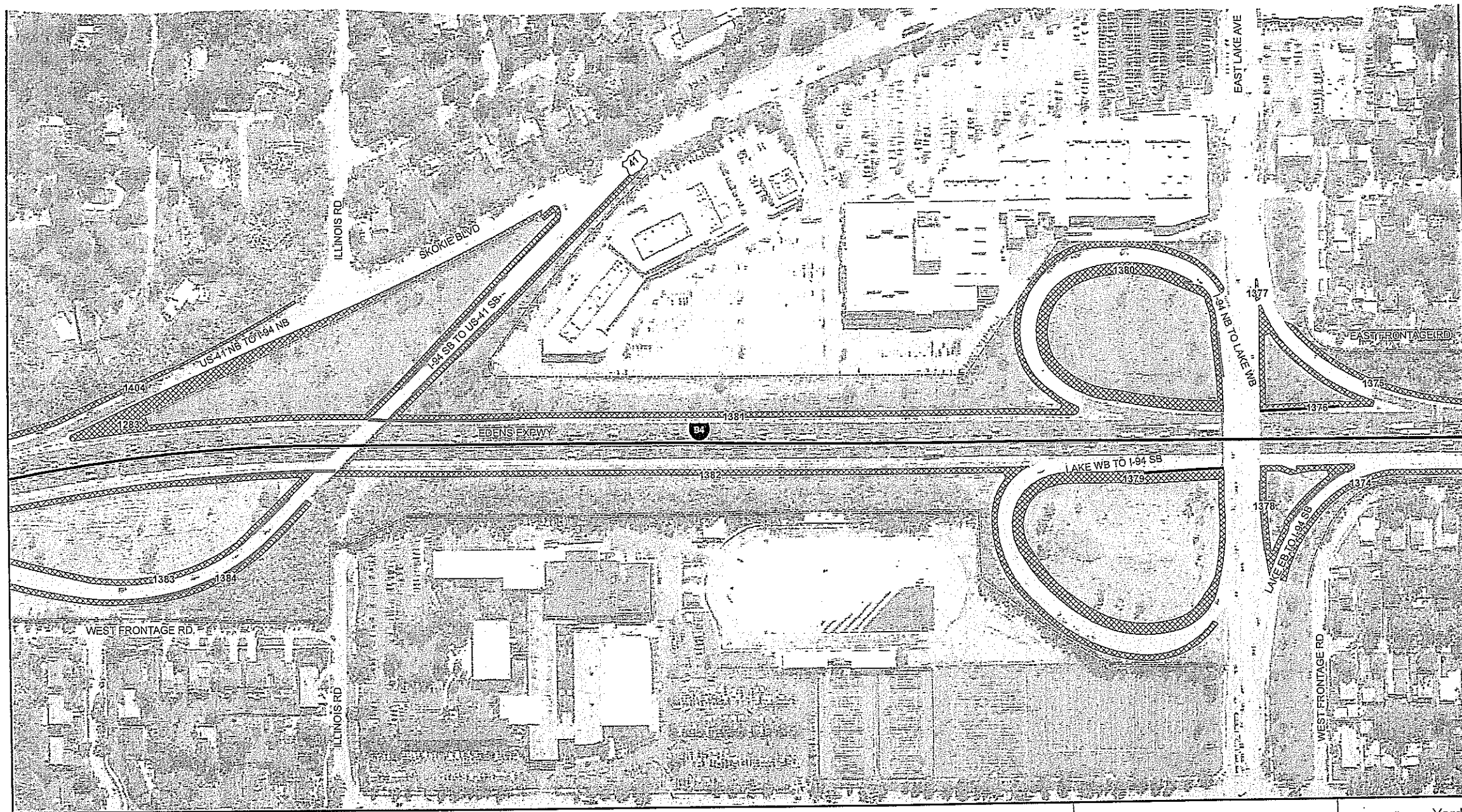
ILLINOIS DEPARTMENT OF TRANSPORTATION

MOWING

SAMPLE WORK ORDER

ROUTE	SECTION	COUNTY	TOTAL SHEETS	SHEET NUMBER
VARIOUS	2012-061 I	VARIOUS	9	5

CONTRACT 60V69



STATE OF ILLINOIS DEPARTMENT OF TRANSPORTATION LANDSCAPE MAINTENANCE	0 100 200 Feet		STRUCTURES Guardrail Sound Wall Concrete Barrier Wall Other Wall Fence	MOWING Mowing (Acre)	WEED CONTROL	WEED CONTROL	Map Prepared by: Team Section: E13 - Edens Route: FAI-94 Panel Number: E13-FAI-94-09	Contract #: Yard Work Order #: Y01 Sheet #: 16 of 31
			DZIMOMI					

ILLINOIS DEPARTMENT OF TRANSPORTATION

MOWING

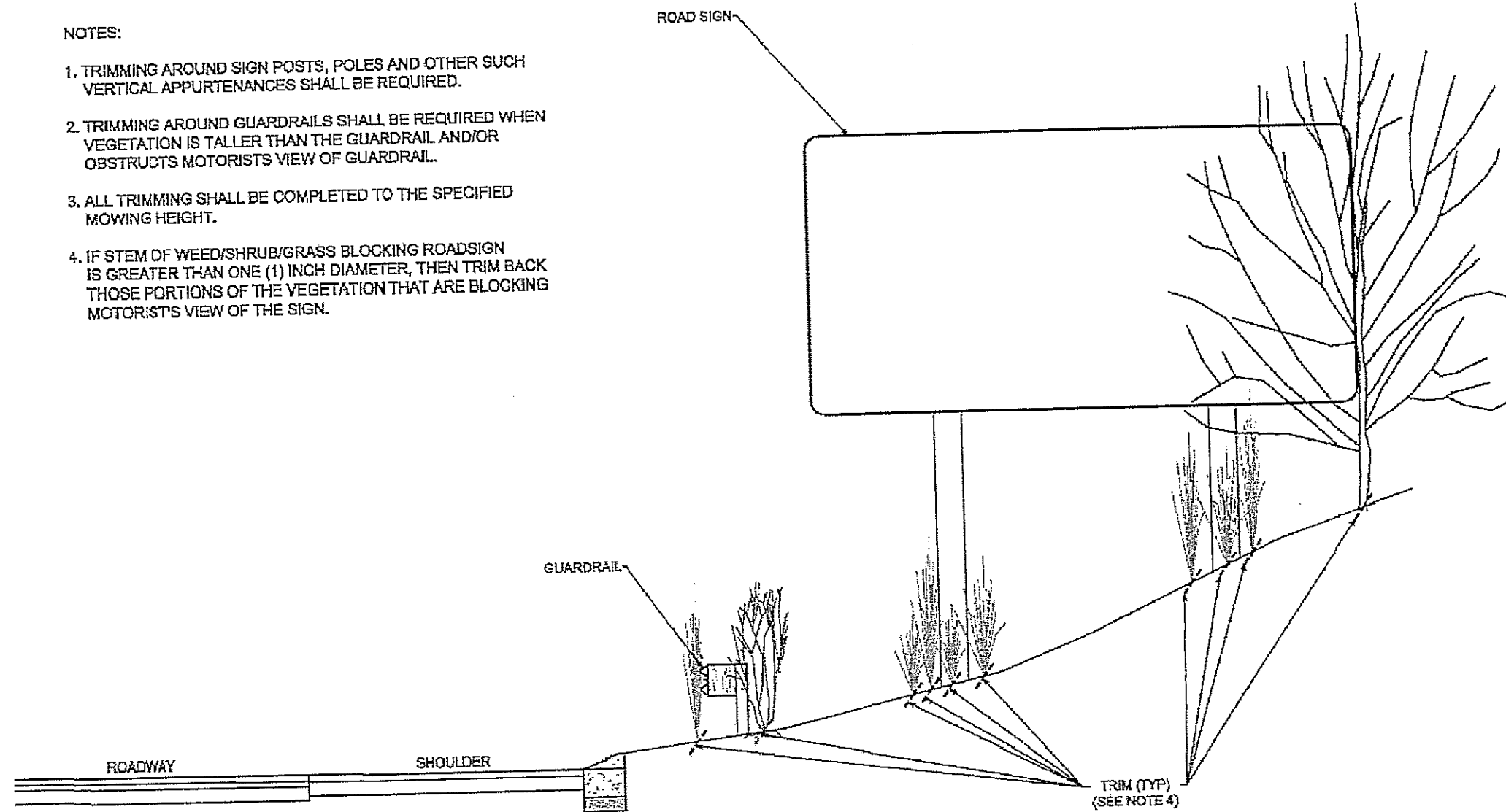
MOWING MAP TYPICAL

ROUTE	SECTION	COUNTY	TOTAL SHEETS	SHEET NUMBER
VARIOUS	2012-061 I	VARIOUS	9	6

CONTRACT 60V69

NOTES:

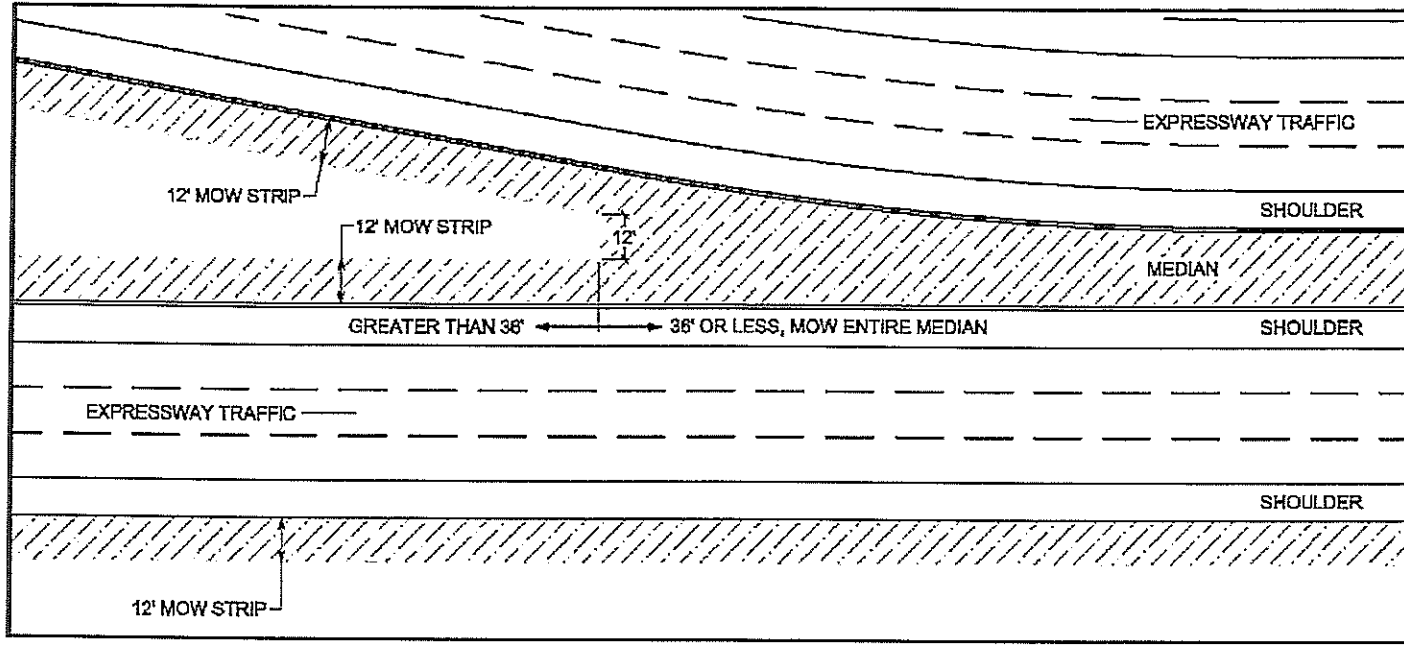
1. TRIMMING AROUND SIGN POSTS, POLES AND OTHER SUCH VERTICAL APPURTENANCES SHALL BE REQUIRED.
2. TRIMMING AROUND GUARDRAILS SHALL BE REQUIRED WHEN VEGETATION IS TALLER THAN THE GUARDRAIL AND/OR OBSTRUCTS MOTORISTS VIEW OF GUARDRAIL.
3. ALL TRIMMING SHALL BE COMPLETED TO THE SPECIFIED MOWING HEIGHT.
4. IF STEM OF WEED/SHRUB/GRASS BLOCKING ROADSIGN IS GREATER THAN ONE (1) INCH DIAMETER, THEN TRIM BACK THOSE PORTIONS OF THE VEGETATION THAT ARE BLOCKING MOTORIST'S VIEW OF THE SIGN.



Mowing Detail
Not to Scale Trimming

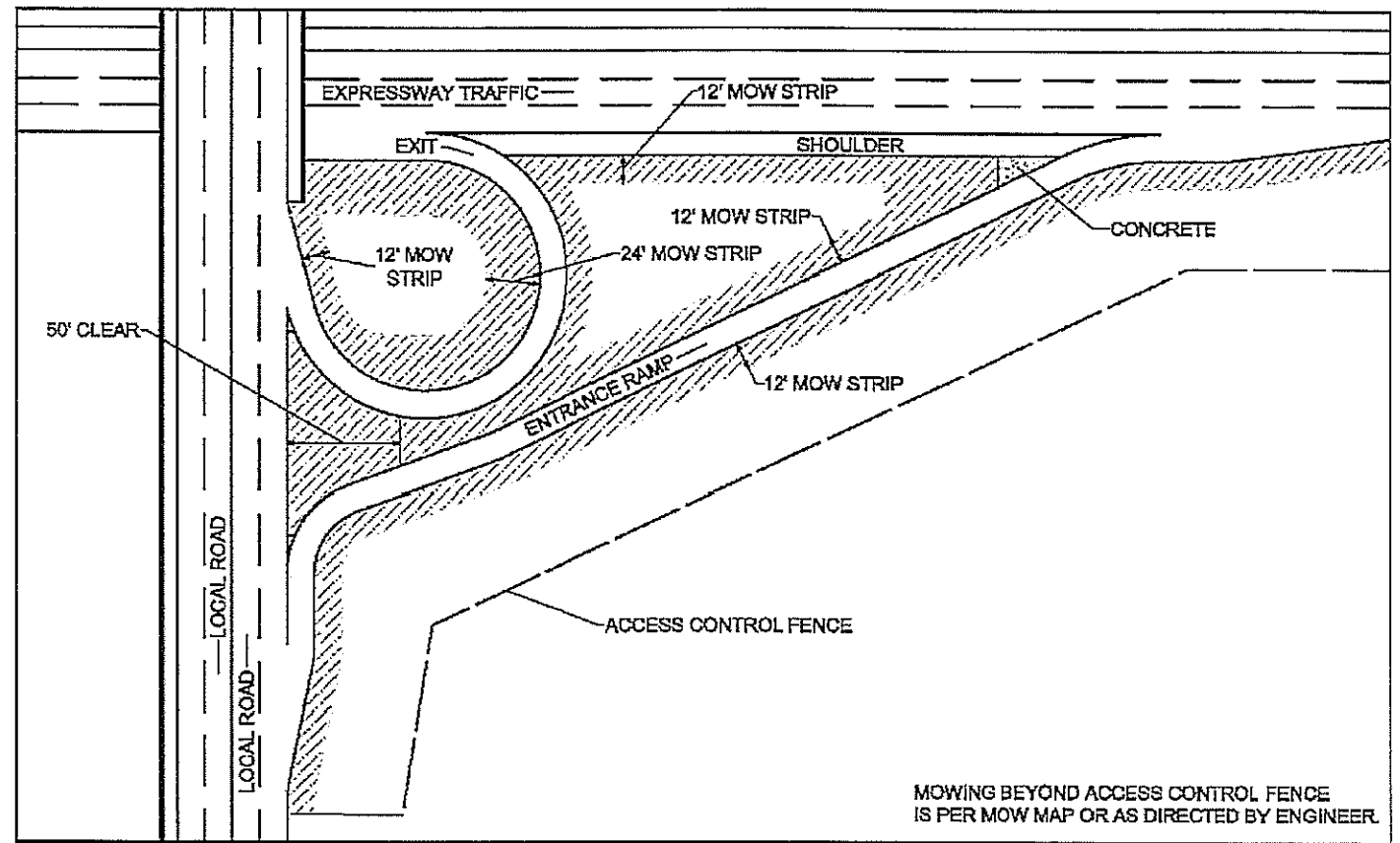
ILLINOIS DEPARTMENT OF TRANSPORTATION
MOWING
TRIMMING DETAIL

ROUTE	SECTION	COUNTY	TOTAL SHEETS	SHEET NUMBER
VARIOUS	2012-061 I	VARIOUS	9	7



Mowing Detail #1

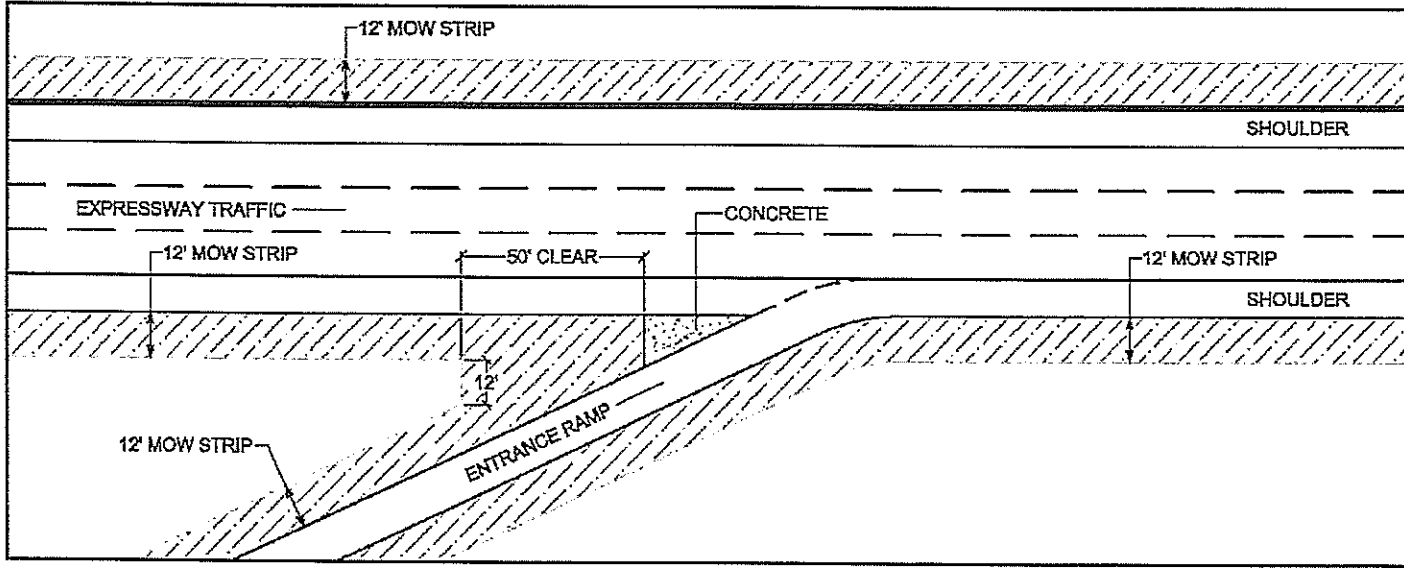
Not to Scale Medians



Mowing Detail #2

Not to Scale Circular Ramp and Local Road

MOWING BEYOND ACCESS CONTROL FENCE IS PER MOW MAP OR AS DIRECTED BY ENGINEER.



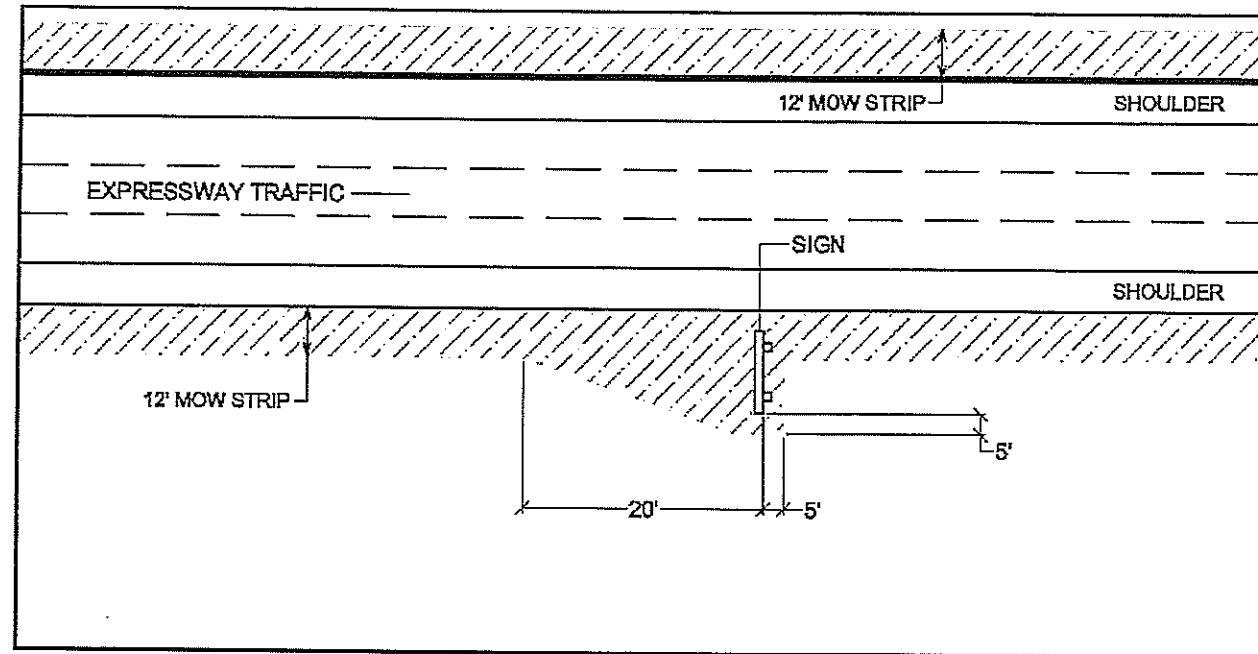
Mowing Detail #3

Not to Scale Straight Merge Ramp

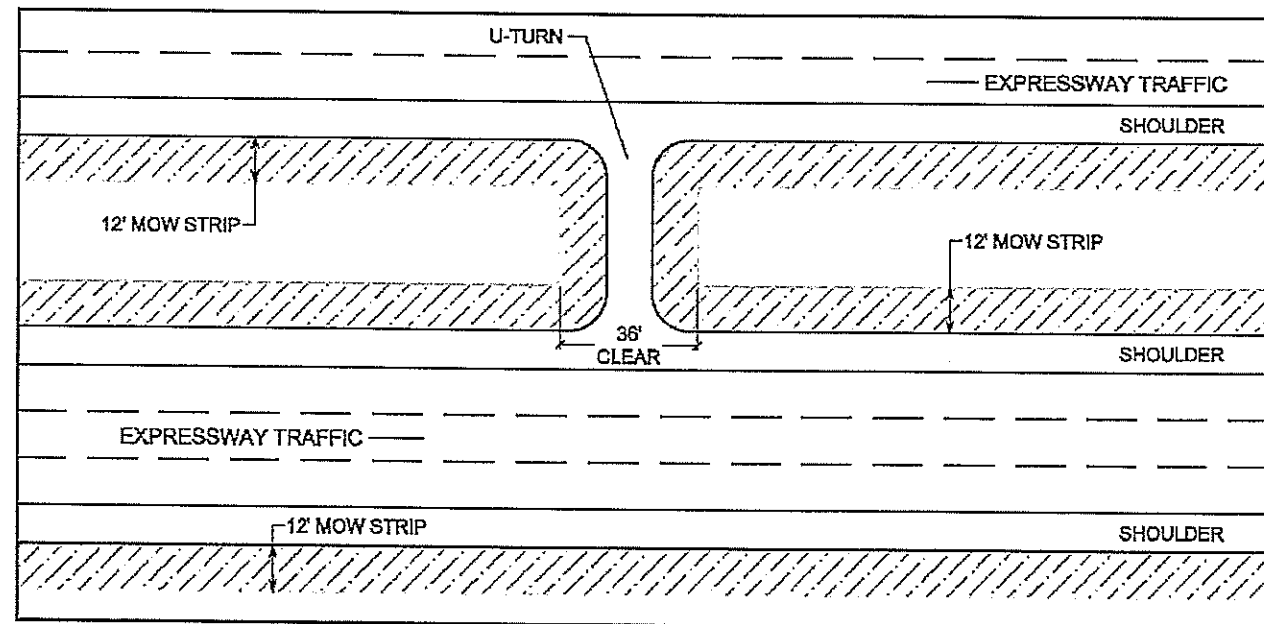
ILLINOIS DEPARTMENT OF TRANSPORTATION
MOWING
MOWING DETAILS #1 #2 & #3

ROUTE	SECTION	COUNTY	TOTAL SHEETS	SHEET NUMBER
VARIOUS	2012-061 I	VARIOUS	9	8

CONTRACT 60V69



Not to Scale Mowing Detail #4
Roadway Signs



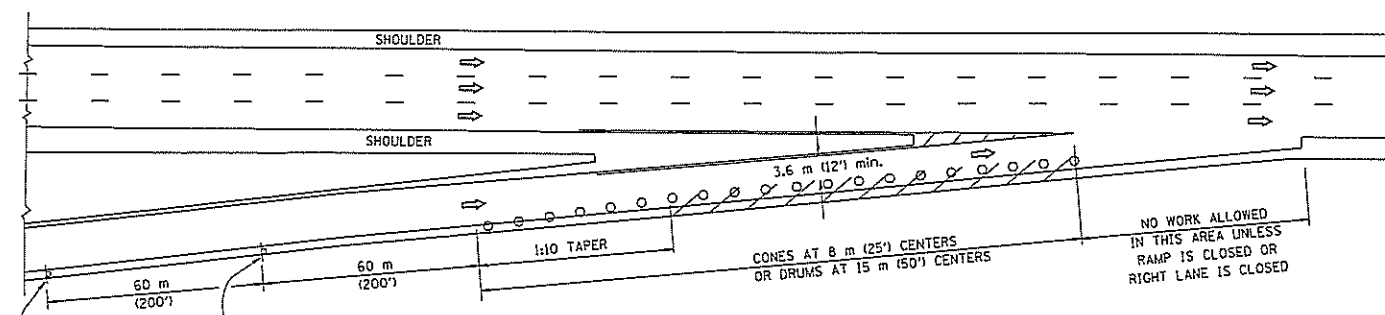
Not to Scale Mowing Detail #5
U-Turns

ILLINOIS DEPARTMENT OF TRANSPORTATION
MOWING
MOWING DETAILS #4 & #5

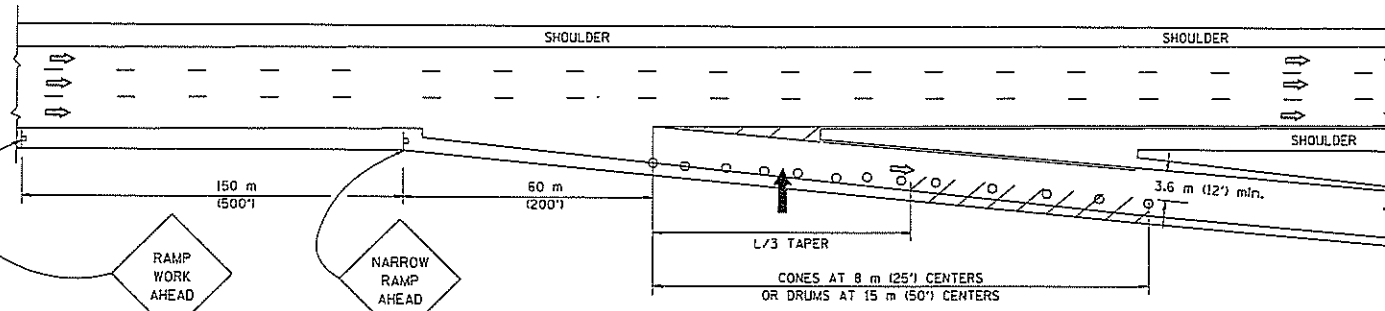
PARTIAL RAMP CLOSURE DETAILS

SHOULDER CLOSURE DETAILS

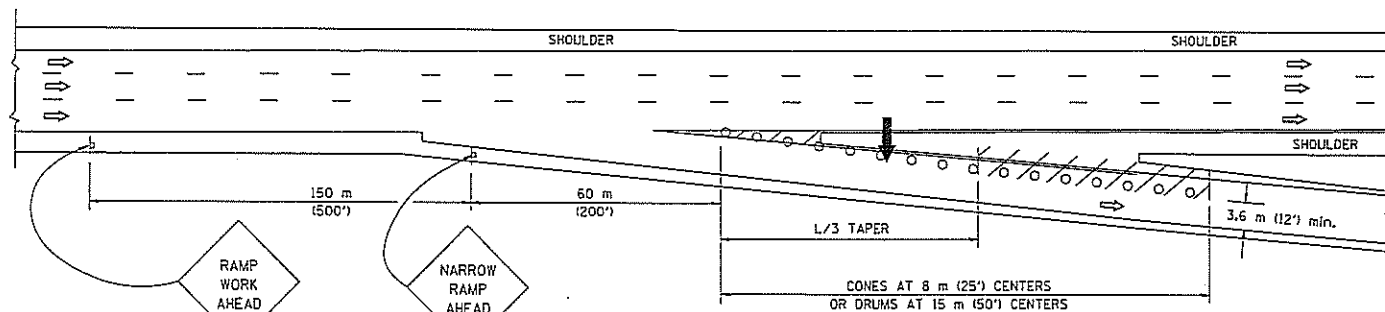
F.A. RTE.	SECTION	COUNTY	TOTAL SHEETS	SHEET NO.
2012-0611	VAR	9	9	
STA.	TO STA.			
FED. ROAD DIST. NO.	ILLINOIS	FED. AID PROJECT		



TYPICAL ENTRANCE RAMP



TYPICAL EXIT RAMP



TYPICAL EXIT RAMP

SYMBOLS

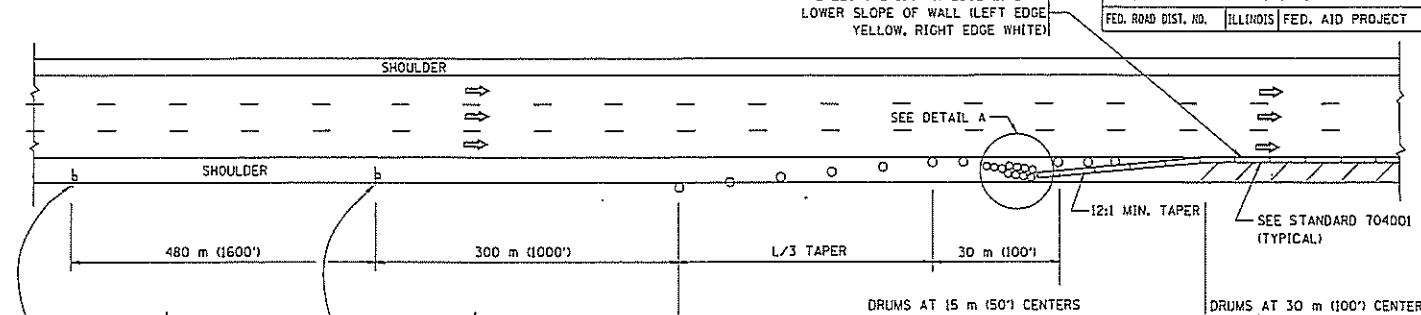
- ARROWBOARD
- WORK AREA
- SIGN ON PORTABLE OR PERMANENT SUPPORT
- FLAGGER WITH CONTROL SIGN
- DRUM WITH MONO-DIRECTIONAL STEADY BURNING LIGHT
- CONES - 700 (28) IN HEIGHT

GENERAL NOTES

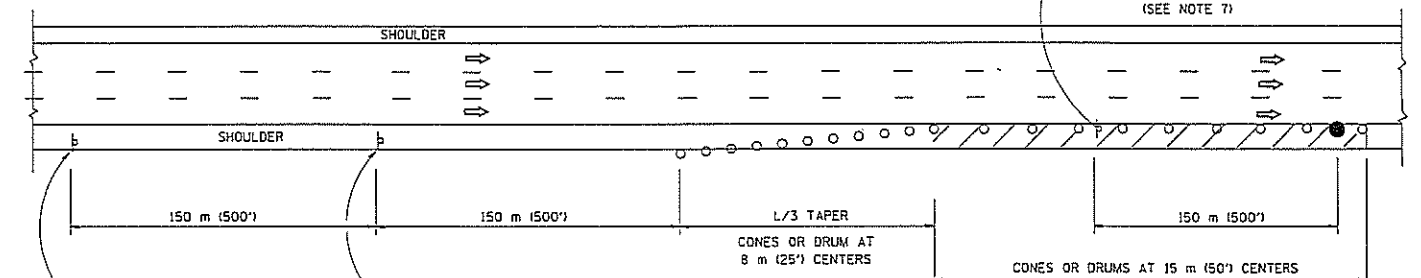
1. THE "L" DISTANCE EQUALS:

SPEED LIMIT	FORMULAS
80 km/h (45 mph) OR GREATER:	METRIC ENGLISH
	$L=0.65(W)(S)$ $L=(W)(S)$

W = WIDTH OF OFFSET IN METERS (FEET)
 S = NORMAL POSTED SPEED KM/H (MPH)
2. PLASTIC DRUMS WITH HIGH PERFORMANCE REFLECTIVE SHEETING AND STEADY BURNING LIGHTS ARE REQUIRED FOR ALL NIGHTTIME CLOSURES.
3. ALL SIGNS SHALL BE POST MOUNTED IF THE CLOSURE TIME EXCEEDS FOUR DAYS.
4. FLASHING LIGHTS SHALL BE USED DURING THE HOURS OF DARKNESS AND SHALL BE INSTALLED ABOVE THE FIRST TWO SETS OF SIGNS.

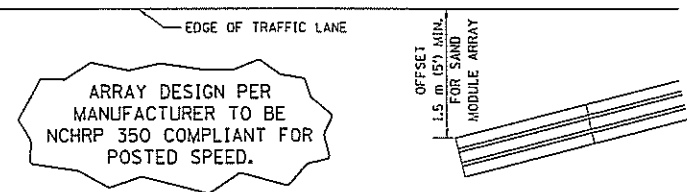


PERMANENT SHOULDER CLOSURE



DAYTIME SHOULDER CLOSURE

THIS DETAIL IS USED WHERE:
 1. VEHICLES, EQUIPMENT, WORKERS OR THEIR ACTIVITIES ENCR OACH IN AN AREA CLOSER THAN 4.5 m (15') TO THE EDGE OF PAYEMENT FOR A PERIOD IN EXCESS OF 15 MINUTES.



DETAIL "A"
 IMPACT ATTENUATOR, TEMPORARY
 (SEE NOTE 5)

ALL DIMENSIONS ARE IN MILLIMETERS (INCHES) UNLESS OTHERWISE SHOWN.

REVISIONS	
NAME	DATE
DWS	11/95
JAF	12/02
NCHRP 350	04/03
JAF	2/06

ILLINOIS DEPARTMENT OF TRANSPORTATION
 TRAFFIC CONTROL DETAILS
 FOR FREEWAY
 SHOULDER CLOSURES
 PARTIAL RAMP CLOSURES

SCALE: NONE
 DATE: 3/1/2006

DESIGNED BY: DWS
 DRAWN BY:
 CHECKED BY:
 TC-17