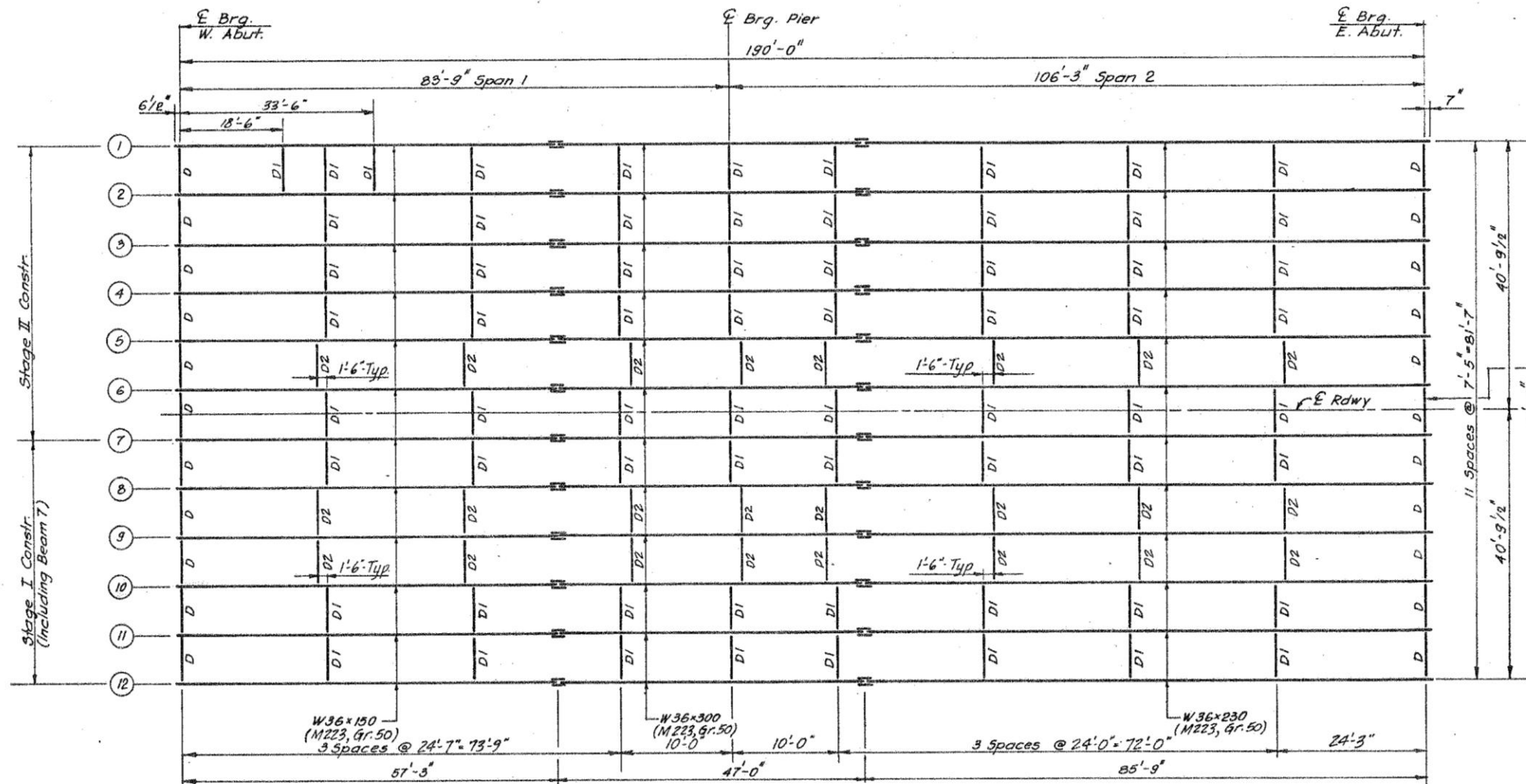
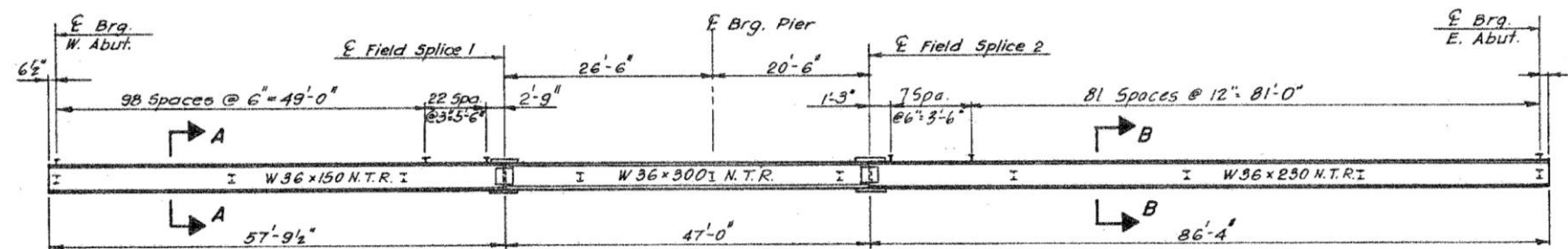


ROUTE	SECTION	COUNTY	TOTAL SHEETS	SHEET NUMBER
VARIOUS	2012-076BP	COOK	34	29

CONTRACT NO. 60V86



FRAMING PLAN



ELEVATION

Diaphragm

D = W12 X 40

**ILLINOIS DEPARTMENT OF
TRANSPORTATION**

**EXISTING BRIDGE PLAN
LOCATION 5
SN 016-0478**

Roosevelt Rd. over I-90/94 Dan Ryan