

PROPOSED HIGHWAY PLANS

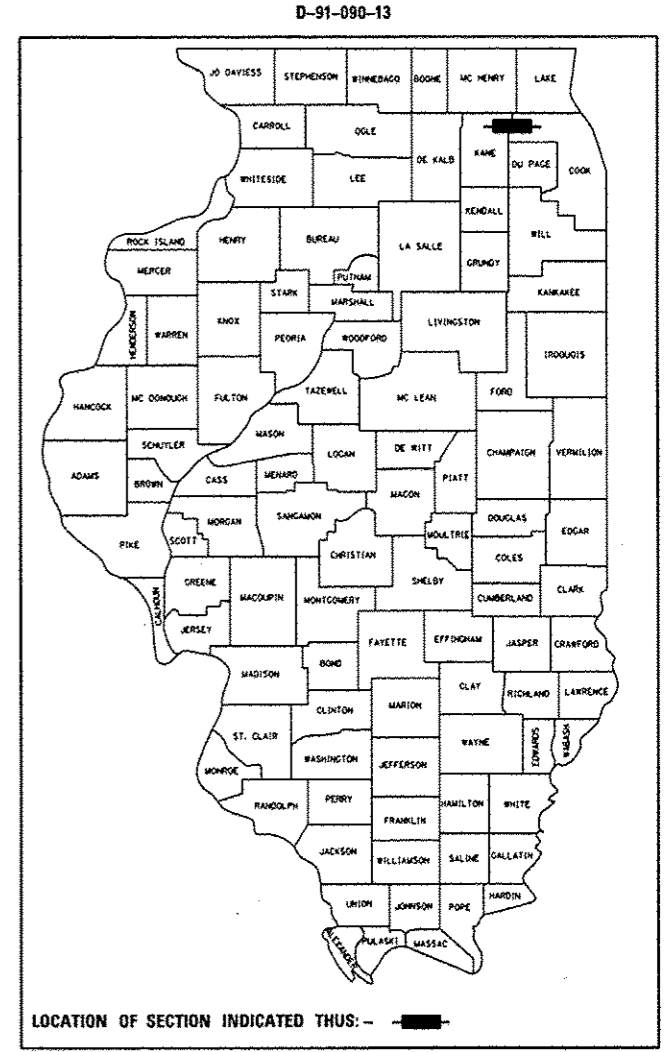
FAP ROUTE 345: US 20
VARIOUS LOCATIONS
SECTION: 2012-77BP
BRIDGE PAINTING
COOK & KANE COUNTIES

C-91-090-13

FOR INDEX OF SHEETS, SEE SHEET NO. 2

F.A.P. RTE.	SECTION	COUNTY	TOTAL SHEETS	SHEET NO.
345	2012-77BP	COOK & KANE	19	1
		ILLINOIS	CONTRACT NO. 60V88	

IMPROVEMENTS ARE LOCATED IN THE CITY OF ELGIN



- LOCATION 1) SN 016-0217 US 20 OVER POPLAR CR
- LOCATION 2) SN 016-0218 US 20 WB OVER US 20 (VILLA ST.)
- LOCATION 3) SN 045-0008 US 20 EB (LARKIN AVE.) OVER US 20 WB

FOR LOCATION MAPS SEE SH 5 & 6.

J.U.L.I.E.
JOINT UTILITY LOCATION INFORMATION FOR EXCAVATION
1-800-892-0123
OR 811

PROJECT ENGINEER ROBERT BORO (847) 705-4237
PROJECT MANAGER ISSAM RAYYAN

CONTRACT NO. 60V88

STATE OF ILLINOIS
DEPARTMENT OF TRANSPORTATION
DIVISION OF HIGHWAYS

SUBMITTED October 19 2012
John Fustmann
DEPUTY DIRECTOR OF HIGHWAYS, REGION ENGINEER

Dec 7 2012
John D. Baranowski P.E.
ENGINEER OF DESIGN AND ENVIRONMENT

Dec 7 2012
William B. Freese
DIRECTOR OF HIGHWAYS, CHIEF ENGINEER

PRINTED BY THE AUTHORITY OF THE STATE OF ILLINOIS

INDEX OF SHEETS

SHEET NO.	DESCRIPTION
1	COVER SHEET
2	GENERAL NOTES/INDEX OF SHTS/STATE STDS
3	PAINTING GENERAL NOTES
4	SUMMARY OF QUANTITIES
5-6	LOCATION MAPS
7-10	BRIDGE PAINTING LOCATION 1 (SN 016-0217)
11-12	BRIDGE PAINTING LOCATION 2 (SN 016-0218)
13-17	BRIDGE PAINTING LOCATION 3 (SN 045-0008)
18	TRAFFIC CONTROL FOR SHOULDER CLOSURE & PARTIAL RAMP CLOSURE (TC-17)
19	ARTERIAL ROAD INFORMATION (TC-22)

STATE STANDARDS

STD. NO.	DESCRIPTION
701006-04	OFF-RD OPERATIONS, 2L, 2W, 15' TO 24' FROM PAVEMENT EDGE
701101-03	OFF-RD OPERATIONS, MULTILANE, 15' (4.5 m) TO 24" (600 mm) FROM PAVEMENT EDGE
701421-05	LANE CLOSURE, MULTILANE, DAY OPERATIONS ONLY, FOR SPEEDS \geq 45 MPH TO 55 MPH
701901-03	TRAFFIC CONTROL DEVICES

GENERAL NOTES

BEFORE STARTING ANY EXCAVATION, THE CONTRACTOR SHALL CALL "JULIE" AT 800-892-0123 FOR FIELD LOCATIONS OF BURIED ELECTRIC, TELEPHONE AND GAS FACILITIES. (48 HOUR NOTIFICATION IS REQUIRED).

THE CONTRACTOR SHALL COORDINATE CONSTRUCTION ACTIVITIES WITH UTILITY COMPANIES AND THE CITY OF ELGIN.

THE CONTRACTOR WILL NOT BE ALLOW TO SET UP A YARD OF FIELD OFFICE ON STATE PROPERTY WITHOUT WRITTEN PERMISSION FROM THE DEPARTMENT.

THE CONTRACTOR SHALL CONTACT THE DISTRICT ONE TRAFFIC CONTROL SUPERVISOR AT (847) 705-4151 A MINIMUM OF 72 HOURS IN ADVANCE OF BEGINNING WORK.

IT SHALL BE THE CONTRACTORS' RESPONSIBILITY TO VERIFY ALL DIMENSIONS & CONDITIONS EXISTING IN THE FIELD PRIOR TO CONSTRUCTION & ORDERING OF MATERIAL.

THE CONTRACTOR SHALL BE REQUIRED TO PROVIDE ACCESS TO ABUTTING PROPERTY AT ALL TIMES DURING THE CONSTRUCTION OF THIS PROJECT.

DO NOT SCALE PLANS FOR CONSTRUCTION DIMENSIONS.

THESE PLANS HAVE BEEN PREPARED FROM NOTES RECEIVED FROM THE BUREAU OF MAINTENANCE, BRIDGE INSPECTORS.

IT SHALL BE THE CONTRACTOR'S RESPONSIBILITY TO PROTECT AND PRESERVE THE EXISTING BRIDGE LIGHTING AT ANY LOCATIONS THAT LIGHTING IS ENCOUNTERED ADJACENT TO AN AREA TO BE CLEANED AND PAINTED.

FOR LOCATION 2 (SN 016-0218) TRAFFIC CONTROL ON VILLA ST. SHALL BE DONE PER DISTRICT ONE TRAFFIC CONTROL (TC-17).

FILE NAME *	USER NAME * hongo	DESIGNED -	REVISED -	STATE OF ILLINOIS DEPARTMENT OF TRANSPORTATION	INDEX OF SHEETS, LIST OF STATE STANDARDS, AND GENERAL NOTES	F.A.P. RTE.	SECTION	COUNTY	TOTAL SHEETS	SHEET NO.
c:\pwork\pwork\hongo\0219419\0101012	sht-plen.dgn	DRAWN -	REVISED -			345	2012-077BP	COOK & KANE	19	2
#MODELNAME*	PLOT SCALE * 100.0000 / / in.	CHECKED -	REVISED -					CONTRACT NO. 60VBB		
	PLOT DATE * 11/9/2012	DATE -	REVISED -		SCALE:	SHEET	OF	SHEETS	STA.	TO STA.
										ILLINOIS FED. AID PROJECT

GENERAL NOTES FOR PAINT

CLEANING AND PAINTING OF THE STRUCTUAL STEEL SHALL BE AS SPECIFIED IN THE SPECIAL PROVISION FOR "CLEANING AND PAINTING EXISITING STEEL STRUCTURES".

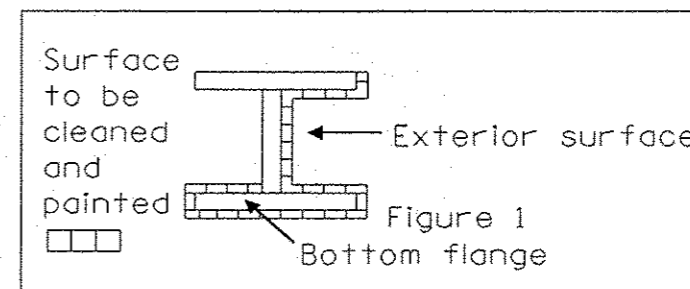
A MINIMUM OF ONE (1) AIR MONITORS WILL BE REQUIRED AT ALL LOCATIONS, TO MONITOR ABRASIVE BLASTING OPERATIONS. SEE SPECIAL PROVISION FOR "CONTAINMENT AND DISPOSAL OF LEAD PAINT CLEANING RESIDUE."

THE DESIGNATED AREAS CLEANED PER NEAR WHITE BLAST CLEANING - SSPC-SP10 AND PER POWER TOOL CLEANED - COMMERCIAL GRADE SHALL BE PAINTED ACCORDING TO THE REQUIREMENTS OF PAINT SYSTEM 1 - OZ/E/U. THE COLOR OF THE FINAL FINISH COAT FOR ALL INTERIOR STEEL SURFACES SHALL BE GRAY, MUNSELL NO 5B 7/1. THE COLOR OF THE FINAL FINISH COAT FOR THE EXTERIOR AND BOTTOM FLANGE OF THE FASCIA BEAMS SHALL BE REDDISH BROWN, MUNSELL No 2.5YR 3/4

ALL ITEMS (SUCH AS, BUT NOT LIMITED TO: CONDUITS, BRACKETS, AND DECK DRAINS) ATTACHED TO THE OUTSIDE OF THE FASCIA BEAMS SHOULD BE CLEANED AND PAINTED.

LOCATIONS 1 (SN: 016-0217), 2 (SN 016-0218)
ALL BEAMS, BEARINGS AND OTHER STRUCTURAL STEEL WITHIN FIVE (5) FT., (MEASURED ALONG THE BEAM) OF EITHER SIDE OF ALL DECK JOINTS, SHALL BE CLEANED PER NEAR WHITIE BLAST CLEANING SSPC-SP10. THE EXTEROIR SURFACES AND TOP AND BOTTOM OF THE BOTTOM FLANGE OF THE FASCIA BEAMS (SEE FIGURE 1) SHALL BE CLEANED PER NEAR WHITE BLAST CLEANING SSPC-SP10.

LOCATION 3 (SN: 045-0008)
ALL EXISTING STEEL SHALL BE CLEANED PER NEAR WHITE BLAST CLEANING SSPC-SP10.



FASCIA BEAM PAINTING DETAIL
FIGURE 1

FILE NAME #	USER NAME # hongo	DESIGNED -	REVISED -	STATE OF ILLINOIS DEPARTMENT OF TRANSPORTATION	US 20 GENERAL PAINTING NOTES	F.A.P. RTE.	SECTION	COUNTY	TOTAL SHEETS	SHEET NO.
c:\p\work\p\p\dat\hongo\0831419\0107013	hnt.pln.dgn	DRAWN -	REVISED -			345	2012-077BP	COOK & KANE	19	3
#MODELNAME#	PLOT SCALE # 100.0000 1/16"	CHECKED -	REVISED -		SCALE:	SHEET	OF	SHEETS	STA.	TO STA.
	PLOT DATE # 11/9/2012	DATE -	REVISED -							
ILLINOIS FED. AID PROJECT										CONTRACT NO. 60V88

SUMMARY OF QUANTITIES			URBAN 100% STATE TOTAL QUANTITIES	CONSTRUCTION TYPE CODE			SUMMARY OF QUANTITIES				TOTAL QUANTITIES	CONSTRUCTION TYPE CODE							
CODE NO	ITEM	UNIT		COOK		KANE	CODE NO	ITEM	UNIT	TOTAL QUANTITIES		CODE NO	ITEM	UNIT	TOTAL QUANTITIES	CODE NO	ITEM	UNIT	TOTAL QUANTITIES
				0014 LOC 1	0014 LOC 2	0014 LOC 3													
67000400	ENGINEER'S FIELD OFFICE, TYPE A	CAL MO	6	2	2	2													
67100100	MOBILIZATION	L SUM	1	0.33	0.33	0.34													
70100310	TRAFFIC CONTROL AND PROTECTION, STANDARD 701421	L SUM	1	0.50		0.50													
70200100	NIGHTTIME WORK ZONE LIGHTING	L SUM	1	0.33	0.33	0.34													
X7010216	TRAFFIC CONTROL AND PROTECTION, (SPECIAL)	L SUM	1		1														
Z0007112	CONTAINMENT AND DISPOSAL OF LEAD PAINT CLEANING RESIDUES	L SUM	1	0.33	0.33	0.34													
Z0010501	CLEANING AND PAINTING STEEL BRIDGE NO. 1	L SUM	1	1															
Z0010502	CLEANING AND PAINTING STEEL BRIDGE NO. 2	L SUM	1		1														
Z0010503	CLEANING AND PAINTING STEEL BRIDGE NO. 3	L SUM	1			1													
Z0030850	TEMPORARY INFORMATION SIGNING	SQ FT	128.5	25.7	51.4	51.4													

LOCATION 1: (SN 016-0217)
US 20 OVER POPLAR CREEK

TRAFFIC DATA
-US 20
2011 ADT = 42700
POSTED SPEED LIMIT = 50-55MPH
-US 20 (VILLA ST)
2010 ADT 10600
POSTED SPEED LIMIT= 40MPH

R 9E



HANOVER TOWNSHIP
COOK COUNTY

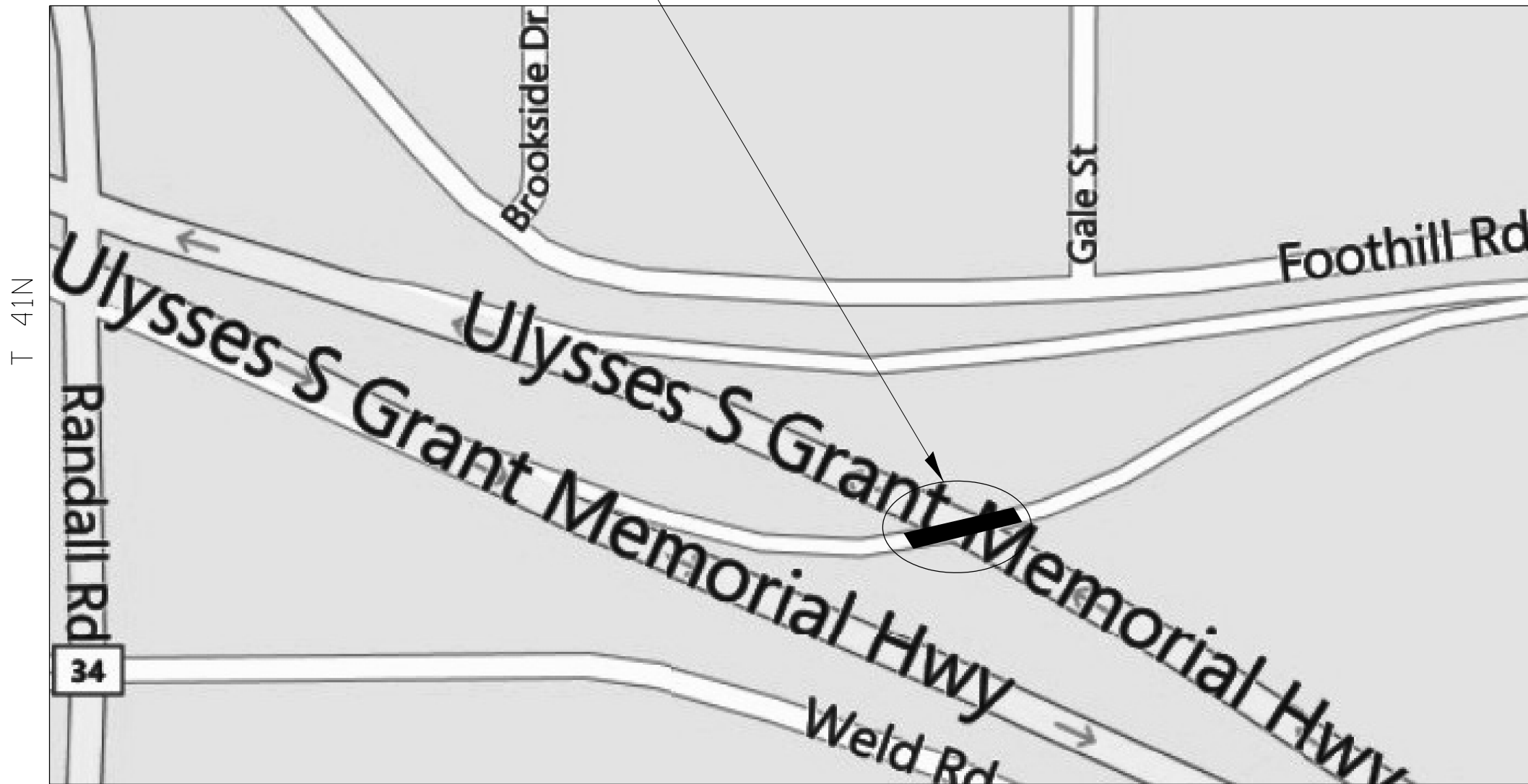
LOCATION 2: (SN 016-0218)
US 20 WB OVER US 20 (VILLA ST.)

FILE NAME =	USER NAME = honga	DESIGNED -	REVISED -	STATE OF ILLINOIS DEPARTMENT OF TRANSPORTATION	LOCATION MAP			F.A.P. RTE.	SECTION	COUNTY	TOTAL SHEETS	SHEET NO.	
et:\pw\work\p\dot\honga\d0319419\0109013\sh-t-plan.dgn		DRAWN -	REVISED -		SCALE:	SHEET 1	OF 2 SHEETS	STA.	TO STA.	345	2012-077BP	COOK & KANE	19 5
\$MODELNAME\$		CHECKED -	REVISED -									CONTRACT NO. 60V88	
		DATE -	REVISED -									ILLINOIS FED. AID PROJECT	

LOCATION 3: SN (045-0008)
 US 20 EB (LARKIN AVE) OVER US 20 WB

TRAFFIC DATA
 -US 20 EB (LARKIN AVE)
 2010 ADT = 9700
 SPEED LIMIT = 45 MPH
 -US 20 WB
 2011 ADT = 29700
 US 20 WB POSTED SPEED LIMIT = 55 MPH

R 8E



T 41N

ELGIN TOWNSHIP
 KANE COUNTY

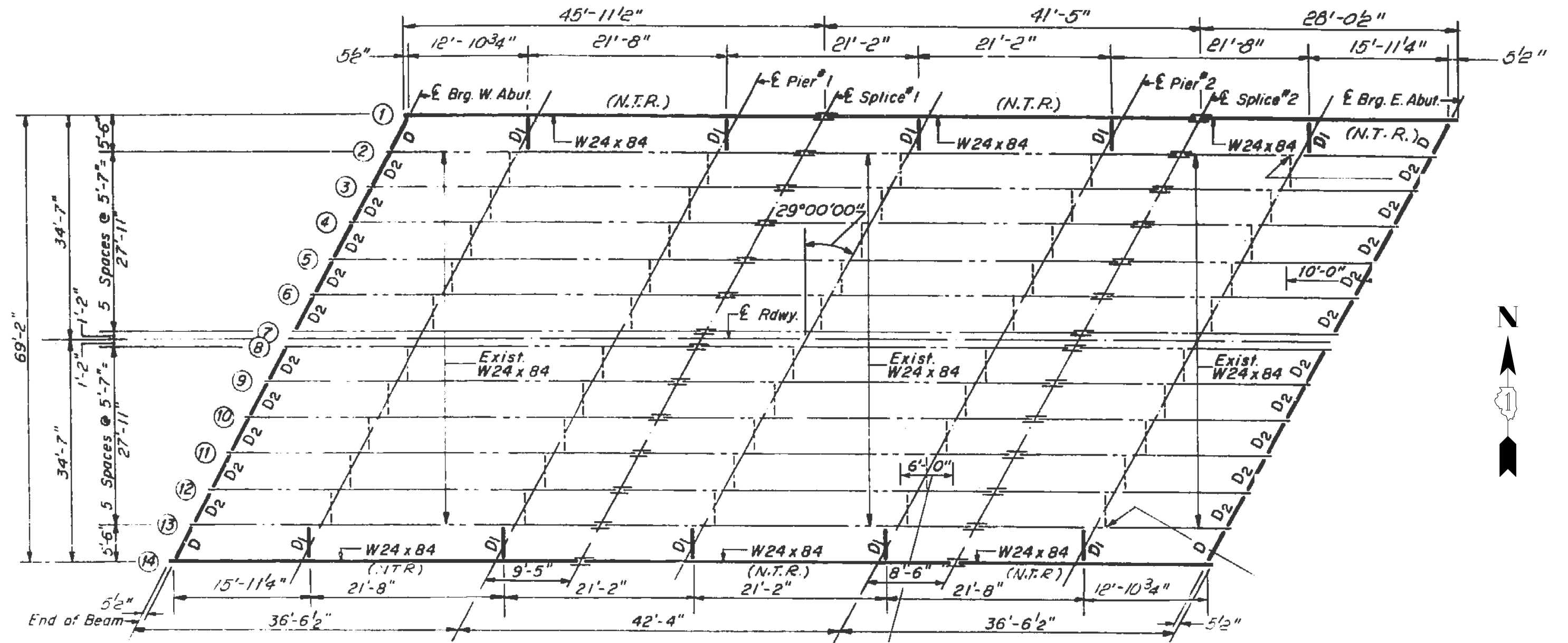
FILE NAME =	USER NAME = honga	DESIGNED -	REVISED -
ct:\pwork\pwork\hongad0319419\0109013	shht-plan.dgn	DRAWN -	REVISED -
	PLOT SCALE = 100.0000' / in.	CHECKED -	REVISED -
\$MODELNAME\$	PLOT DATE = 11/9/2012	DATE -	REVISED -

STATE OF ILLINOIS
 DEPARTMENT OF TRANSPORTATION

LOCATION MAP

SCALE: SHEET 2 OF 2 SHEETS STA. TO STA.

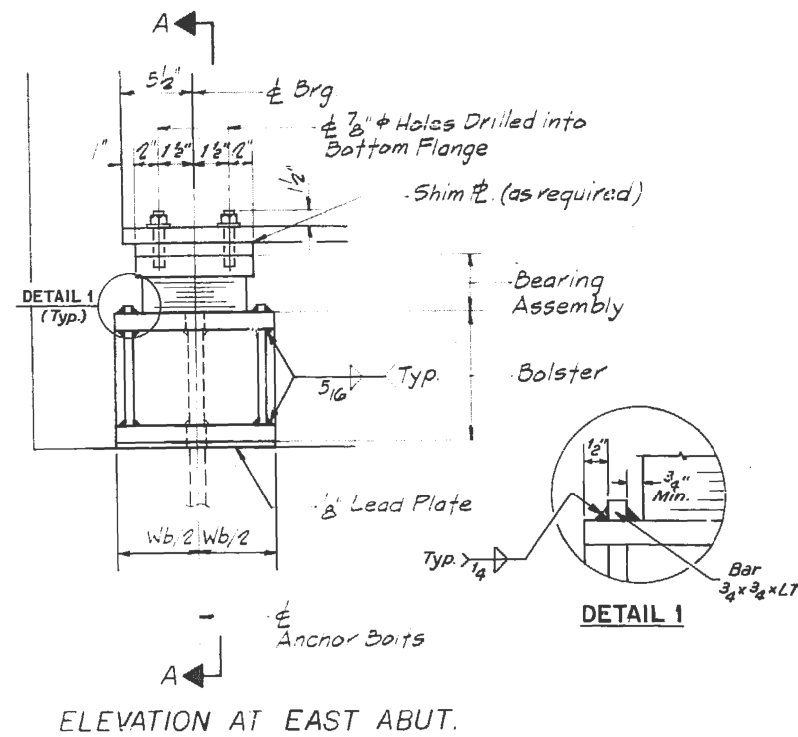
F.A.P. RTE.	SECTION	COUNTY	TOTAL SHEETS	SHEET NO.
345	2012-077BP	COOK & KANE	19	6
CONTRACT NO. 60V88			ILLINOIS FED. AID PROJECT	



FRAMING PLAN

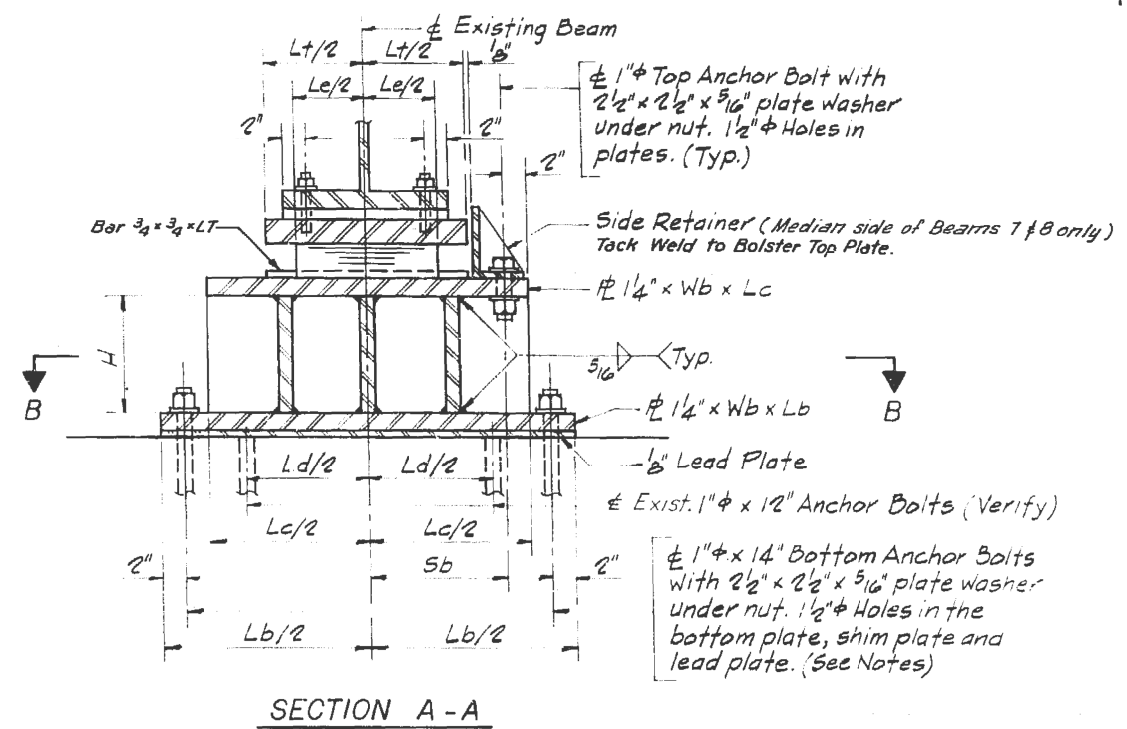
DIAPHRAGM
D & D₂ = W8 X 31

FILE NAME = c:\pwwork\pwwork\honga\d0319419\DI09013	USER NAME = honga sh:plan.dgn	DESIGNED - DRAWN -	REVISED - REVISED -	STATE OF ILLINOIS DEPARTMENT OF TRANSPORTATION	SN 016-0217 FRAMING PLAN	F.A.P. RTE. = 345	SECTION = 2012-077BP	COUNTY = COOK & KANE	TOTAL SHEETS = 19	SHEET NO. = 8		
MODELNAME	PLOT SCALE = 100.0000' / in.	CHECKED -	REVISED -			SCALE: SHEET 2 OF 4 SHEETS STA. TO STA.	CONTRACT NO. 60V88					
	PLOT DATE = 11/9/2012	DATE -	REVISED -			ILLINOIS FED. AID PROJECT						

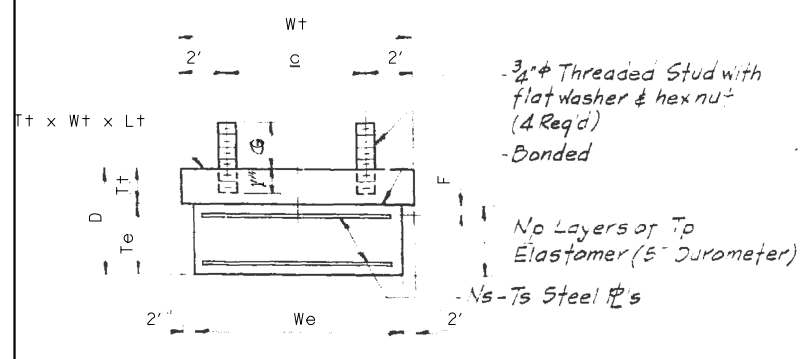


ELEVATION AT EAST ABUT.

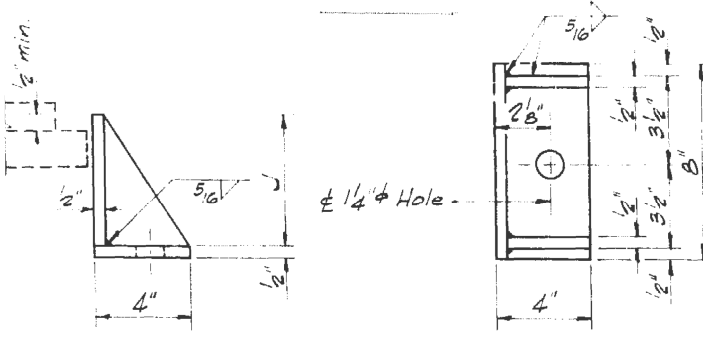
TYPE I ELASTOMERIC EXPANSION BRG. WITH BOLSTER



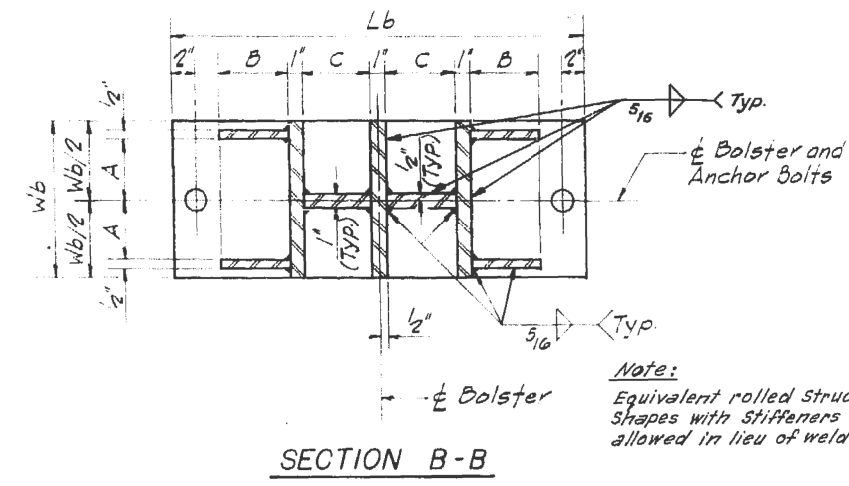
SECTION A-A



EAST ABUT BEARING ASSEMBLY
PIER 1 BEARING ASSEMBLY

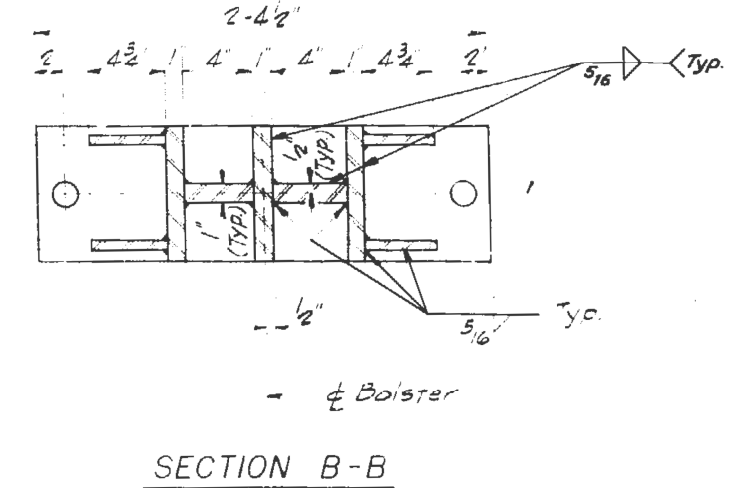
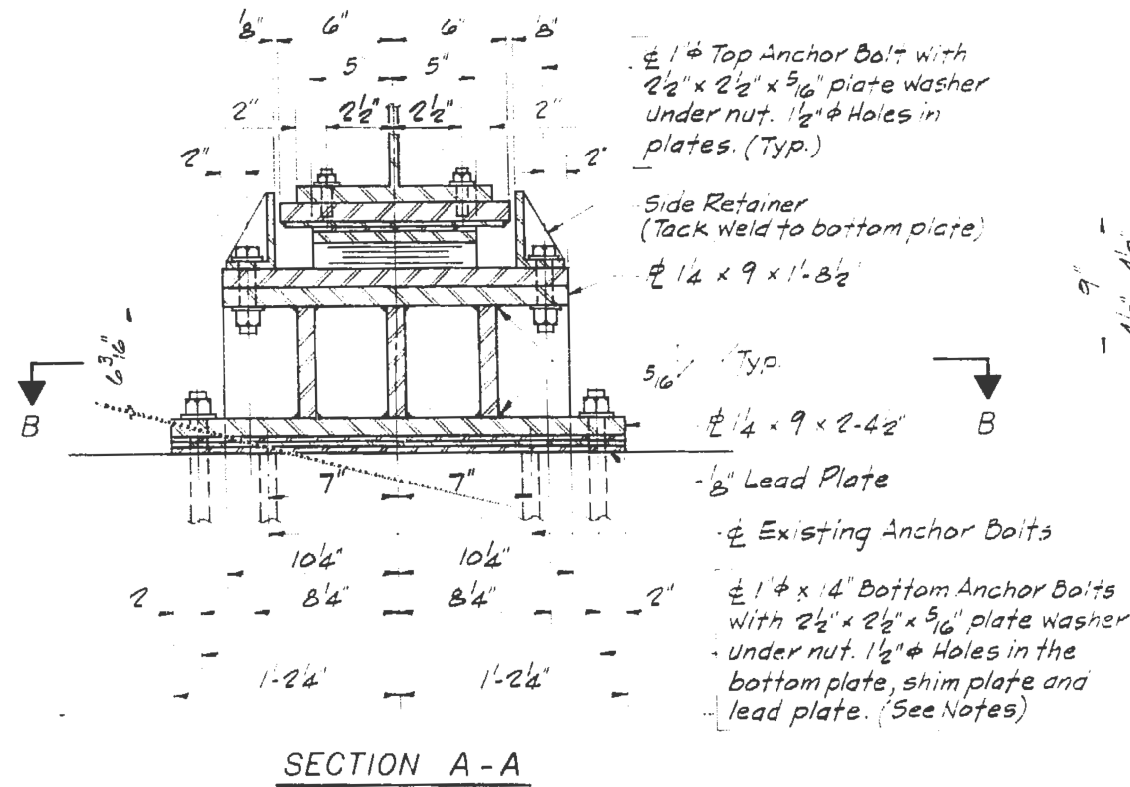
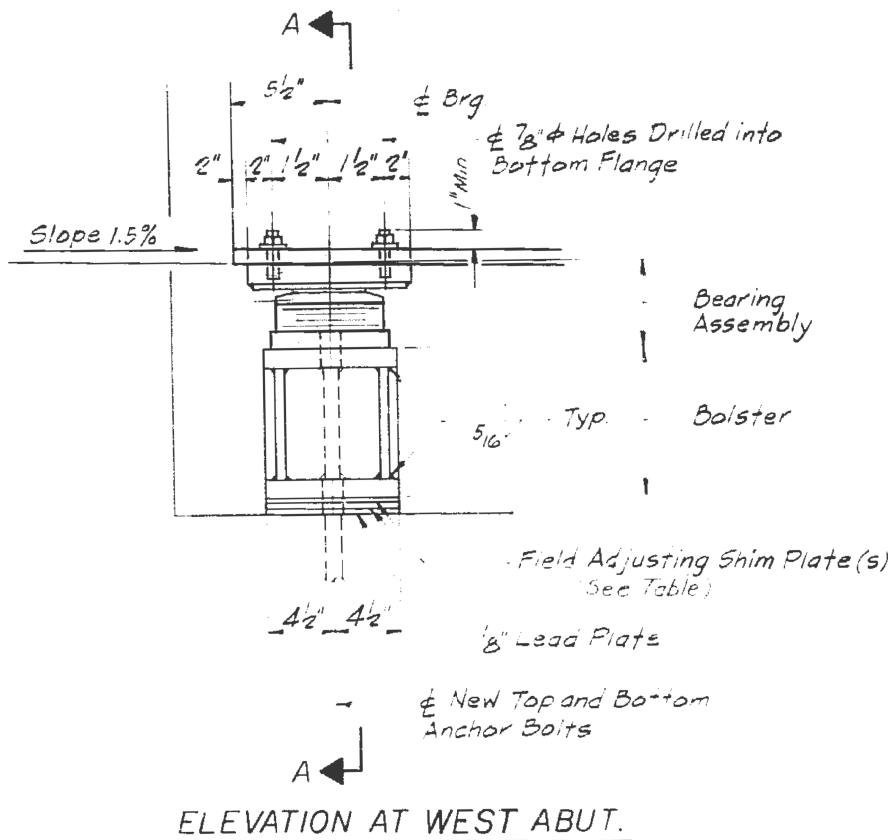


SIDE RETAINER
 Equivalent rolled angle with stiffeners will be allowed in lieu of welded plates.

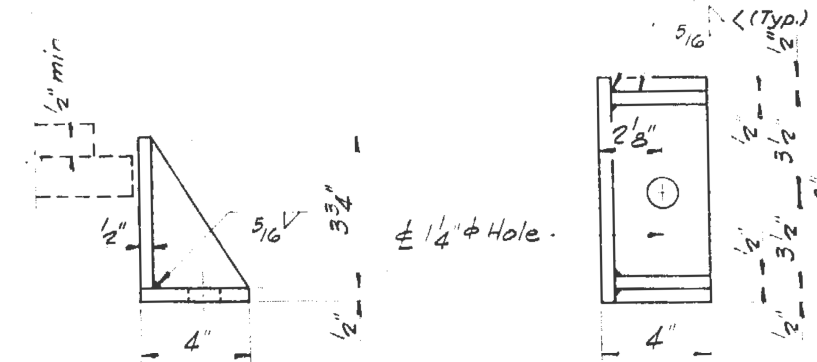
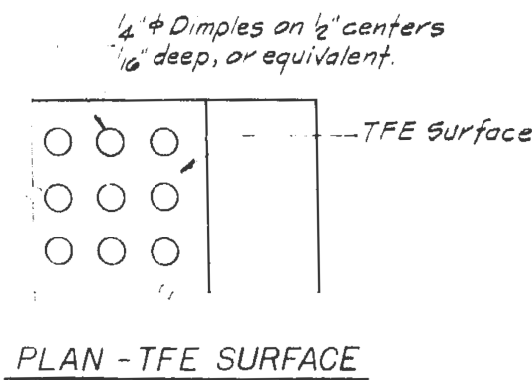
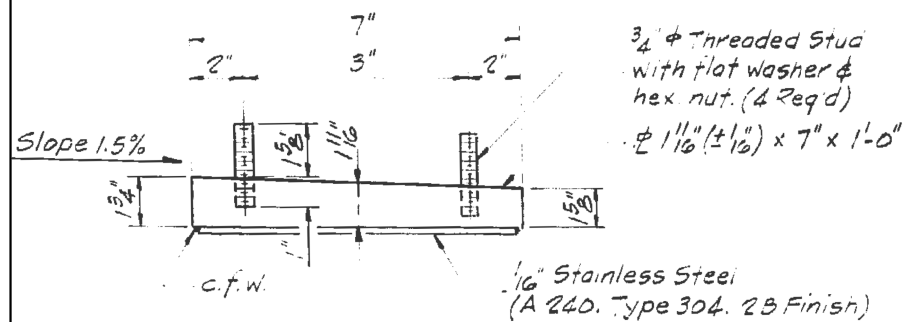


SECTION B-B

FILE NAME =	USER NAME = honga	DESIGNED -	REVISED -	STATE OF ILLINOIS DEPARTMENT OF TRANSPORTATION	SN 016-0217 EAST BEARING DETAILS	F.A.P. RTE.	SECTION	COUNTY	TOTAL SHEETS	SHEET NO.	
et:\pwork\work\pwork\honga\d0319419\0109013.sht-plen.dgn	DRAWN -	REVISED -	345			2012-077BP	COOK & KANE	19	9		
\$MODELNAME\$	PLOT SCALE = 100.0000' / in.	CHECKED -	REVISED -			CONTRACT NO. 60V88					
	PLOT DATE = 11/9/2012	DATE -	REVISED -			ILLINOIS FED. AID PROJECT					
					SCALE:	SHEET 3 OF 4 SHEETS		STA.	TO STA.		



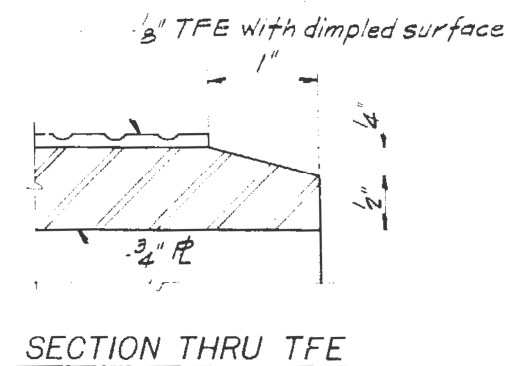
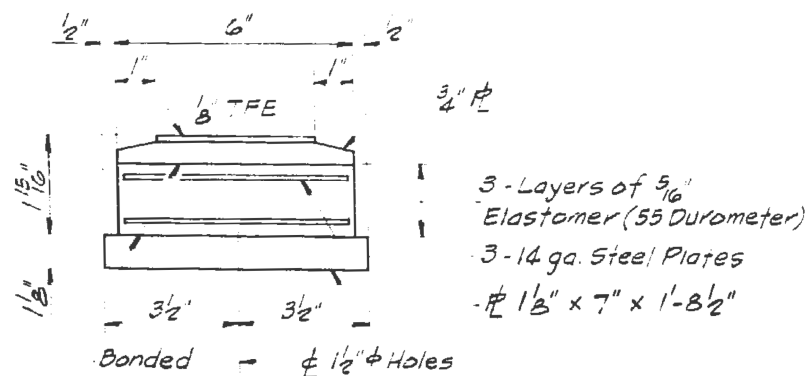
TYPE II TFE ELASTOMERIC EXP. BRG. WITH BOLSTER



TOP BEARING ASSEMBLY

PLAN - TFE SURFACE

SIDE RETAINER

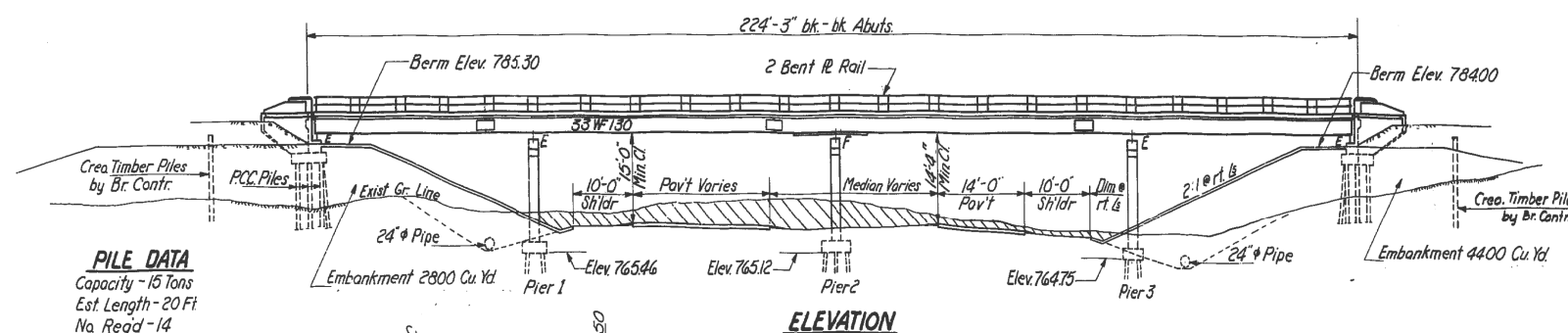


FILE NAME =	USER NAME = honga	DESIGNED -	REVISED -
et:\pwork\pwork\honga\d0319419\0109013\sh-t-plan.dgn		DRAWN -	REVISED -
#MODELNAME#	PLOT SCALE = 100.0000' / in.	CHECKED -	REVISED -
	PLOT DATE = 11/9/2012	DATE -	REVISED -

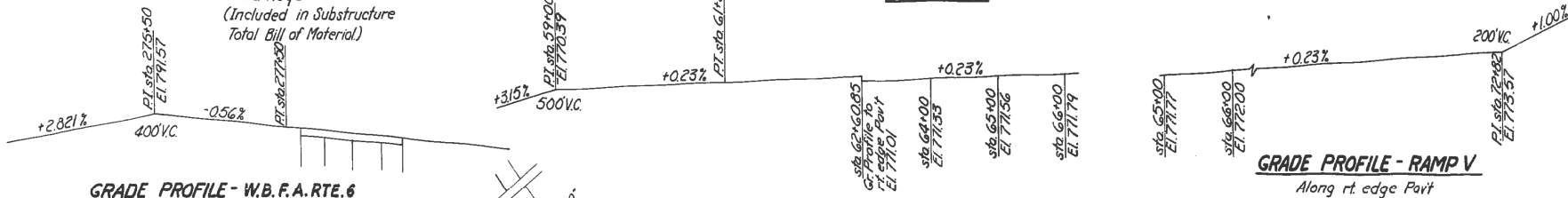
STATE OF ILLINOIS
DEPARTMENT OF TRANSPORTATION

SN 016-0217	
WEST BEARING DETAILS	
SCALE:	SHEET 4 OF 4 SHEETS STA. TO STA.

F.A.P. RTE.	SECTION	COUNTY	TOTAL SHEETS	SHEET NO.
345	2012-077BP	COOK & KANE	19	10
CONTRACT NO. 60V88			ILLINOIS FED. AID PROJECT	



PILE DATA
 Capacity - 15 Tons
 Est Length - 20 Ft
 No Req'd - 14
 (Included in Substructure
 Total Bill of Material)

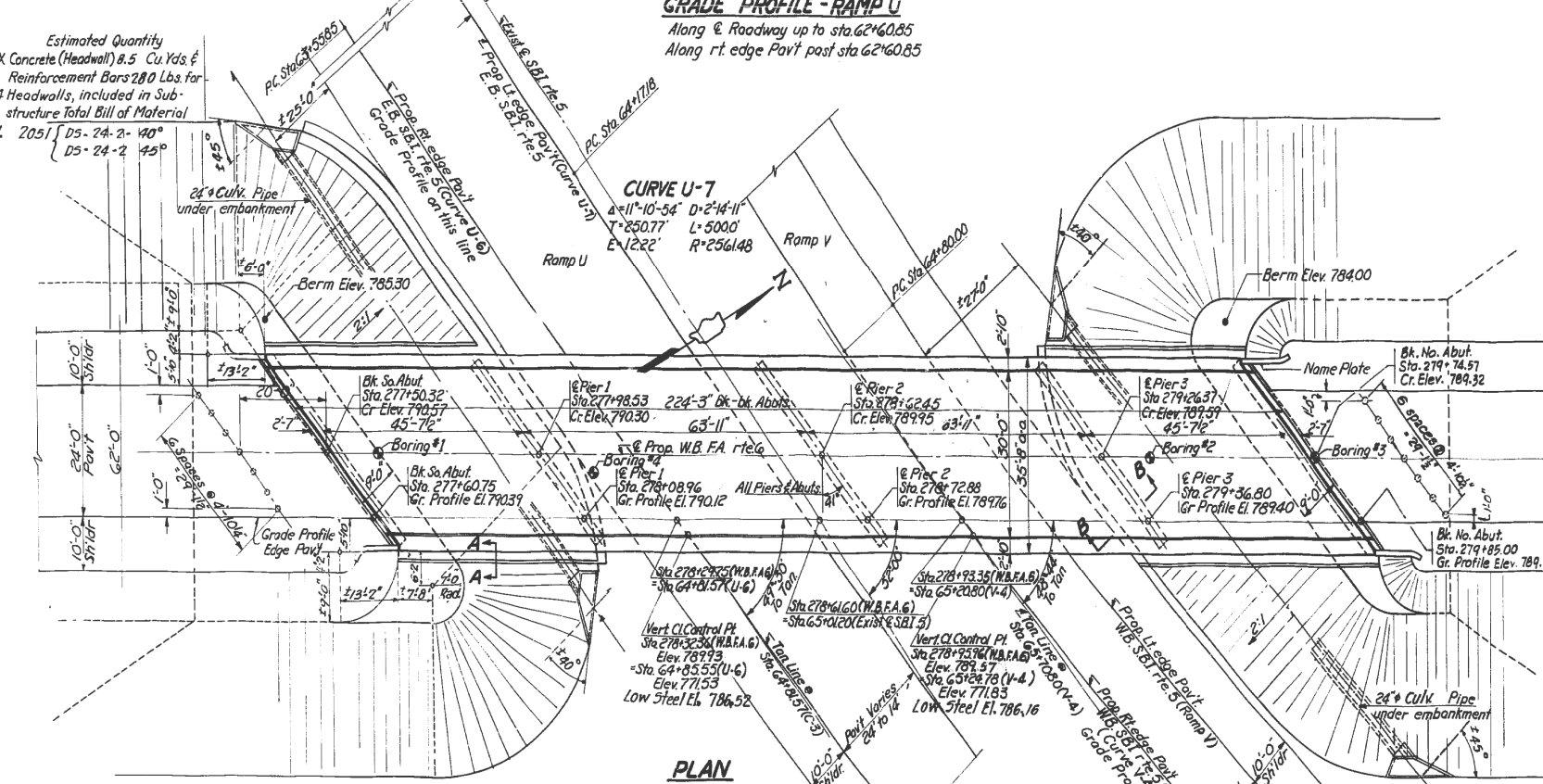


GRADE PROFILE - W.B.F.A. RTE. 6
 Along rt edge Pav't

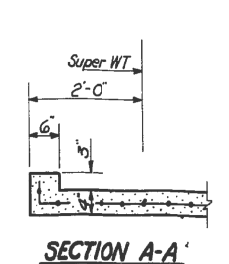
GRADE PROFILE - RAMP U
 Along & Roadway up to sta 62+60.85
 Along rt. edge Pav't post sta 62+60.85

GRADE PROFILE - RAMP V
 Along rt. edge Pav't

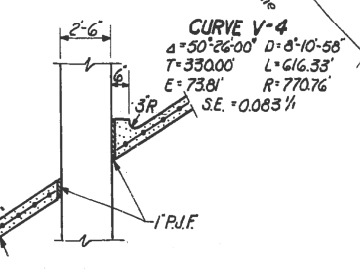
Estimated Quantity
 Class X Concrete (Headwall) 8.5 Cu. Yds.
 Reinforcement Bars 280 Lbs. for
 4 Headwalls, included in Sub-
 structure Total Bill of Material
 See Std. 2051 D5-24-2-140°
 D5-24-2-45°



PLAN



CURVE U-6
 $\Delta = 23^\circ 34' 00''$ $D = 2^\circ 00'$
 $T = 597.65'$ $L = 1178.33'$
 $E = 61.60'$ $R = 2864.93'$
 S.E. = 0.033 1/1

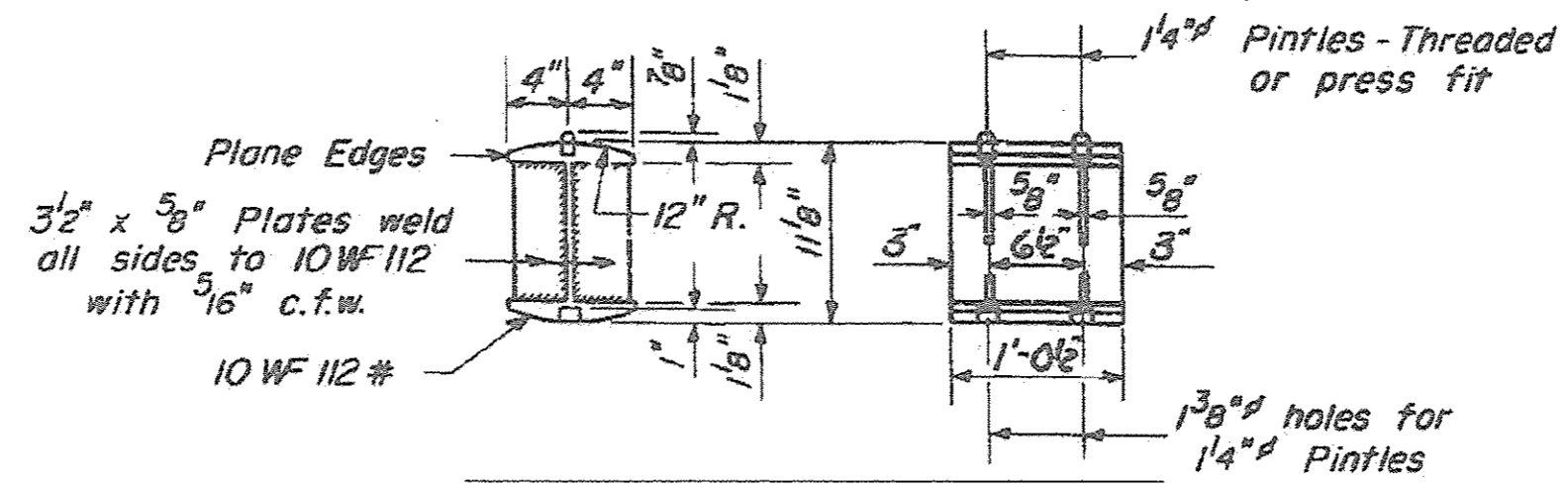
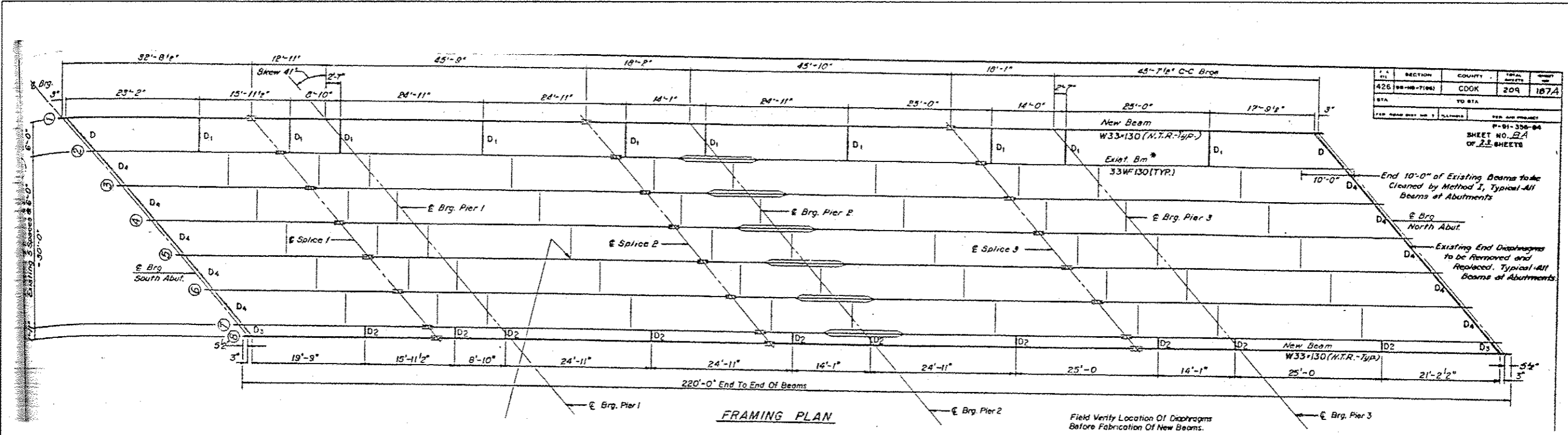


SECTION B-B'

FOR INFORMATION ONLY

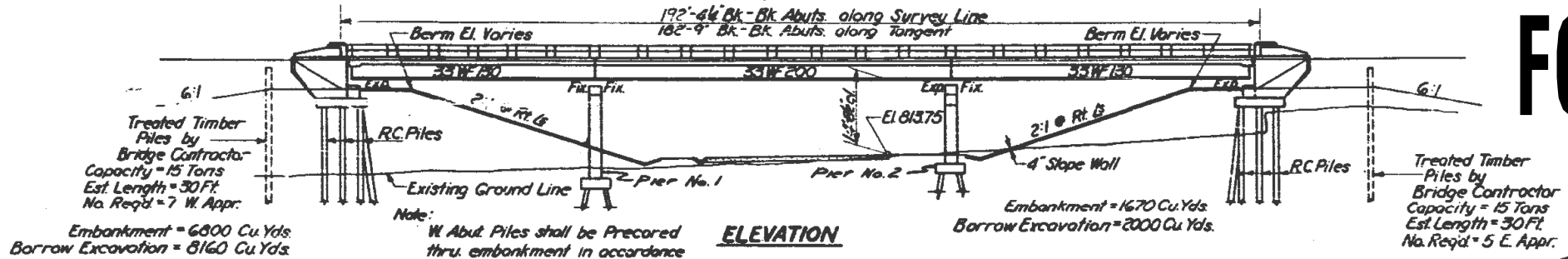
FILE NAME =	USER NAME = honga	DESIGNED -	REVISED -	STATE OF ILLINOIS DEPARTMENT OF TRANSPORTATION	SN 016-0218 PLAN AND ELEVATION	F.A.P. RTE.	SECTION	COUNTY	TOTAL SHEETS	SHEET NO.	
ei:\pw\work\p1dot\honga\0319419\0189013\sh1-plan.dgn	PLOT SCALE = 100.0000' / in.	DRAWN -	REVISED -			345	2012-077BP	COOK & KANE	19	11	
#MODELNAME#	PLOT DATE = 11/9/2012	CHECKED -	REVISED -			CONTRACT NO. 60V88					
		DATE -	REVISED -			SCALE:	SHEET 1	OF 2 SHEETS	STA.	TO STA.	ILLINOIS FED. AID PROJECT

SECTION	COUNTY	TOTAL SHEETS	SHEET NO.
426 (88-18-716J)	COOK	209	187A
STA. TO STA.		PER. AND PROJECT	
		P-81-338-84	
SHEET NO. 2A OF 23 SHEETS			



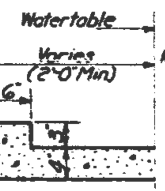
FILE NAME *	USER NAME * hange	DESIGNED -	REVISED -	STATE OF ILLINOIS DEPARTMENT OF TRANSPORTATION	SN 016-0218 FRAMING AND BEARING DETAILS	F.A.P. RTE.	SECTION	COUNTY	TOTAL SHEETS	SHEET NO.	
c:\pwwork\p\p\dot\hange\8319419\0189810	whr-plan.dgn	DRAWN -	REVISED -			345	2012-077BP	COOK & KANE	19	12	
	PLOT SCALE * 100.0000 1/ in.	CHECKED -	REVISED -			CONTRACT NO. 60V88					
#MOELNAME*	PLOT DATE * 11/9/2012	DATE -	REVISED -			ILLINOIS FED. AID PROJECT					

FOR INFORMATION ONLY



ELEVATION

Note: W. Abut. Piles shall be Precored thru. embankment in accordance with Art. 60.9 (c) of the Standard Specifications.



SEC. A-A

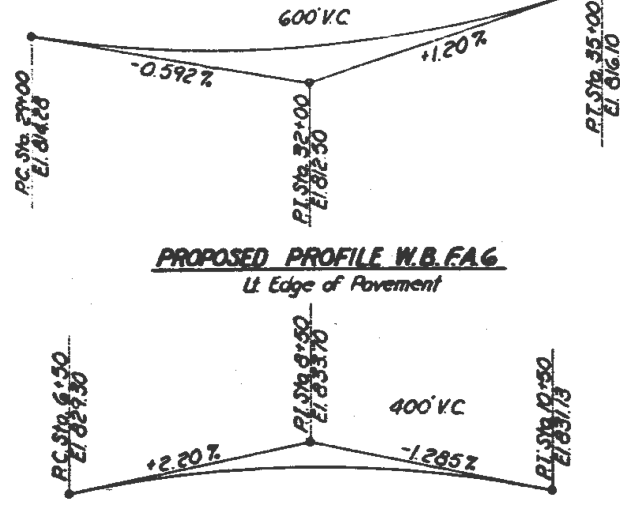
NOTE: 3185 Cu. Yds. Earth Excavation from Detour Road to be used in Embankment. See Sheet No. 3. Total Borrow Excavation 6,975 Cu. Yds.

FA RT. 6 W. BOUND

CURVE DATA	
Δ = 16°-8'	D = 2'-00"
T = 406.05	L = 806.67
E = 28.63	R = 2865.0'
PC Sta. 26+02.83	PI Sta. 30+08.88
PT Sta. 34+09.50	S = 0.321 ft. 50 MPH

RAMP E

CURVE DATA	
Δ = 47°-3'	D = 8'-42.84'
T = 286.25	L = 539.94
E = 59.61	R = 657.55
PCC Sta. 5+54.32	PI Sta. 8+40.57
PT Sta. 10+94.26	S = 0.831 ft

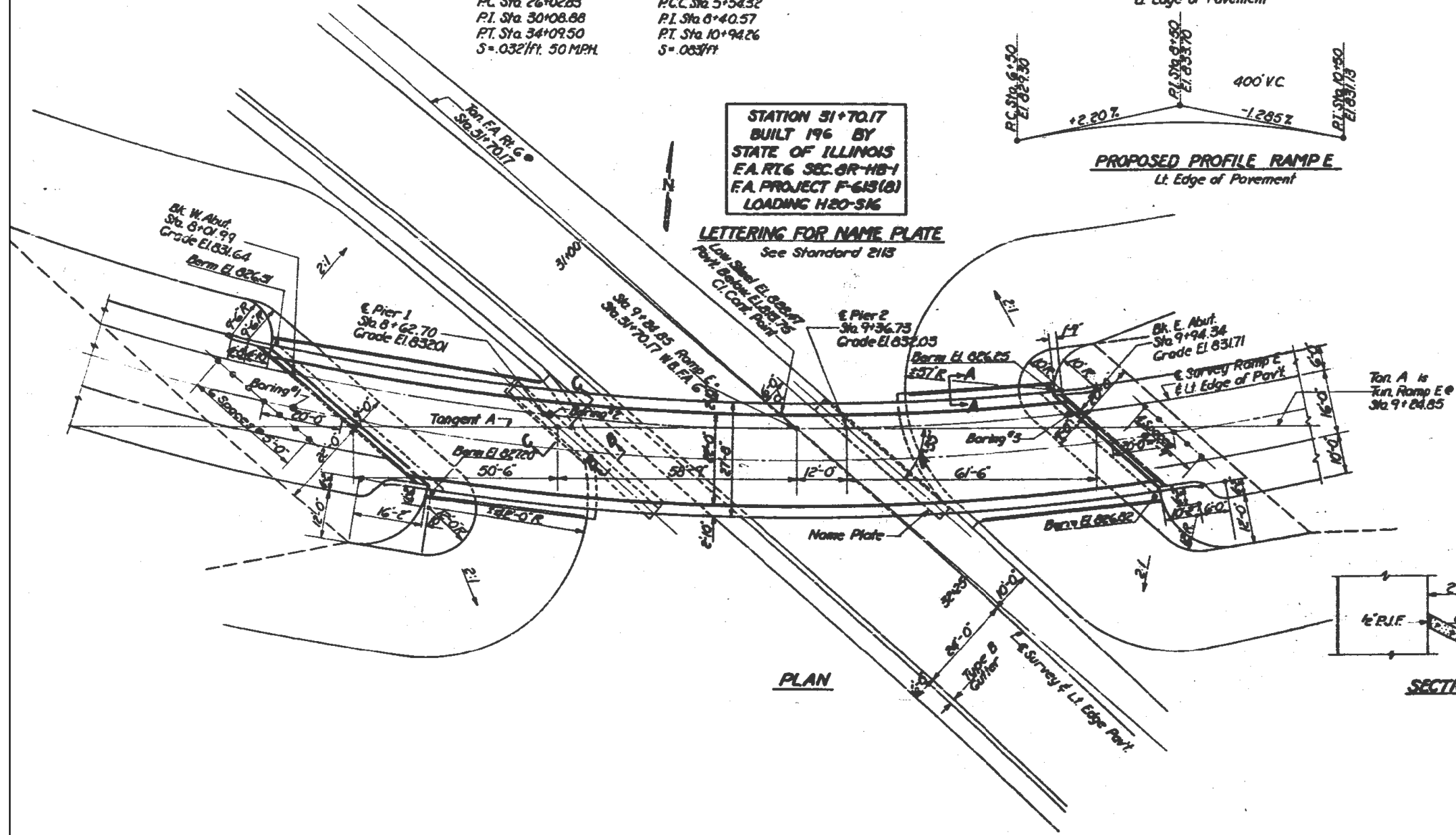


PROPOSED PROFILE W.B. FA 6

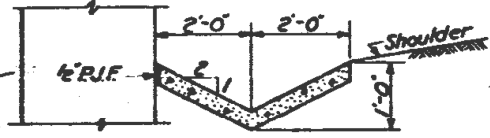
PROPOSED PROFILE RAMP E

STATION 31+70.17
BUILT 196 BY
STATE OF ILLINOIS
FA RT. 6 SEC. 08-HB-1
FA PROJECT F-613(B)
LOADING H20-S16

LETTERING FOR NAME PLATE
See Standard 2113

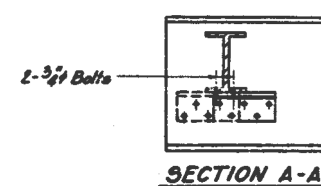
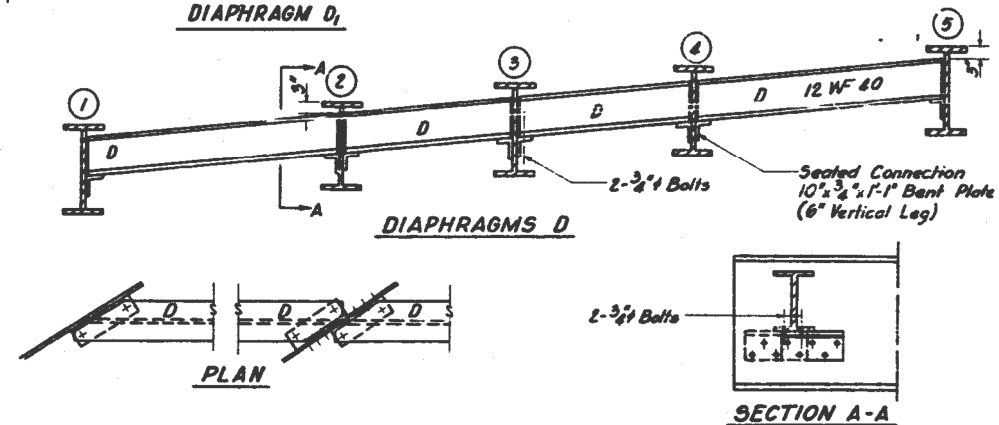
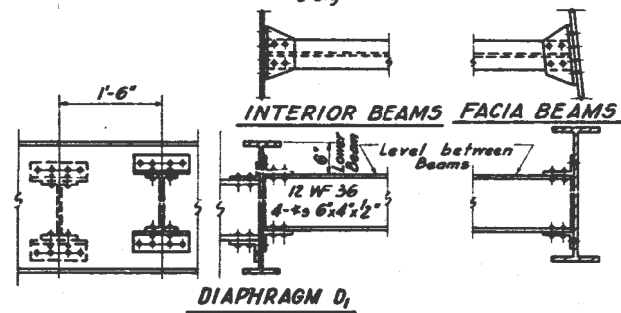
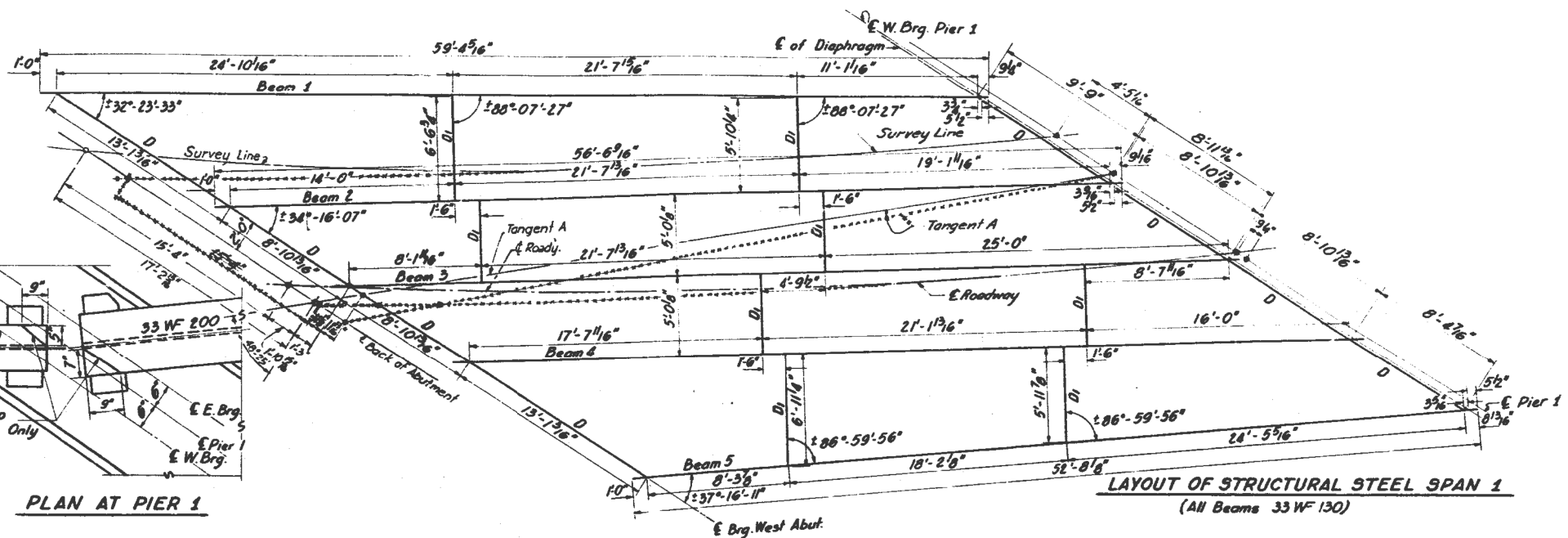
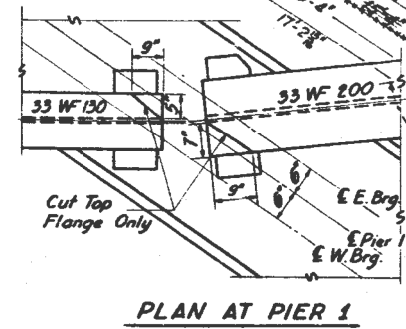
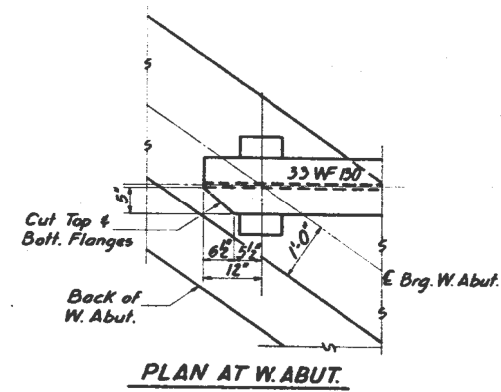


PLAN



SECTION B-B

FILE NAME =	USER NAME = honga	DESIGNED -	REVISED -	STATE OF ILLINOIS DEPARTMENT OF TRANSPORTATION	SN 045-008 PLAN AND ELEVATION	F.A.P. RTE.	SECTION	COUNTY	TOTAL SHEETS	SHEET NO.	
et:\pwork\pwork\hong\0319419\0109013.sht-plan.dgn	PLOT SCALE = 100.0000' / in.	DRAWN -	REVISED -			345	2012-077BP	COOK & KANE	19	13	
\$MODELNAME\$	PLOT DATE = 11/9/2012	CHECKED -	REVISED -			CONTRACT NO. 60V88					
		DATE -	REVISED -			ILLINOIS FED. AID PROJECT					



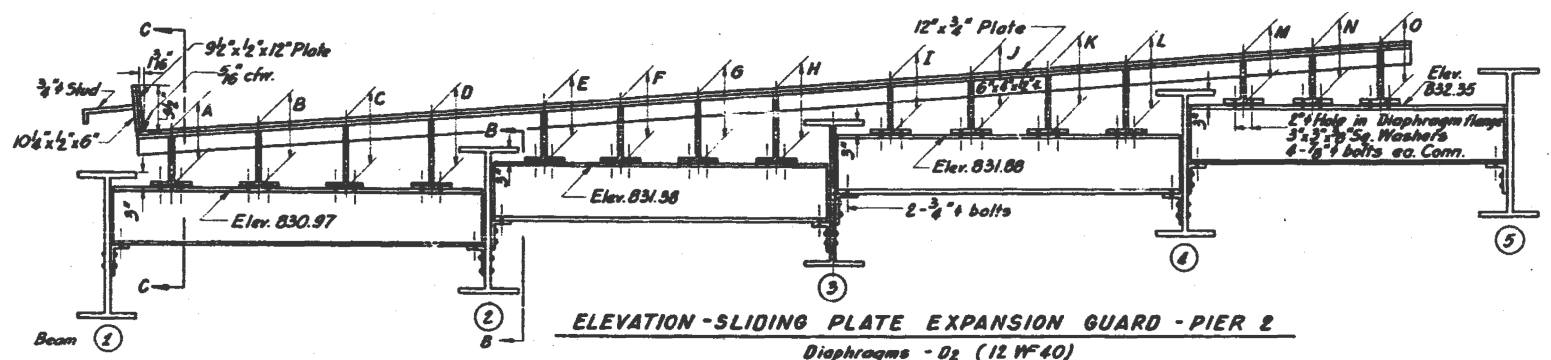
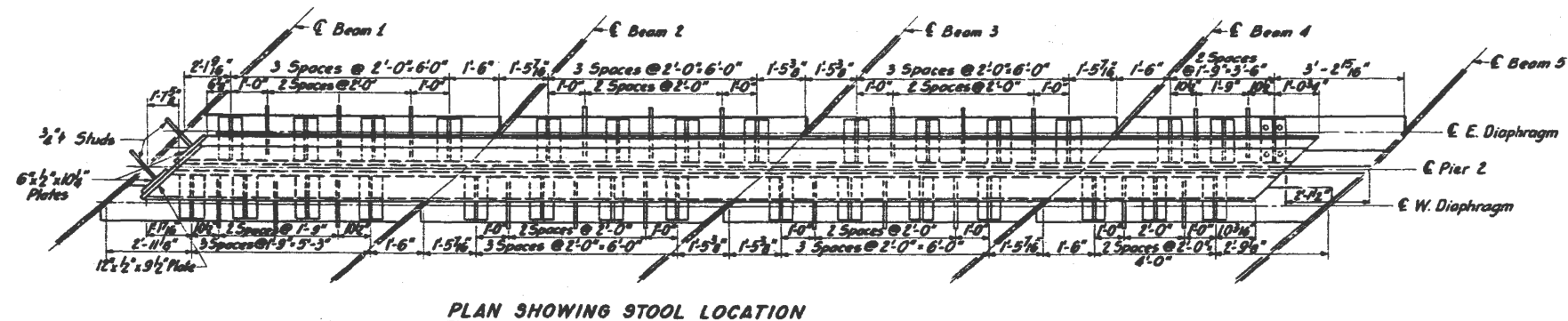
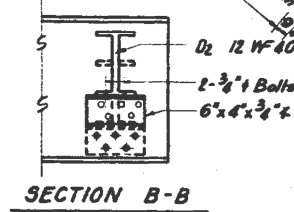
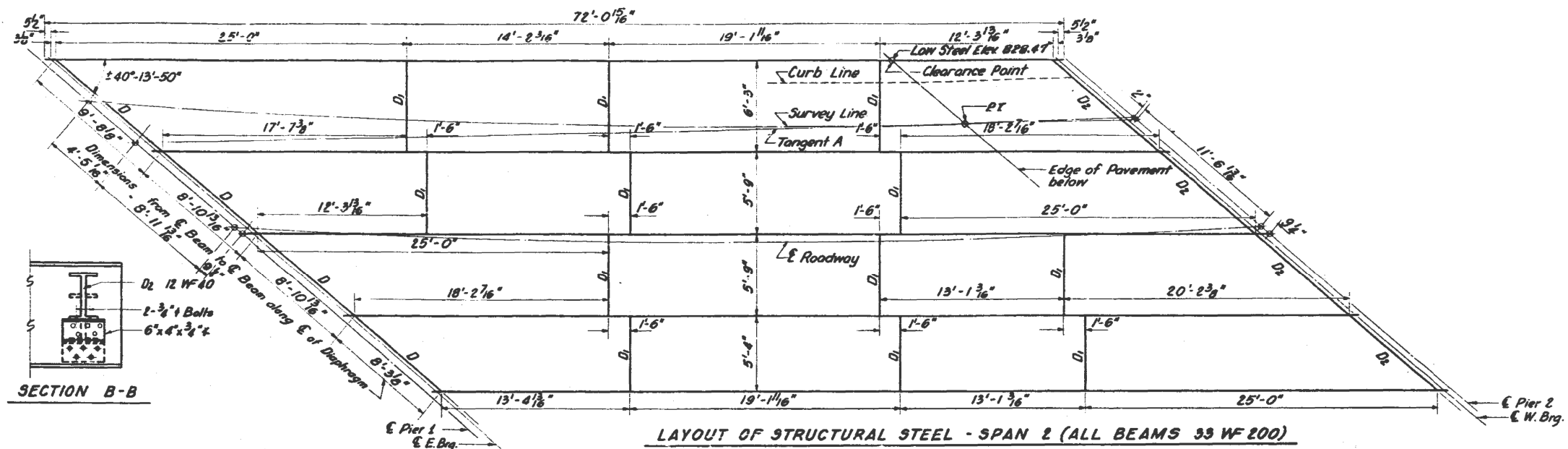
FILE NAME =	USER NAME = honga	DESIGNED -	REVISED -
c:\pwork\work\pwork\honga\d0319419\0109013	sht-plan.dgn	DRAWN -	REVISED -
	PLOT SCALE = 100.0000' / in.	CHECKED -	REVISED -
MODELNAME	PLOT DATE = 11/9/2012	DATE -	REVISED -

STATE OF ILLINOIS
DEPARTMENT OF TRANSPORTATION

SN 045-008
SPAN 1 DETAILS

SCALE: SHEET 2 OF 5 SHEETS STA. TO STA.

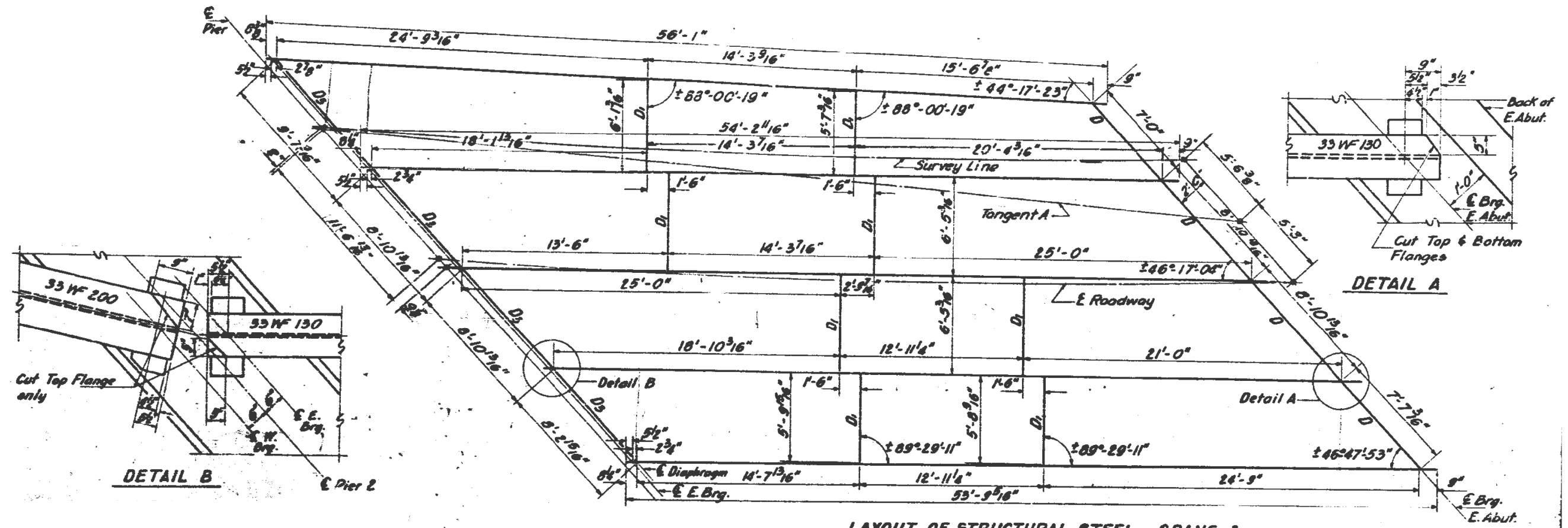
F.A.P. RTE.	SECTION	COUNTY	TOTAL SHEETS	SHEET NO.
345	2012-077BP	COOK & KANE	19	14
CONTRACT NO. 60V88			ILLINOIS FED. AID PROJECT	



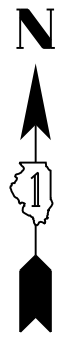
Diaphragms - D₂ (12 WF 40)
 Est. Wt. 4030 lbs.
 (Not including Wt. of Diaphragms)



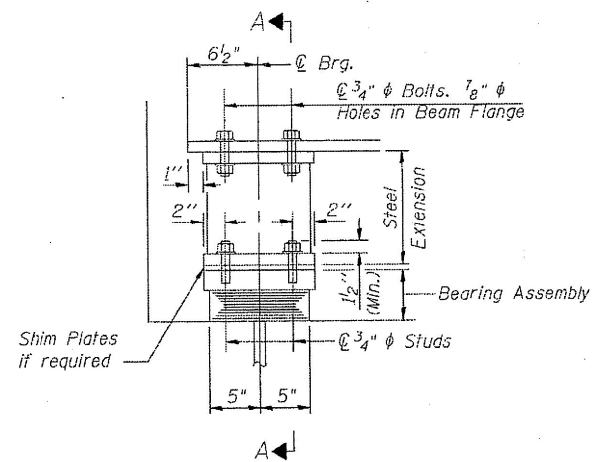
FILE NAME =	USER NAME = honga	DESIGNED -	REVISED -	STATE OF ILLINOIS DEPARTMENT OF TRANSPORTATION	SN 045-0008 SPAN 2 DETAILS	F.A.P. RTE.	SECTION	COUNTY	TOTAL SHEETS	SHEET NO.	
et:\pwwork\pwwork\honga\d0319419\0109013	shht-plan.dgn	DRAWN -	REVISED -			345	2012-077BP	COOK & KANE	19	15	
MODELNAME	PLOT SCALE = 100.0000' / in.	CHECKED -	REVISED -			CONTRACT NO. 60V88					
	PLOT DATE = 11/9/2012	DATE -	REVISED -			SCALE:	SHEET 3	OF 5 SHEETS	STA.	TO STA.	ILLINOIS FED. AID PROJECT



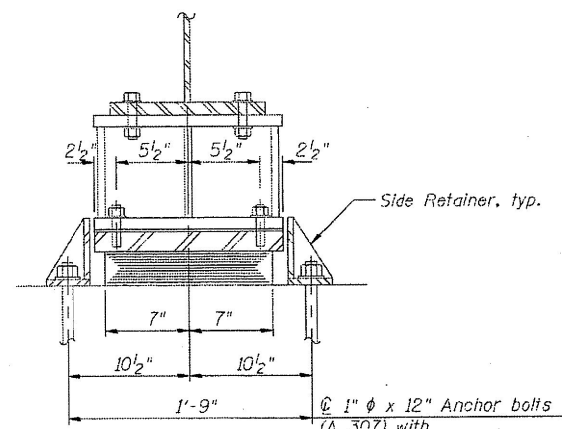
LAYOUT OF STRUCTURAL STEEL - SPANS 3
 (All Beams 33 W 130)



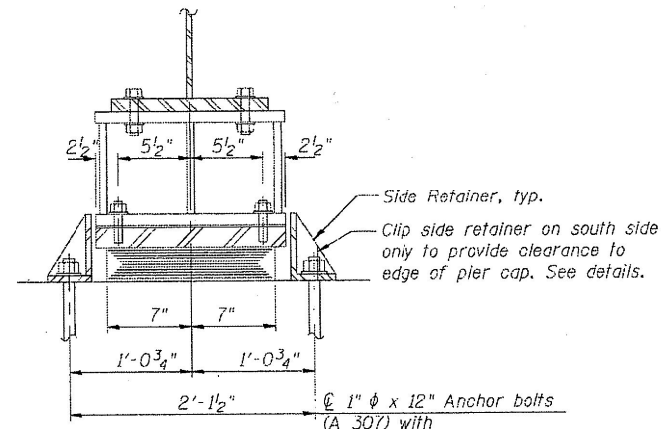
FILE NAME =	USER NAME = honga	DESIGNED -	REVISED -	STATE OF ILLINOIS DEPARTMENT OF TRANSPORTATION	SN 045-008 SPAN 3 DETAILS	F.A.P. RTE.	SECTION	COUNTY	TOTAL SHEETS	SHEET NO.	
et:\pwork\pwork\honga\d0319419\0109013	shht-plan.dgn	DRAWN -	REVISED -			345	2012-077BP	COOK & KANE	19	16	
\$MODELNAME\$	PLOT SCALE = 100.0000' / in.	CHECKED -	REVISED -			CONTRACT NO. 60V88					
	PLOT DATE = 11/9/2012	DATE -	REVISED -			SCALE:	SHEET 4	OF 5 SHEETS	STA.	TO STA.	ILLINOIS FED. AID PROJECT



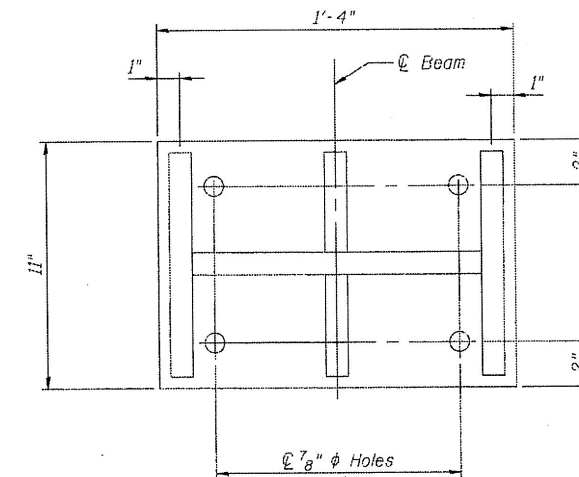
ELEVATION AT ABUT. OR PIER 2



SECTION A-A AT ABUTMENTS
 1" ϕ x 12" Anchor bolts (A 307) with 2 1/4 x 2 1/4 x 5/16" R washer under nut

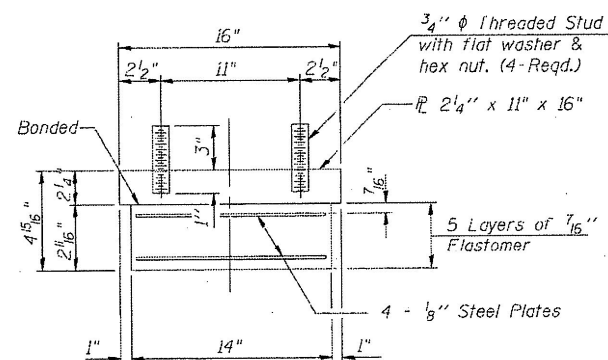


SECTION A-A AT PIER 2
 1" ϕ x 12" Anchor bolts (A 307) with 2 1/4 x 2 1/4 x 5/16" R washer under nut



PLAN STEEL EXTENSION

TYPE I ELASTOMERIC EXP. BRG.



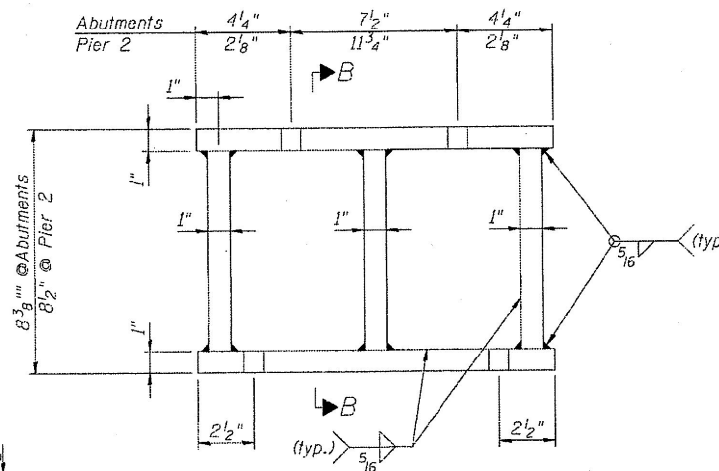
BEARING ASSEMBLY

Note: Shim plates shall not be placed under Bearing Assembly.

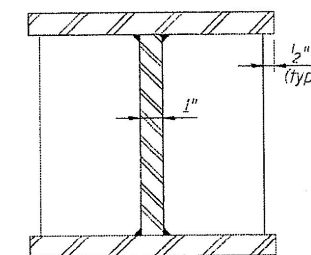
REACTION TABLE (KIPS)

Type	W. Abut.	Pier 2	E. Abut.
R DL	29.6	36.5	25.7
R LL	60.2	62.7	59.7
R Total	89.8	99.2	85.4

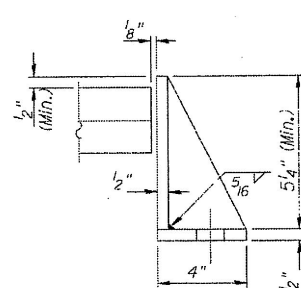
Note: Reactions at Pier 2 are end reactions for replacement bearings on Span 2 side only.



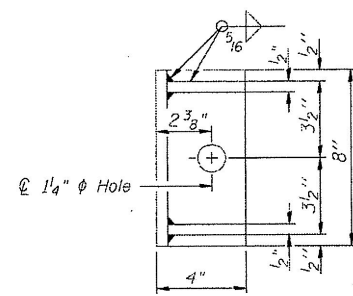
ELEVATION STEEL EXTENSION



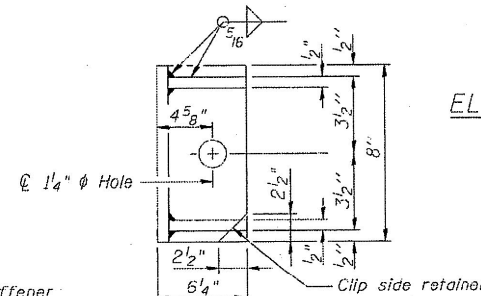
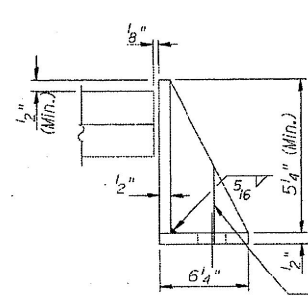
SECTION B-B



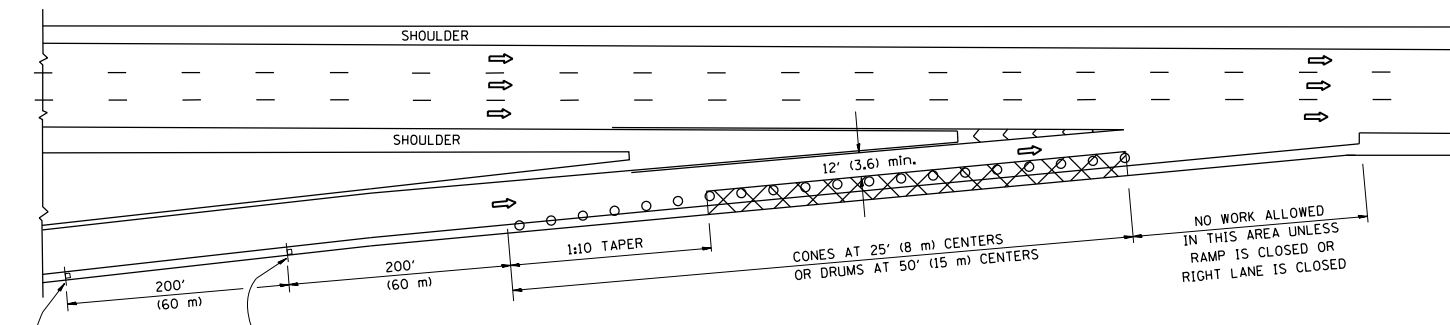
SIDE RETAINER AT ABUTMENTS
 Equivalent rolled angle with stiffeners will be allowed in lieu of welded plates.



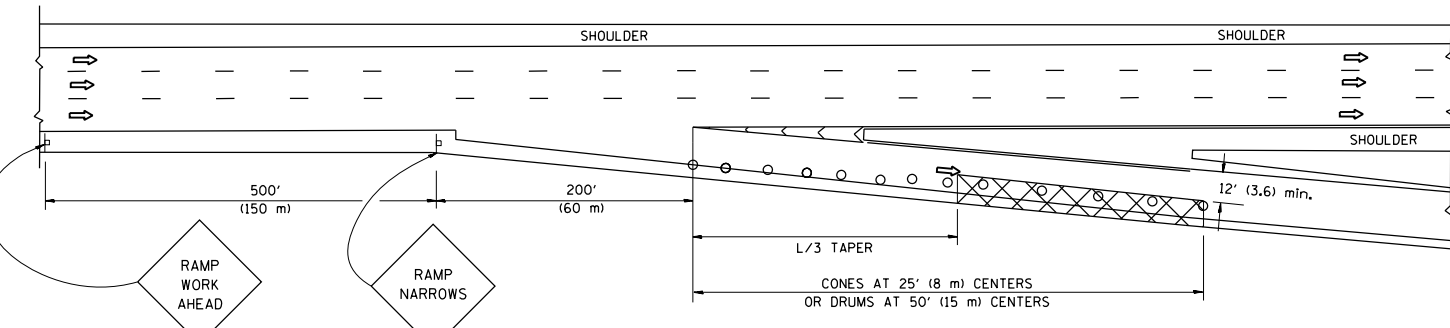
SIDE RETAINER AT PIER 2
 Equivalent rolled angle with stiffeners will be allowed in lieu of welded plates.



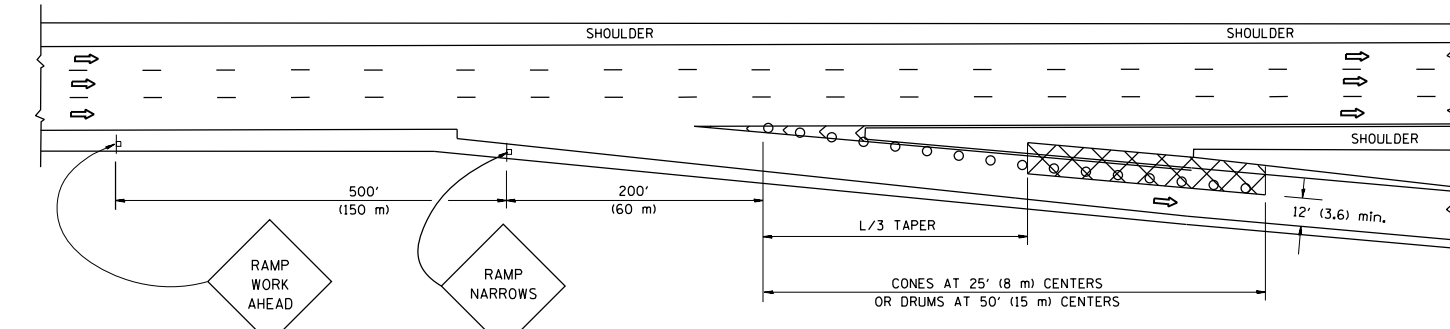
PARTIAL RAMP CLOSURE DETAILS



TYPICAL ENTRANCE RAMP



TYPICAL EXIT RAMP



TYPICAL EXIT RAMP

SYMBOLS

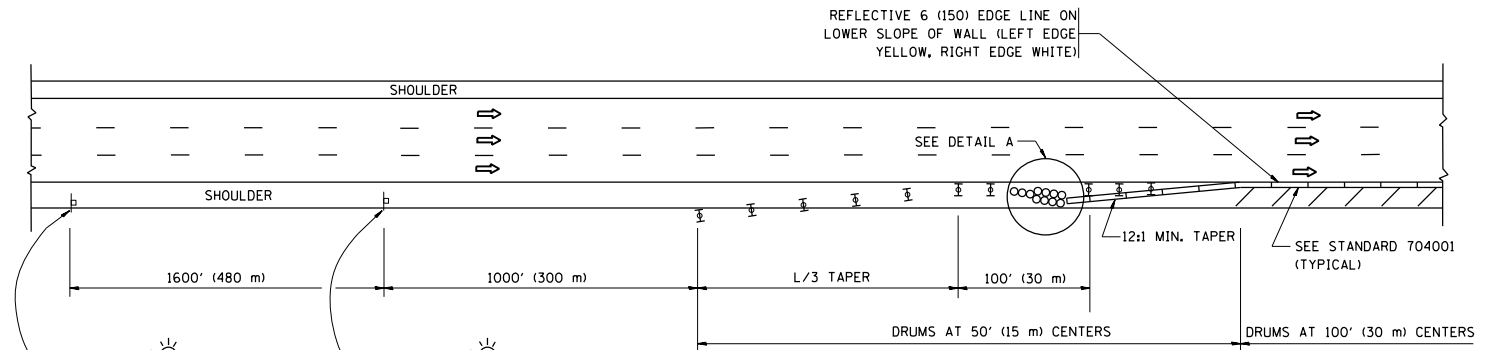
- ACTIVE WORK AREA
- SIGN ON PORTABLE OR PERMANENT SUPPORT
- FLAGGER WITH CONTROL SIGN
- TYPE II BARRICADE, DRUM OR VERTICAL BARRICADE WITH STEADY BURN MONO-DIRECTIONAL LIGHT
- CONE, DRUM OR BARRICADE

GENERAL NOTES

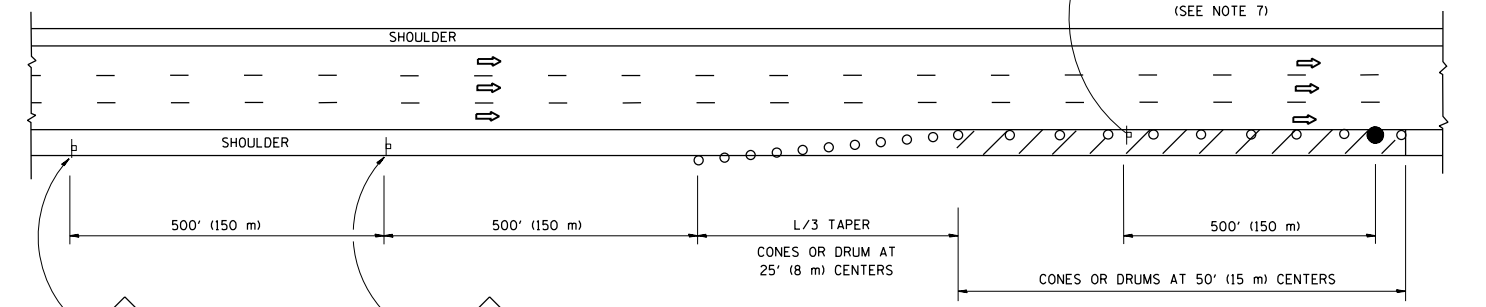
1. THE "L" DISTANCE EQUALS:

SPEED LIMIT	FORMULAS
45 mph (80 km/h) OR GREATER:	METRIC ENGLISH L=0.65(W)(S) L=(W)(S)
W = WIDTH OF OFFSET IN FEET (METERS) S = NORMAL POSTED SPEED MPH (KM/H)	
2. PLASTIC DRUMS WITH HIGH PERFORMANCE REFLECTIVE SHEETING AND STEADY BURNING LIGHTS ARE REQUIRED FOR ALL NIGHTTIME CLOSURES.
3. ALL SIGNS SHALL BE POST MOUNTED IF THE CLOSURE TIME EXCEEDS FOUR DAYS.
4. FLASHING LIGHTS SHALL BE USED DURING THE HOURS OF DARKNESS AND SHALL BE INSTALLED ABOVE THE FIRST TWO SETS OF SIGNS.

SHOULDER CLOSURE DETAILS

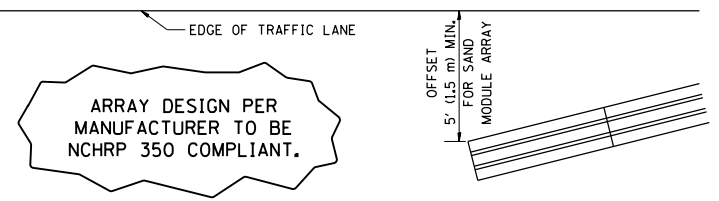


PERMANENT SHOULDER CLOSURE



DAYTIME SHOULDER CLOSURE

THIS DETAIL IS USED WHERE:
1. VEHICLES, EQUIPMENT, WORKERS OR THEIR ACTIVITIES ENCROACH IN AN AREA CLOSER THAN 15' (4.5 m) TO THE EDGE OF PAVEMENT FOR A PERIOD IN EXCESS OF 15 MINUTES.



DETAIL "A"
IMPACT ATTENUATOR, TEMPORARY
(SEE NOTE 5)

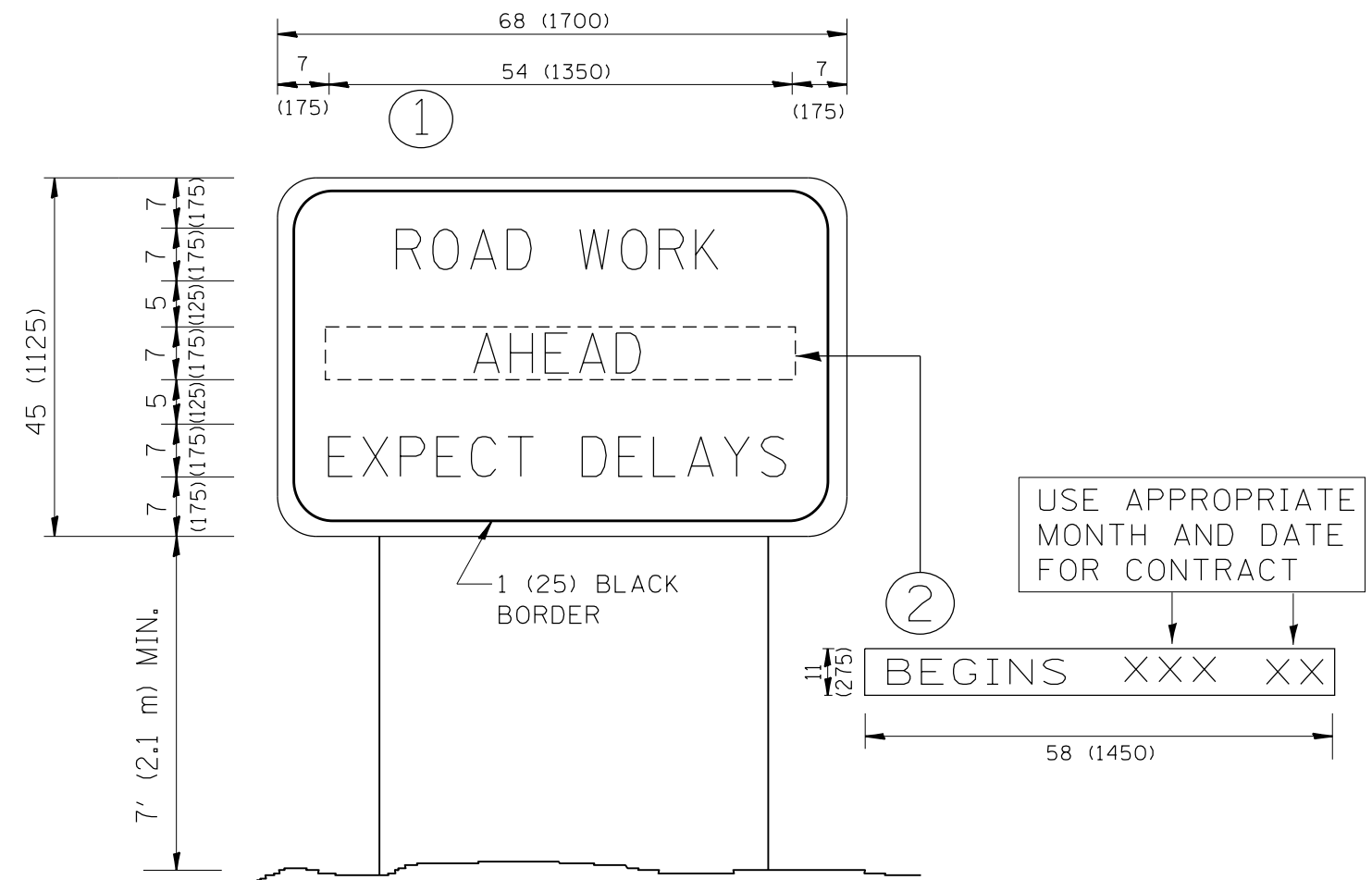
ALL DIMENSIONS ARE IN INCHES (MILLIMETERS) UNLESS OTHERWISE SHOWN.

FILE NAME =	USER NAME = honga	DESIGNED -	REVISED - 04-03
et:\pw\work\p1dot\honga\d0319419\0109013\sh-t-plan.dgn		DRAWN - D.W.S.	REVISED - J.A.F. 12-06
		CHECKED -	REVISED - S.P.B. 01-07
		DATE - 11-96	REVISED - S.P.B. 12-09

STATE OF ILLINOIS
DEPARTMENT OF TRANSPORTATION

TRAFFIC CONTROL DETAILS FOR FREEWAY			
SHOULDER CLOSURES AND PARTIAL RAMP CLOSURES			
SCALE: NONE	SHEET NO. 1 OF 1 SHEETS	STA.	TO STA.

F.A.P. RTE.	SECTION	COUNTY	TOTAL SHEETS	SHEET NO.
345	2012-077BP	COOK & KANE	19	18
TC-17		CONTRACT NO. 60V88		
FED. ROAD DIST. NO. 1 ILLINOIS FED. AID PROJECT				



NOTES:

1. USE BLACK LETTERING ON ORANGE BACKGROUND.
2. ERECT SIGNS IN ADVANCE OF THE LOCATION FOR THE "ROAD CONSTRUCTION AHEAD" SIGN AT LOCATIONS AS DIRECTED BY THE ENGINEER.
3. ERECT SIGN ① WITH INSTALLED PANEL ② ONE WEEK PRIOR TO THE START OF CONSTRUCTION.
4. REMOVE PANEL ② SOON AFTER THE START OF CONSTRUCTION.
5. SEE SPECIAL PROVISION FOR "TEMPORARY INFORMATION SIGNING" FOR ADDITIONAL INFORMATION.
6. ONE SIGN ASSEMBLY EQUALS 25.70 SQ. FT. (2.3 SQ. M.)
7. SHALL BE PAID FOR AS TEMPORARY INFORMATION SIGNING.

ALL DIMENSIONS ARE IN INCHES (MILLIMETERS) UNLESS OTHERWISE SHOWN.

FILE NAME =	USER NAME = honga	DESIGNED -	REVISED - R. MIRS 09-15-97
et:\pw\work\p1dot\honga\d0319419\0109013	sh-t-plen.dgn	DRAWN -	REVISED - R. MIRS 12-11-97
	PLOT SCALE = 100.0000' / in.	CHECKED -	REVISED - T. RAMMACHER 02-02-99
	PLOT DATE = 11/9/2012	DATE -	REVISED - C. JUCIUS 01-31-07

**STATE OF ILLINOIS
DEPARTMENT OF TRANSPORTATION**

**ARTERIAL ROAD
INFORMATION SIGN**

SCALE: NONE SHEET NO. 1 OF 1 SHEETS STA. TO STA.

F.A.P. RTE.	SECTION	COUNTY	TOTAL SHEETS	SHEET NO.
345	2012-077BP	COOK & KANE	19	19
TC-22		CONTRACT NO. 60V88		
FED. ROAD DIST. NO. 1 ILLINOIS FED. AID PROJECT				