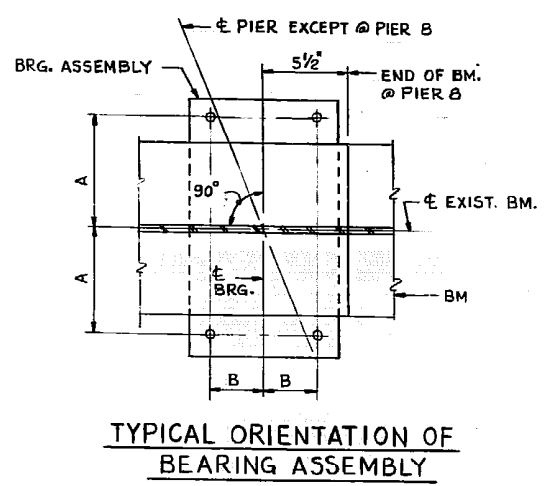
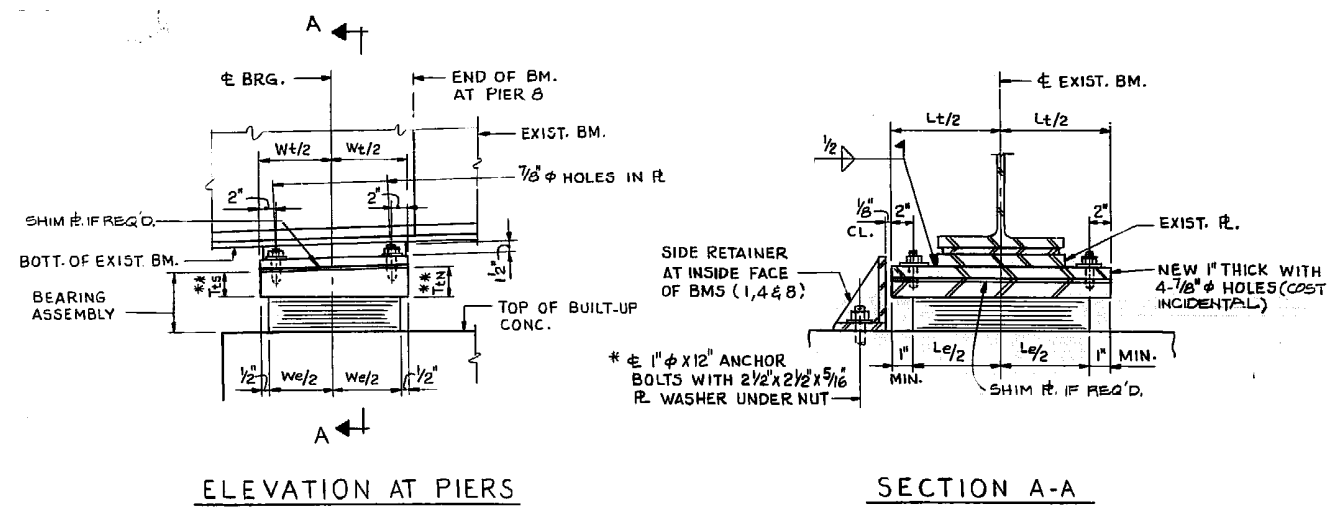
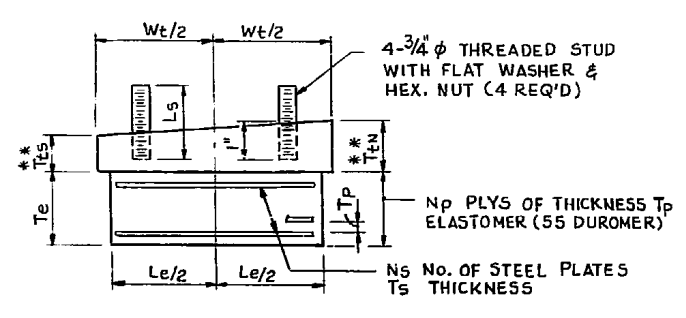


ROUTE FAP 348	SECTION 2012-079BP	COUNTY COOK	TOTAL SHEETS 16	SHEET NUMBER 11
-------------------------	------------------------------	-----------------------	---------------------------	---------------------------

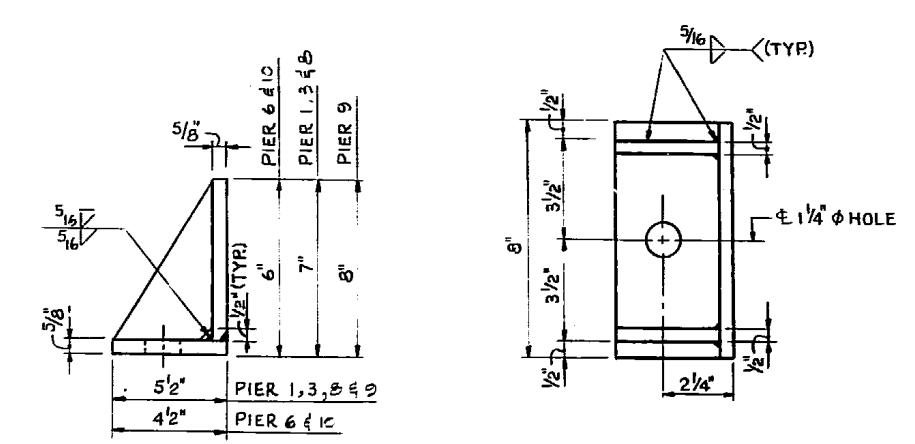


TYPE I ELASTOMERIC EXP. BRG.

** T_{ts} = THICKNESS OF SOUTH SIDE OF PLATE
 ** T_{tn} = THICKNESS OF NORTH SIDE OF PLATE



NOTE: SHIM PLATES SHALL NOT BE PLACED UNDER BEARING ASSEMBLY



VARIABLES	LOCATION		
	PIER 8 (SOUTH BRG.) BM 1B	BM 2B THROUGH B	
ELASTOMER	T_e (")	1 7/8	2 1/4
	W_e (")	6	9
	L_e (")	10	12
	T_p (")	5/16	3/8
	NP	5	5
	T_s (")	14 GA.	3/32
TOP PLATE	N_s	4	4
	T_{tn} (")	4 1/2	4 1/2
	T_{ts} (")	4 7/16	4
	W_t (")	9	10
	L_t (")	20	20
STUD	L_s (")	2 7/8	3
	A (")	8	8
	B (")	2 1/2	3
No. REQ'D	1	7	

ILLINOIS DEPARTMENT OF TRANSPORTATION

EXISTING BRIDGE PLAN

SN 016-0317

S.B. IL 43 (HARLEM AVE.) OVER I.C.G. R.R.